



2 ROOM APARTMENT, 4020 LINZ

## Central apartment suitable for 1–3 people.

Object number: HUST 17

[View and rent online](#)

Cozy newly built apartment in the city center of Linz. Very sunny and bright thanks to floor-to-ceiling windows and a south-west facing orientation.

<b>Period</b>	02/05/ - 02/06/2026
<b>Number of persons</b>	2
<b>Total incl. VAT.</b>	€ 1.312,26
<b>Security deposit</b>	€ 1.000,00



### Living space

27m<sup>2</sup>



### Maximum occupancy

3 Persons



### Complete accommodation <sup>?</sup>

1 Private bathroom 1 Separated bedroom



### 2. floor

Elevator available



### Check-in

12:00 - 22:00 Clock



### Check-out

06:00 - 11:00 Clock

## Sleeping options

### Sleeping room



1x Double bed (1,60 m x 2 m)



1x Sofa bed (1 person)

## Description of accommodation

Fully furnished apartment with like-new furniture. The kitchen is equipped with a refrigerator, ceramic cooktop, oven, and dishwasher. All kitchenware such as glasses, pots, dishes, cutlery, etc. is provided. A Tchibo Cafissimo coffee machine, as well as a kettle and a toaster, are also available in the kitchen.

Cozy living and dining area with a pull-out sofa bed (140 × 200), TV, and Wi-Fi.

Bedroom with a comfortable double bed (160 × 200) and wardrobe. Bed linen is provided. Exterior blinds are also available for complete blackout.

Modern bathroom with a large shower, washbasin, toilet, and washing machine (laundry detergent provided).

## Equipment & Features



### Basic equipment

- Internet/Wifi
- Private washing machine
- Towels
- Vacuum cleaner
- Hairdryer
- TV
- Bedclothes
- Private toilet
- Cleaning utensils



### First supply

- Toilet paper
- Nespresso capsules
- Soap



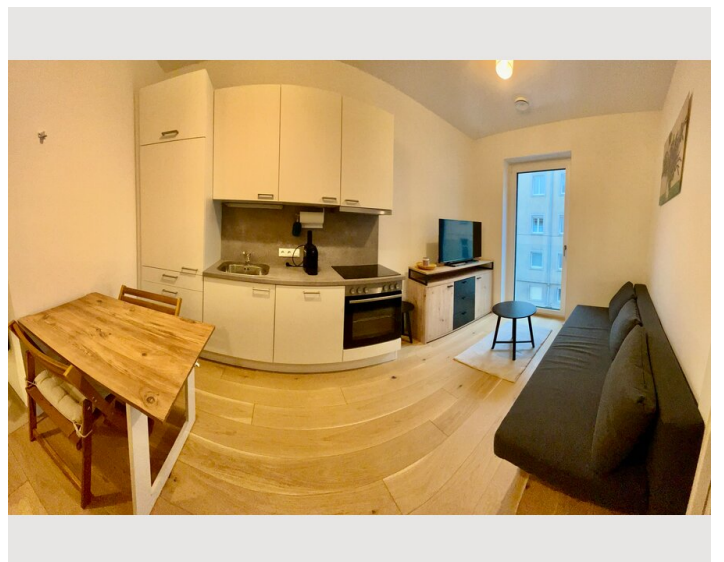
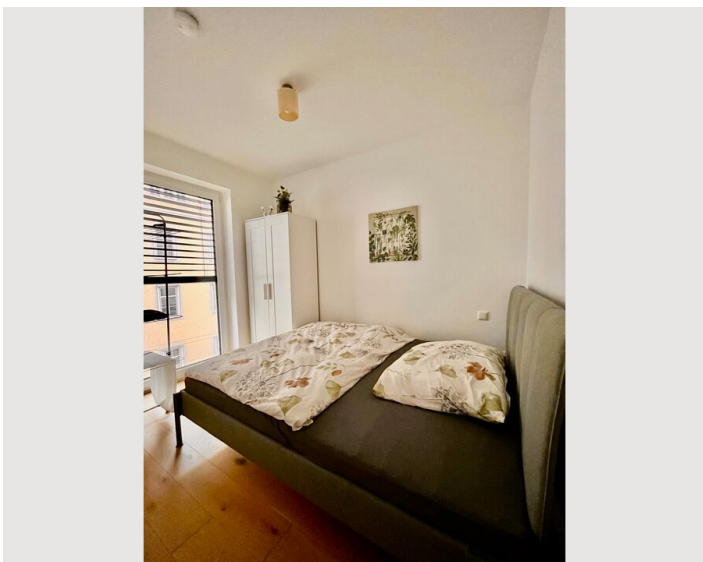
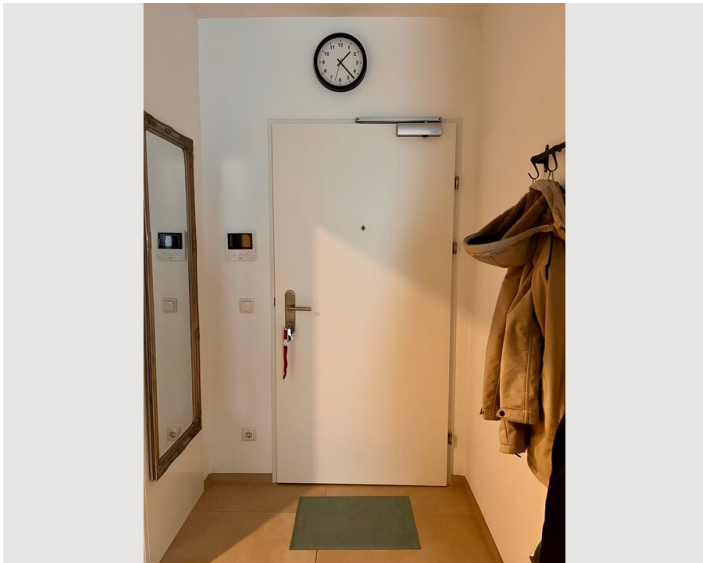
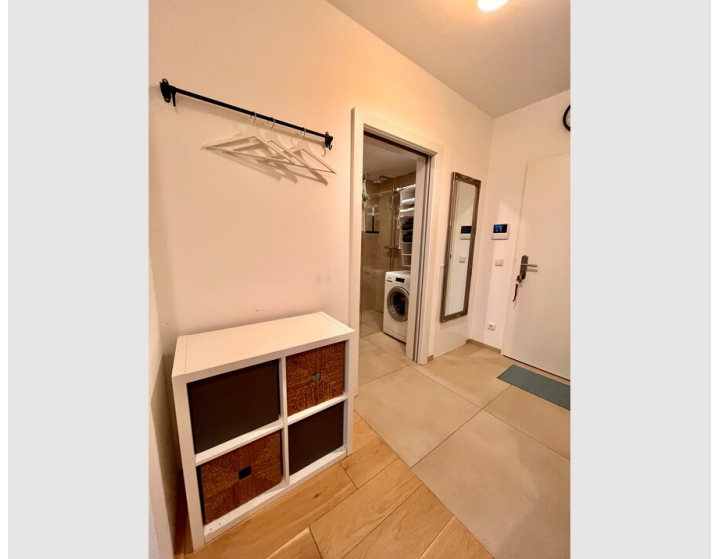
### Kitchen

- Private kitchen
- Glasses/Tableware
- Dishwasher
- Cooking utensils
- Espresso machine

## Informations

- Suitable for construction workers
- Smoking not allowed
- Private entrance
- Bicycle room free of charge
- Suitable for children
- Short-term parking zone subject to a charge
- Pets forbidden

## Picture gallery



## Infrastructure



Absolutely central location: 250 meters to Landstraße and the tram stop, 170 meters to the nearest bus stop, 900 meters to the main square, and 1,000 meters to the train station.

All shops, pharmacies, doctors, etc. are located in the immediate vicinity.

## Location

