



2 ROOM APARTMENT, 5020 SALZBURG

## Furnished 70 m<sup>2</sup> apartment in a quiet location – Salzburg Parsch.

Object number: FSLP1

[View and rent online](#)

Furnished approx. 70 sqm apartment in a green setting – ideal for commuters or project-based professionals (minimum 6 months).

|                          |                     |
|--------------------------|---------------------|
| <b>Period</b>            | 06/04/ - 06/05/2026 |
| <b>Number of persons</b> | 2                   |
| <b>Total incl. VAT.</b>  | € 2.215,04          |
| <b>Security deposit</b>  | € 1.700,00          |



### Living space

70m<sup>2</sup>



### Maximum occupancy

2 Persons



### Complete accommodation <sup>?</sup>

1 Private bathroom 2 Shared bedrooms



### 1. floor



### Check-in

10:30 - 12:30 Clock



### Check-out

14:00 - 15:00 Clock

## Sleeping options

### Living & Sleeping 1



1x Double bed (1,40 m x 2 m)

### Living & Sleeping 2



1x Sofa bed (2 persons)

## Descripton of accommodation

This approx. 70 m<sup>2</sup>, fully furnished apartment is located in an absolutely quiet setting in the middle of the forest at the foot of the Gaisberg, offering a high-quality living environment for commuters or project-based professionals working in Salzburg for a limited period.

The apartment features a beautiful green outlook, a pleasant living atmosphere, and a parking space directly in front of the property. The furnishings allow for immediate move-in with no additional effort, making it ideal for temporary living with a minimum stay of 6 months.

Despite its natural surroundings, public transport connections are excellent:

Bus line 6 is reachable within approximately 5 minutes on foot, and the Salzburg Parsch S-Bahn station is about a 12-minute walk away. This ensures quick access to the city center, main train station, and key business locations.

The surrounding area offers a high quality of life with direct access to nature, walking, and hiking trails—an ideal retreat after a working day.

### Equipment & Features



#### Basic equipment

- Terrace
- Internet/Wifi
- Bedclothes
- Private parking space
- Garden
- TV
- Towels
- Cleaning utensils



#### First supply

- Toilet paper
- Soap
- shampoo
- Nespresso capsules



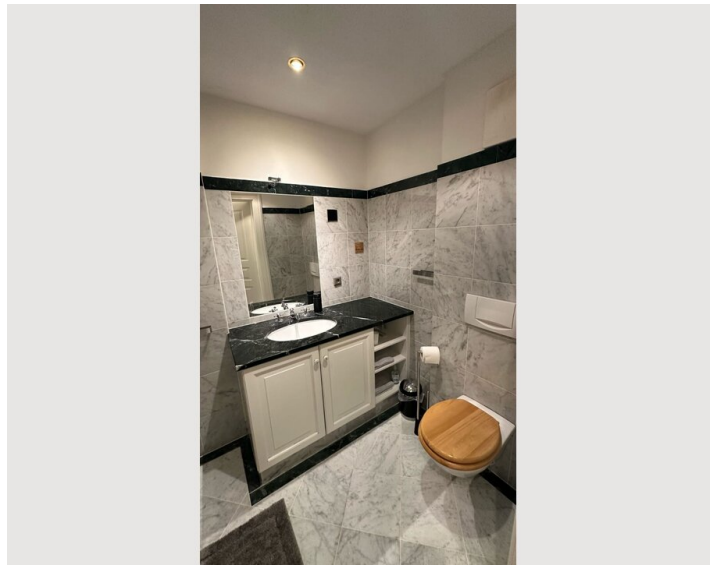
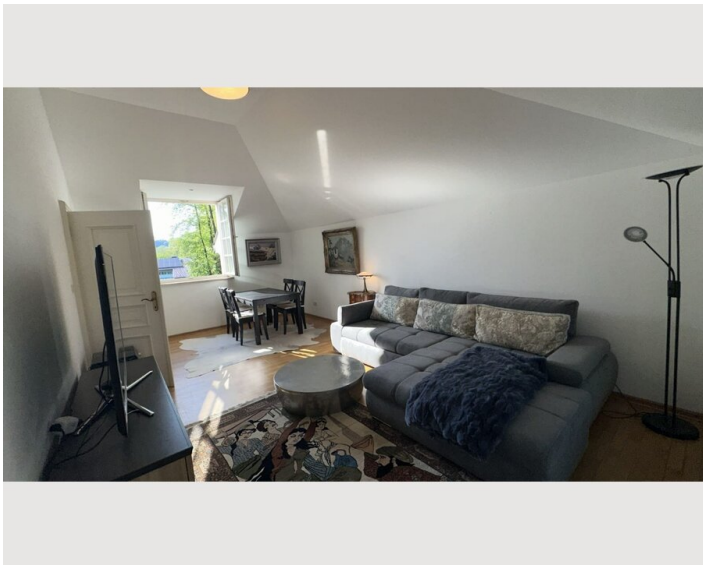
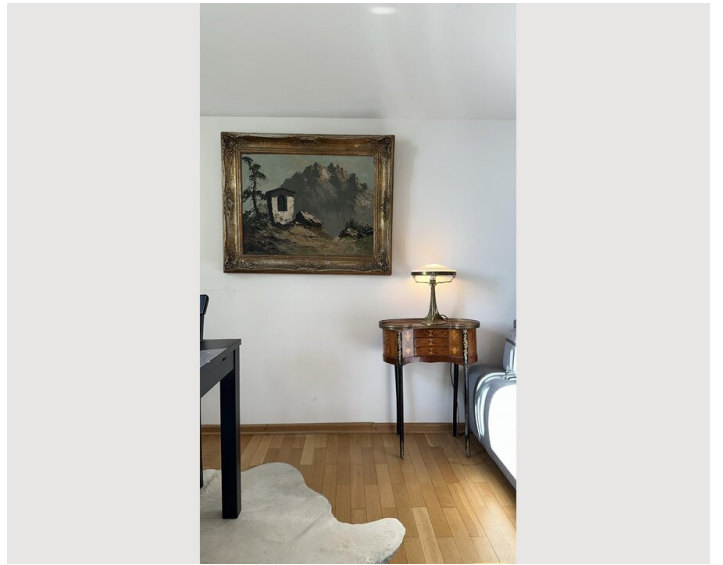
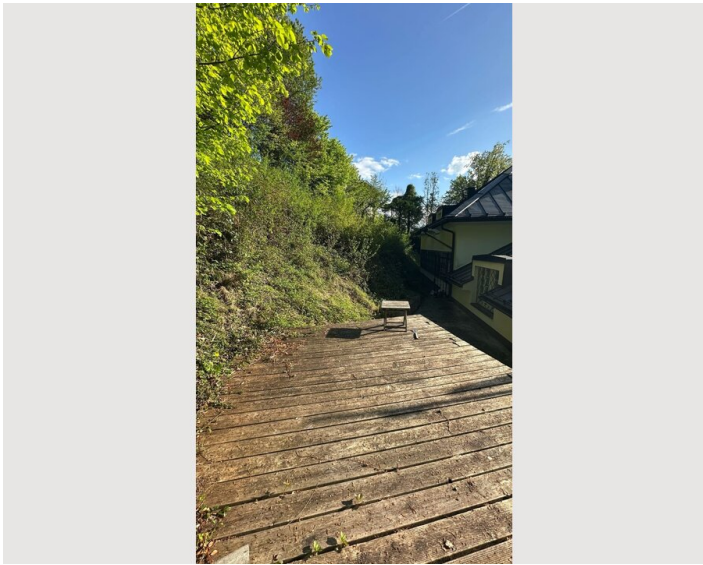
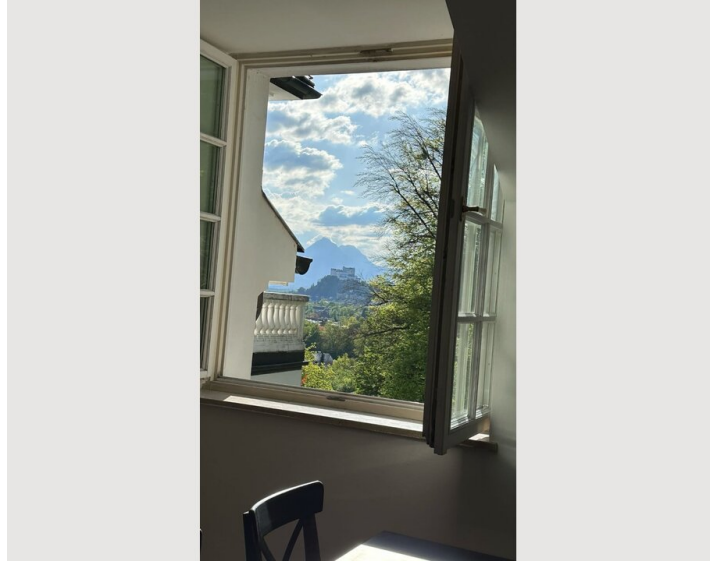
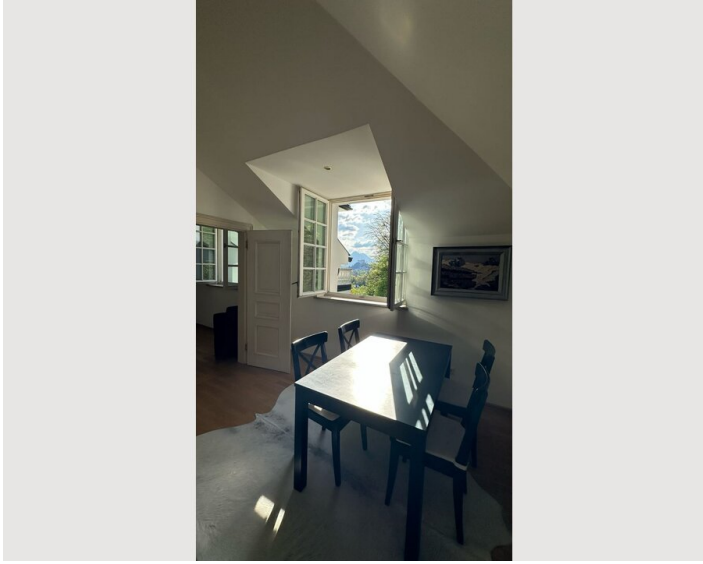
#### Kitchen

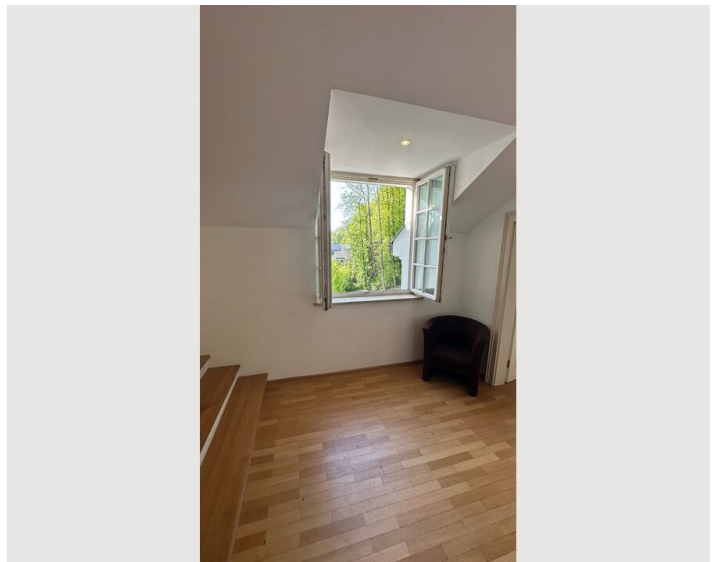
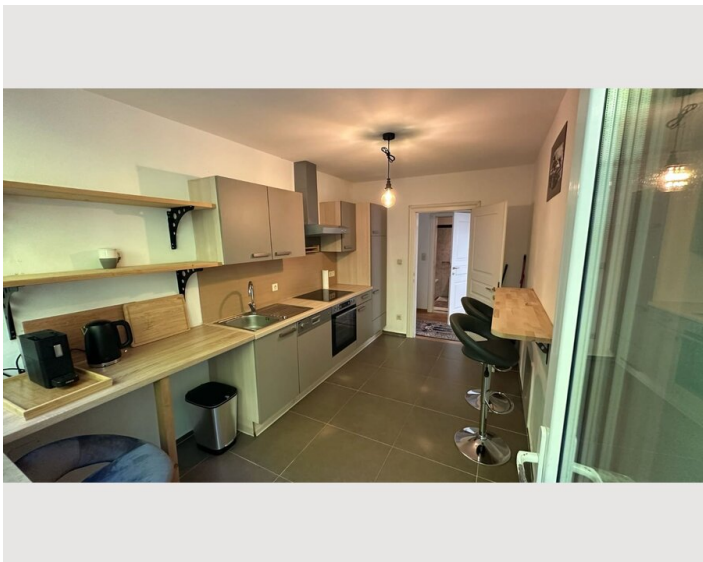
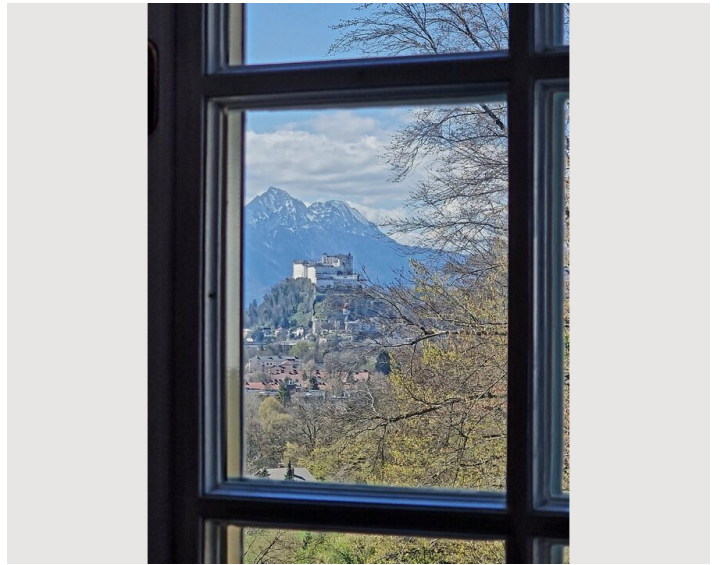
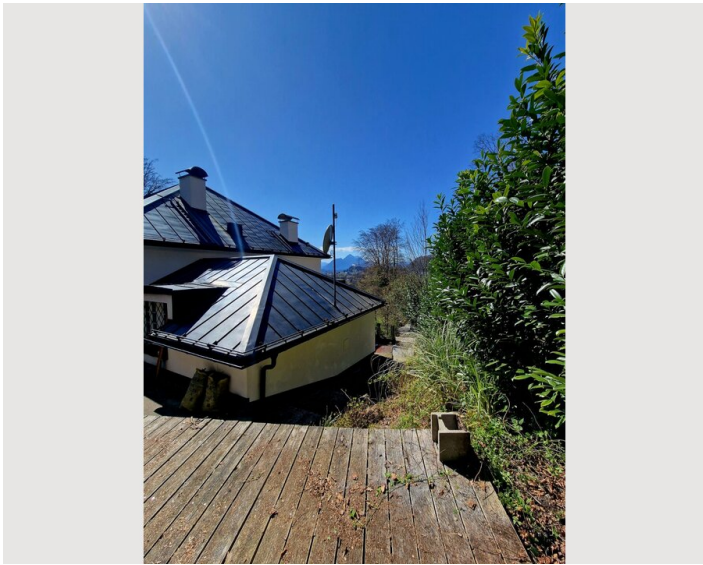
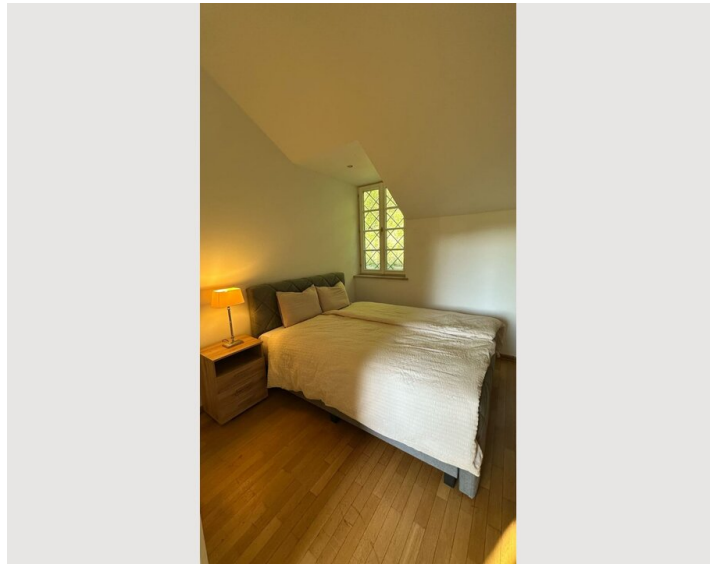
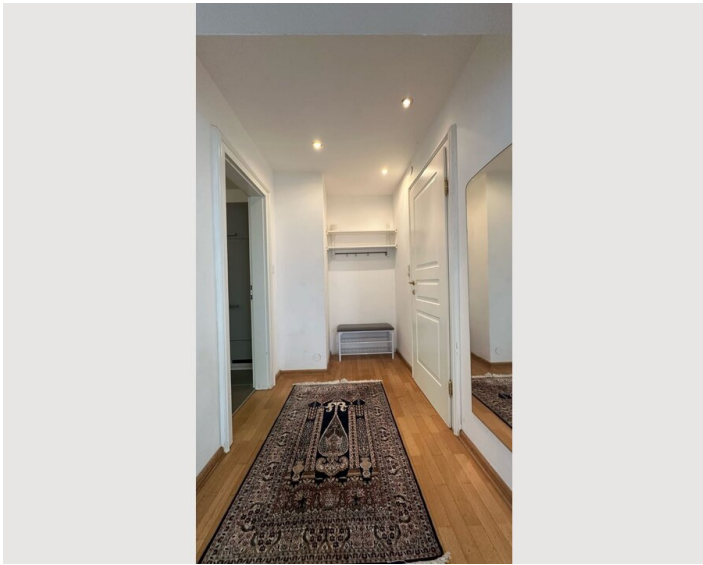
- Private kitchen
- Glasses/Tableware
- Dishwasher
- Cooking utensils
- Espresso machine

### Informations

- Smoking not allowed
- Pets on request
- Private entrance
- Regular cleaning at extra cost

## Picture gallery





## Infrastructure



The apartment offers excellent infrastructure while maintaining a peaceful location:

Parking right in front of the door for convenient access.

Supermarket within approximately 12 minutes on foot for daily needs.

Bus connections just 5–10 minutes on foot, providing quick access to the city.

Doctors and medical services in the immediate vicinity.

S-Bahn Salzburg Parsch station within 12–15 minutes on foot, ideal for commuters.

This ensures that both daily errands and connections to workplaces or the city center are easily accessible.

## Location

