



2 ROOM APARTMENT, 4020 LINZ

2-ROOM NEWLY BUILT APARTMENT – FIRST OCCUPANCY IN A QUIET AND EXCLUSIVE LOCATION IN THE WESTERN CITY CENTER OF LINZ

Object number: HHHM1

[View and rent online](#)

FIRST OCCUPANCY: New, fully furnished apartment with private terrace for short-term rent in a quiet and central location at Froschberg. Very good infrastructure, barrier-free, modern and comfortably furnished. Underground parking space available.

Period	22/05/ - 22/06/2026
Number of persons	2
Total incl. VAT.	€ 2.783,10
Security deposit	€ 2.000,00



Living space

44m²



Maximum occupancy

3 Persons



Complete accommodation [?]

1 Private bathroom 1 Separated bedroom



Ground floor

Elevator available



Check-in

15:00 - 17:00 Clock



Check-out

10:00 - 12:00 Clock

Sleeping options

Sleeping room



1x Double bed (1,80 m x 2 m)

Description of accommodation

Temporary Living in Linz!

First Occupancy: New, fully furnished apartment for short-term rent in a quiet, exclusive, and central location at Froschberg, in close proximity to large parks. A private terrace and shared garden invite you to relax. Additionally, an underground parking space is available for a fee.

The apartment is located on the ground floor with a covered terrace, barrier-free, modern, and comfortably furnished.

Excellent infrastructure—parks, shopping facilities, and public transportation are within walking distance. The apartment is located near the train station. Basement storage unit, elevator, and underground garage available.

Optional: Bookable service package for short-term rentals (regular cleaning, shopping service). Ideal for temporary stays starting from one month.

Kitchen: Spacious kitchen with dishwasher and fridge-freezer combination, ceramic hob and fully automatic coffee machine.

Includes dishes, pots, pans, tableware such as plates, cups, cutlery, kettle...

Large dining table for 4 people with chairs, also usable as a desk.

TV cabinet with large 55-inch TV incl. 250 Mbit internet

BIG SOFA with sleeping function for 2 people.

Bedroom: One double bed 180 × 200 cm with two bedside tables (with lighting).

A wardrobe with plenty of storage space, 271 cm wide.

Equipment & Features



Basic equipment

- Terrace
- Internet/Wifi
- Private washing machine
- Bedclothes
- Private toilet
- Vacuum cleaner
- Cleaning utensils
- Garden sharing
- TV
- Private dryer
- Towels
- Private parking space
- Iron & ironing board
- Hairdryer



First supply

- Toilet paper
- Soap
- Fridge filling on request
- shampoo
- Nespresso capsules



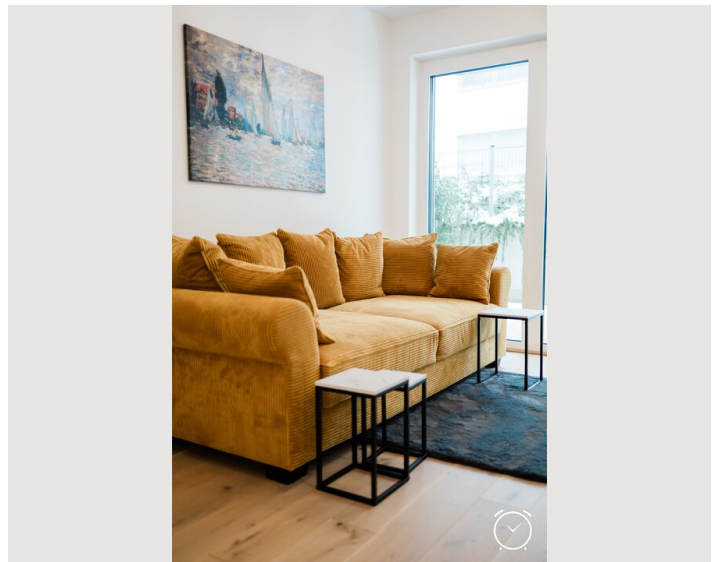
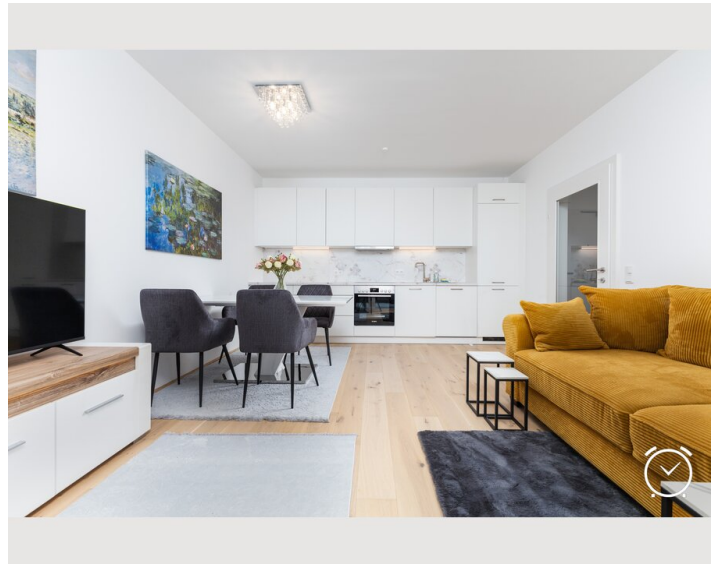
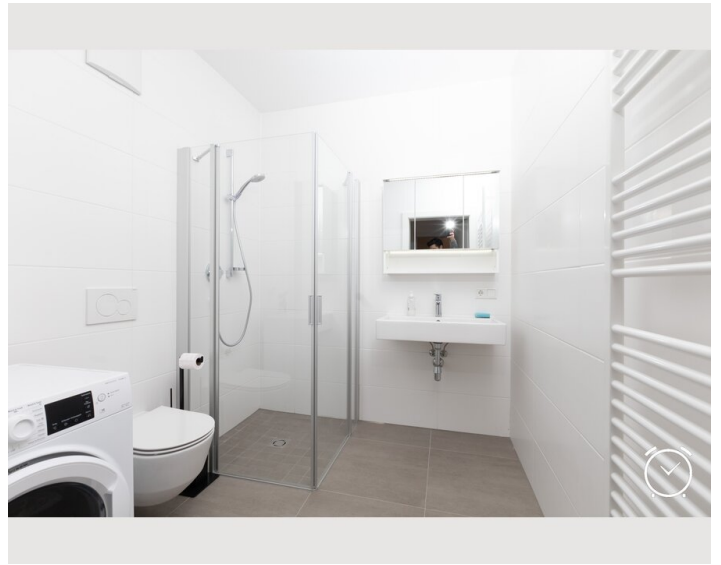
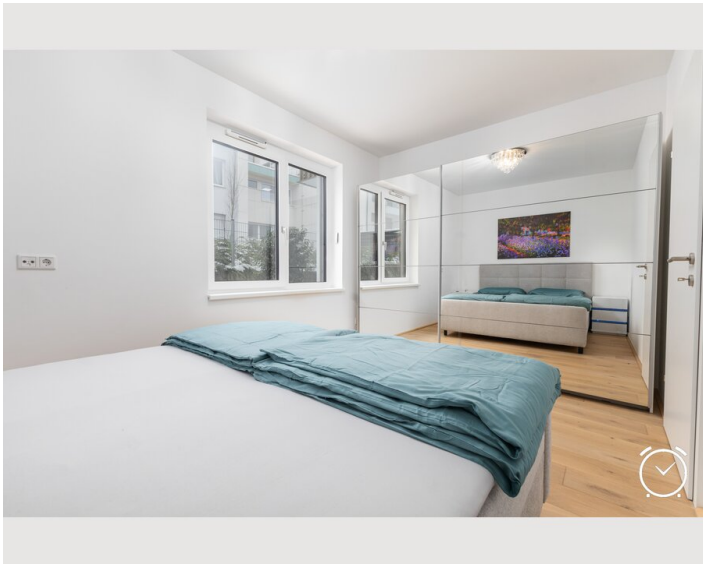
Kitchen

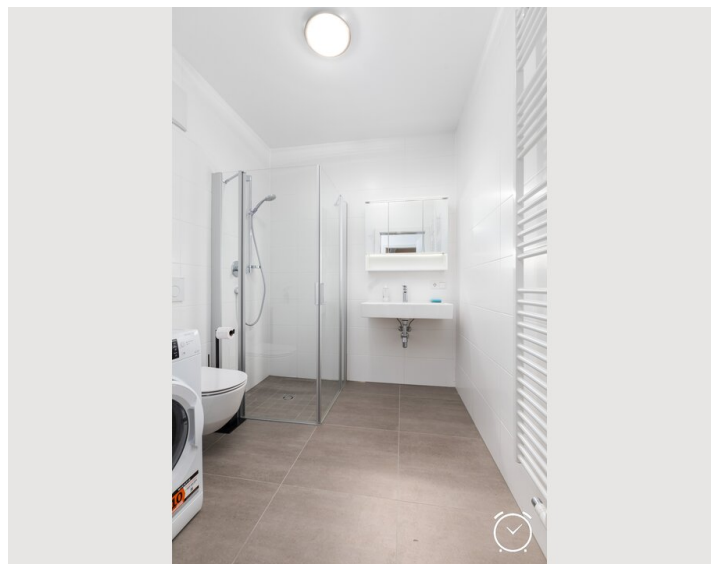
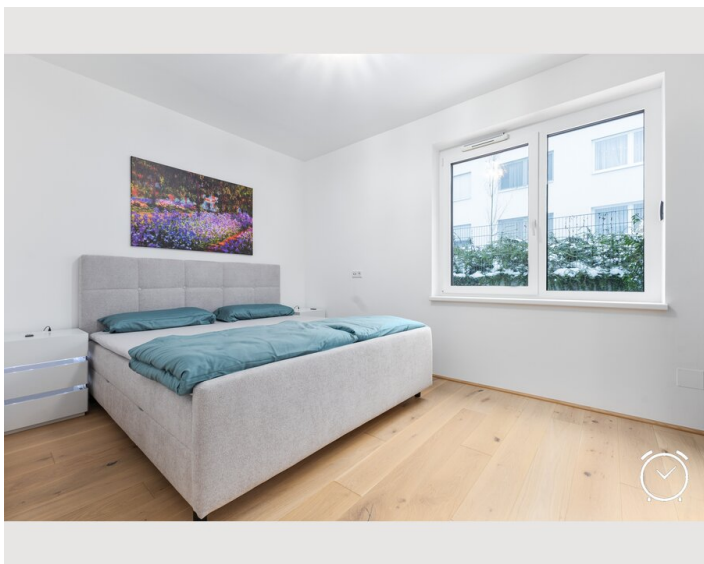
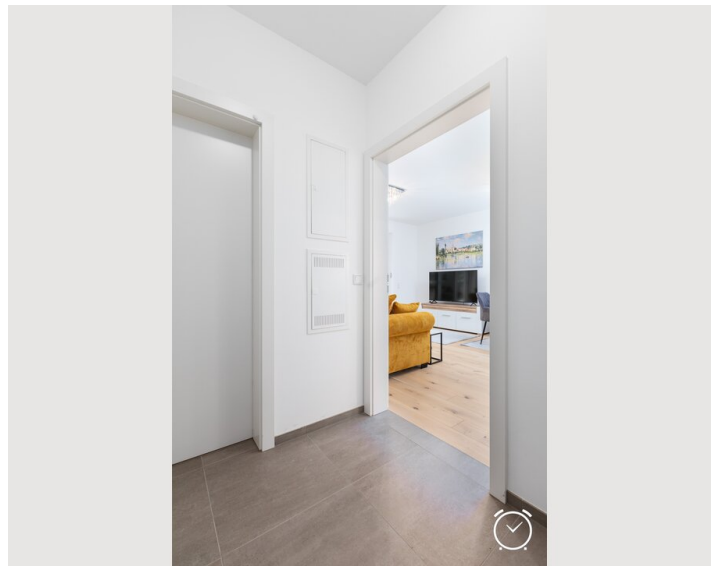
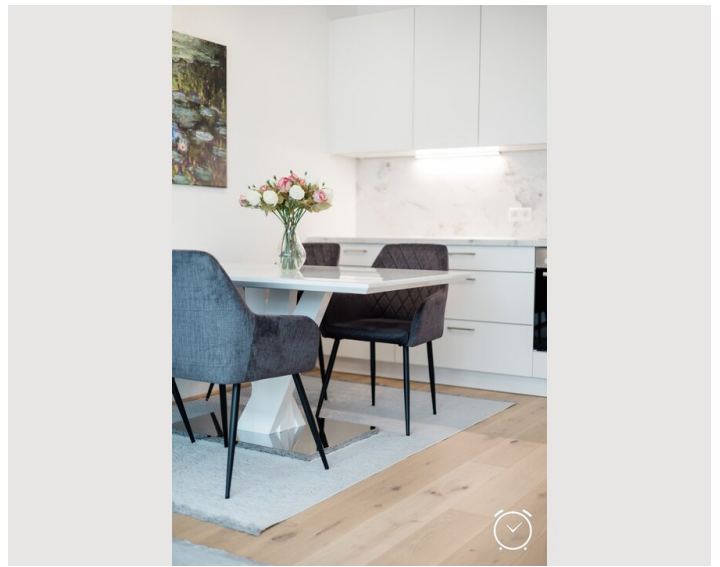
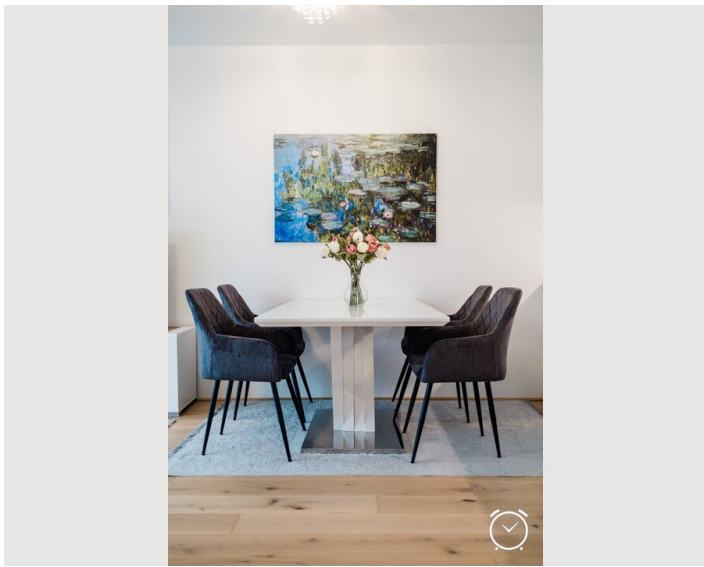
- Private kitchen
- Glasses/Tableware
- Dishwasher
- Cooking utensils
- Espresso machine

Informations

- Smoking not allowed
- Regular cleaning at extra cost
- Pets on request
- Bicycle room free of charge

Picture gallery






Video

Goto Video



Infrastructure

 within walking distance

 15 minutes on foot, 2–3 minutes by bus/car

 within walking distance

 reachable in 20 minutes by car

Excellent infrastructure: Doctor, physiotherapy, and massage services in the immediate vicinity. Supermarket, café, bank, and bus stop within walking distance. Close to the train station.

Location

