

2 ROOM APARTMENT, 1030 VIENNA

Stylish apartment in a historic building in a prime location

Object number: BEGU1

[View and rent online](#)

Stylish apartment in a historic building for short-term rent in the 3rd district. A perfect temporary home with spacious and cozy rooms that invite you to relax. The bedroom is equipped with a large bed as well as a walk-in closet.

Period	04/05/ - 04/06/2026
Number of persons	2
Total incl. VAT.	€ 1.829,92
Security deposit	€ 1.300,00



Living space

70m²



Maximum occupancy

3 Persons



Complete accommodation [?]

1 Private bathroom 1 Separated bedroom



1. floor

Elevator available



Check-in

10:00 - 20:00 Clock



Check-out

12:00 - 18:00 Clock

Sleeping options

Sleeping room



1x Double bed (2 m x 2 m)

Descripton of accommodation

An apartment to feel at home in: Located in the heart of the 3rd district, this short-term rental apartment stands out above all for its spacious, bright rooms. The living room features a comfortable couch as well as a dining area. The kitchen is equipped with all the utensils you need for a pleasant stay. The bedroom is very spacious thanks to the walk-in closet and the large bed. There is also a large wardrobe in the entrance area. The Venetian-style bathroom with gold mirror paneling is another eye-catching highlight.

Equipment & Features



Basic equipment

- Internet/Wifi
- TV
- Bedclothes
- Private toilet
- Iron & ironing board
- Hairdryer
- Music system/docking station
- Private washing machine
- Towels
- Vacuum cleaner
- Cleaning utensils



First supply

- Toilet paper
- Soap
- shampoo
- Nespresso capsules



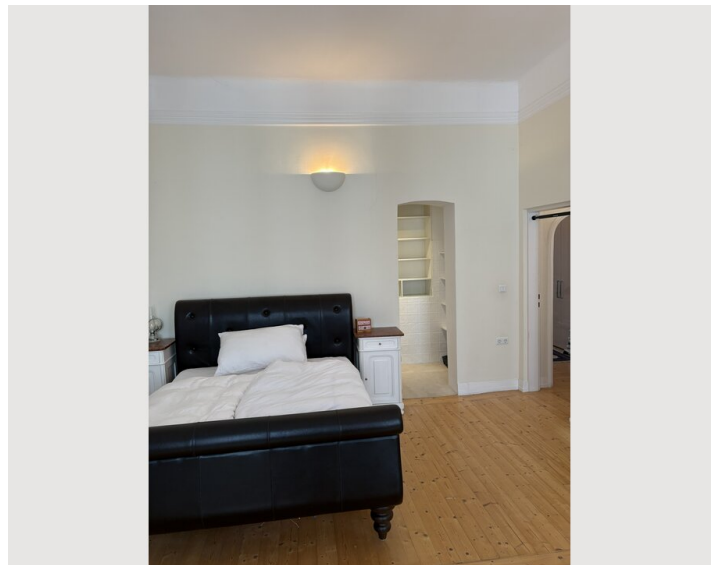
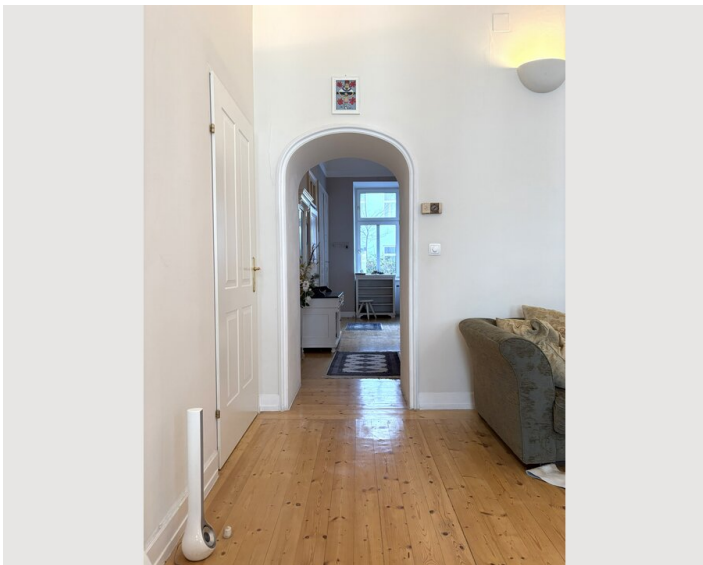
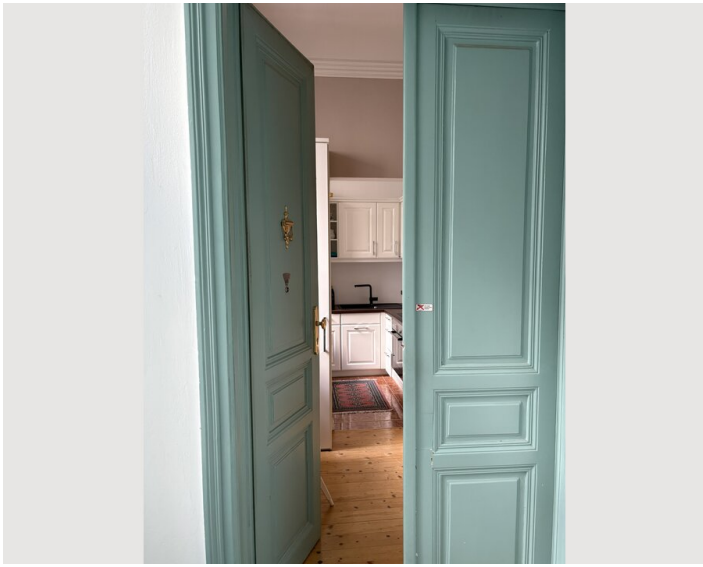
Kitchen

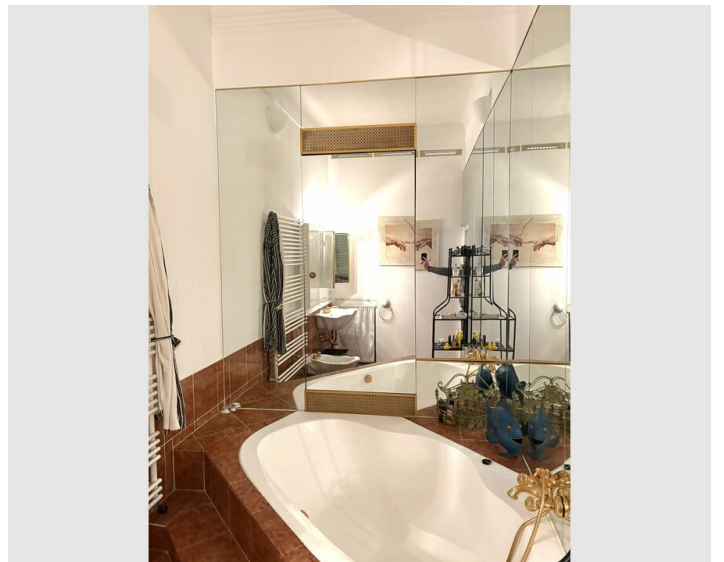
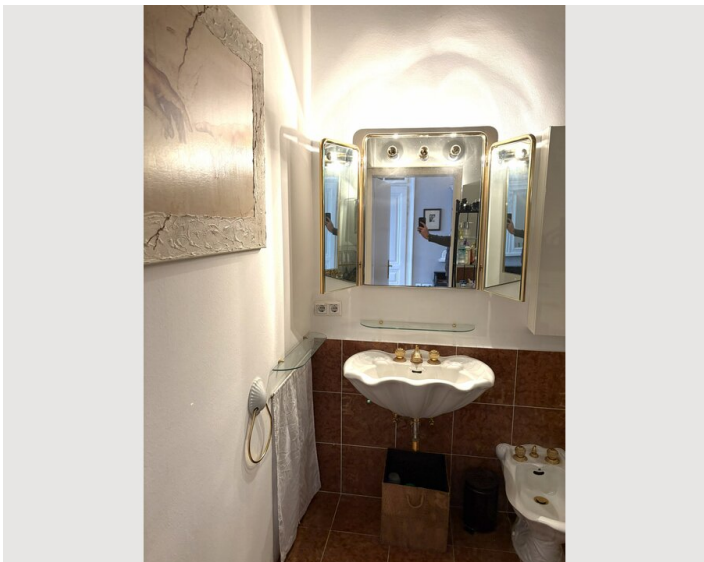
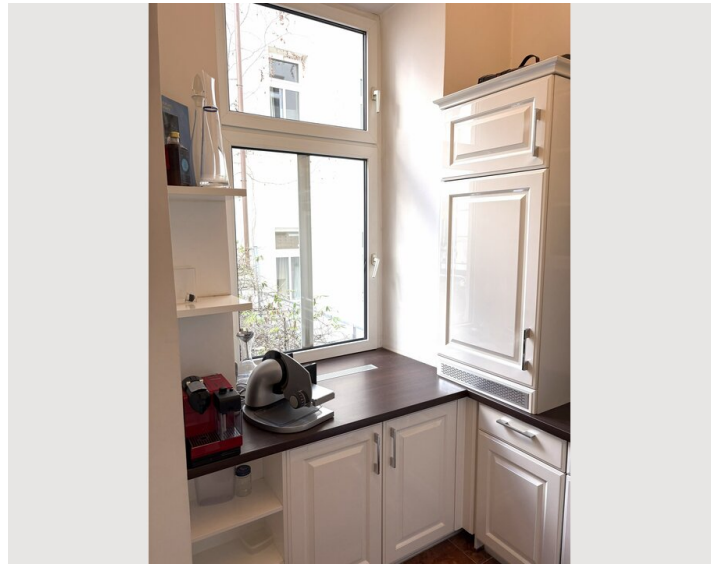
- Private kitchen
- Glasses/Tableware
- Dishwasher
- Cooking utensils
- Espresso machine
- Steam cooker

Informations

- Short-term parking zone subject to a charge
- Bicycle room free of charge
- Pets forbidden

Picture gallery





Infrastructure

📍 only 3 stations to the center

🚌 bus stopp 100m

🚶 20 min.

🚊 100m

Only 100 meters to the nearest bus and tram stop.

Belvedere Palace is just a few hundred meters away (2 tram stops).

All local amenities are in the immediate vicinity (Spar, Billa – only 100 meters, pharmacy 200 meters).

Klinik Landstraße is 100 meters away.

Location

