



2 ROOM APARTMENT, 1030 VIENNA

Charming and wonderful furnished centrally located appartement near Belvedere garden and Central station (Hauptbahnhof)

Object number: MAYQ1

[View and rent online](#)

very charming centrally located appartement next to Belvedere Gardens and Schweizergarten, 5 minutes to new Central Station (Hauptbahnhof), which is ideally connected to all public transportation. The Station Rennweg is nearby, also Shops and tram.

Period	25/06/ - 25/07/2026
Number of persons	2
Total incl. VAT.	€ 2.238,33
Security deposit	€ 1.700,00



Living space

62m²



Maximum occupancy

2 Persons



Complete accommodation [?]

1 Private bathroom 1 Separated bedroom



4. floor

Elevator available



Check-in

14:00 - 19:00 Clock



Check-out

08:00 - 12:00 Clock

Sleeping options

Sleeping room



1x Double bed (1,80 m x 2 m)

Descripton of accommodation

The appartement is on the 4th floor and has got 62 m² , it is sunny and quiet. Totally renovated and completely furnished, including white laundry and fluffy white towels.

Kitchen has got a breakfast Corner with Nespresso macine, dish-washer a breakfast Corner, oven, fridge, window, silverware, Cups and plates.

Bedroom with XXL king size double bed, comfortable Chair and desk.

Large Living-Dining room with Dining table and cozy Couch and Flat screen TV

Equipment & Features



Basic equipment

- TV
 - Bedclothes
 - Private toilet
 - Iron & ironing board
 - Private washing machine
 - Towels
 - Vacuum cleaner
 - Hairdryer
-



First supply

- Toilet paper
 - Soap
 - Fridge filling on request
 - shampoo
 - Nespresso capsules
-



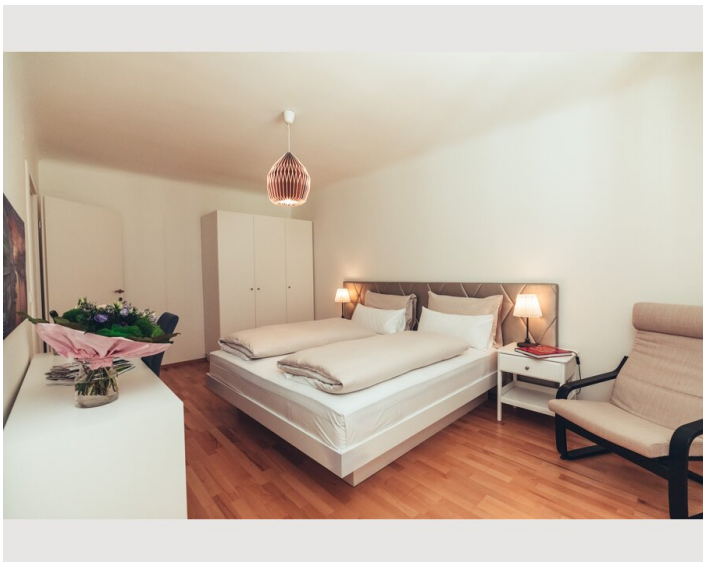
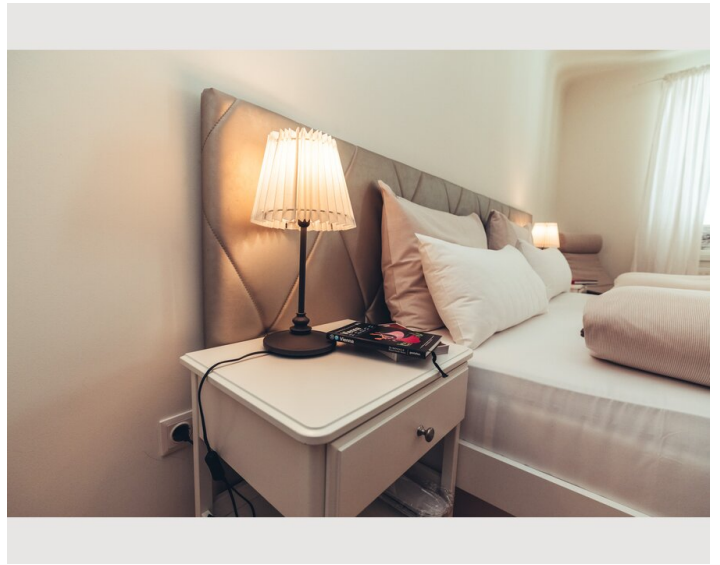
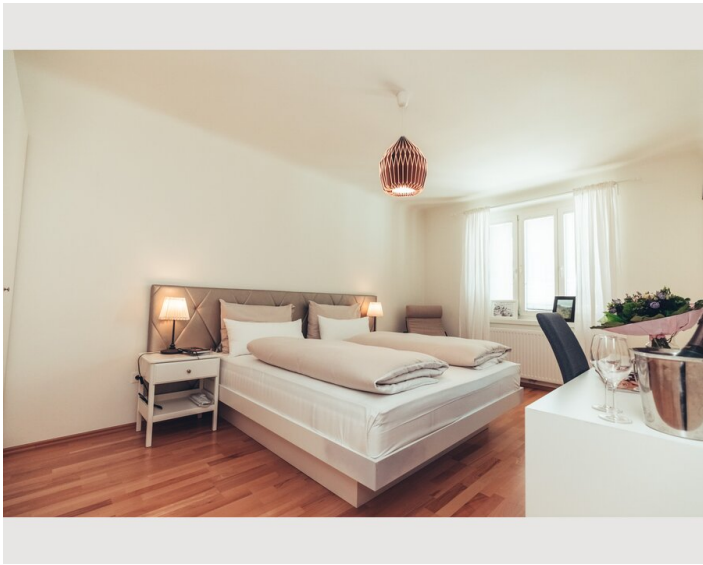
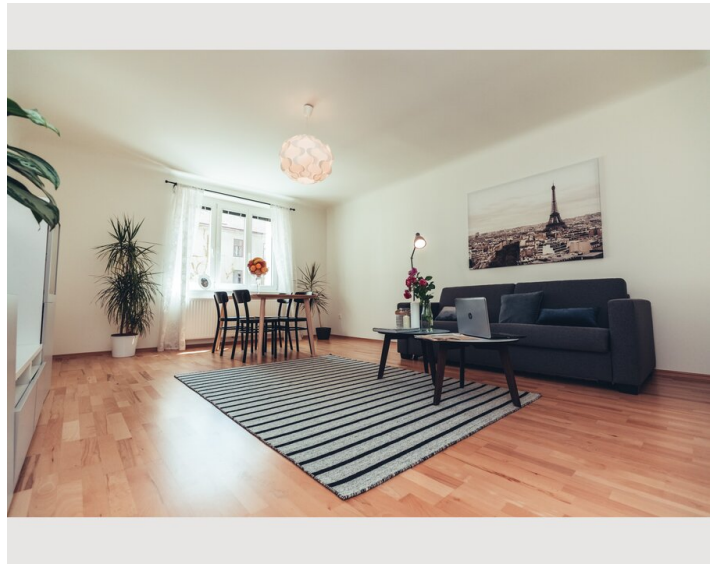
Kitchen

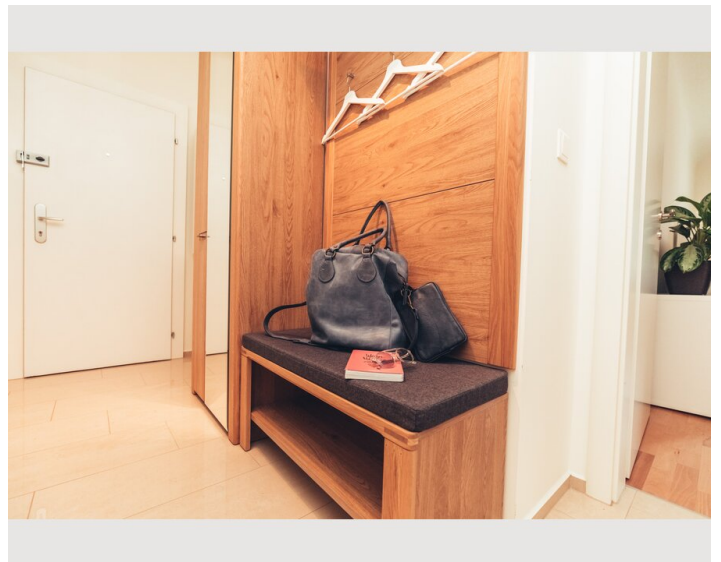
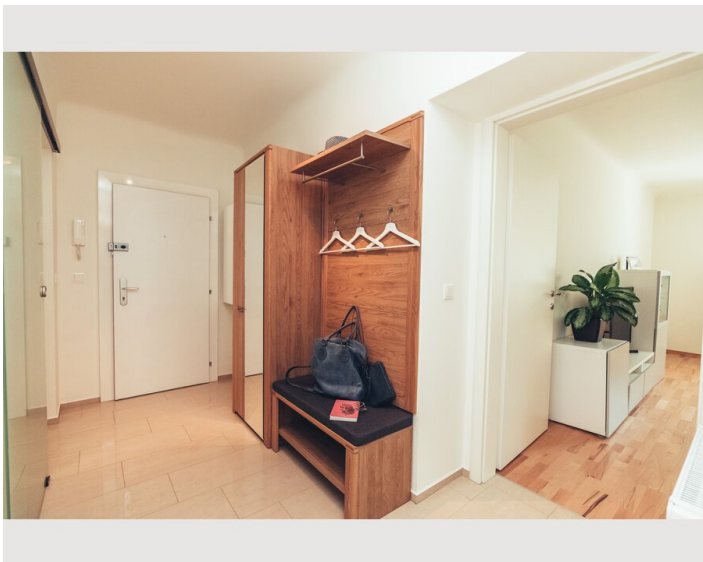
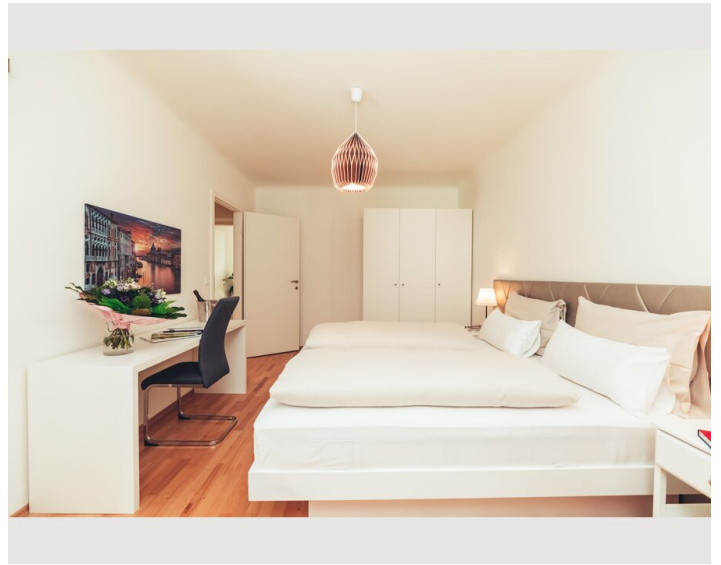
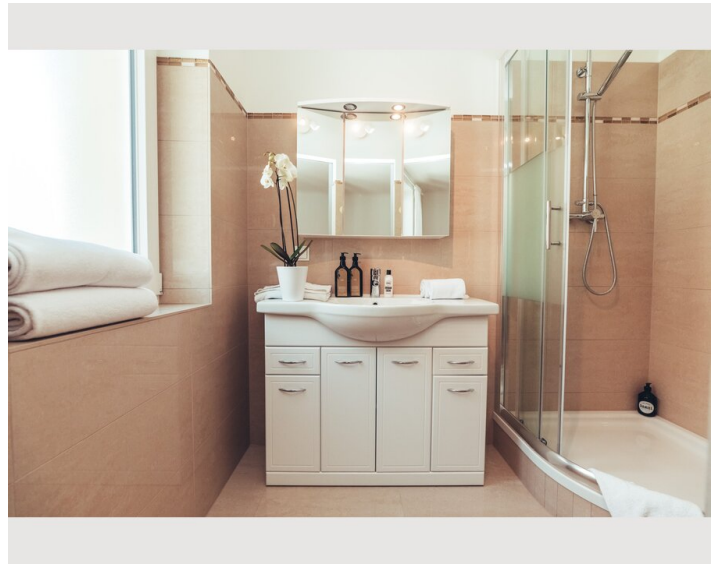
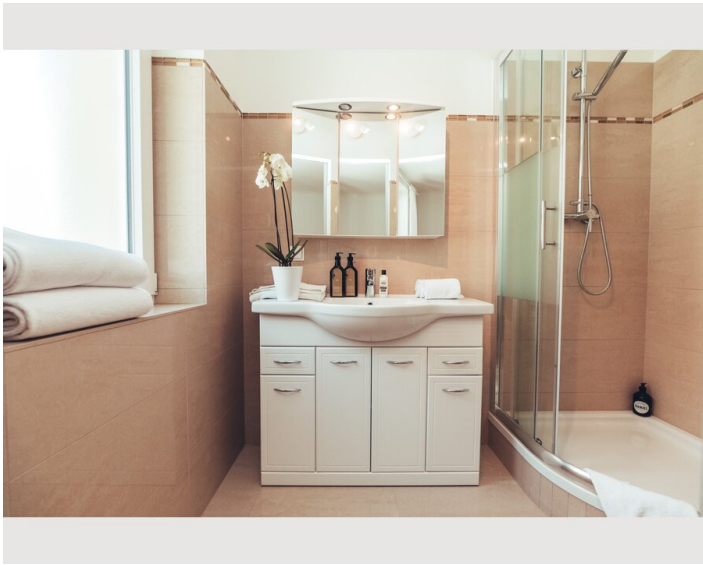
- Private kitchen
- Glasses/Tableware
- Dishwasher
- Cooking utensils
- Espresso machine

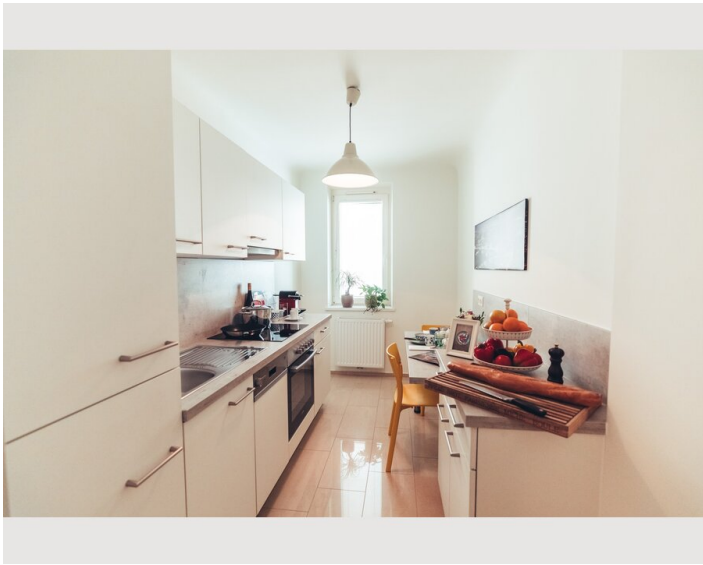
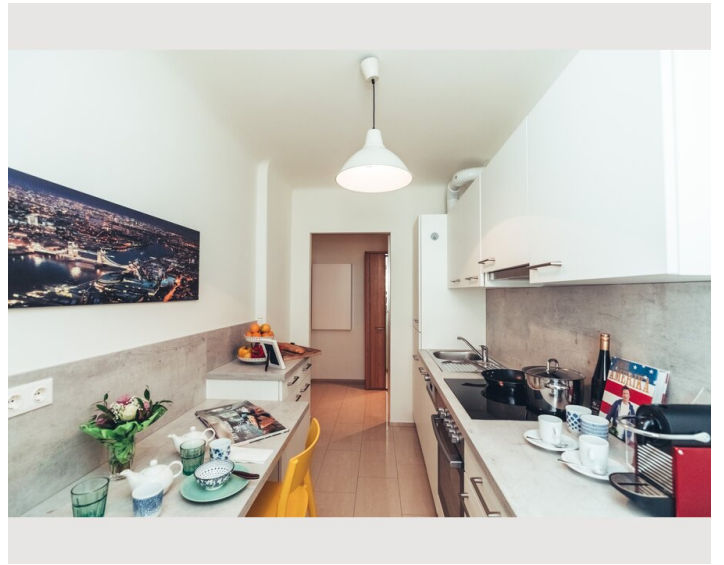
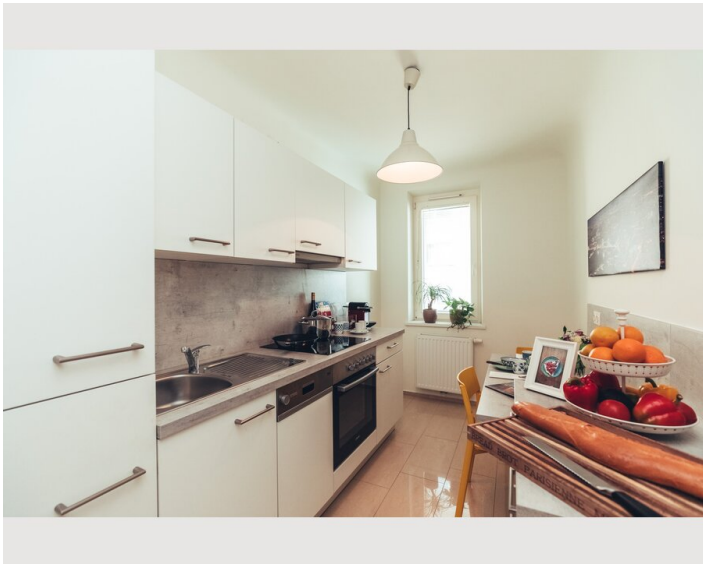
Informations

- Suitable for children
- Short-term parking zone subject to a charge
- Pets forbidden
- Bicycle room free of charge
- Smoking not allowed
- Desk/Workplace
- Regular cleaning at extra cost

Picture gallery







Infrastructure

© Near Vienna train station, near Rennweg and near trams (around the corner - 3 min. walk). Shops nearby.

🛒 nearby / around the corner at Fasangasse are a lot of shops

✋ easy to reach, by Airport Train (CAT or ÖBB) from Station Rennweg within 20 minutes. to get to Rennweg station it takes 11 min. by walk or 12 min. by tram. 11 min. walking distance or 8 min. to reach by tramnweg (Cat Airport Train)

centrally located appartement next to Belvedere Gardens and Schweizergarten where you can relax and walk. 5 minutes to new Central Station (Hauptbahnhof), which is ideally connected to all public transportation. Also the Railway Station "Rennweg" is nearby, where you can easily catch a train to the Vienna Airport (CAT Airport Train or public ÖBB trains, subway).

Shops are nearby e.g. in Fasangasse which is around the corner where you find also Tram stations "Fasangasse" (line 18 and O) and "Kölblgasse" (line O and 1).

Location

