



2 ROOM APARTMENT, 9210 PÖRTSCHACH AM WÖRTHERSEE

Charming flat in Pörtschach am Wörthersee

Object number: ZRQG1

[View and rent online](#)

This beautiful and charming 2-room flat in Pörtschach am Wörthersee is centrally located and within walking distance of the lake. It has a spacious south-facing terrace. A private carport belongs to the flat.

Period	05/04/ - 05/05/2026
Number of persons	2
Total incl. VAT.	€ 2.163,10
Security deposit	€ 1.700,00



Living space

50m²



Maximum occupancy

4 Persons



Complete accommodation [?]

1 Private bathroom 1 Separated bedroom



2. floor

Elevator available



Check-in

14:00 - 21:00 Clock



Check-out

07:00 - 12:00 Clock

Sleeping options

Sleeping room



2x Double bed (1,80 m x 2 m)



2x Sofa bed (2 persons)

Description of accommodation

This modern 2-room flat (built in 2016) is centrally located in Pörschach am Wörthersee, nestled in a quiet side street. It is only a few minutes' walk from Lake Wörthersee. The newly furnished flat has approx. 46 m² of living space and a spacious, covered south-facing loggia of approx. 15 m² with a view of the mountains.

Layout:

Living/dining area with integrated kitchen (including cooking utensils, crockery, glasses, cutlery), dining table and cosy living area with pull-out couch for two people and Smart TV.

Separate bedroom with double bed, two bedside tables and large wardrobe.

Modern bathroom with shower, WC, towel dryer and washing machine.

Entrance hall with large wardrobe and storage space.

Special features:

15m² south-facing loggia with lounge area and dining table.

Private carport parking space.

Lift in the residential building.

Free bicycle storage room.

Storage room with electricity connection behind the carport on request (additional fees).

Equipment & Features



Basic equipment

- Loggia
- TV
- Private toilet
- Vacuum cleaner
- Hairdryer
- Internet/Wifi
- Private washing machine
- Private parking space
- Iron & ironing board



First supply

- Toilet paper
- Nespresso capsules
- Soap



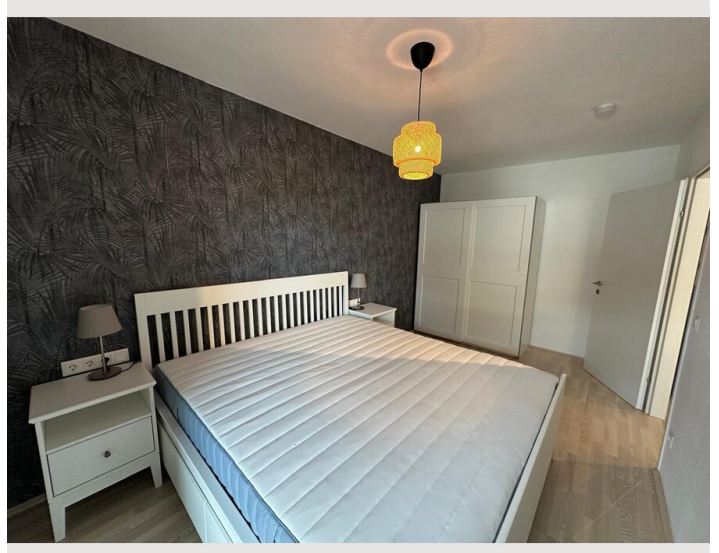
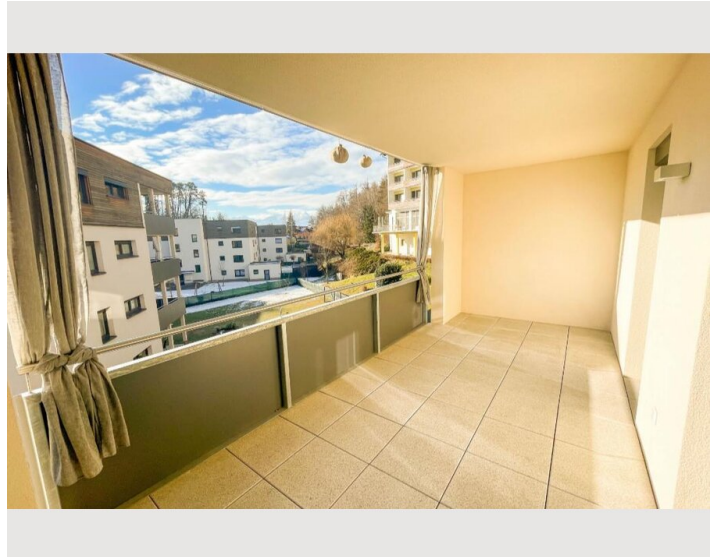
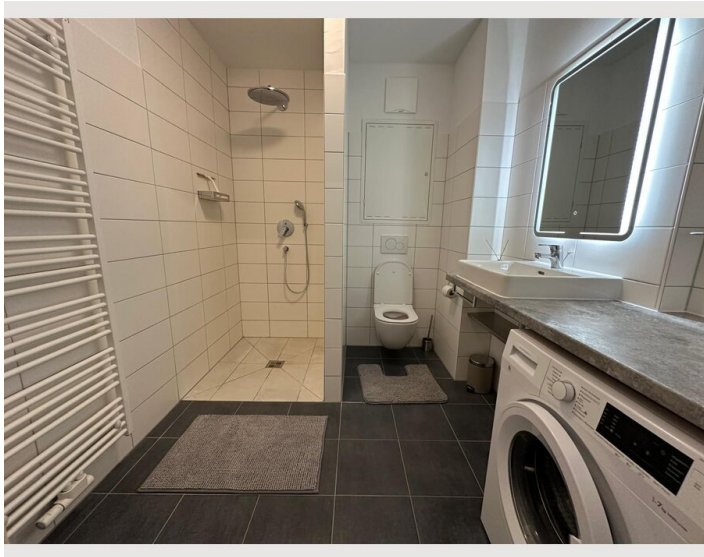
Kitchen

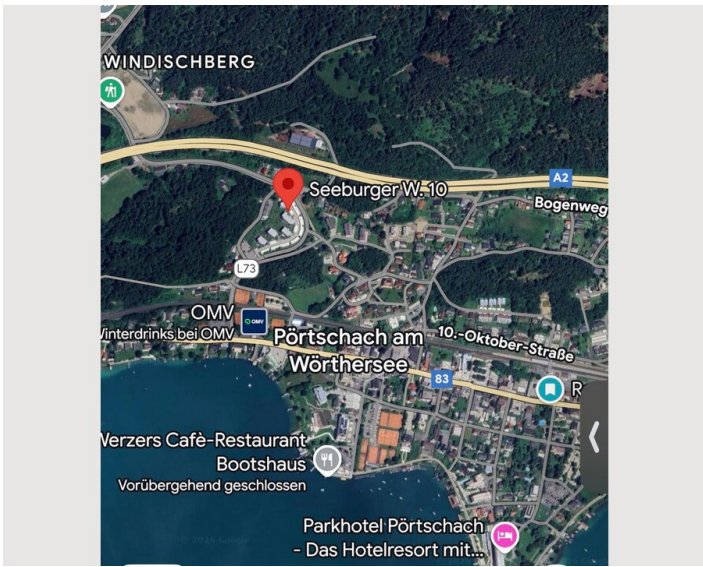
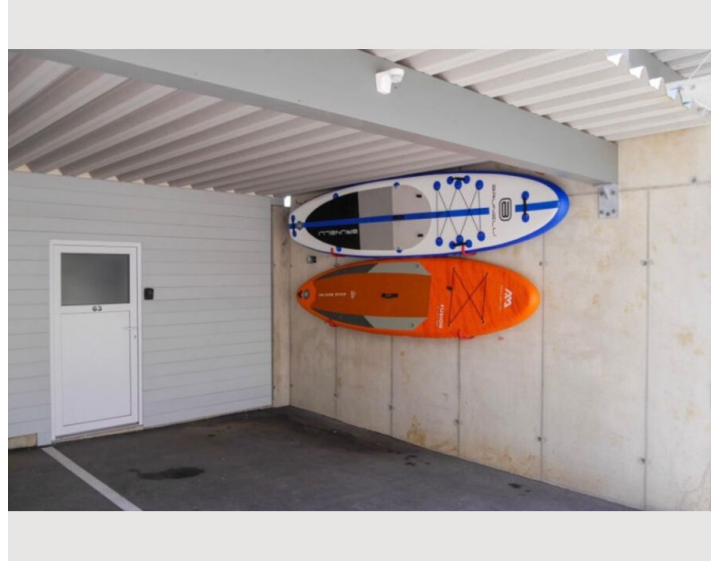
- Private kitchen
- Glasses/Tableware
- Dishwasher
- Cooking utensils
- Coffee machine

Informations


- Suitable for construction workers
- Smoking not allowed
- Bicycle room free of charge
- Suitable for children
- Pets on request


Picture gallery






Infrastructure

 950m

 Hofer 2km

 750m

 Klagenfurt 20km

 Billa 650m

The flat is just a few minutes' walk from Lake Wörthersee – about 5 minutes on foot – and the centre of Pörtschach is about an 8-minute walk away. Pörtschach am Wörthersee railway station is about a 10-minute walk away. The nearest motorway junction towards Vienna or Villach is about a 5-minute drive away.

In Pörtschach, you will find two supermarkets (Billa and Hofer), a drugstore (Bipa), a pharmacy, a post office, two banks, two bicycle shops, several doctors, a Pilates studio, a baker and, in the summer months, a variety of restaurants, bars and cafés.

Pörtschach offers a promenade bath with a water slide and diving tower (distance 1.6 km), three outdoor swimming pools and numerous cycling and hiking trails. The picturesque lake promenade stretches over 2 km and leads along the turquoise-blue Wörthersee. In addition, there is the flower promenade, which runs along the lake and the natural Landspitz.

The town of Velden (approx. 10 minutes by car) offers a great evening programme and the famous Casino Austria on Lake Wörthersee is easily accessible by bike, train, boat or car. In Klagenfurt (approx. 15 minutes by car) you will find shopping facilities, cinemas, cultural programmes, a hospital and many sights.

The 18-hole Moosburg-Pörtschach golf course is only 3.5 km from the flat, and in winter the Gerlitzen Alpe ski area is only 26 km away and offers a winter sports experience of the highest standard.

Location

