



STUDIO APARTMENT, 6100 SEEFELD

Alpine Suite Seefeld - Elegant apartment in the heart of Seefeld with great train connections to Innsbruck

Object number: PDSD1

[View and rent online](#)

This elegant apartment has recently undergone extensive renovations and is centrally located yet quiet in the heart of Seefeld. Great train connections to Innsbruck, Garmisch and Munich in 30min intervals.

Period	07/04/ - 07/05/2026
Number of persons	2
Total incl. VAT.	€ 2.191,36
Security deposit	€ 1.600,00



Living space

45m²



Maximum occupancy

3 Persons



Complete accommodation [?]

1 Private bathroom 1 Living-Sleepingroom



1. floor



Check-in

15:00 - 22:00 Clock



Check-out

05:00 - 10:00 Clock

Sleeping options

Living & Sleeping



1x Double bed (1,80 m x 2 m)



1x Sofa bed (1 person)

Descripton of accommodation

This elegant apartment has recently undergone extensive renovations and enjoys a central yet quiet location in the heart of Seefeld. The Alpine Suite is distinguished by its successful blend of modern and traditional elements. In addition to the well-designed layout, high-quality construction and furnishings, and stunning views of the Karwendel Mountains and the Hohe Munde, the apartment also boasts immediate access to the ski slopes and the village center within easy walking distance. The heart of the apartment is the spacious, open-plan living and sleeping area with a professionally equipped kitchen featuring a Bora induction cooktop and a dishwasher. The stylish bathroom with a walk-in shower is finished to a high standard and tiled with fine stoneware. A private underground parking space, shared ski equipment storage, and a fully equipped laundry room are also available. From a cozy short break for two to an extended family stay, the apartment offers everything you need. The Seefeld train station, with direct connections to Munich and Innsbruck, is within easy walking distance.

Equipment & Features



Basic equipment

- Balcony
- TV
- Community dryer
- Towels
- Garage
- Cleaning utensils
- Internet/Wifi
- Community washing machine
- Bedclothes
- Private toilet
- Vacuum cleaner
- Hairdryer



First supply

- Toilet paper
- Soap



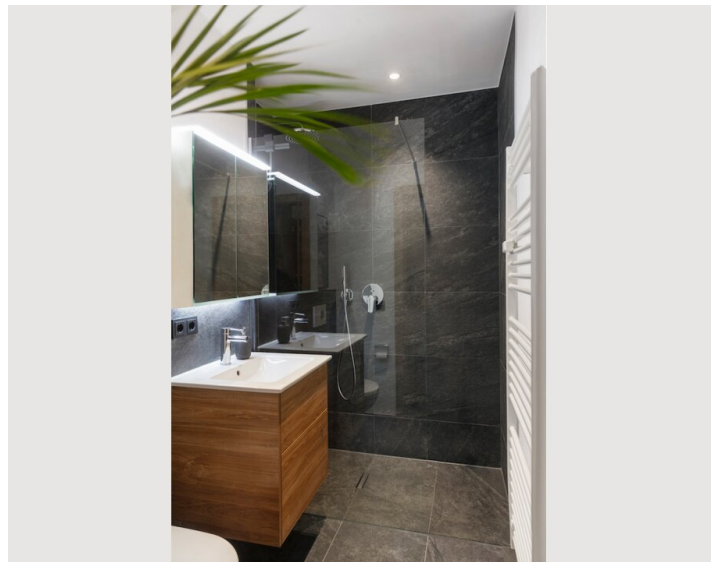
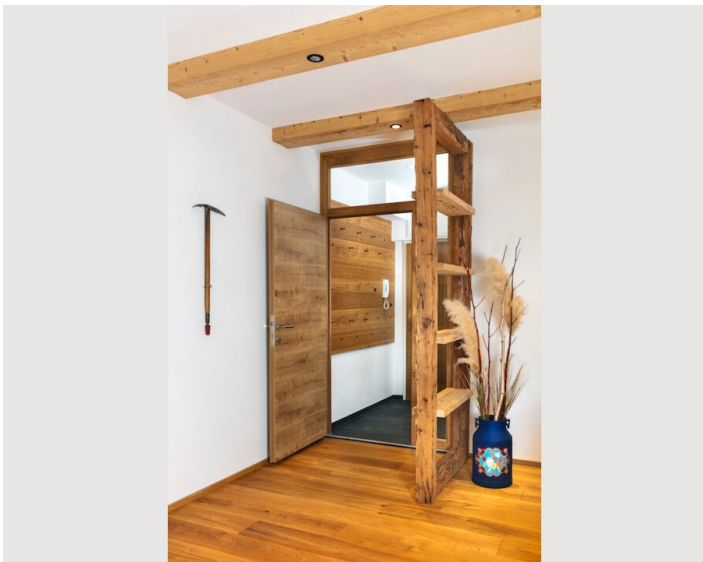
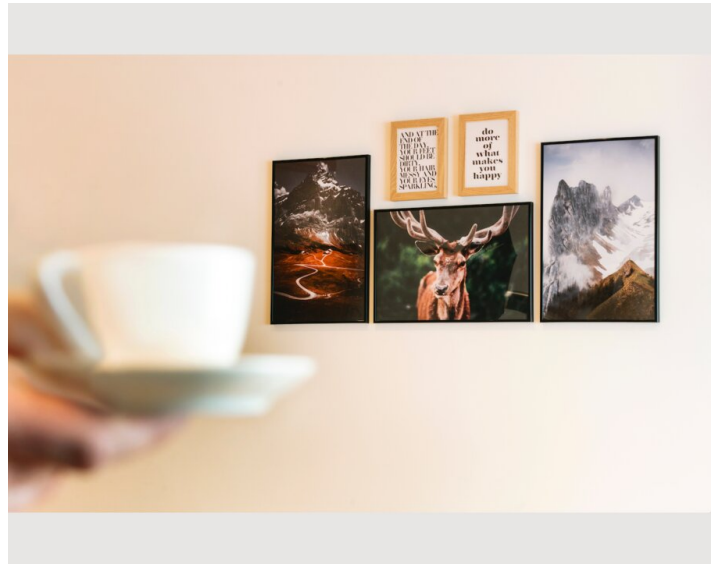
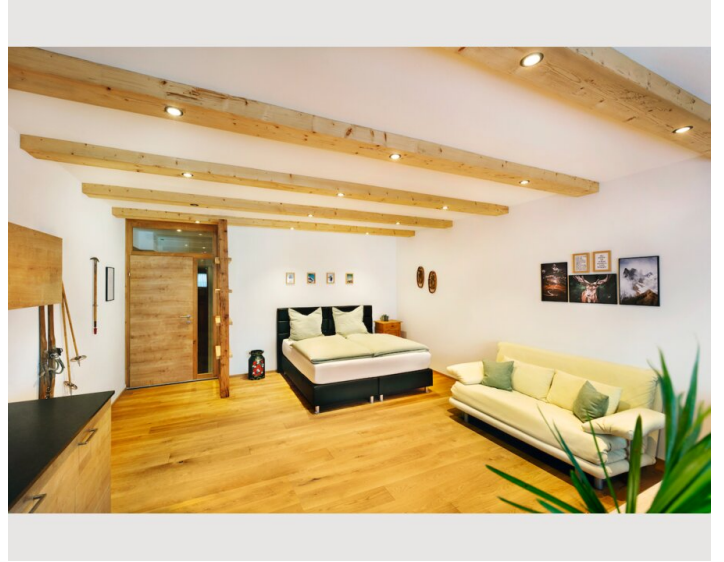
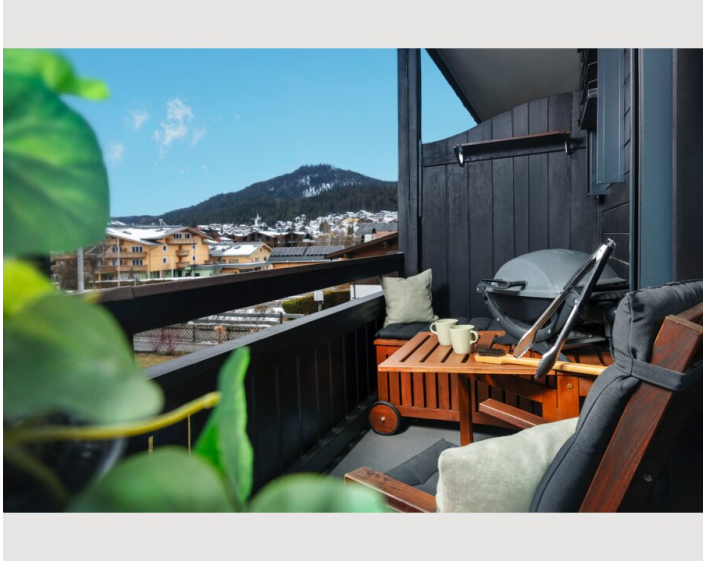
Kitchen

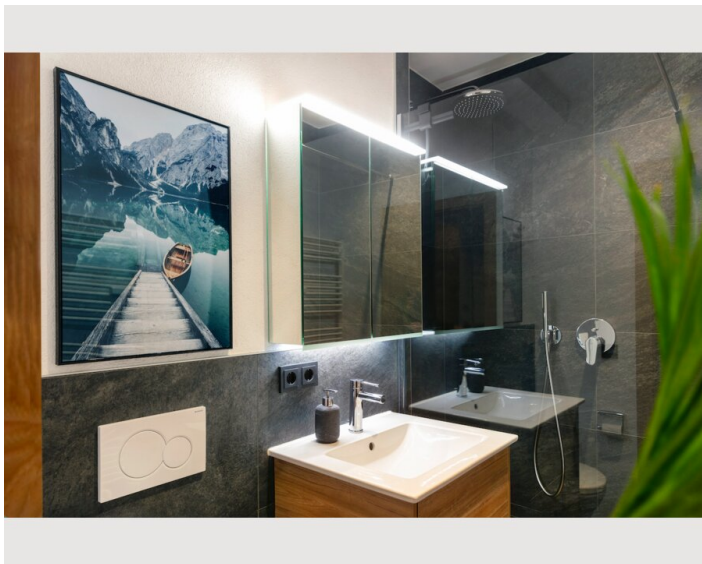
- Private kitchen
- Glasses/Tableware
- Dishwasher
- Cooking utensils
- Filter coffee
- Microwave

Informations

- Suitable for children
- Pets forbidden
- Bicycle room free of charge
- Smoking not allowed
- Regular cleaning at extra cost

Picture gallery





Infrastructure

 2min walking distance

 5min walking distance

 3min walking distance

The apartment is only a 5-minute walk from the center of Seefeld (numerous restaurants, sports/specialty shops, several supermarkets) and yet very quiet in a side street away from the hustle and bustle.

Within only 2 Minutes walking distance there's the train station of Seefeld with train connections as follows:

- to Innsbruck: 30Min intervall during main times, 60Min intervall after 9 p.m., at the weekend connections until 2 a.m.
- Innsbruck to Seefeld: 30Min intervall during main times, 60Min intervall after 9 p.m., at the weekend connections until 3 a.m.
- to GAP-MUC: 30Min intervall during main times, 60Min intervall non-peak hours, at the weekend connections until 3 a.m.

Location

