



ROOM, 1040 VIENNA

# Walk to Centr. Station, Belvedere & Metro

Object number: 01 schellein

[View and rent online](#)

Period	02/02/ - 02/03/2026
Number of persons	2
Total incl. VAT.	€ 2.950,28
Security deposit	€ 2.400,00

1 min from Central Station, Metro & Belvedere Palace. Stylish apartment with park views in Vienna's 4th district. King-size bed, full kitchen, bathtub, washer & dryer, elevator, Smart TV & ultra-fast 500 Mbit WiFi.

<b>Living space</b> 45m²	<b>3. floor</b>
<b>Maximum occupancy</b> 4 Persons	<b>Check-in</b> 15:00 - 00:00 Clock
<b>Complete accommodation</b> <sup>?</sup> 1 Private bathroom 1 Separated bedroom 1 Living-Sleepingroom	<b>Check-out</b> 00:00 - 11:00 Clock

## Sleeping options

### Sleeping room



1x Double bed (1,60 m x 2 m)

### Living & Sleeping



1x Sofa bed (1 person)

## Descripton of accommodation

1 min from Central Station, Belvedere Palace and Metro

### Location

- ◆ Belvedere Palace & Botanical Gardens
- ◆ City Center 5 min
- ◆ Metro & Central Station 1 min
- ◆ Direct Airport Access
- ◆ All (inter-)national train connections

### Apartment

- ◆ King-size Bed
- ◆ Full Kitchen with dish washer, stove, oven, microwave, Nespresso- & Coffee machine, & much more
- ◆ Large bathroom & bathtub
- ◆ 3rd floor + elevator
- ◆ windows face green park, south-west\*
- ◆ Smart TV - Netflix, Amazon, Disney
- ◆ Washer & Dryer

◆BEST WIFI, 500mbit

The space

Available for stays longer than 1 month only.

Welcome to your stylish home at Schelleingasse, located in the vibrant and historical district of Wieden in Vienna. This beautifully furnished one-bedroom apartment offers a perfect blend of comfort and convenience, making it an ideal choice for tenants planning extended stays from one month to three years. Enjoy modern living in a prime location that provides easy access to all the best that Vienna has to offer.

One of the major benefits of our location is its exceptional connectivity. Just a short walk from the Hauptbahnhof central station, you'll find that all of Vienna's iconic attractions and key destinations are within easy reach. The nearby Metro Line 1 (U1) ensures quick and easy access to the city center, where you can explore the magnificent St. Stephen's Cathedral, the bustling Kärntner Straße, and the historic Hofburg Palace. Additionally, the proximity to the Wien Mitte transport hub provides direct connections to the airport, making travel both convenient and efficient.

Wieden is a dynamic and culturally rich neighborhood, known for its blend of historic charm and modern amenities. The stunning Belvedere Palace, with its beautiful gardens and world-class art collections, is just a short stroll away, offering a perfect spot for leisurely walks and cultural enrichment. The area is also home to an array of delightful cafes, restaurants, and shops, providing a vibrant local scene for dining and shopping. Whether you're enjoying a coffee at a nearby café or exploring the local boutiques, you'll find that everything you need is close at hand.

For those planning an extended stay, the location offers excellent educational and professional opportunities.

The apartment itself is designed to be a comfortable home. At Schelleingasse, you're not just finding a place to stay; you're discovering a home that combines comfort, and unparalleled convenience in one of Vienna's most desirable districts.

-----

Very safe, quiet & friendly area (4th district, Wieden)

Best public transportation in town (central station)

Street parking available

Paid parking in garage nearby available

HWB (kWh/m²/Jahr): 51,73

HWB Energieklasse: C

fGEE: 1,414

-----

We offer the option to register your residency at this address via a so-called "Meldezettel" at the local magistracy ("Wohnsitz", "Hauptwohnsitz").

-----

◆BEST WIFI SPEED - 500mbit!

most stable glass fibre connection by T-Mobile

## Equipment & Features



### Basic equipment

- Internet/Wifi
- Private washing machine
- Bedclothes
- Aircondition
- Iron & ironing board
- Hairdryer
- TV
- Private dryer
- Towels
- Vacuum cleaner
- Cleaning utensils



### First supply

- Toilet paper
- Soap
- shampoo
- Nespresso capsules



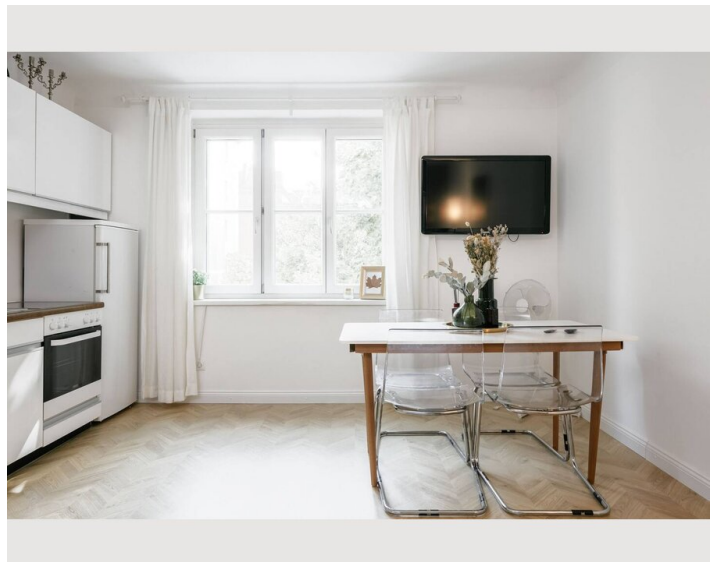
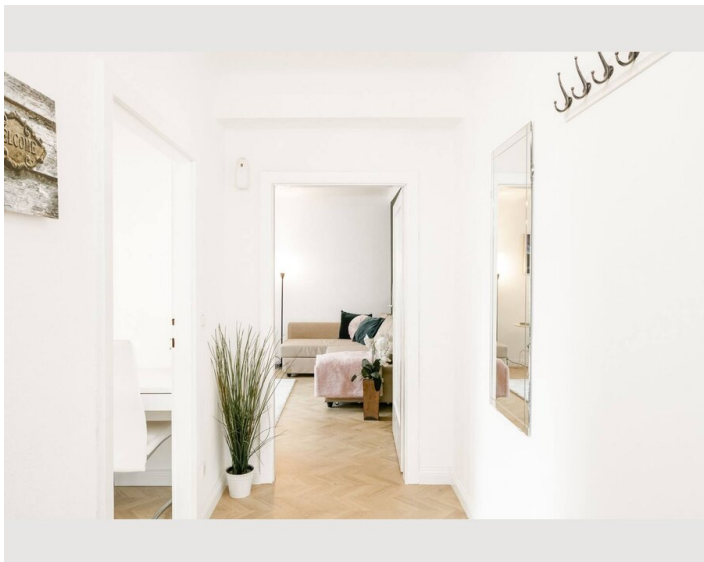
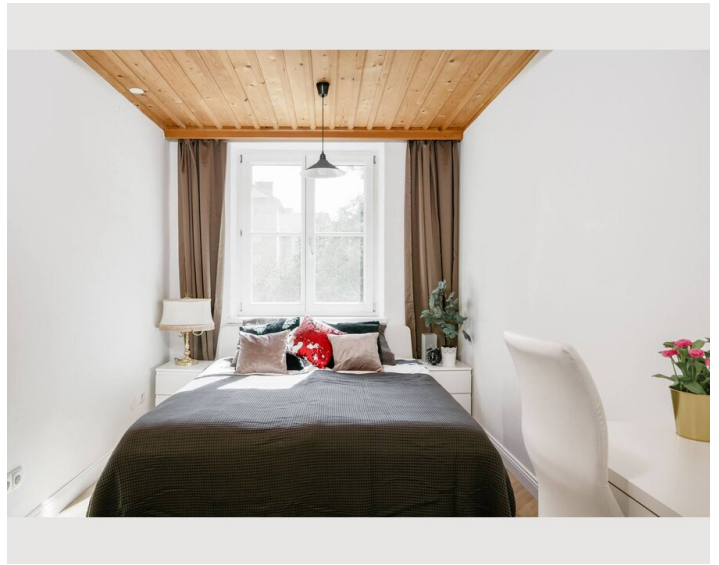
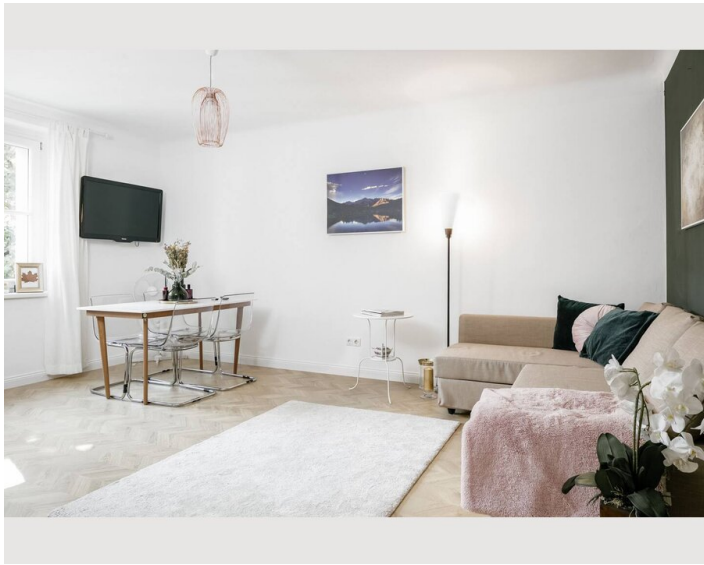
### Kitchen

- Private kitchen
- Coffee machine
- Microwave
- Cooking utensils
- Dishwasher

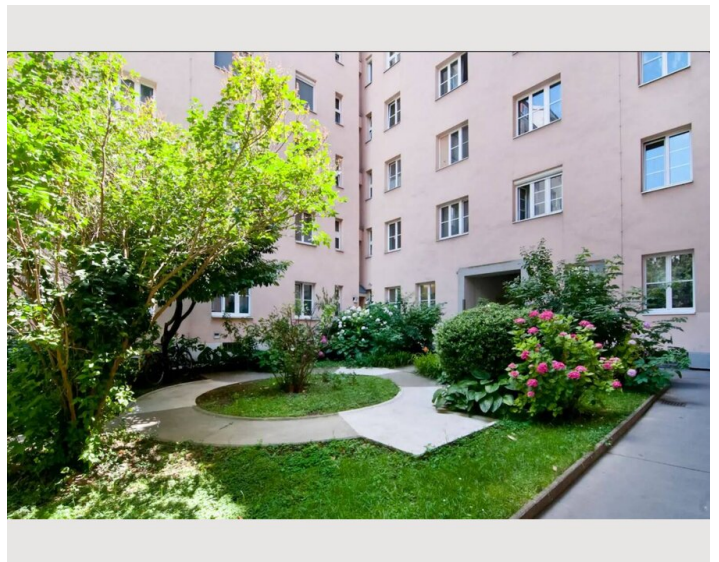
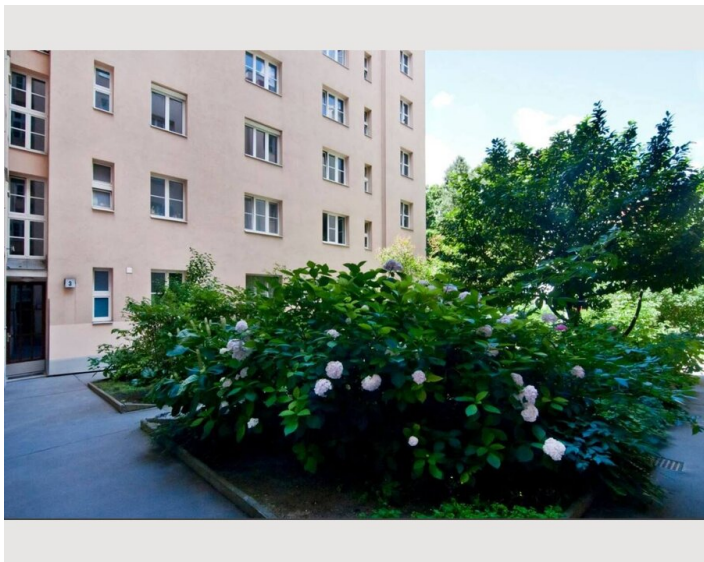
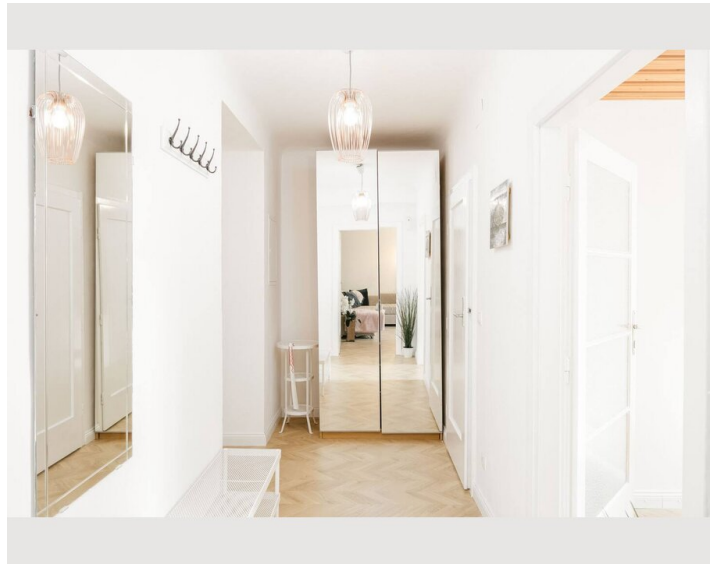
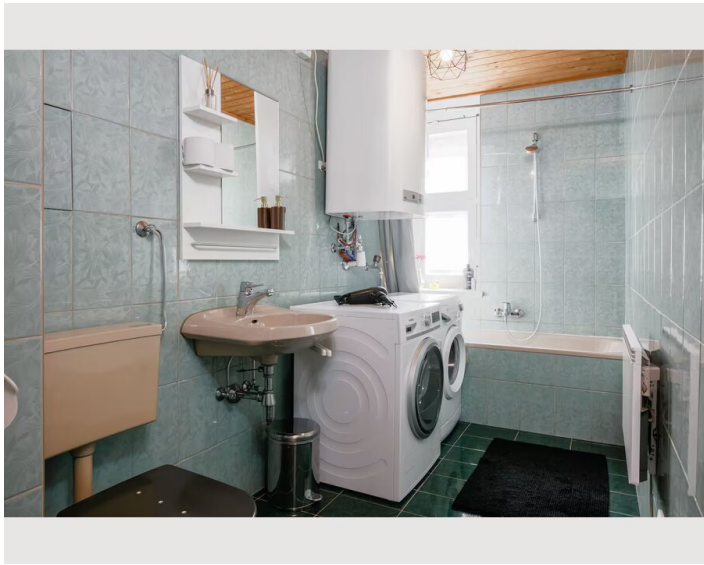
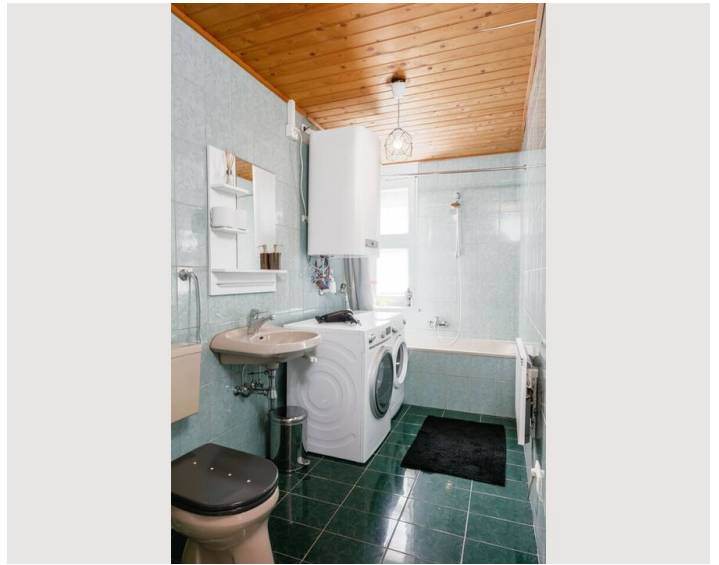
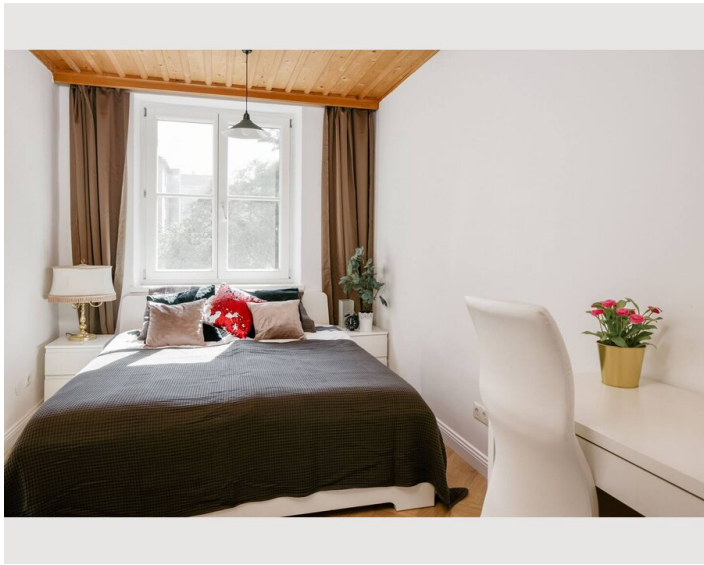
## Informations

- Smoking not allowed
- Private entrance
- Desk/Workplace
- Pets forbidden

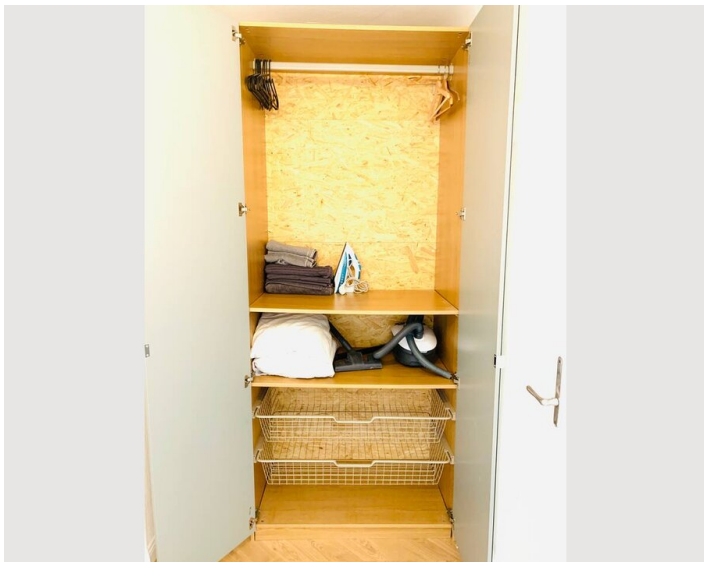
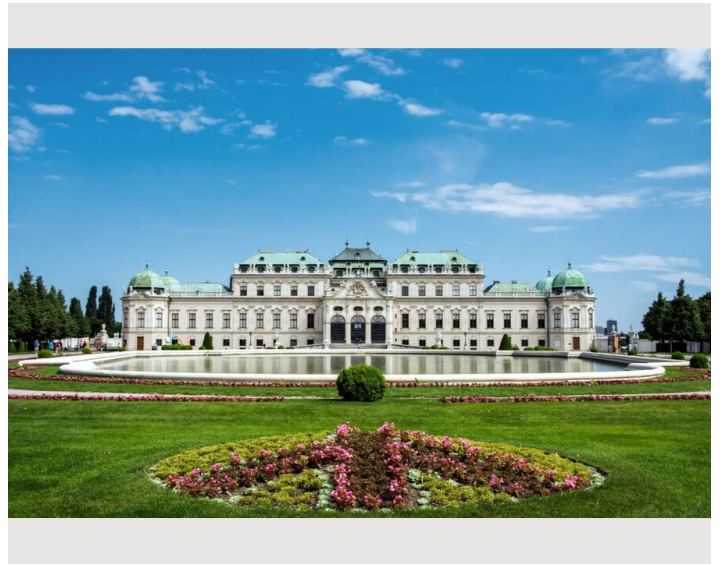
## Picture gallery













**Video**

[Goto Video](#)





## Location

