

4 ROOM APARTMENT AND MORE, 5325 PLAINFELD

## Exclusive penthouse with sunny panoramic terrace

Object number: PEHD1

[View and rent online](#)

<b>Period</b>	21/07/ - 21/08/2025
<b>Number of persons</b>	2
<b>Total incl. VAT.</b>	€ 4.322,60
<b>Security deposit</b>	€ 3.100,00

ARRIVE & FEEL GOOD! Luxury penthouse with 42 m2 sunny panorama terrace between the city of Salzburg and Lake Fuschl.



### Living space

160m<sup>2</sup>



### Maximum occupancy

4 Persons



### Complete accommodation <sup>?</sup>

1 private bathroom 2 Separated bedrooms



### 2. floor

Elevator available



### Check-in

15:00 - 20:00 Clock



### Check-out

10:00 - 14:00 Clock

## Sleeping options

### Bedroom 1



1x Double bed (1,80 m x 2 m)

### Bedroom 2



1x Double bed (1,80 m x 2 m)

## Descripton of accommodation

Between the city of Salzburg and the beautiful Fuschlsee - in the middle of the green - this 160m<sup>2</sup> top equipped penthouse with a sunny panorama terrace is waiting for you.

The apartment can be easily reached with the elevator, which leads directly from the underground car park to the 2nd floor. The spacious, light-flooded living-kitchen-dining area with an open fireplace makes your stay an experience. The new kitchen is fully equipped, dishwasher, side-by-side fridge-freezer and microwave are integrated. A 65 inch flat screen in the living room with a Bose sound system leaves nothing to be desired. The entire penthouse is fully air-conditioned. From here you can also reach the 42m<sup>2</sup> terrace with a view of the Gaisberg and Nockstein, where you can enjoy the sun from morning to evening.

2 bedrooms, one of them with a water bed, a large bathroom with bathtub and walk-in shower and a separate toilet are available. Bed linen and towels are sufficiently available and included. The working day can start relaxed in your own home office with meeting lounge.

A parking space is available in the underground car park. Another outdoor parking space can be used on request.

## Equipment & Features



### Basic equipment

- Balcony
  - Garden
  - Music system/docking station
  - Private washing machine
  - Bedclothes
  - Private toilet
  - Aircondition
  - Iron & ironing board
  - Hairdryer
  - Terrace
  - Internet/Wifi
  - TV
  - Private dryer
  - Towels
  - Garage
  - Vacuum cleaner
  - Cleaning utensils
- 



### Fireplace

- Tiled stove
- 



### First supply

- Toilet paper
  - Soap
  - shampoo
- 



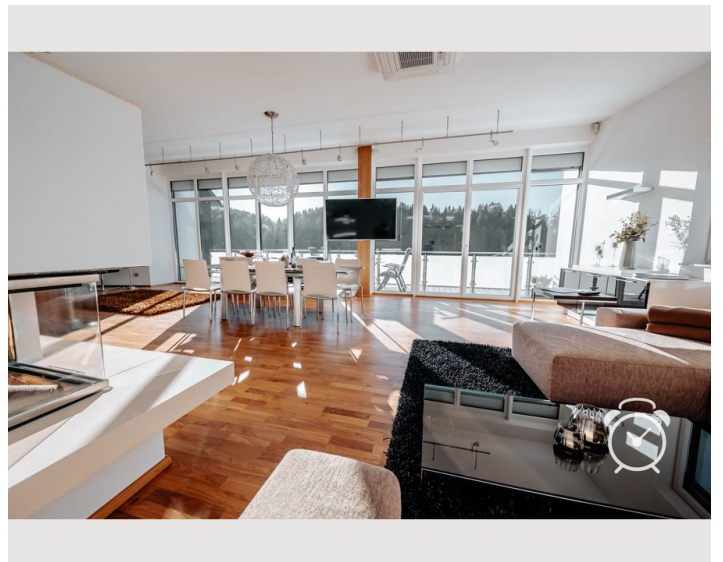
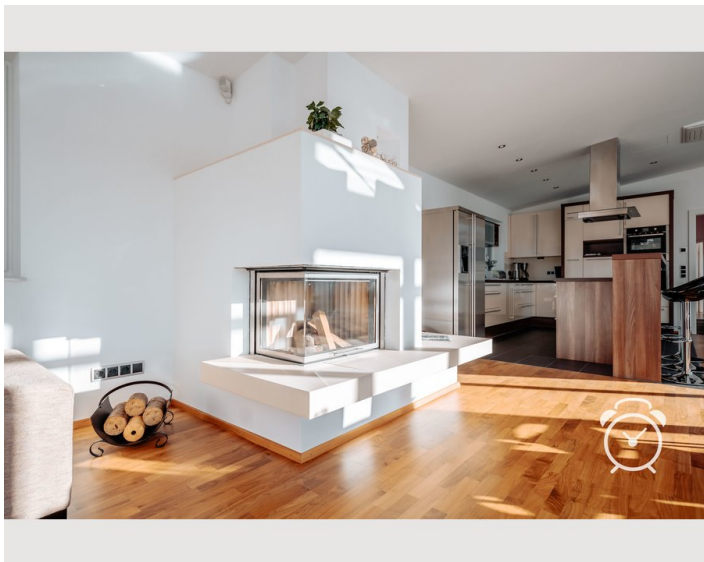
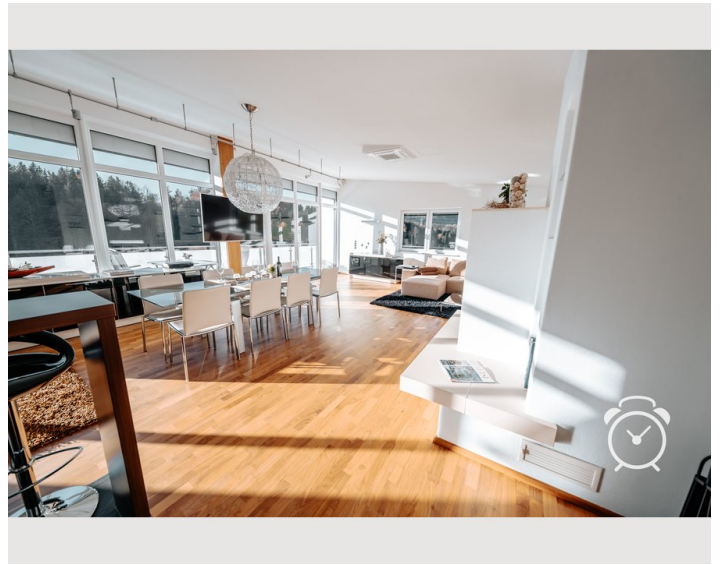
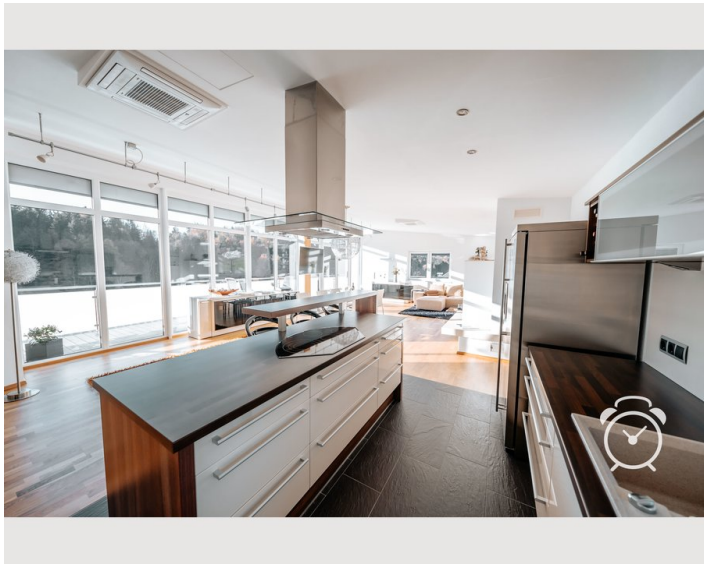
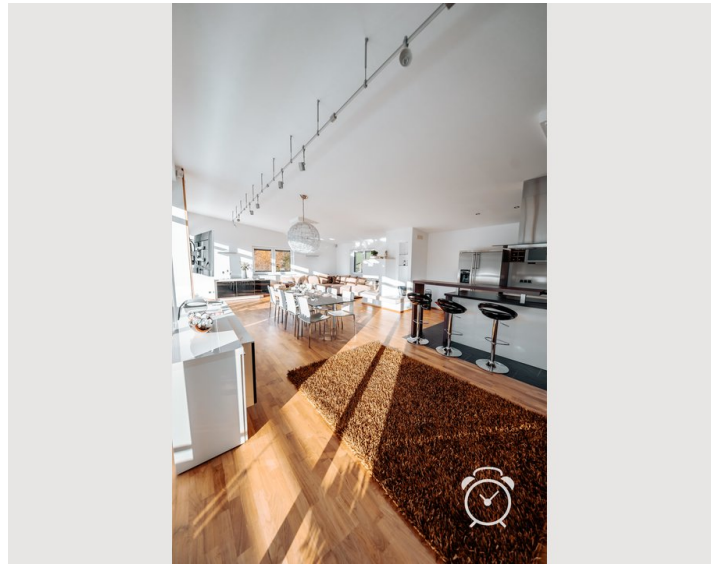
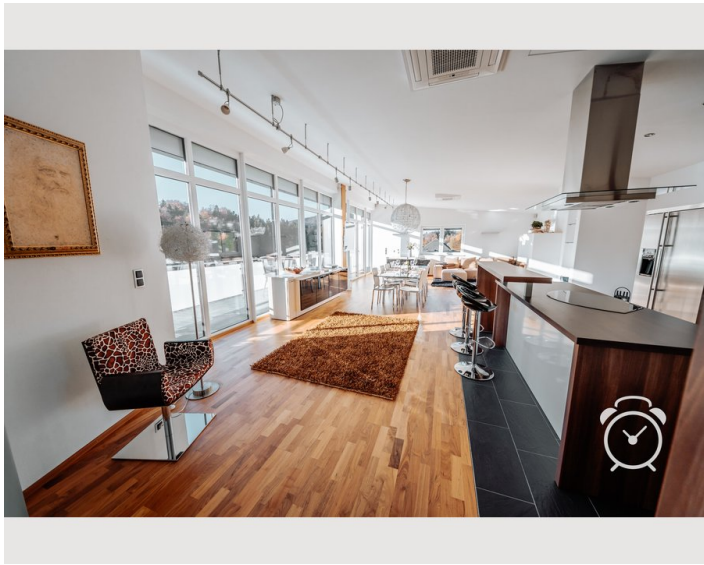
### Kitchen

- Private kitchen
- Glasses/Tableware
- Dishwasher
- Cooking utensils
- Coffee machine
- Microwave

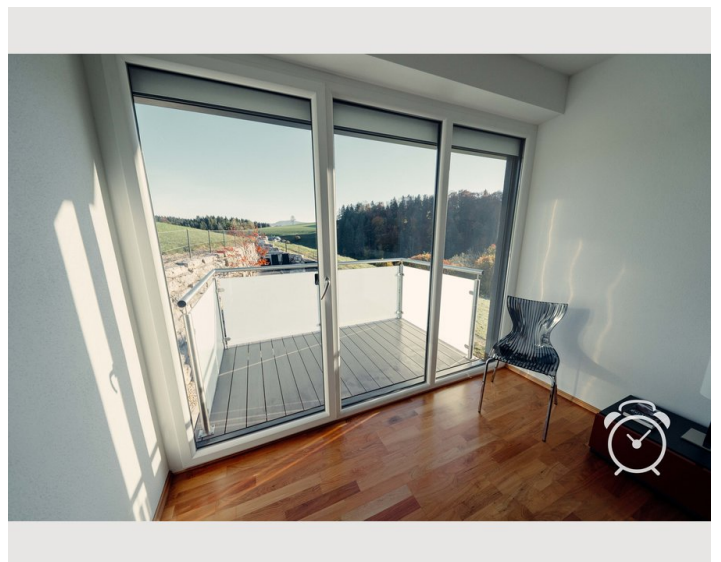
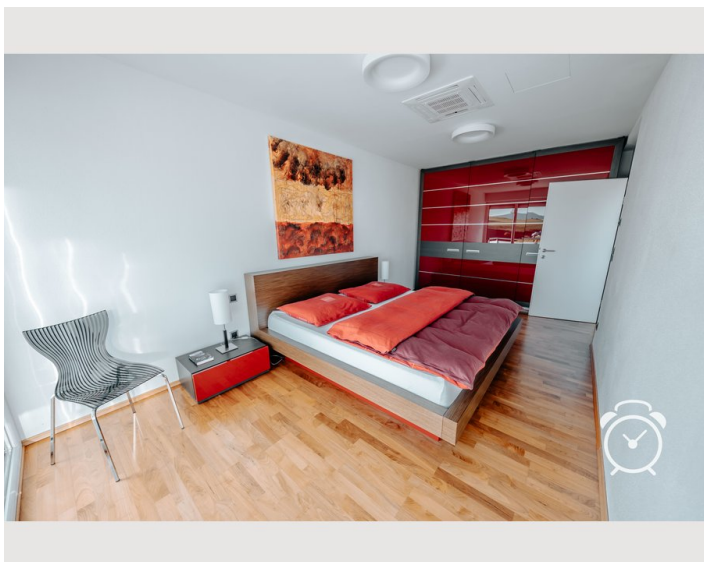
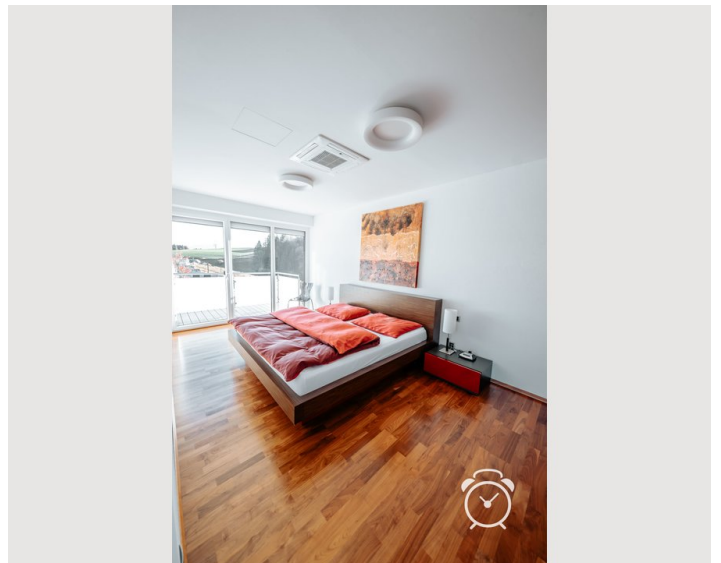
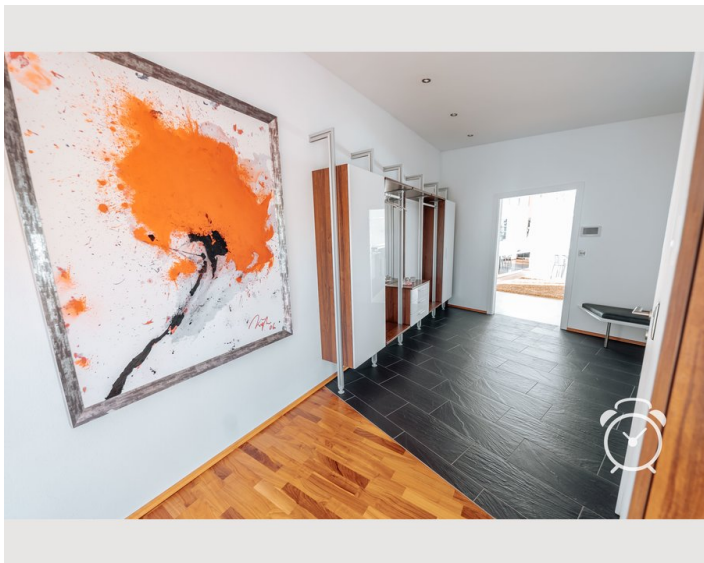
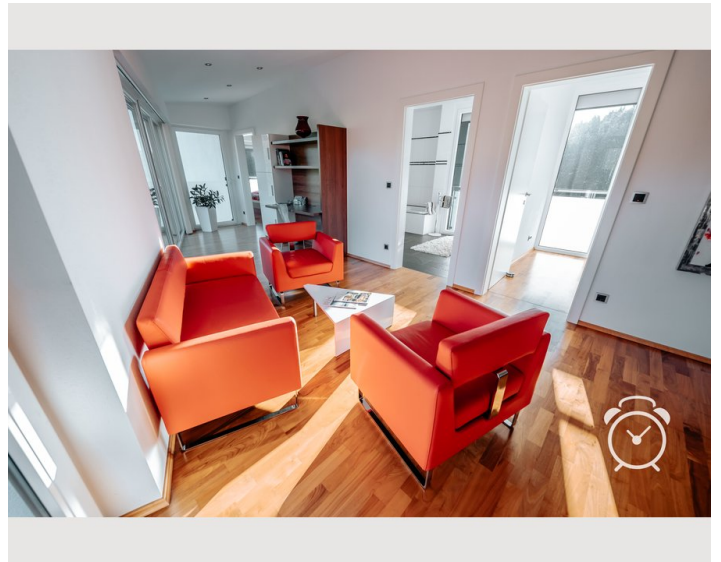
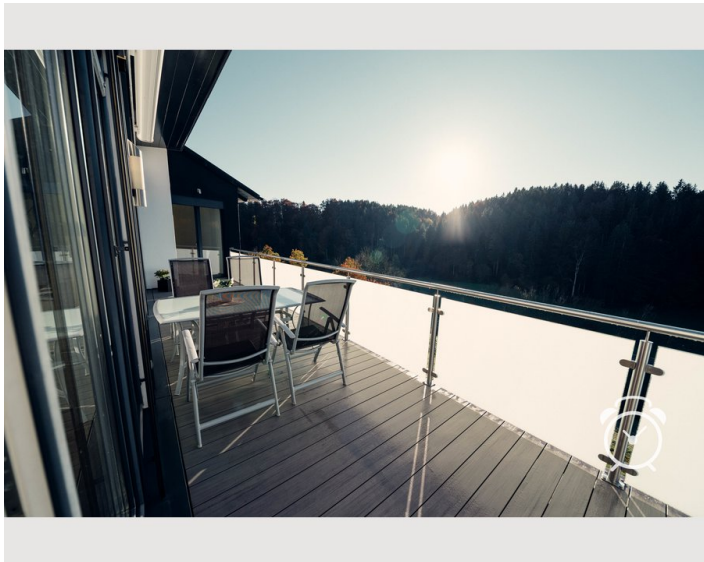
## Informations

- Smoking not allowed
- Private entrance
- Bicycle room free of charge
- Desk/Workplace
- Pets forbidden

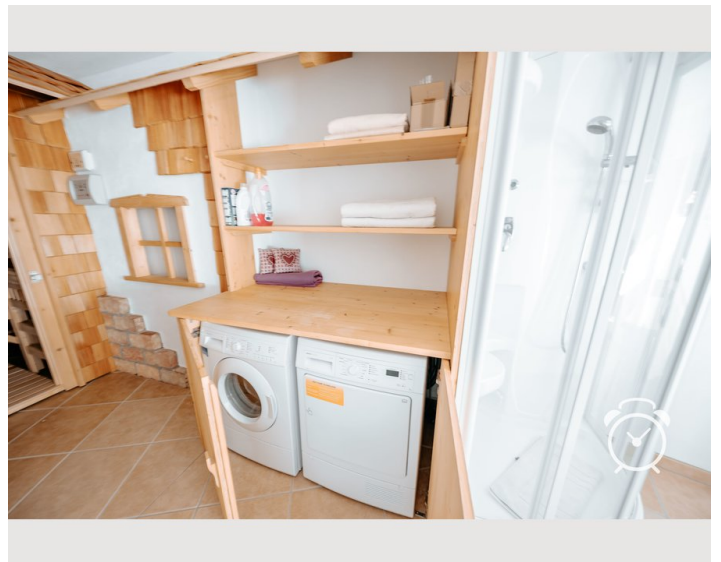
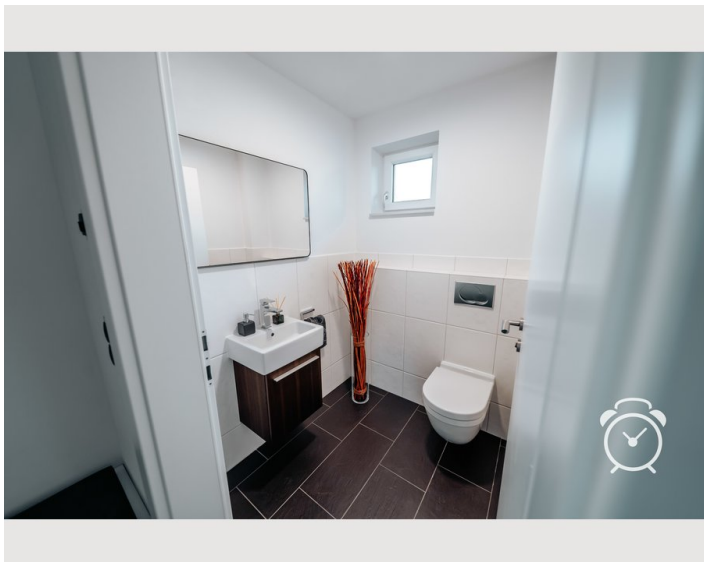
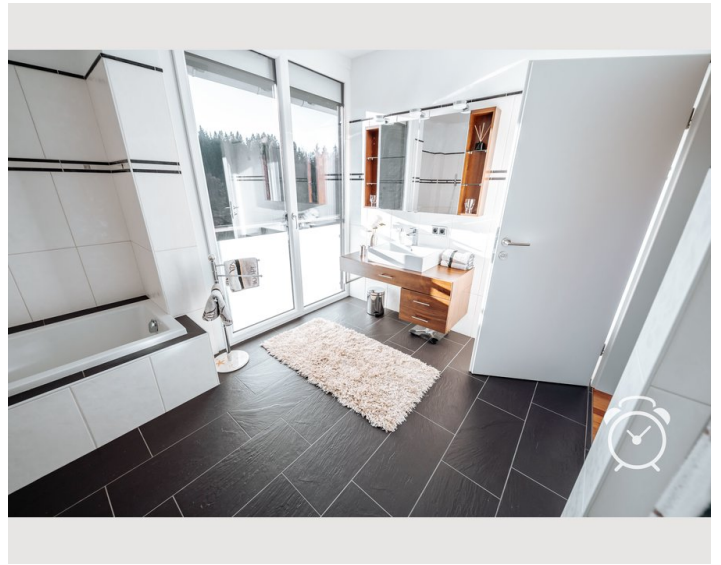
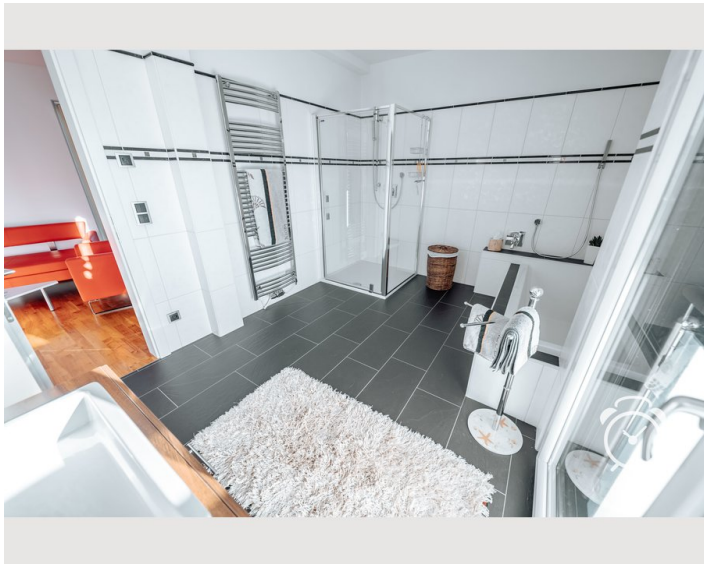
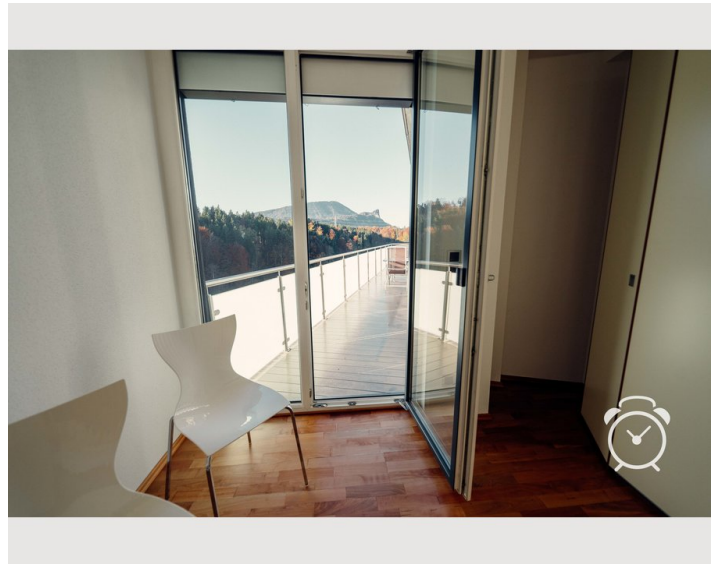
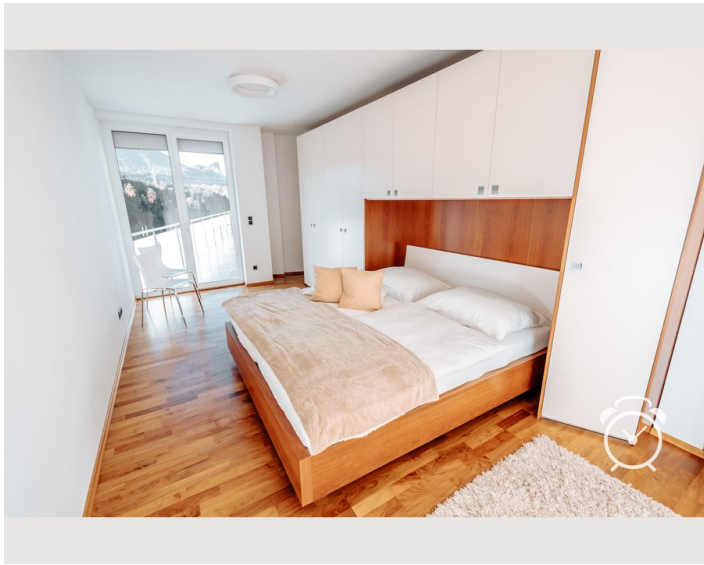
## Picture gallery

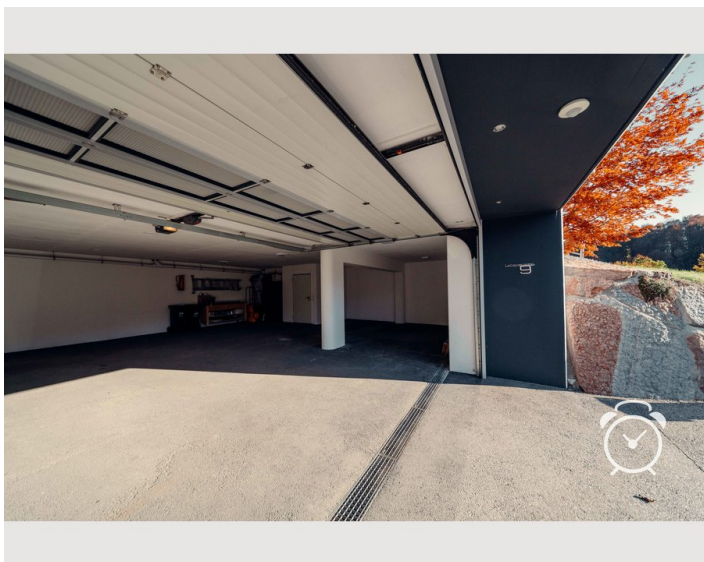
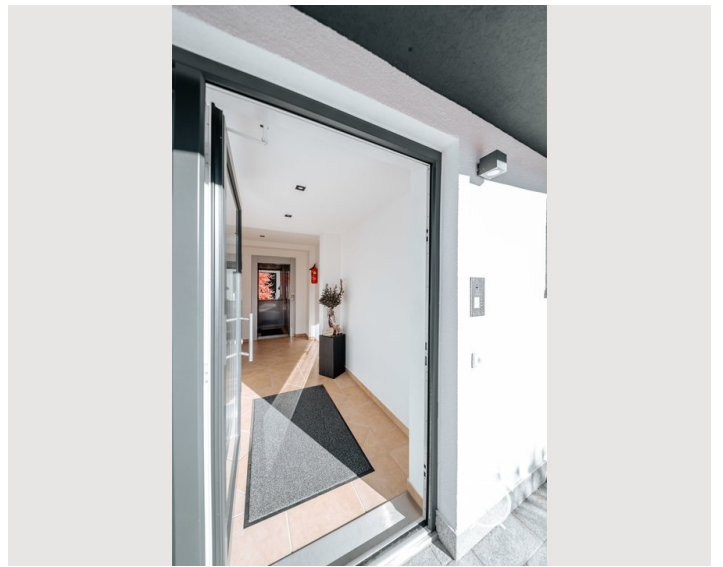
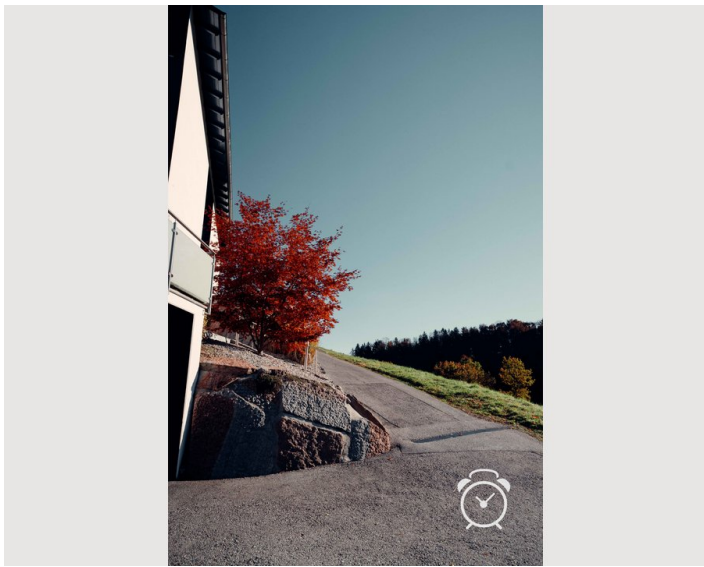
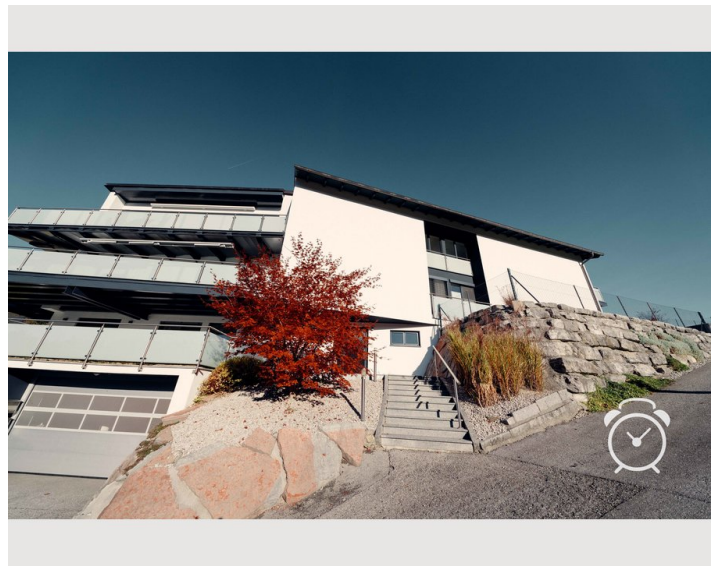
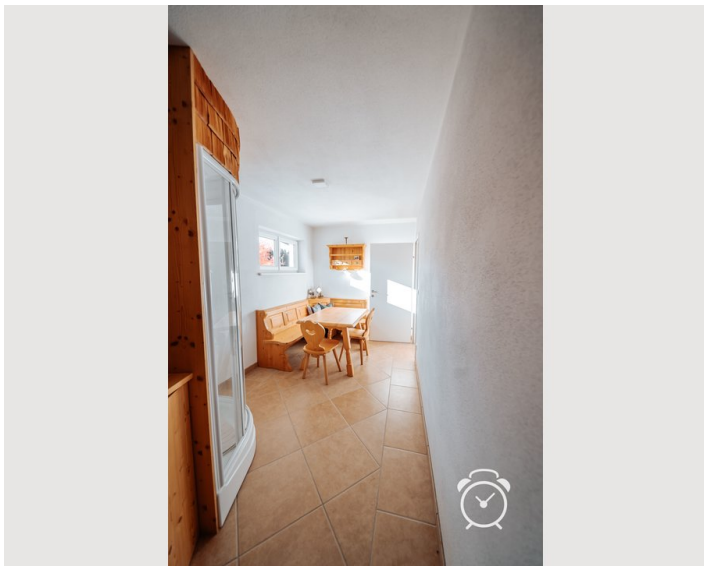








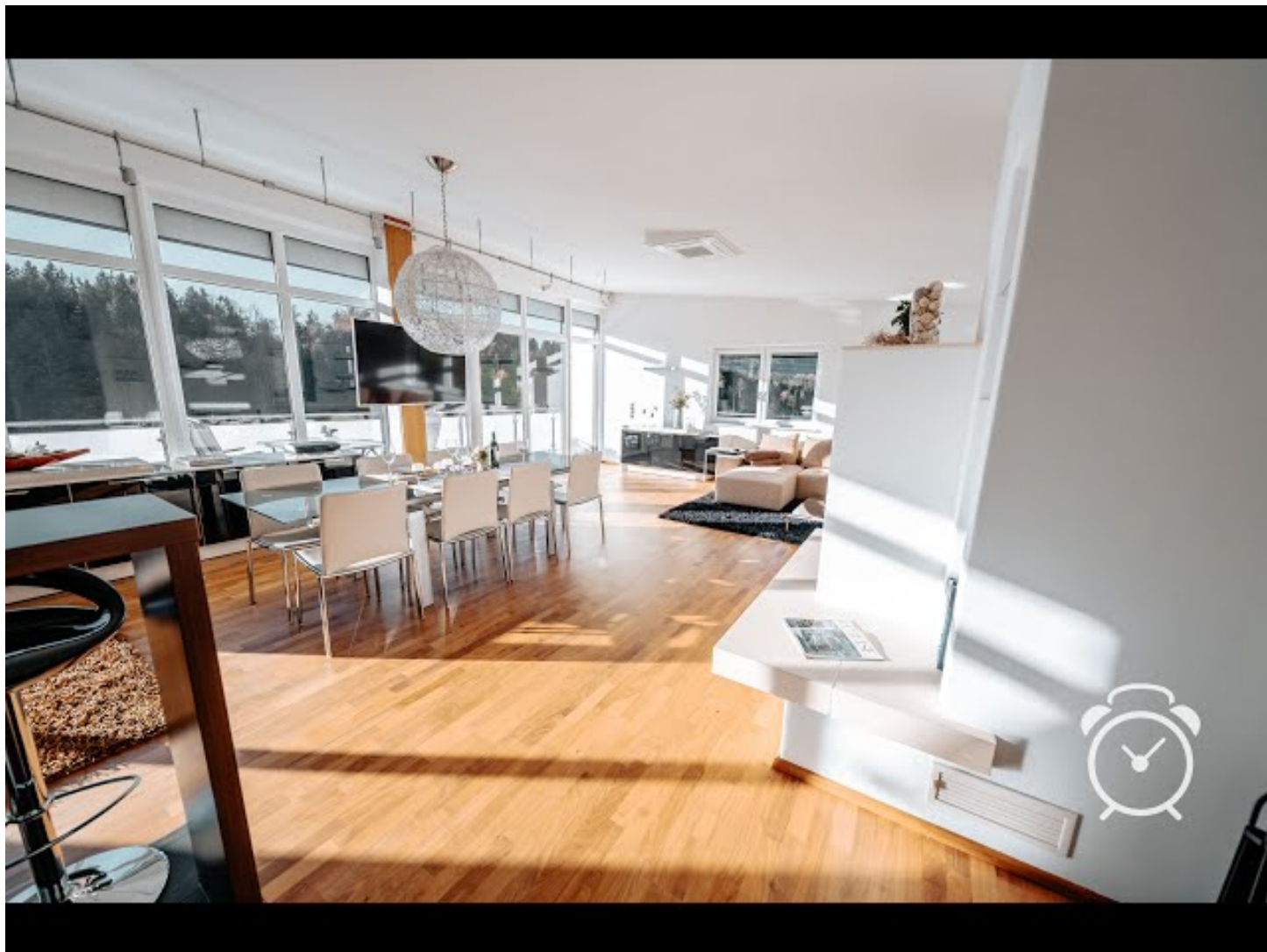






## Video

Goto Video



### Infrastructure



The next bus stop is 400 m away on foot. The transport links to the city are very good. In the neighboring village about 2.5 km away there is a bakery and a small grocery store. The next larger supermarket can be reached within a few minutes by car, as well as a pharmacy and a medical center.



## Location

