



2 ROOM APARTMENT, 1010 VIENNA

***Unique property in the heart of Vienna* fully furnished city apartment near St. Stephen's Cathedral!**

Object number: UAUA1

[View and rent online](#)

In the heart of Vienna, just a short walk from St. Stephen's Cathedral, you'll find a spacious 65 m² "city maisonette"!

Period	05/07/ - 05/08/2026
Number of persons	2
Total incl. VAT.	€ 2.984,52
Security deposit	€ 2.000,00



Living space

65m²



Maximum occupancy

3 Persons



Complete accommodation [?]

1 Private bathroom 1 Separated bedroom



Ground floor



Check-in

11:00 - 21:00 Clock



Check-out

09:00 - 18:00 Clock

Sleeping options

Sleeping room



1x Double bed (1,80 m x 2 m)

Description of accommodation

The apartment is located in the courtyard (ground floor) of a beautiful, listed turn-of-the-century building and features the following layout:

The lower level comprises a spacious entrance hall, a bathroom with a modern, walk-in shower, sink, toilet, and washing machine, as well as a bedroom with a walk-in closet.

The upper level is accessed via a charming wrought-iron spiral staircase, leading to the living/dining area with a kitchen. The vaulted ceiling lends the room a pleasant, historic atmosphere.

Equipment & Features



Basic equipment

- Internet/Wifi
- Private washing machine
- Towels
- Vacuum cleaner
- Hairdryer
- TV
- Bedclothes
- Private toilet
- Iron & ironing board



First supply

- Toilet paper
- Nespresso capsules



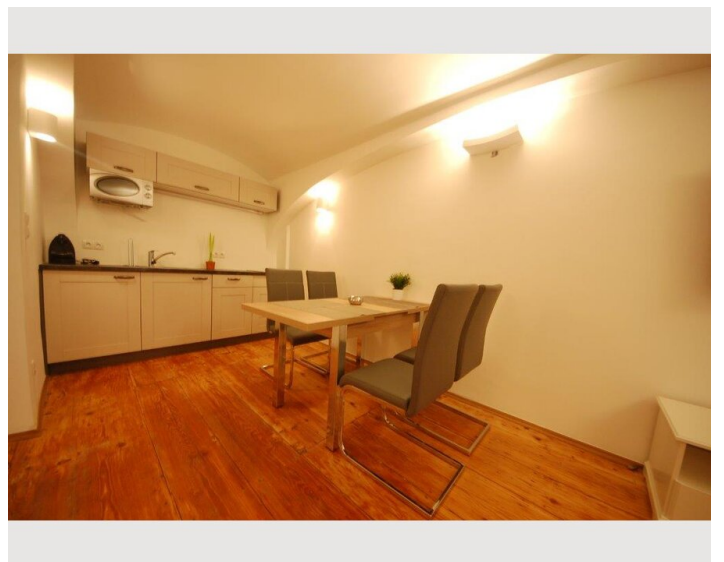
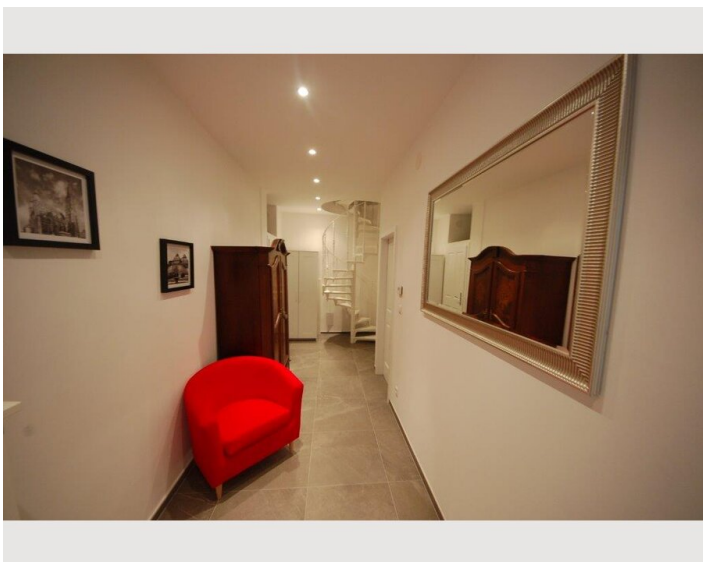
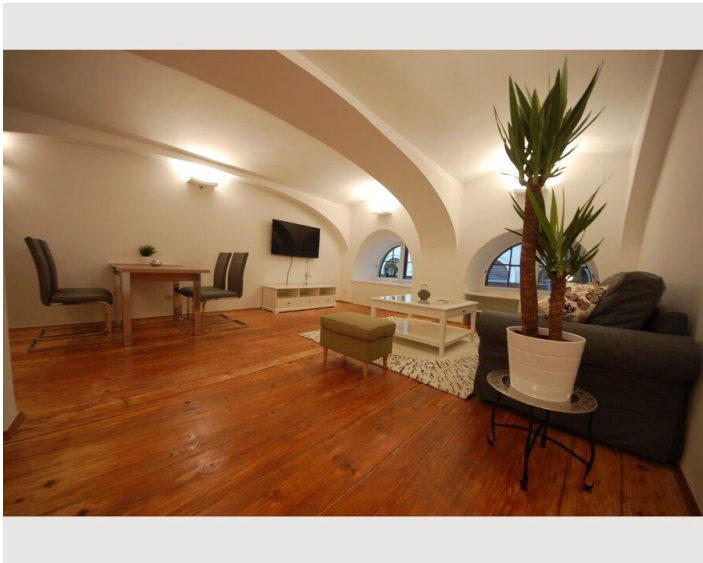
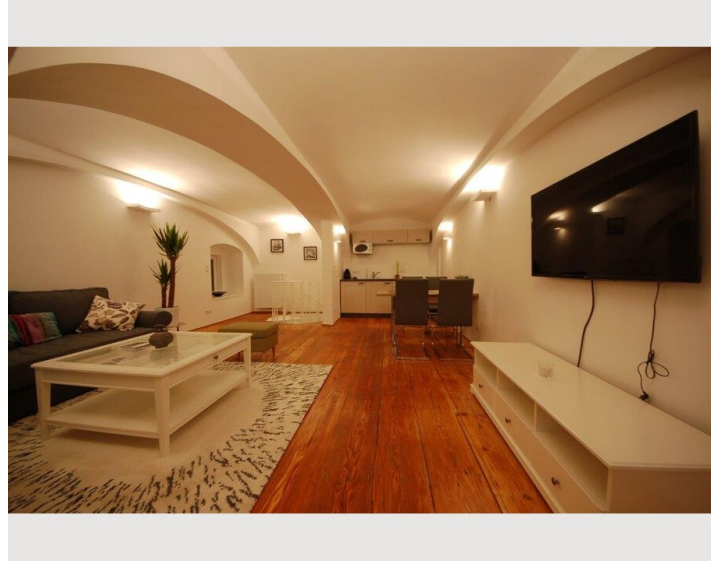
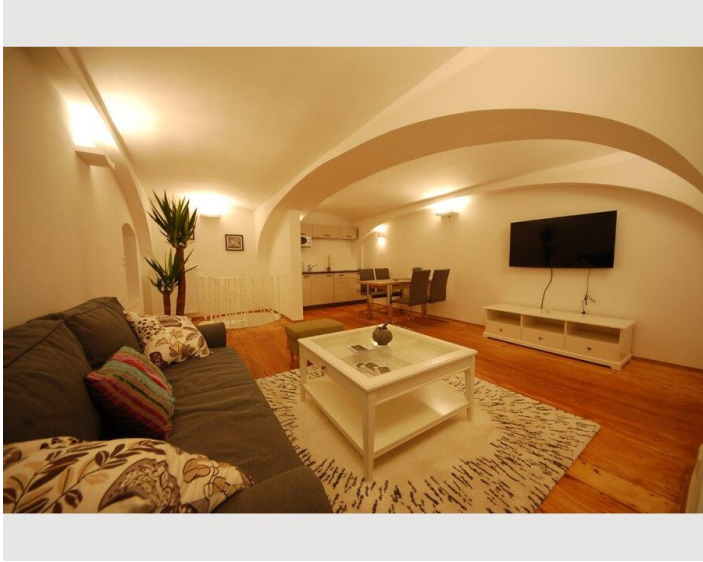
Kitchen

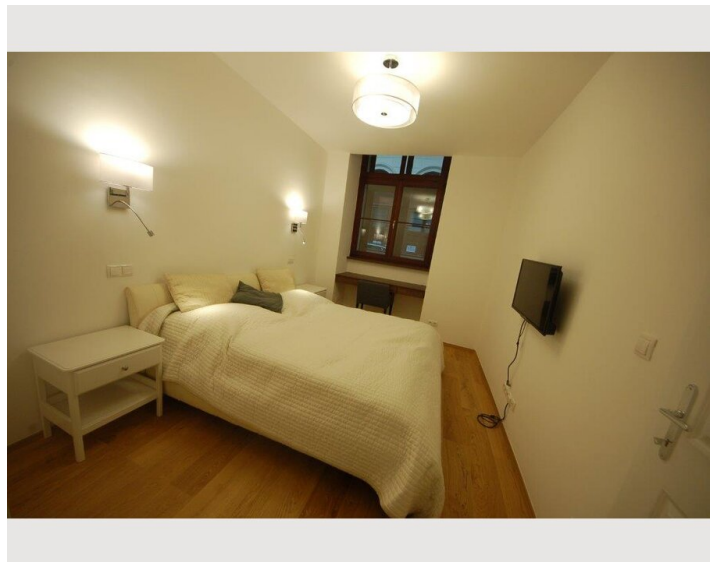
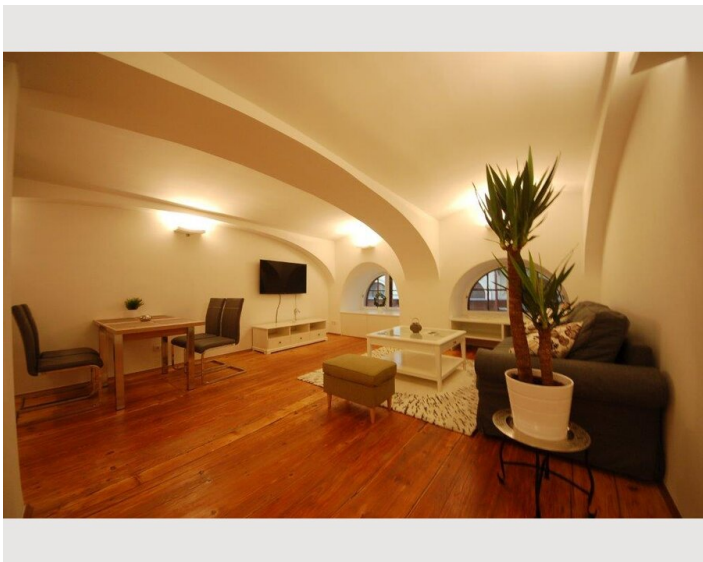
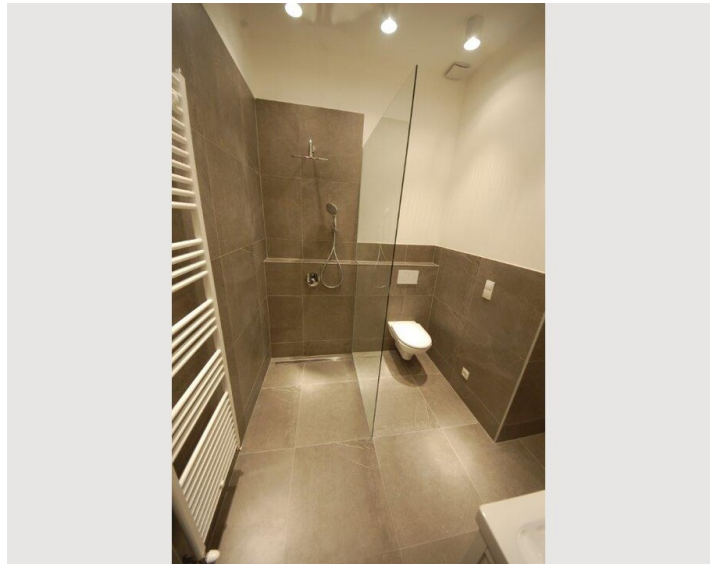
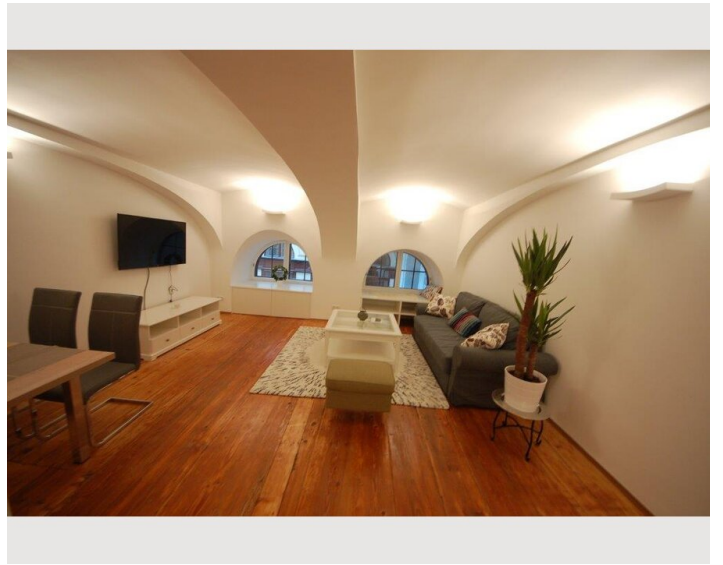
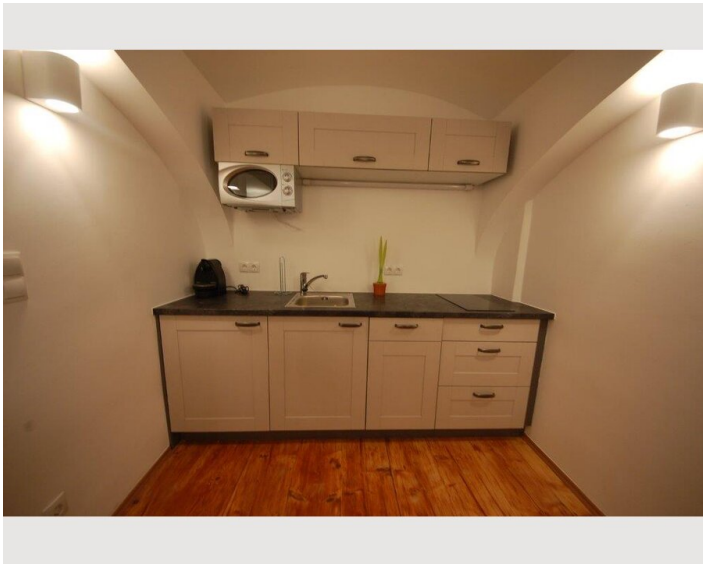
- Private kitchen
- Espresso machine
- Microwave
- Glasses/Tableware
- Dishwasher

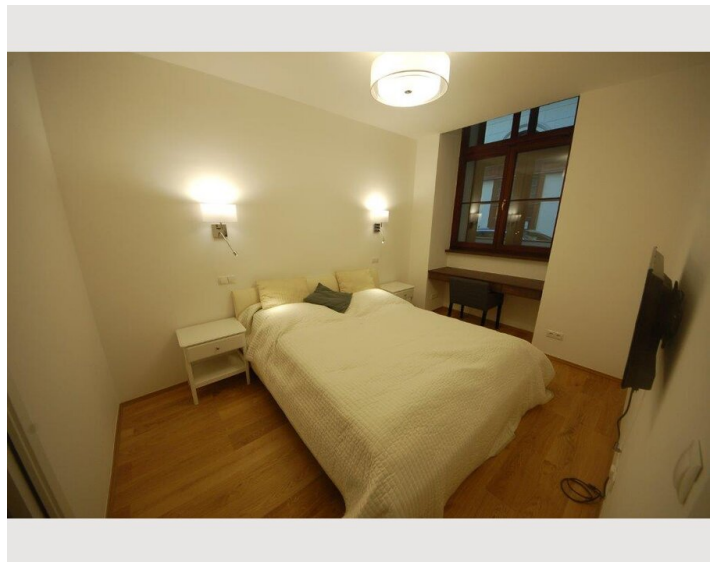
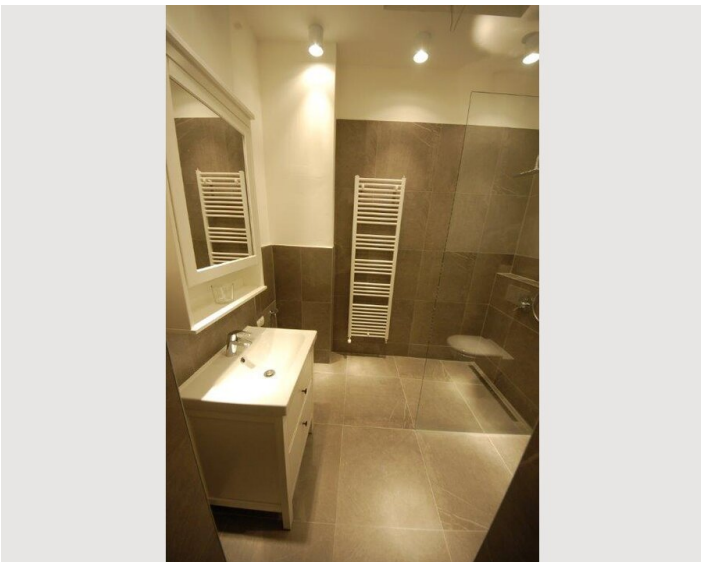
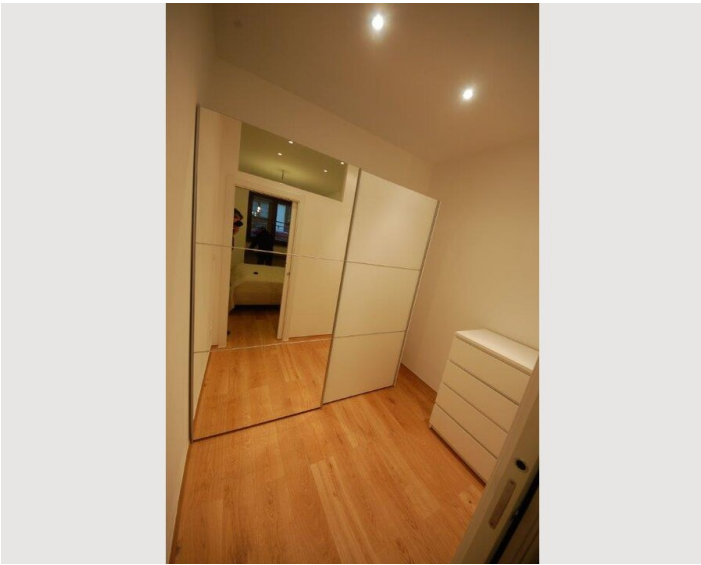
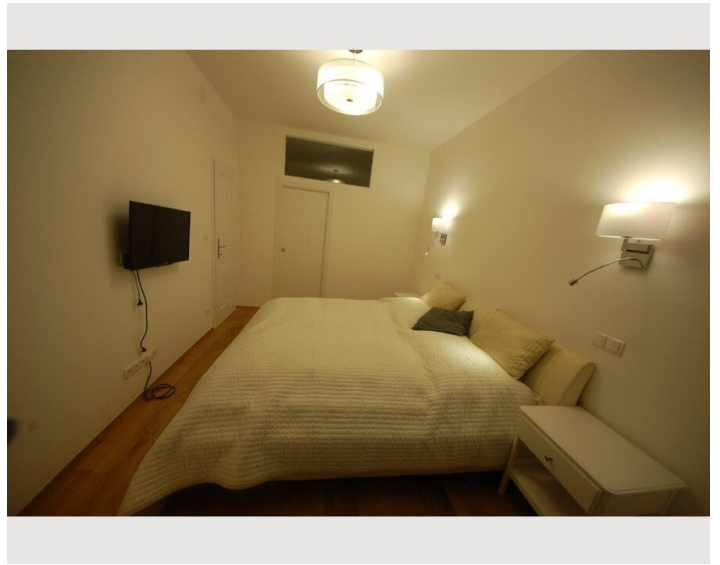
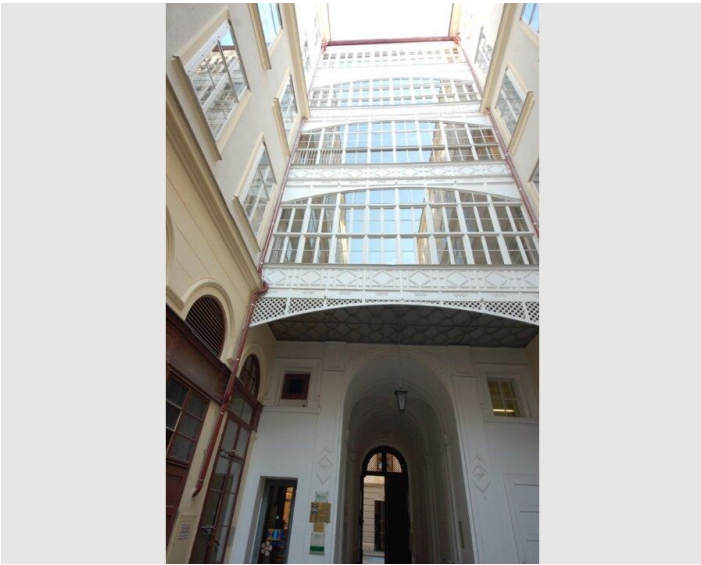
Informations

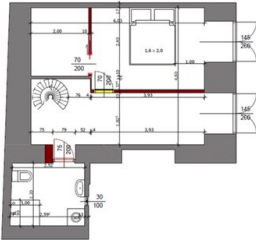
- Suitable for children
- Desk/Workplace
- Pets forbidden
- Smoking not allowed
- Private entrance
- Bicycle room free of charge

Picture gallery

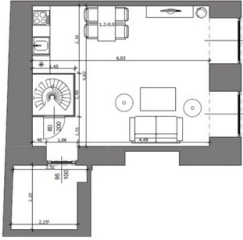






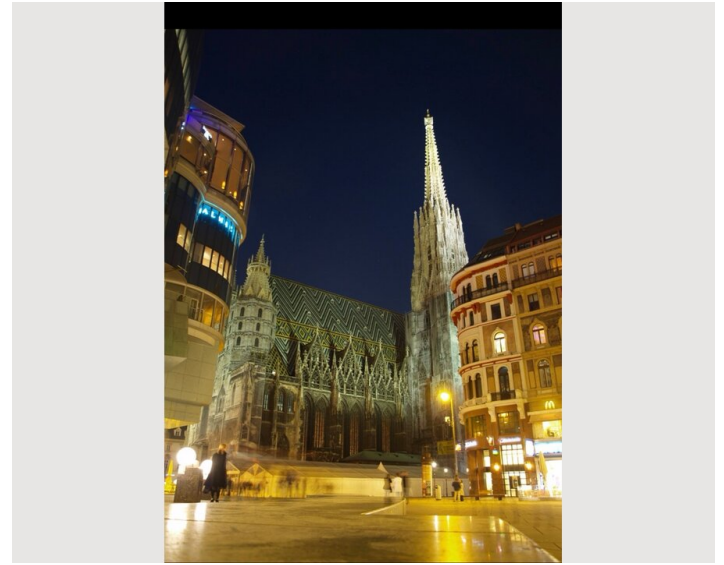


untere Wohnebene



obere Wohnebene

-
-
-
-



Location

