



2 ZIMMER WOHNUNG, 5020 SALZBURG

2-room Apartment next to the NAWI (University) for shortterm rent

Object number: GAMM2

[View and rent online](#)

Great located fully furnished apartment next to the NAWI (University)!
Your new temporary homebase!

Period	30/05/ - 30/06/2025
Number of persons	2
Total incl. VAT.	€ 1.726,90
Security deposit	€ 1.300,00



Living space

60m²



Maximum occupancy

2 Persons



Complete accommodation [?]

1 private bathroom 1 Separated bedroom 1 Living-Sleepingroom



4. floor

Elevator available



Check-in

14:00 - 20:00 Clock



Check-out

09:00 - 11:30 Clock

Sleeping options

Sleeping room



1x Double bed (1,80 m x 2 m)

Living and sleeping



1x Sofa bed (1 person)

Descripton of accommodation

The flat was completely renovated in 2012 and comprises a large living room with dining area and balcony, separate kitchen with hatch, bathroom (shower), extra WC (both newly tiled and with new sanitary fittings), bedroom and spacious anteroom. The orientation of the sunny flat is east/south/west, on the 4th floor. Fully equipped incl. broadband internet and cable TV.

Equipment features



Basic equipment

- Balcony
- TV
- Community washing machine
- Bedclothes
- Private toilet
- Vacuum cleaner
- Cleaning utensils
- Internet/Wifi
- Private washing machine
- Community dryer
- Towels
- Private parking space
- Iron & ironing board
- Hairdryer



Kitchen

- Private kitchen
- Espresso machine
- Glasses/Tableware
- Microwave

Informations

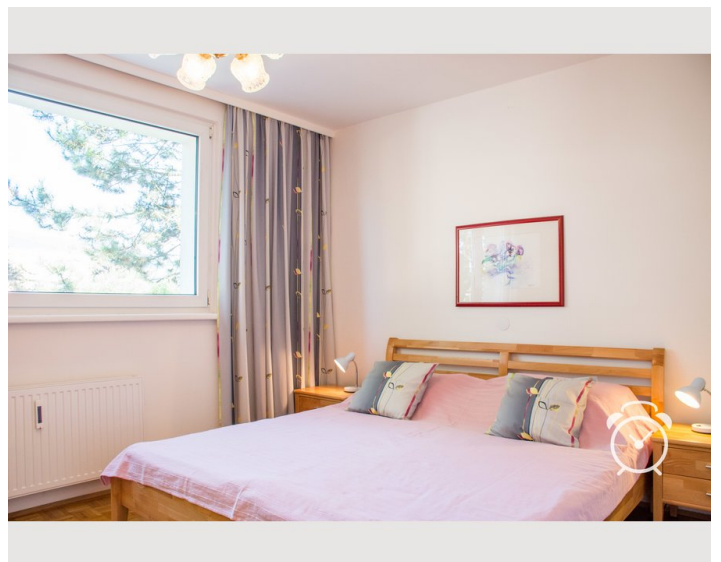
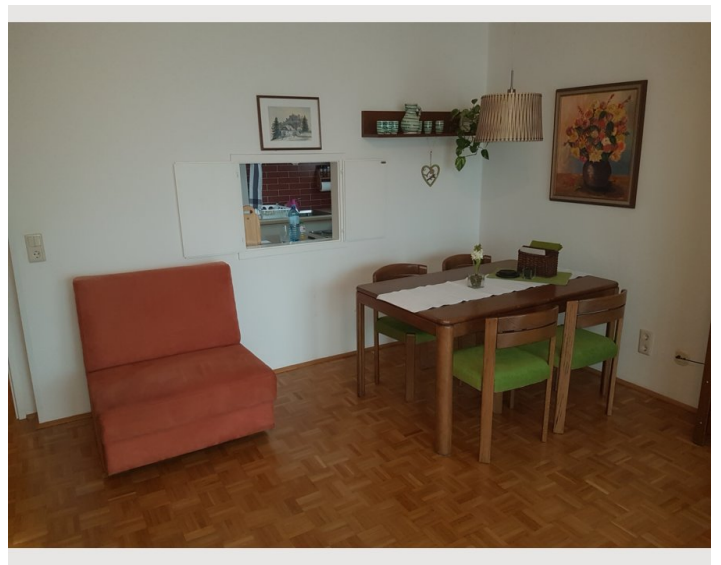
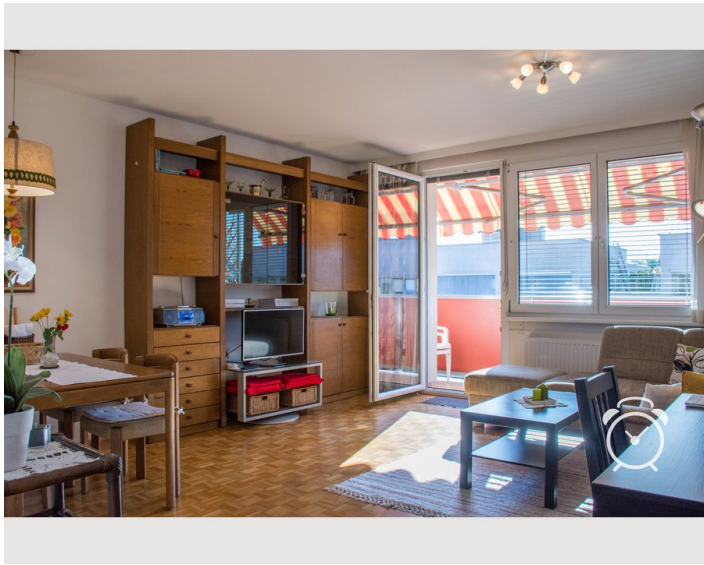
- Not suitable for children
- Free short-term parking zone
- Bicycle room free of charge
- Smoking not allowed
- Pets forbidden

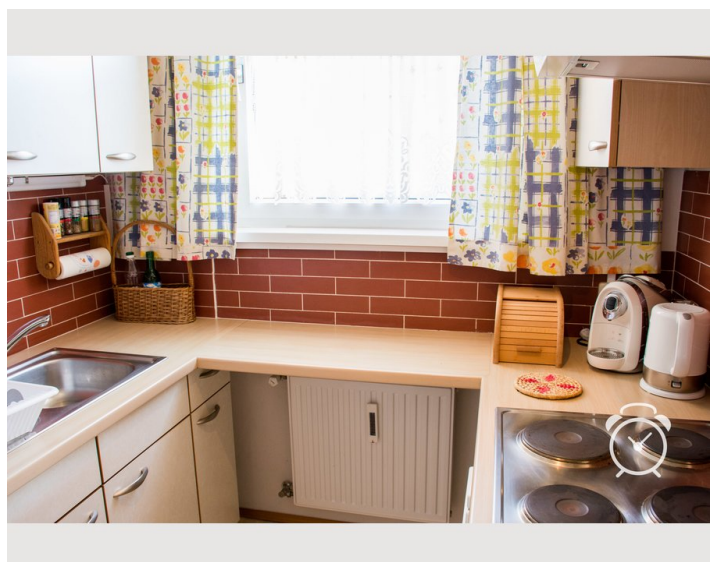
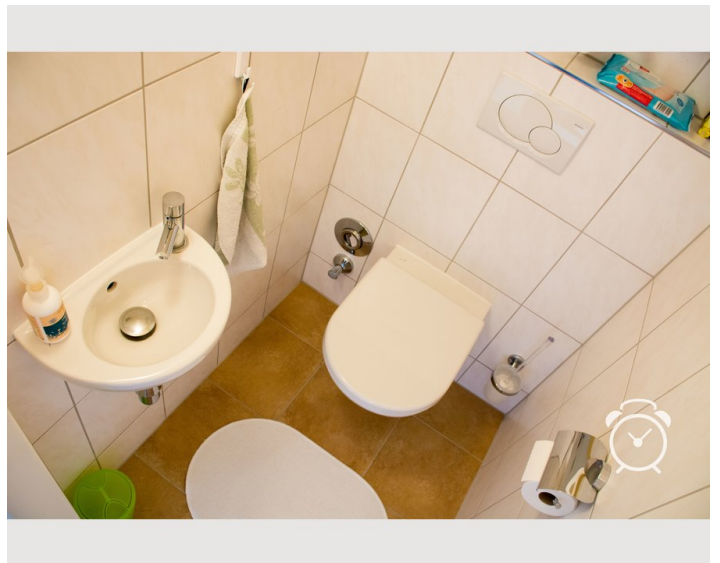
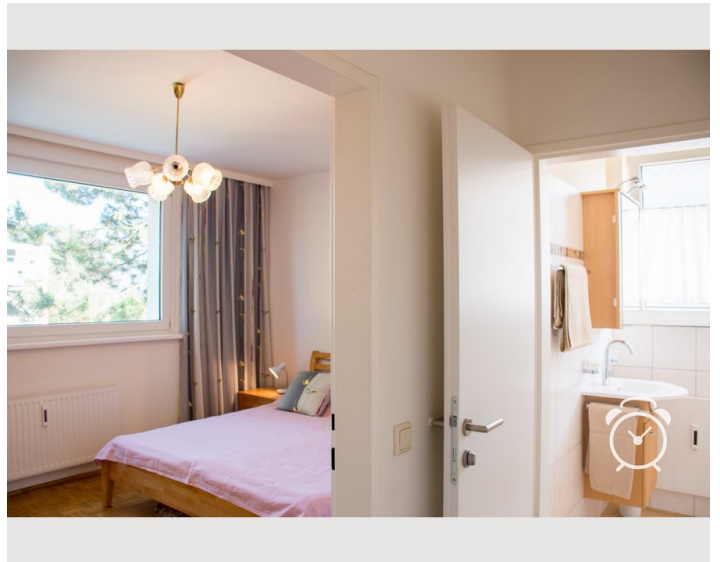
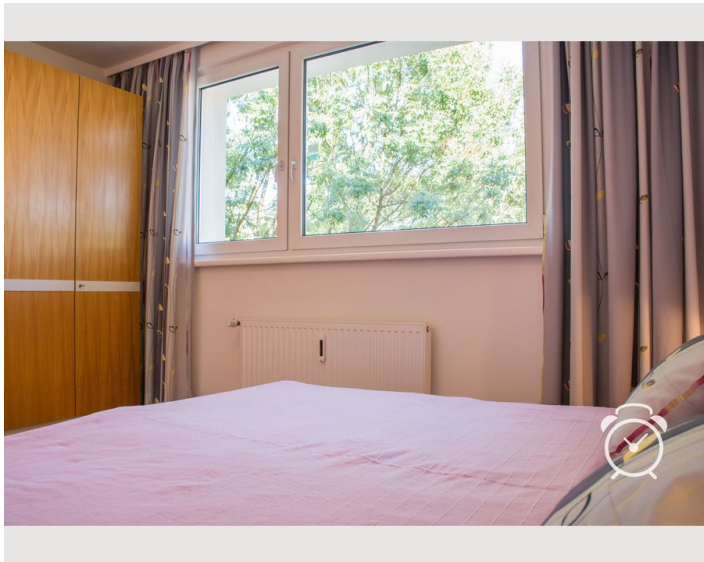
Additional services

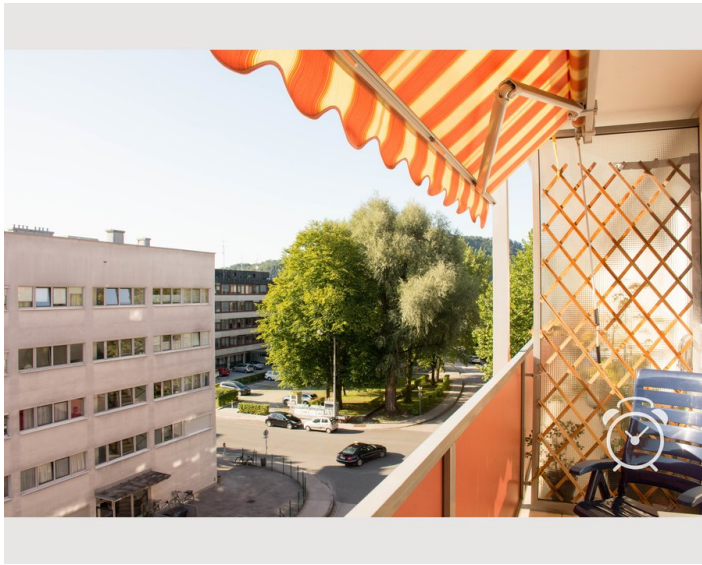
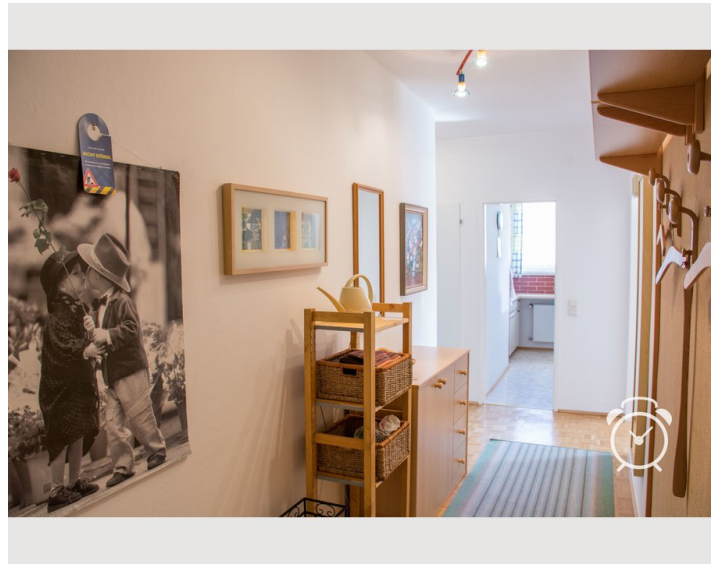
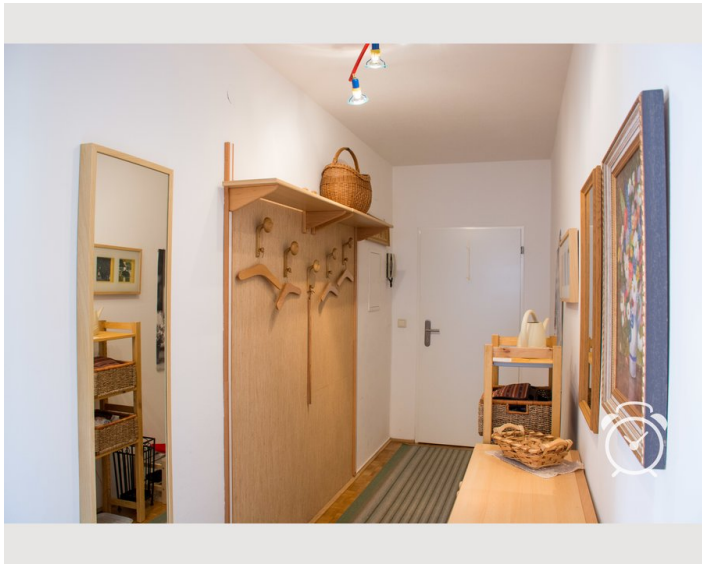
- Regular cleaning

All prices are gross per month - billing is done directly with the lessor.


Picture gallery








Infrastructure

 2 min. by walk

 15 minutes by bus

 10 minutes by bike or bus

 30 minutes by bus

 in walking distance

Particularly conveniently located: 3 bus lines, 2 of which lead directly to the centre with short intervals, all local suppliers (bakery, Spar, Billa, pharmacy, banks, pubs) nearby. The nearby cycle path along the Salzach river or across the Freisaal nature reserve leads to the centre/festival district in only 10 minutes. The NAWI can be reached in 2 to 3 minutes on foot.

Location

