

2 ROOM APARTMENT, 1150 VIENNA

## Peaceful City Apartment near Schönbrunn Palace

Object number: GLHQ1

[View and rent online](#)

Tasteful short-term apartment for professionals: 44 m<sup>2</sup>, well-designed floor plan with two rooms and a kitchen-diner. Quiet location on the first floor, close to Schönbrunn, shared use of garden possible – a pleasant retreat after a productive day.

<b>Period</b>	17/05/ - 17/06/2026
<b>Number of persons</b>	2
<b>Total incl. VAT.</b>	€ 1.650,62
<b>Security deposit</b>	€ 1.300,00



### Living space

48m<sup>2</sup>



### Maximum occupancy

1 Person



### Complete accommodation <sup>?</sup>

1 Private bathroom 2 Separated bedrooms



### 1. floor



### Check-in

16:00 - 20:00 Clock



### Check-out

10:00 - 11:00 Clock

## Sleeping options

### Bedroom 1



1x Double bed (1,80 m x 2 m)

### Bedroom 2



1x Sofa bed (1 person)

## Descripton of accommodation

Tasteful short-term apartment for professionals: 44 m<sup>2</sup>, well-designed floor plan with two rooms and a kitchen-diner. Quiet location on the first floor, close to Schönbrunn, shared use of garden possible – a pleasant retreat after a productive day.

## Equipment & Features



### Basic equipment

- Garden sharing
- TV
- Bedclothes
- Private toilet
- Iron & ironing board
- Hairdryer
- Internet/Wifi
- Private washing machine
- Towels
- Vacuum cleaner
- Cleaning utensils



### First supply

- Toilet paper
- Nespresso capsules
- Soap



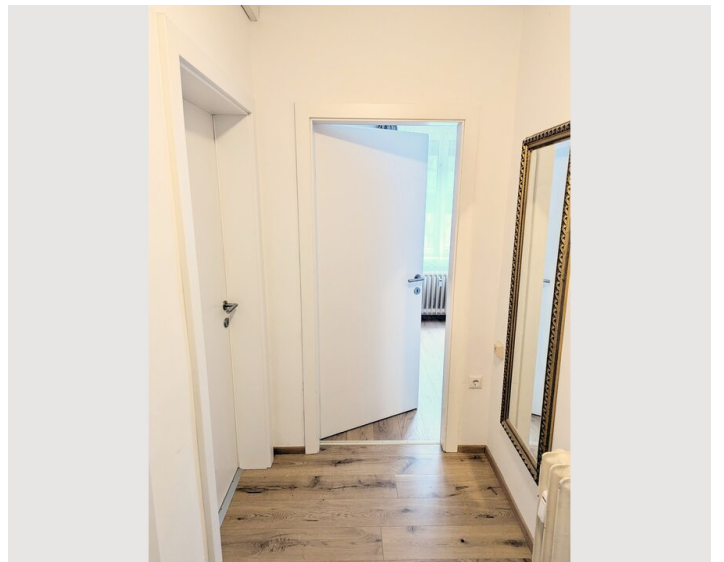
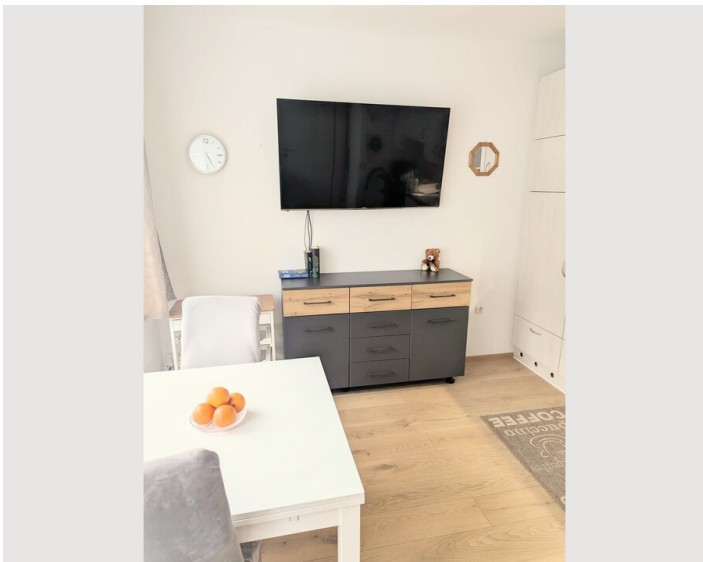
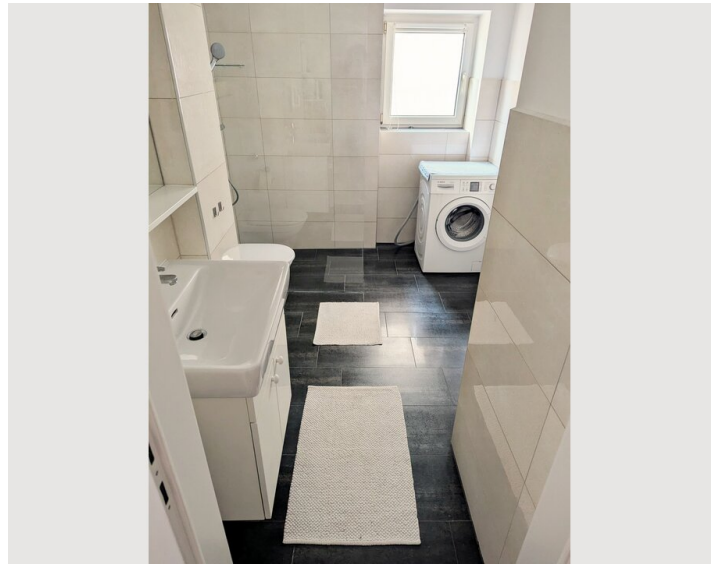
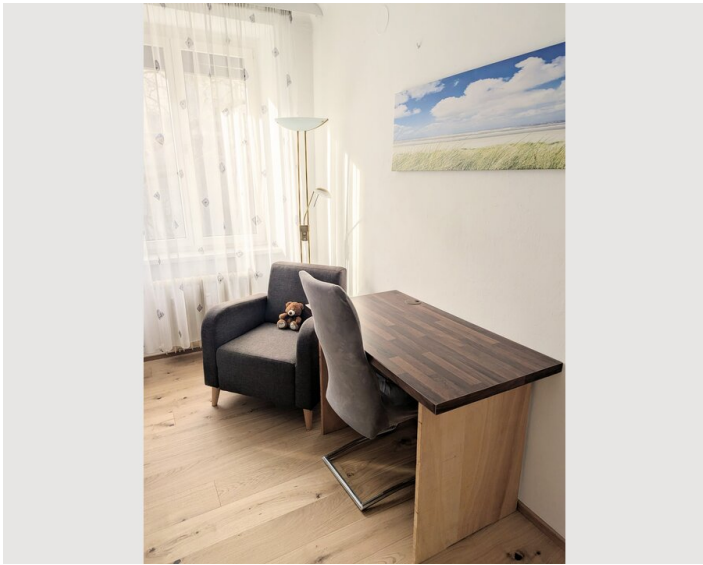
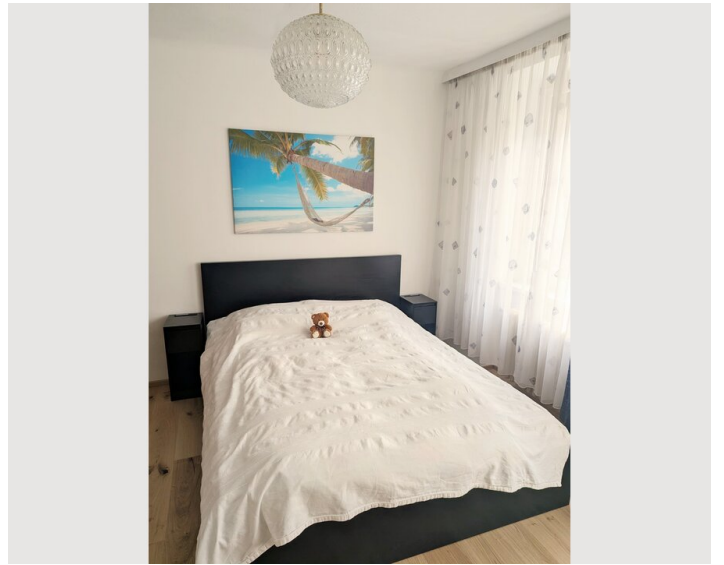
### Kitchen

- Private kitchen
- Glasses/Tableware
- Dishwasher
- Cooking utensils
- Espresso machine

## Informations


- Suitable for children
- Short-term parking zone subject to a charge
- Private entrance
- Regular cleaning at extra cost
- Smoking not allowed
- Desk/Workplace
- Pets on request
- Bicycle room free of charge


## Picture gallery





### Infrastructure

 directly in front of the accommodation

 directly in front of the accommodation

---

The nearest supermarket is directly opposite the accommodation, as is a bus stop. The nearest tram stop is a 5-minute walk away and the nearest underground station is 7 minutes away.

## Location

