



STUDIO APARTMENT, 4812 PINSDORF

## Central 1-room apartment

Object number: IBBP1

[View and rent online](#)

<b>Period</b>	04/04/ - 04/05/2026
<b>Number of persons</b>	2
<b>Total incl. VAT.</b>	€ 1.096,20
Security deposit	€ 900,00

Bright studio apartment including a spacious loggia. Quiet residential area, free outdoor parking space and internet. Located on the 2nd floor of a multi-family building without a lift.



### Living space

36m<sup>2</sup>



### Maximum occupancy

1 Person



### Complete accommodation <sup>?</sup>

1 Private bathroom 1 Living-Sleepingroom



### 2. floor



### Check-in

14:00 - 21:00 Clock



### Check-out

00:00 - 12:00 Clock

## Sleeping options

### Living & Sleeping



1x Double bed (1,40 m x 2 m)

## Description of accommodation

Quiet, recently renovated one-room apartment. Separate hallway and bathroom with toilet. The bathroom is equipped with a toilet, shower, and washing machine. A spacious built-in wardrobe is located in the hallway. The living area includes a kitchenette, sofa, and dining table with chairs. A 140cm wide box-spring bed is situated in an alcove. Two sets of towels, tea towels, and bed linens are provided. Free internet access is available. The large, south-facing loggia features two garden chairs and a small table. The apartment is very bright thanks to the large window opening onto the loggia. Despite being located in a multi-family building, the apartment is very quiet and offers a relaxing retreat from work.

## Equipment & Features



### Basic equipment

- Loggia
- TV
- Bedclothes
- Private toilet
- Vacuum cleaner
- Internet/Wifi
- Private washing machine
- Towels
- Private parking space
- Hairdryer



### First supply

- Toilet paper
- Soap



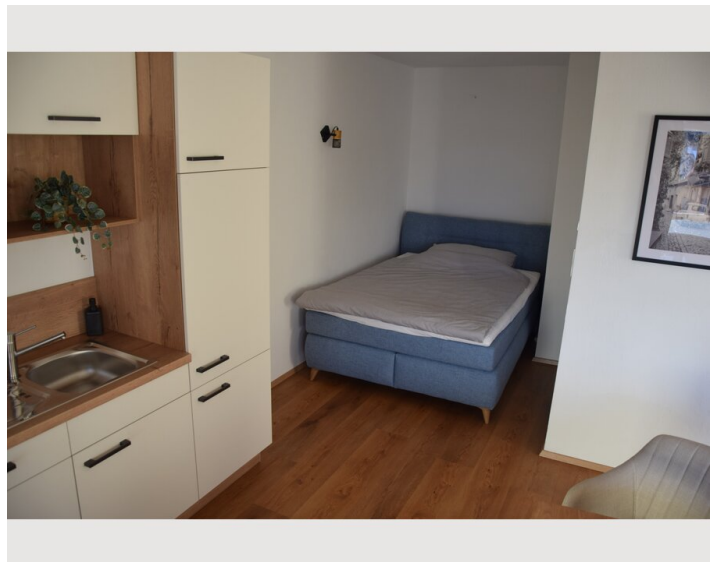
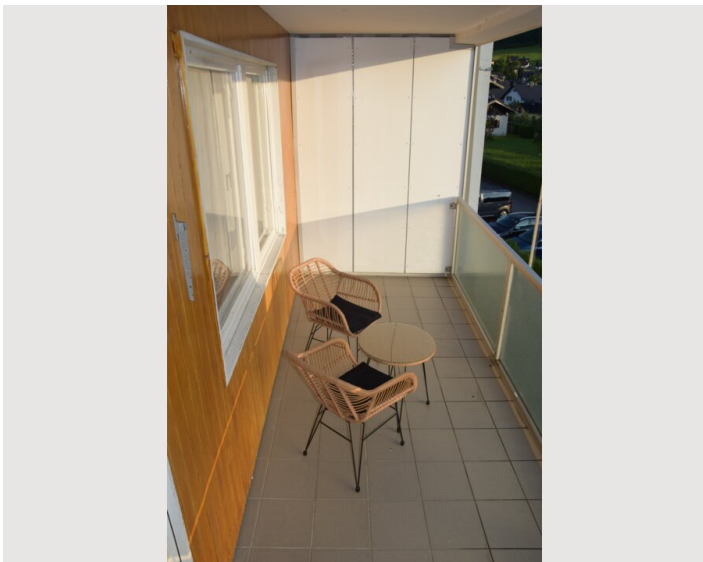
### Kitchen

- Private kitchen
- Glasses/Tableware
- Dishwasher
- Cooking utensils
- Espresso machine

## Informations


- Suitable for construction workers
- Smoking not allowed
- Bicycle room free of charge
- Not suitable for children
- Pets forbidden


## Picture gallery






### Infrastructure

 5-minute walk

 5-minute walk

 5-minute walk

---

Train station: 5-minute walk

Bus stop: 5-minute walk

Pharmacy: 5-minute walk

Supermarket (Spar): 5-minute walk

Pharmacy: 7-minute walk

Gmunden town center: 7-minute drive by car or public transport

Vöcklabruck town center: 15-minute drive by car

Gmunden hospital: 5-minute drive by car

Regau motorway access: 6-minute drive by car

Lake Traunsee: 10-minute drive

Lake Attersee: 13-minute drive

## Location

