



HOUSE, 4055 PUCKING

## Stylish SKY-LOFT

Object number: KIRN3

[View and rent online](#)

<b>Period</b>	07/04/ - 07/05/2026
<b>Number of persons</b>	2
<b>Total incl. VAT.</b>	€ 2.912,06
Security deposit	€ 2.200,00

Former architectural office, newly retrofitted/renovated end of 2025!  
STYLISH in every aspect yet 100% COMFY for daily use.



### Living space

120m<sup>2</sup>



### Maximum occupancy

3 Persons



### Complete accommodation <sup>?</sup>

1 Private bathroom 2 Separated bedrooms



### 1. floor



### Check-in

15:00 - 00:00 Clock



### Check-out

00:00 - 11:00 Clock

## Sleeping options

### Bedroom 1



1x Double bed (1,40 m x 2 m)

### Bedroom 2



1x Single bed

## Descripton of accommodation

Prime location, private entrance, private parking spaces, fully equipped, interim cleaning possible for longer stays.

## Equipment & Features



### Basic equipment

- Internet/Wifi
- Private washing machine
- Towels
- Private parking space
- Vacuum cleaner
- Cleaning utensils
- TV
- Bedclothes
- Private toilet
- Aircondition
- Iron & ironing board
- Hairdryer



### First supply

- Toilet paper
- Nespresso capsules
- Soap



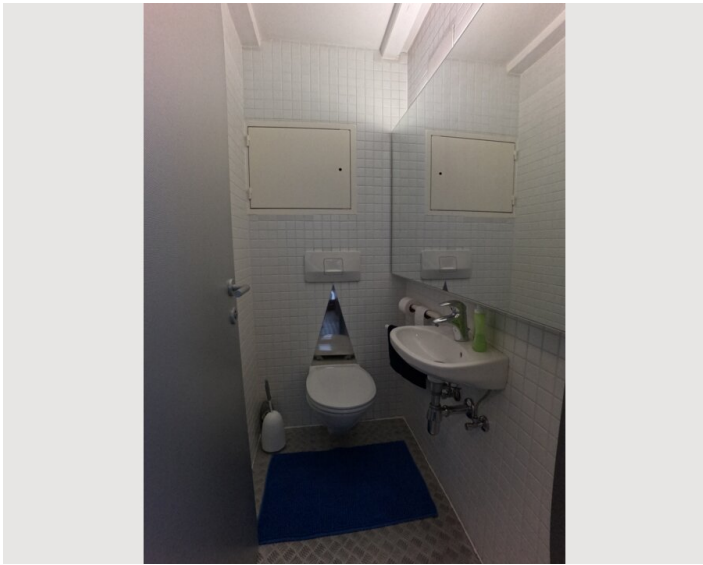
### Kitchen

- Private kitchen
- Glasses/Tableware
- Cooking utensils
- Espresso machine

## Informations

- Suitable for children
- Desk/Workplace
- Pets forbidden
- Smoking not allowed
- Private entrance
- Regular cleaning at extra cost

## Picture gallery







### Infrastructure

✈ Airport LINZ 13km

Pucking is located between Weisskirchen and Linz. Marchtrenk, Ansfelden, and Traun are also within a 10-minute drive.

The nearest SPAR supermarket is 2.4 km away; a café/restaurant/newsagent and a small shop are located in the village.

The bus stop is right in front of the house.

**Location**

