



2 ROOM APARTMENT, 1150 VIENNA

Apartment next to the Stadthalle

Object number: JKVU1

[View and rent online](#)

The apartment is located right in the 15th district of Vienna, in the so-called Nibelungenviertel. It's right next to the Stadthalle, not far from Schmelz, Lugner City, and Vogelweidpark. The public lines U3, U6, 9, 49, and 48A are nearby.

Period	05/07/ - 05/08/2026
Number of persons	2
Total incl. VAT.	€ 1.498,06
Security deposit	€ 1.100,00



Living space

45m²



Maximum occupancy

2 Persons



Complete accommodation [?]

1 Private bathroom 1 Separated bedroom



2. floor

Elevator available



Check-in

10:00 - 20:00 Clock



Check-out

10:00 - 14:00 Clock

Sleeping options

Sleeping room



1x Double bed (1,60 m x 2 m)



1x Children/baby bed



1x Sofa bed (2 persons)

Description of accommodation

It's a two-room apartment. The place has an entryway, a living room, a bedroom, a kitchen, a bathroom, and a toilet. It's on the 2nd floor and there's an elevator. It's north-facing, so it's nice in the summer, but still bright. The rooms look out onto a quiet courtyard with old, tall trees, which makes it super peaceful. Overall, the whole building is calm and well-kept. There's a bike storage area and even a garage.

Equipment & Features



Basic equipment

- Internet/Wifi
- Private washing machine
- Bedclothes
- Private toilet
- Cleaning utensils
- TV
- Private dryer
- Towels
- Vacuum cleaner



First supply

- Toilet paper
- Soap
- shampoo



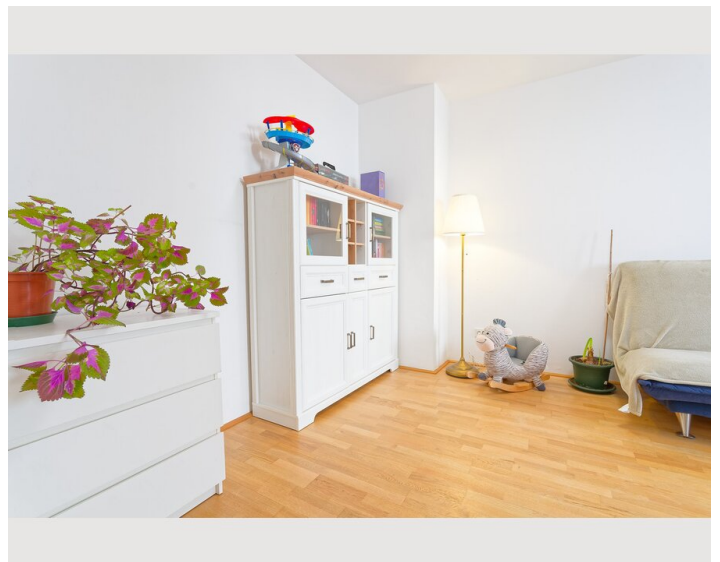
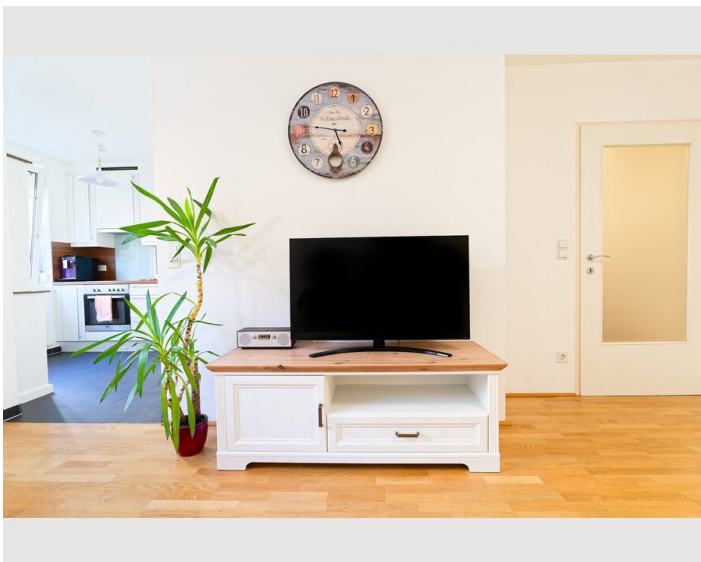
Kitchen

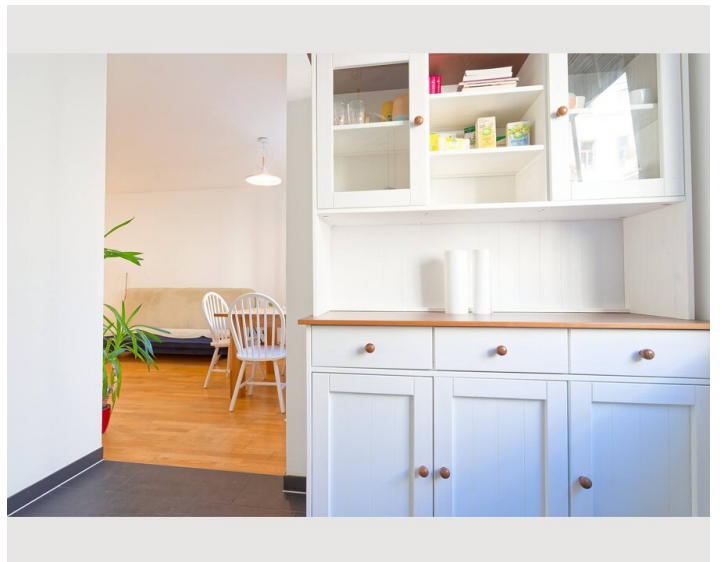
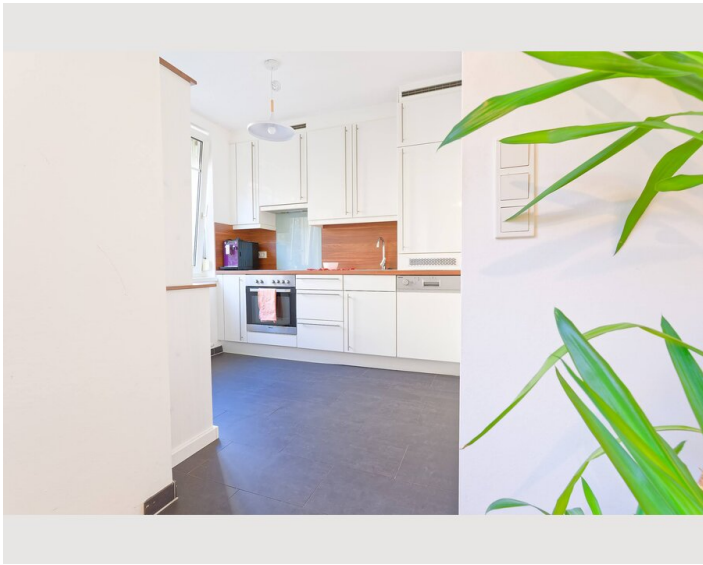
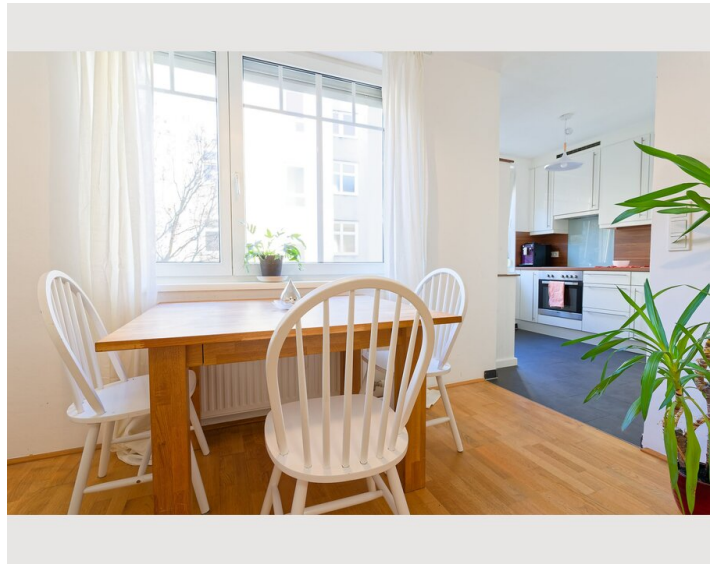
- Private kitchen
- Glasses/Tableware
- Dishwasher
- Cooking utensils
- Espresso machine

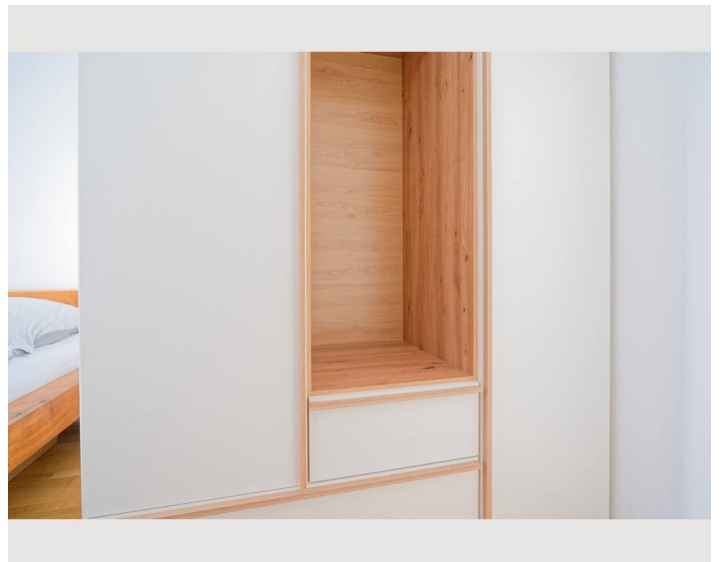
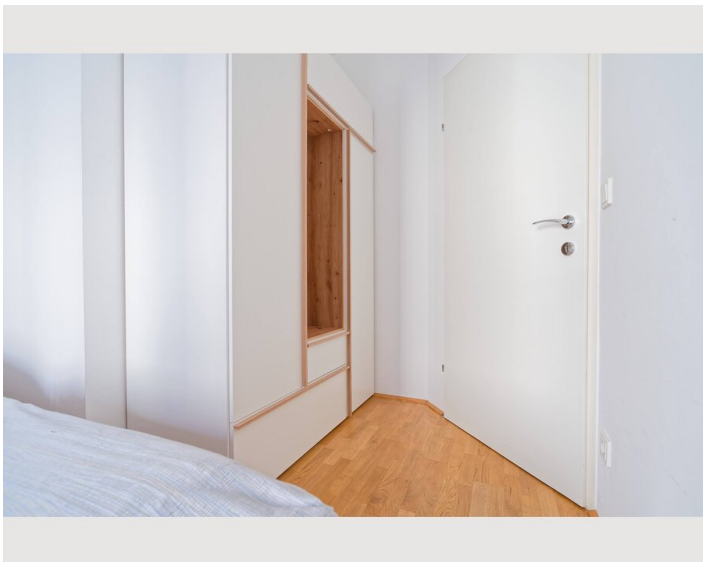
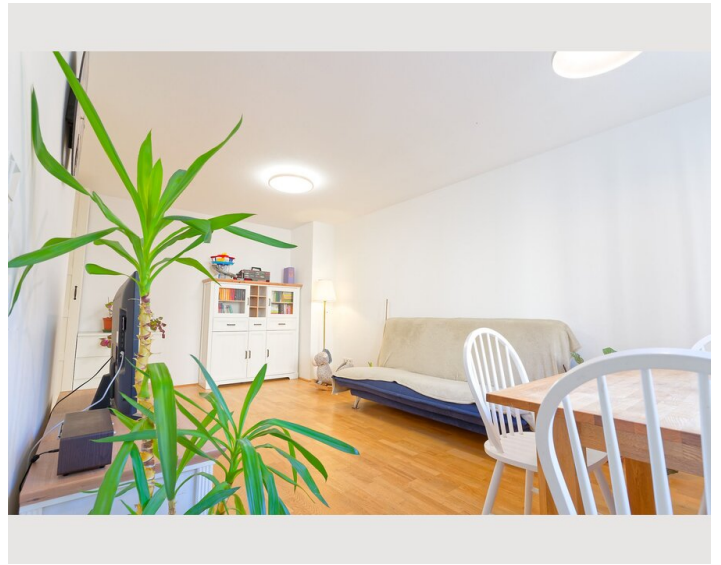
Informations

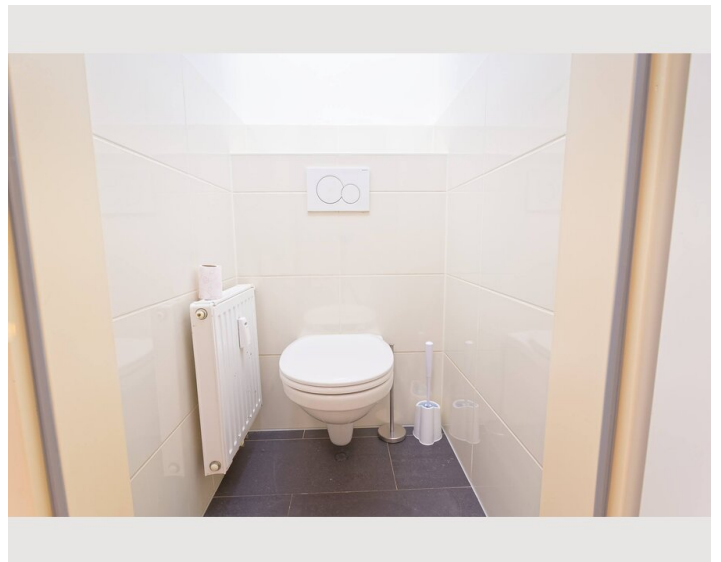
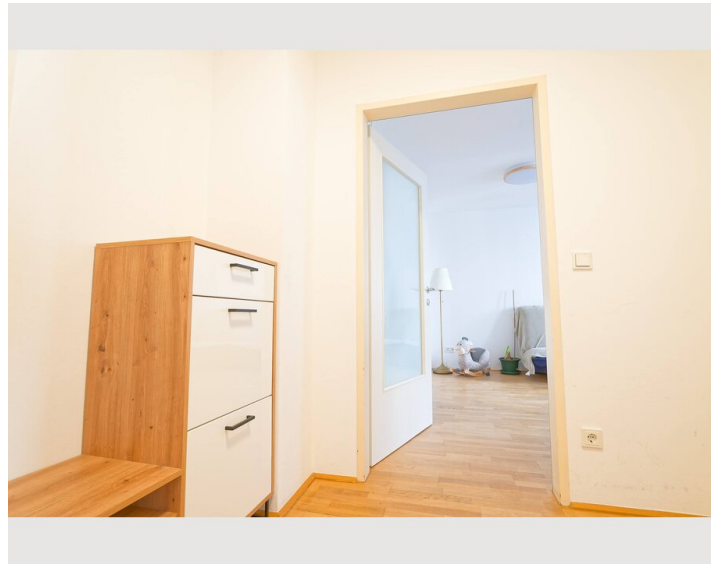
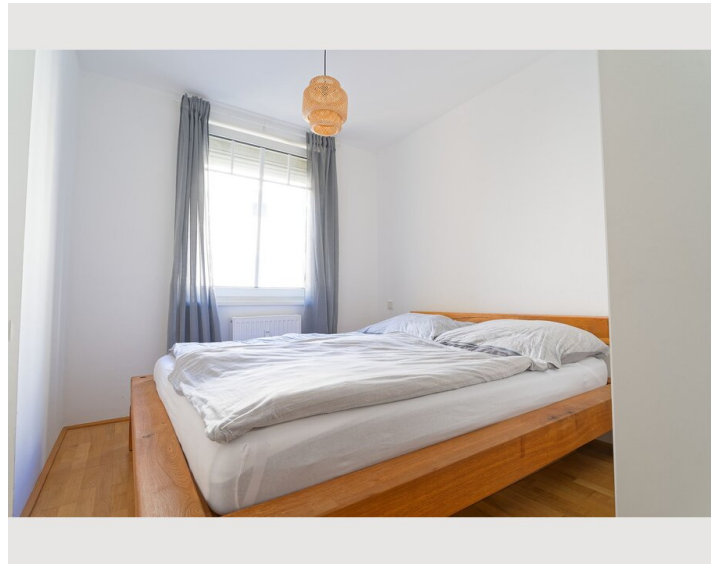
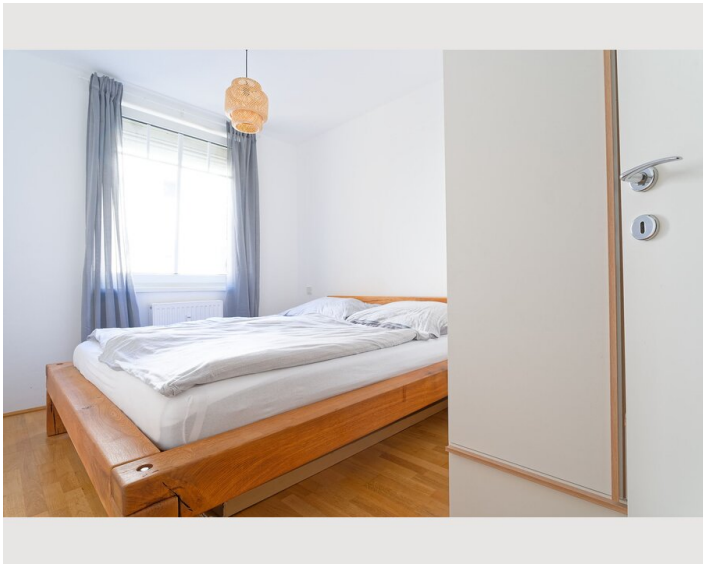
- Suitable for children
- Short-term parking zone subject to a charge
- Pets forbidden
- Bicycle room free of charge
- Smoking not allowed
- Private entrance
- Regular cleaning at extra cost

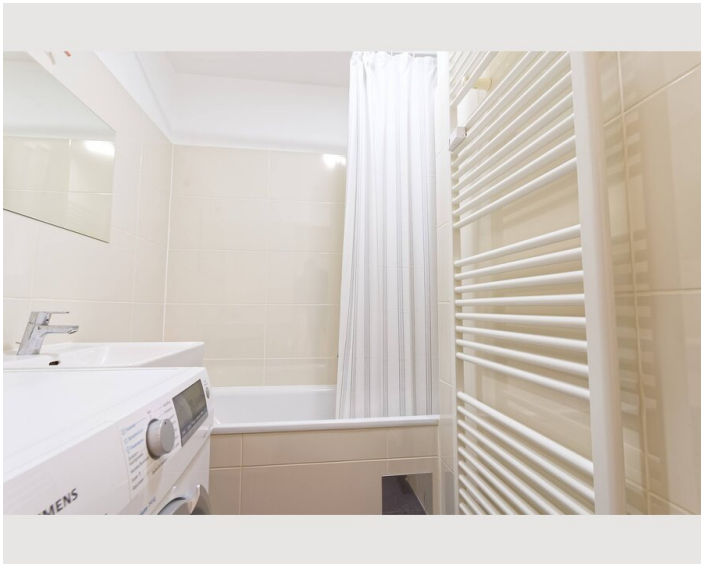
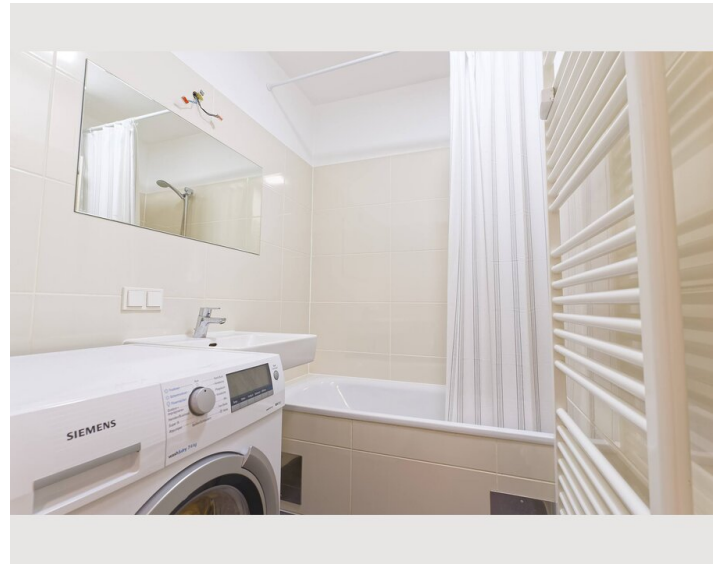
Picture gallery











Infrastructure



The apartment is just 5 minutes from the town hall, Lugner City, and the Lugner Cinema. Billa, Spar, a pharmacy, and a newsstand are also within a 5-minute walk. There are also several cafes and a bookstore very close by, and the main library is only 10 minutes away. Even if you want to take a walk in the Schmelz area, it's just a few minutes on foot.

If you want to go to the city, you can get to the Volkstheater in 15 minutes with the 48A bus. Otherwise, it's only a few stops on the U3 subway to Stephansplatz.

Location

