



2 ZIMMER WOHNUNG, 4020 LINZ

Cubierta Cozy

Object number: URBH5

[View and rent online](#)

Those who like a little more space can make themselves at home in our 45m² apartments. A king-size bed and pull-out sofa bed provide space for up to three temporary residents of Linz.

Period	16/07/ - 16/08/2025
Number of persons	2
Total incl. VAT.	€ 2.850,39
Security deposit	€ 2.200,00



Living space

45m²



Maximum occupancy

3 Persons



Complete accommodation [?]

1 private bathroom 1 Separated bedroom



1. floor

Elevator available



Check-in

15:00 - 00:00 Clock



Check-out

00:00 - 10:00 Clock

Sleeping options

Sleeping room



1x Double bed (1,80 m x 2 m)



1x Sofa bed (1 person)

Descripton of accommodation

Nice to meet you, dear neighbor: in the holiday homes and business apartments of the Cubierta, you are on eye level with the culture of Linz. Apartments are available in three sizes for business travelers, families and individuals. In a building that has history and lots of stories to tell.

At the Cubierta in Linz you live next door to locals and enjoy the comfort of a fully furnished holiday apartment.

Equipment & Features



Basic equipment

- Internet/Wifi
- Bedclothes
- Private toilet
- Iron & ironing board
- Hairdryer
- TV
- Towels
- Garage
- Cleaning utensils



First supply

- Toilet paper
- Soap
- shampoo



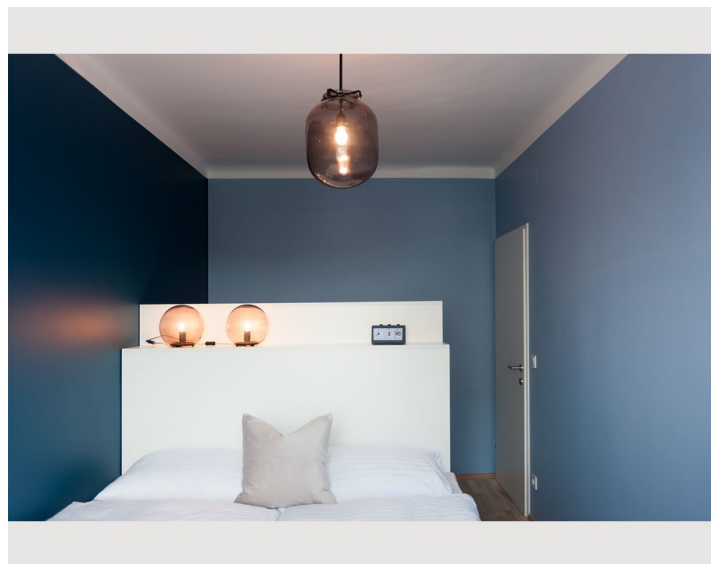
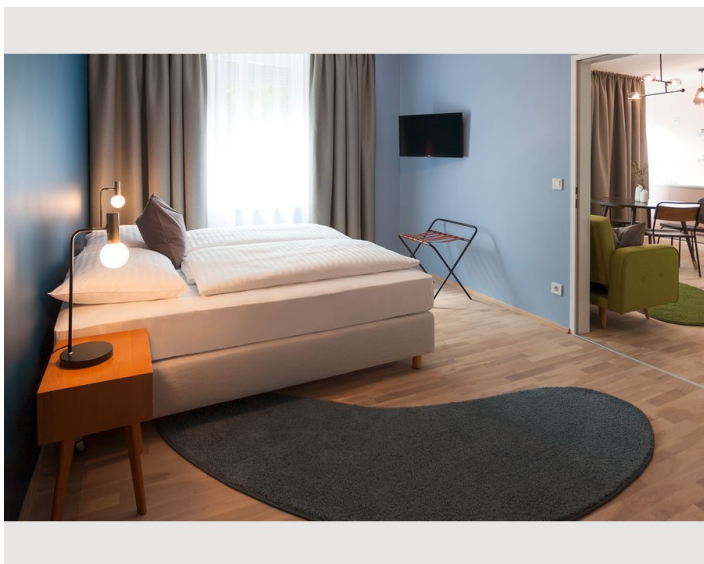
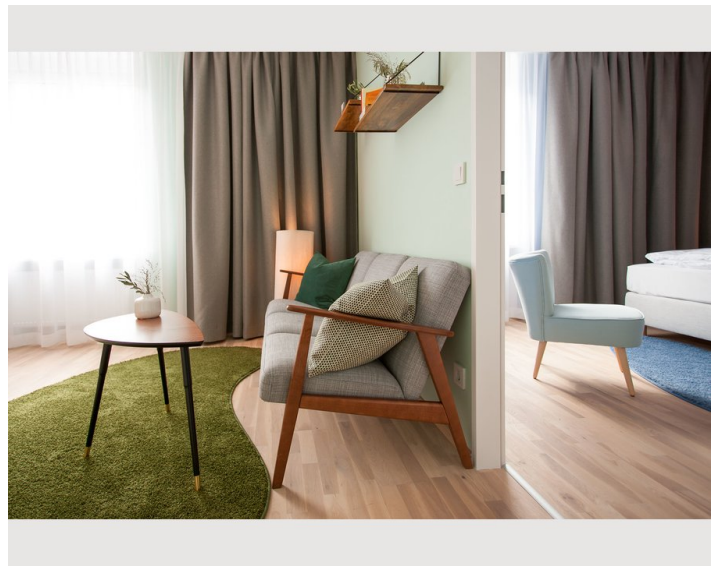
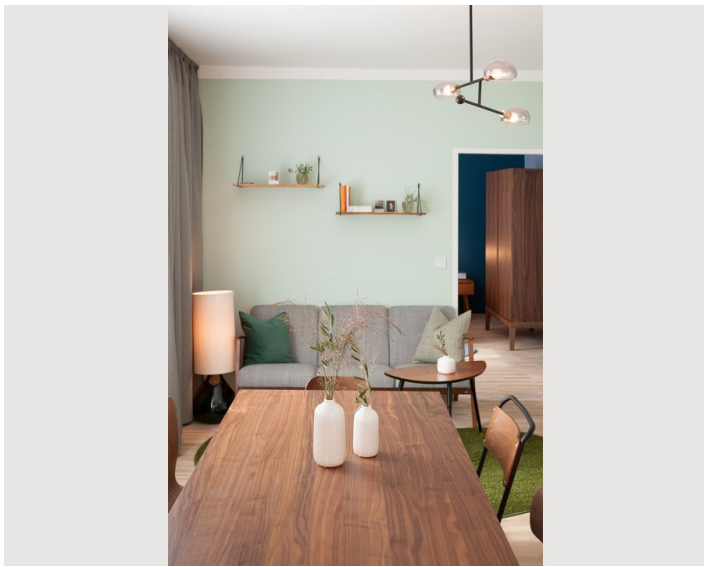
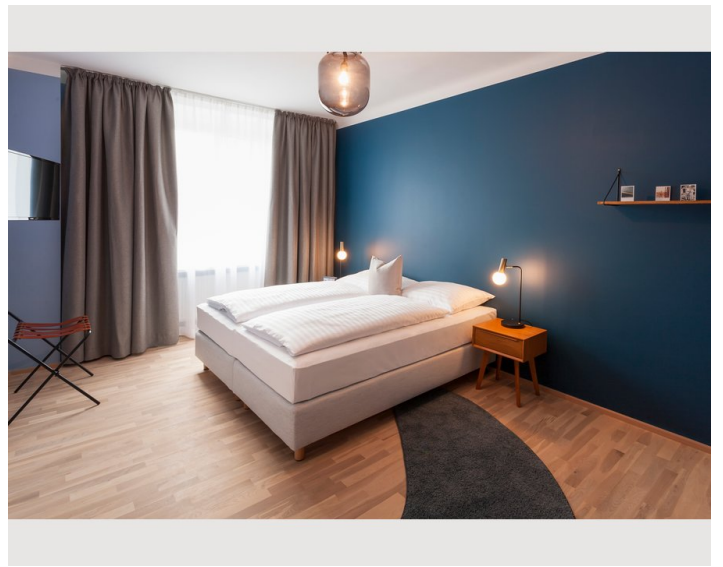
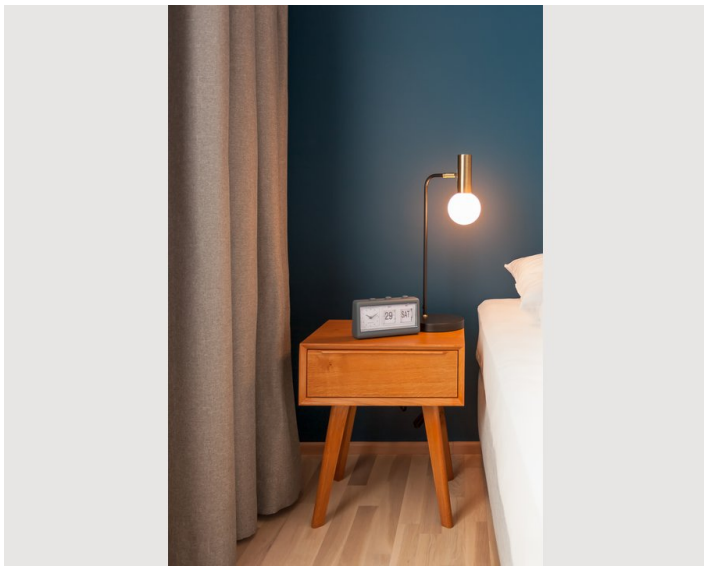
Kitchen

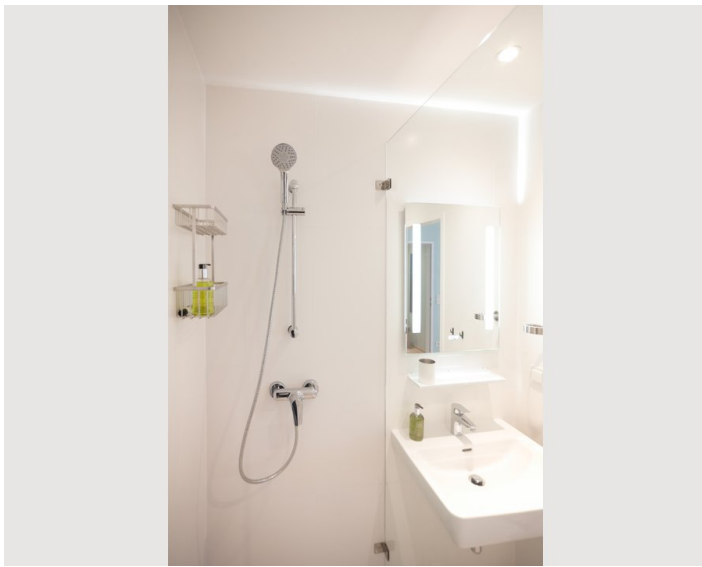
- Private kitchen
- Cooking utensils
- Filter coffee
- Kitchenette
- Glasses/Tableware
- Dishwasher

Informations


- Smoking not allowed
- Desk/Workplace
- Pets on request
- Bicycle room free of charge
- Short-term parking zone subject to a charge
- Private entrance
- Regular cleaning free of charge


Picture gallery





Infrastructure

 First destination is Linz airport „Blue Danube“ – take bus 601 (departs every 30 minutes) to Linz Hauptbahnhof (main station). From there, take bus 12 (to Karlhof) to stop „Parkbad“. From there head in the direction of Brucknerhaus and Lentos – after 2 minutes, you will find the etagerie Linz on the lefthand side. Alternatively you can take a taxi from the airport, which will cost approximately 40 Euros.

 From Linz Hauptbahnhof (main station), take bus 12 (to Karlhof) until you reach the stop „Parkbad“. Then, head in the direction of Brucknerhaus and Lentos – after 2 minutes, you will find the etagerie Linz on the lefthand side.

The Cubierta in Linz is located in a typical residential building complex of the 1950s on the edge of the Rathausviertel of Linz. The promenade at the Danube is around the corner from here, as is the center of Linz and many of its main cultural attractions, such as the Brucknerhaus, the Lentos art museum and the Ars Electronica Center.

Location

