



STUDIO APARTMENT, 5102 ANTHERING

Plenty of space under the roof

Object number: LRDE1

[View and rent online](#)

The apartment consists of a spacious attic room of almost 50 m² and a long kitchenette. In addition, there is a small room that can alternatively be used as a bedroom, office, or storage room.

Period	10/06/ - 10/07/2026
Number of persons	2
Total incl. VAT.	€ 1.419,94
Security deposit	€ 1.000,00



Living space

76m²



Maximum occupancy

4 Persons



Complete accommodation [?]

1 Private bathroom 2 Shared bedrooms



2. floor



Check-in

15:00 - 22:00 Clock



Check-out

08:00 - 10:00 Clock

Sleeping options

Living & Sleeping 1



1x Sofa bed (2 persons)

Living & Sleeping 2



1x Sofa bed (1 person)

Descripton of accommodation

The spacious attic room, measuring almost 50 m², offers a great deal of flexibility in terms of layout and use. Currently, there is a built-in wooden mezzanine under the roof, accessible by a ladder (please note: not suitable for young children). A mattress for one, or at most two, people is located there.

If this is too much trouble, a bed or a sofa bed can be set up in the room itself.

The room is generally large enough for a double bed, a sofa, and a generous dining table with six chairs.

The room is not used as an apartment during the year, so there are currently flexible usage options. The first tenant can still express their preferences regarding the layout – whether a bed is needed, or whether they would prefer to sleep on the mezzanine, thus gaining even more space.

From the anteroom, you can access the shower with toilet and washing machine. Outside the apartment, but directly in front of it, there is another room that can also be used. This room could be used, for example, as an office, an additional bedroom, or even as a storage room. There are no other residents on this floor.

Equipment & Features



Basic equipment

- Internet/Wifi
 - Bedclothes
 - Private toilet
 - Vacuum cleaner
 - Hairdryer
 - Private washing machine
 - Towels
 - Private parking space
 - Cleaning utensils
-



First supply

- Toilet paper
 - Soap
 - shampoo
-



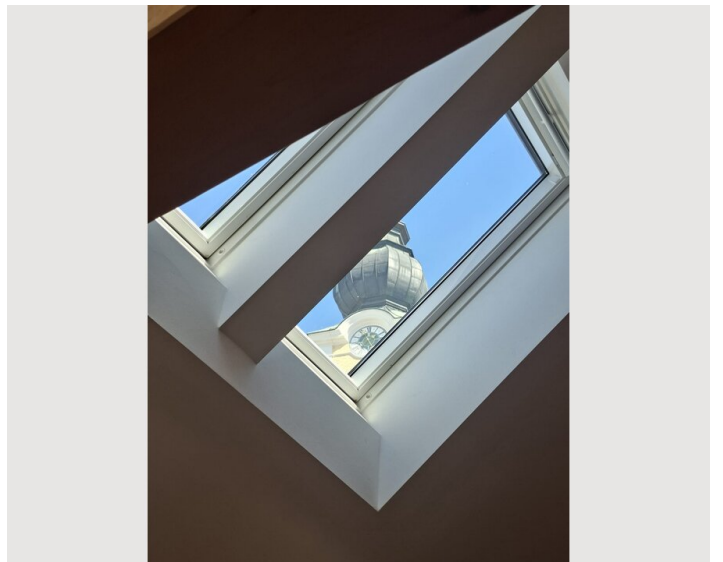
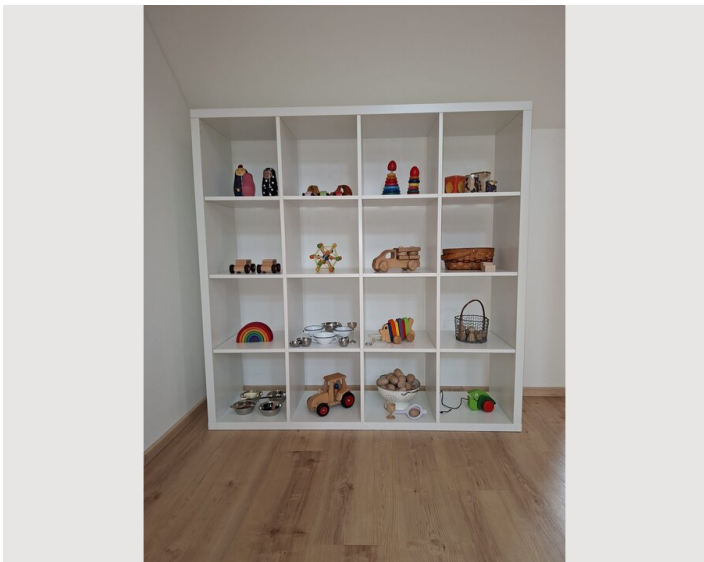
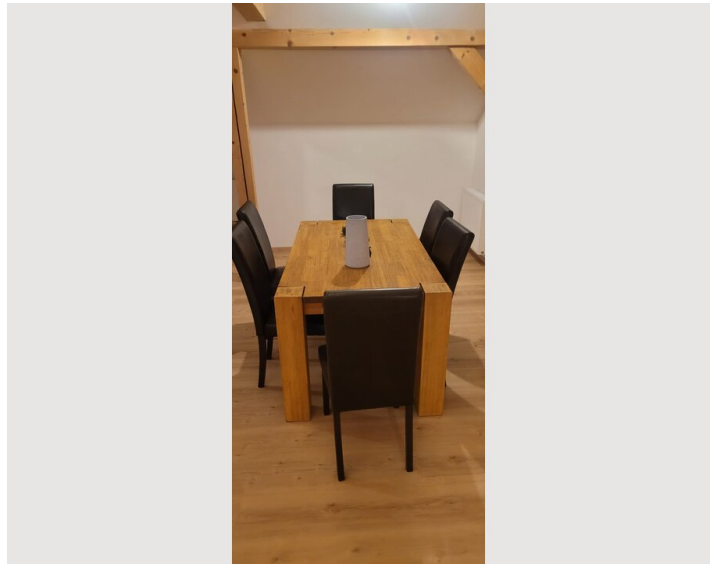
Kitchen

- Private kitchen
- Glasses/Tableware
- Dishwasher
- Cooking utensils
- Espresso machine

Informations

- Suitable for children
- Free short-term parking zone
- Pets forbidden
- Smoking not allowed
- Private entrance
- Regular cleaning at extra cost

Picture gallery





Infrastructure

 bus stop at 50 m

 railway station at 1,1 km

 supermarket at 300 m

Anthering is a village of approximately 4,000 inhabitants, located about 8 km north of Salzburg, the city of the Salzburg Festival and Mozart. In the center of Anthering, you'll find a medium-sized supermarket, a bakery with a café, a restaurant, and a simple pizzeria. Salzburg is a 10-minute drive away, and 15 minutes by public transport (bus and train). You can also reach Salzburg by bicycle in 35 minutes via pleasant bike paths.

Anthering is ideal for a relaxing stay.

Location

