



2 ROOM APARTMENT, 5020 SALZBURG

## Centrally located 2-room period apartment at the foot of Mönchsberg

Object number: GYÖK2

[View and rent online](#)

2-room period apartment on the third floor of a private, very centrally located historic villa at the foot of Mönchsberg.

<b>Period</b>	10/04/ - 10/05/2026
<b>Number of persons</b>	2
<b>Total incl. VAT.</b>	€ 2.300,67
Security deposit	€ 1.700,00



### Living space

70m<sup>2</sup>



### Maximum occupancy

2 Persons



### Complete accommodation <sup>?</sup>

1 Private bathroom 1 Separated bedroom



### 3. floor



### Check-in

09:00 - 20:00 Clock



### Check-out

09:00 - 12:00 Clock

## Sleeping options

### Sleeping room



1x Double bed (1,80 m x 2 m)

## Description of accommodation

The apartment is very bright and filled with natural light. The bedroom features a queen-size bed (140 × 200 cm). The living room, with a sofa and TV, is very cozy—perfect for unwinding at the end of the day. The view from all rooms is expansive, extending all the way to the mountains.

Adjacent to the living room, accessible through an open passage, is the eat-in kitchen with a modern fitted kitchen and a table for four people. The apartment also has three small storage rooms, each connected to the kitchen, living room, and hallway.

The bathroom is equipped with a Miele washing machine and dryer.

There is a secured outdoor parking space at the building with an electric gate. An additional parking space can also be rented. Bicycles can be stored in a covered area in the courtyard.

## Equipment & Features

### Basic equipment

- Internet/Wifi
- Private washing machine
- Bedclothes
- Private toilet
- Vacuum cleaner
- Cleaning utensils
- TV
- Private dryer
- Towels
- Private parking space
- Iron & ironing board
- Hairdryer

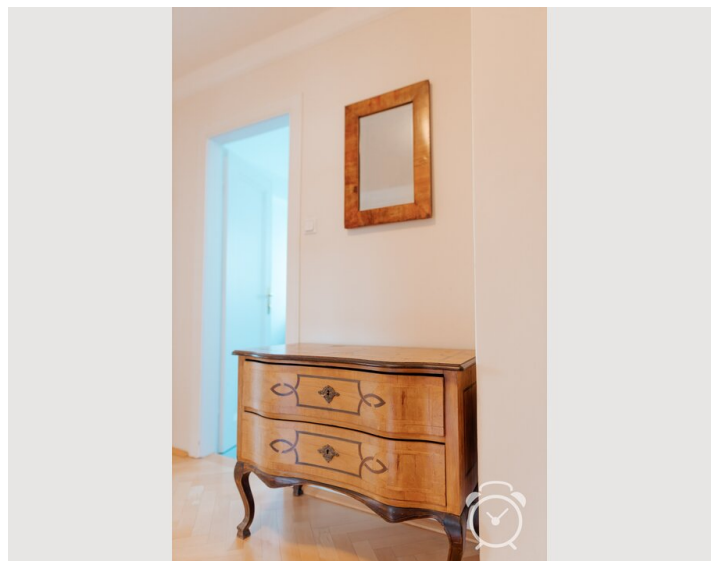
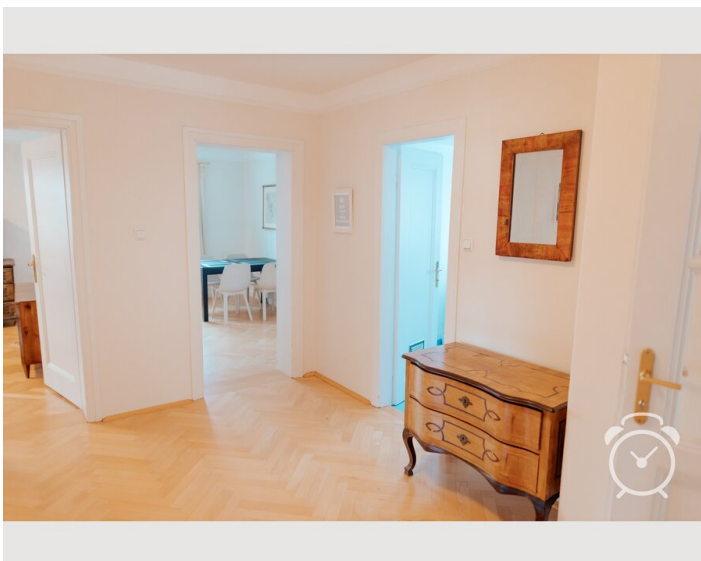
### Kitchen

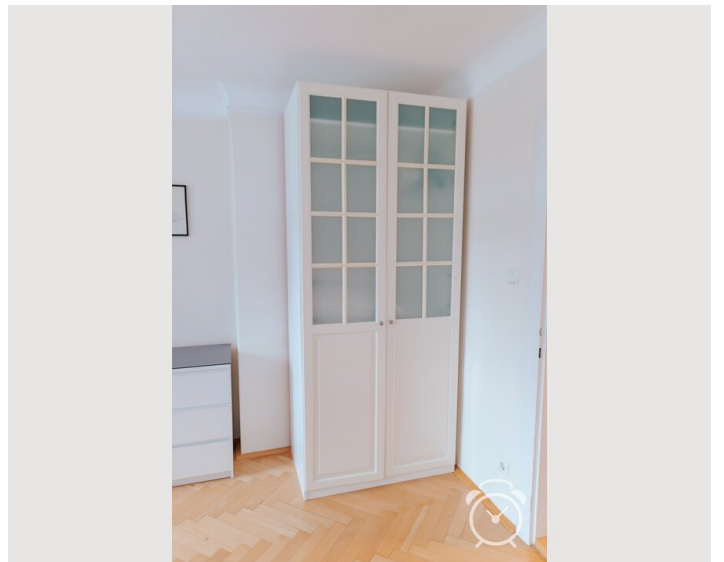
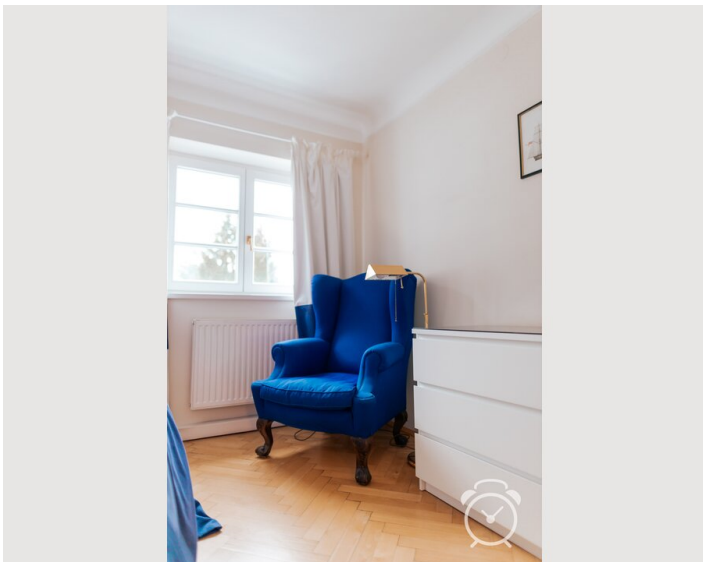
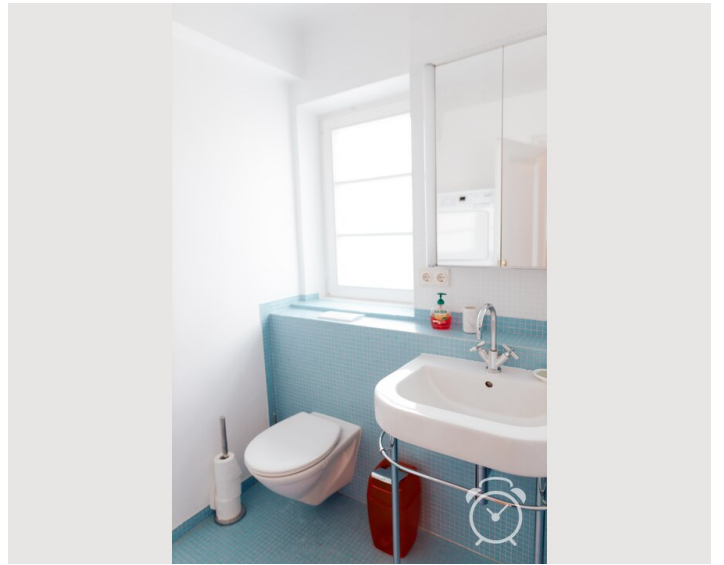
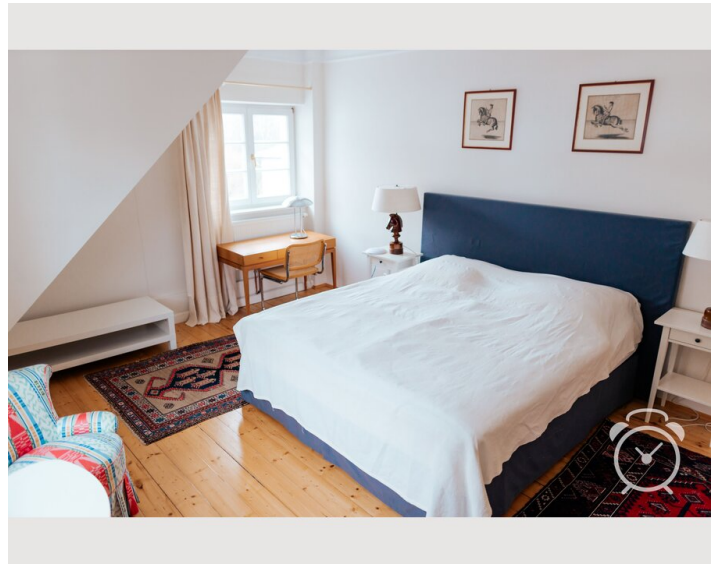
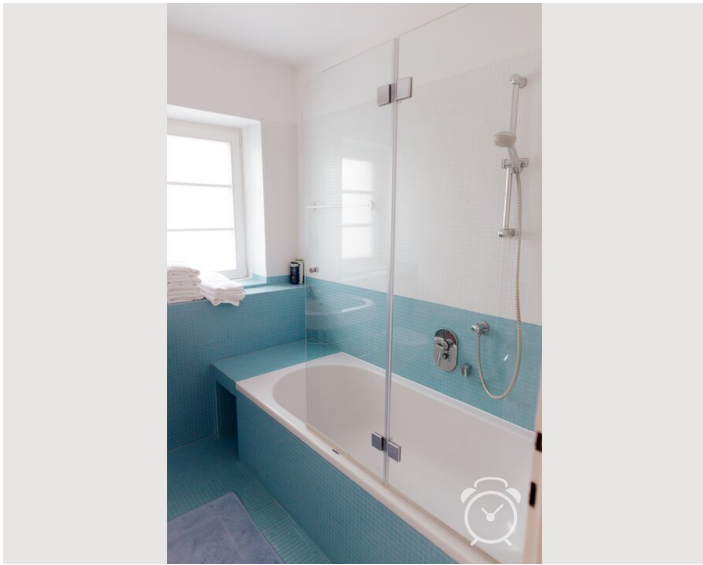
- Private kitchen
- Glasses/Tableware
- Filter coffee
- Cooking utensils
- Espresso machine
- Dishwasher

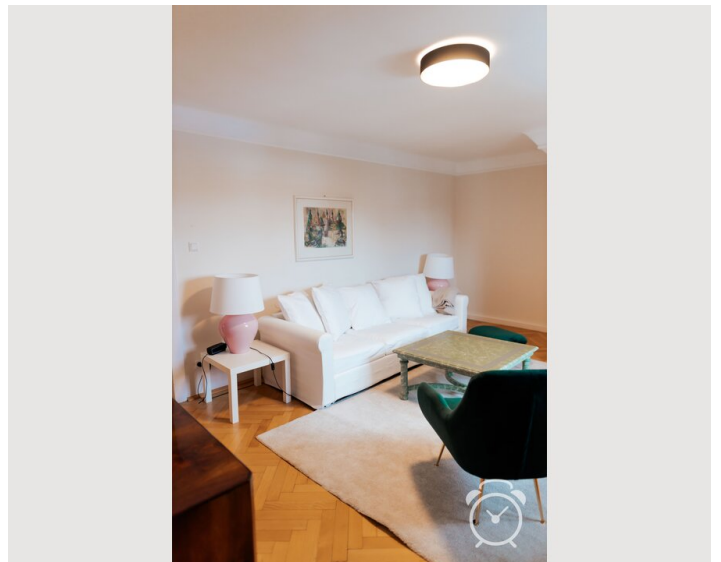
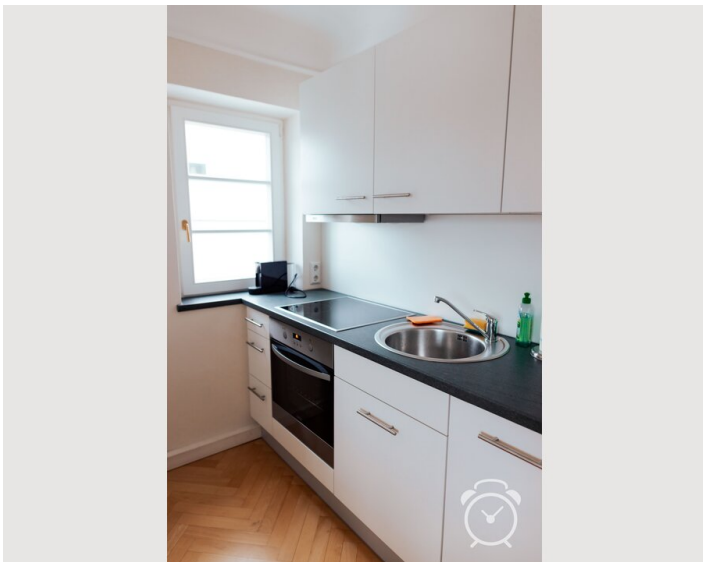
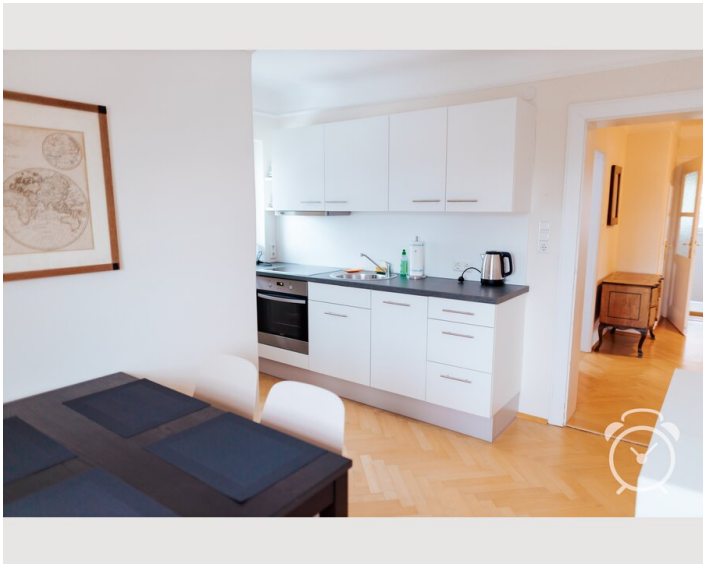
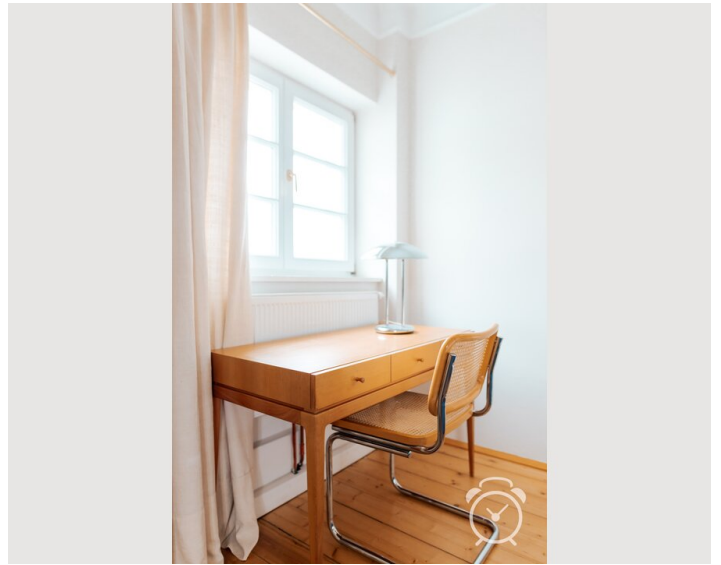
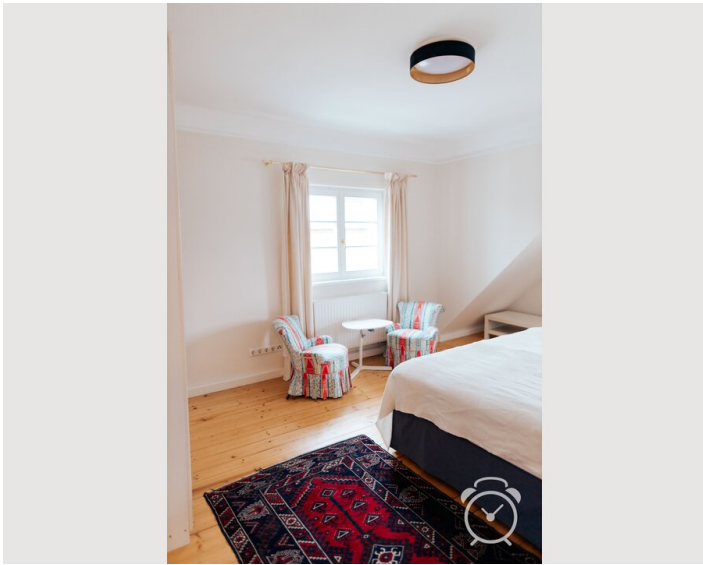
## Informations

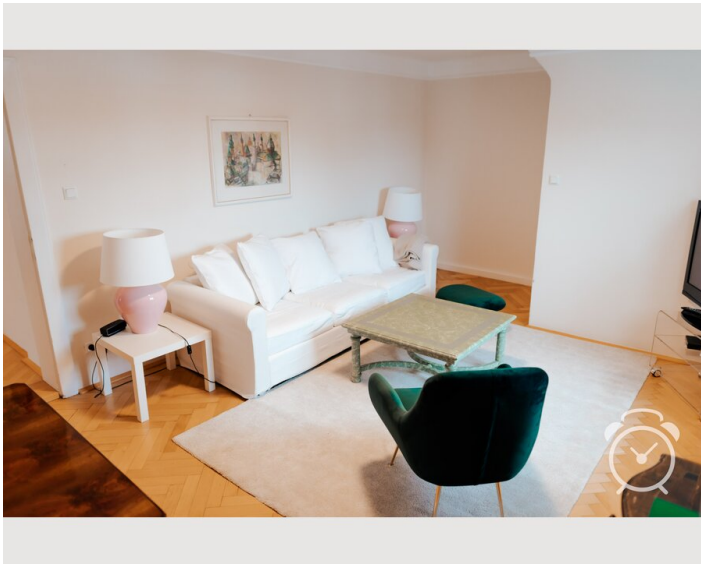
- Smoking not allowed
- Desk/Workplace
- Pets forbidden
- Short-term parking zone subject to a charge
- Private entrance
- Regular cleaning at extra cost

## Picture gallery











### Infrastructure

 2 minutes walk

 10 minutes walk

---

All shops for daily needs are very easily reachable on foot. You can also get to the city center on foot in 15 minutes. The LKH (state hospital) is directly adjacent. The apartment is located right at the foot of the Mönchsberg

## Location

