



2 ROOM APARTMENT, 83404 AINRING

## Beautiful mountain view, high quality apartment

Object number: SCHY2

[View and rent online](#)

High-quality furnished apartment with a stunning mountain view — dishwasher, washing machine, and cooking utensils all fully provided. Includes a parking space.

<b>Period</b>	26/05/ - 26/06/2026
<b>Number of persons</b>	2
<b>Total incl. VAT.</b>	€ 3.490,97
<b>Security deposit</b>	€ 2.500,00



### Living space

50m<sup>2</sup>



### Maximum occupancy

2 Persons



### Complete accommodation <sup>?</sup>

1 Private bathroom 1 Separated bedroom 1 Living-Sleepingroom



### 2. floor



### Check-in

16:00 - 20:00 Clock



### Check-out

06:00 - 10:00 Clock

## Sleeping options

### Sleeping room



1x Double bed (1,80 m x 2 m)

### Living & Sleeping



1x Sofa bed (2 persons)

## Descripton of accommodation

Welcome to Your Cozy Retreat in Ainring

Enjoy a relaxing stay in this charming apartment in Ainring — an ideal choice for professionals, couples and families looking for comfort, convenience, and a beautiful setting close to nature.

With one bedroom, a modern bathroom, and a welcoming living area, the apartment offers plenty of space to unwind and spend quality time together.

### Apartment Highlights

- Large balcony with mountain views: Relax outdoors and enjoy the fresh air and beautiful alpine scenery
- Fully equipped kitchen: Prepare your favourite meals with ease — the kitchen includes an oven, induction hob, dishwasher, cookware, tableware, and all essential utensils
- Modern bathroom: Featuring a shower and washing machine
- Private parking: A dedicated parking space is available for your convenience
- Entertainment: TV for relaxed evenings at home

### Explore the Area

Ainring offers a wide range of leisure activities and attractions for all ages:

- Ainring outdoor swimming pool with adventure slide and sports pool
- Ainring Moor with family-friendly walking trails within walking distance
- The Högl area right on your doorstep — perfect for hiking and mountain biking
- Salzburg just a short distance away
- Ferry Porsche Toy Museum and many other local attractions
- Salt mines, ski slopes, the Watzmann and Königssee (hiking region), and Lake Chiemsee (for swimming and watersports) — all reachable in under an hour, making them ideal for relaxed day trips

### Perfect for Families

This child-friendly apartment offers enough space for families to enjoy a comfortable stay together.

### Important Information

Please note that pets and smoking in the apartment are not allowed, helping us maintain a pleasant atmosphere for all guests.

More than just a place to stay, this apartment is a welcoming retreat for unforgettable moments with your loved ones. Book now and enjoy a comfortable holiday in beautiful Ainring.

## Equipment & Features

### Basic equipment

- Balcony
- Roof-terrace
- Private washing machine
- Towels
- Private parking space
- Vacuum cleaner
- Loggia
- TV
- Bedclothes
- Private toilet
- Parking on the road without time limit without any cost

### First supply

- Toilet paper

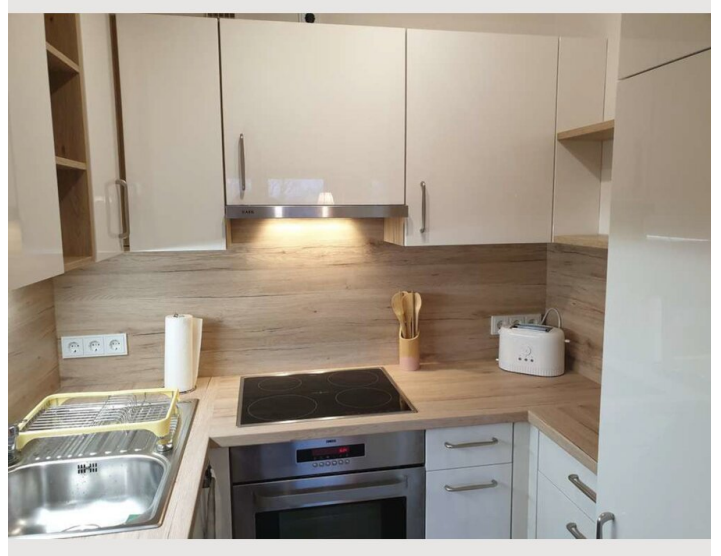
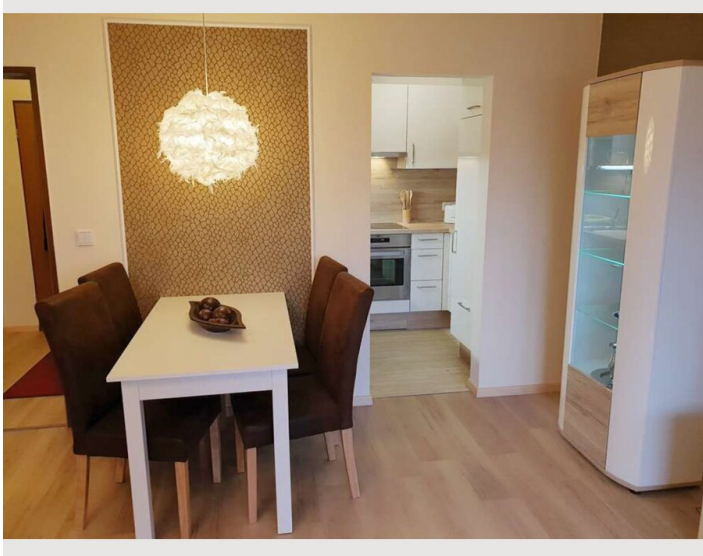
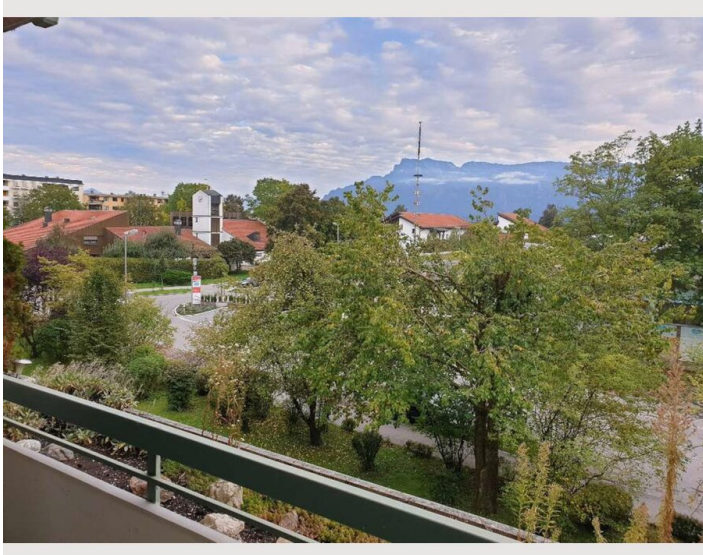
### Kitchen

- Private kitchen
- Glasses/Tableware
- Dishwasher
- Cooking utensils
- Filter coffee

## Informations

- Smoking not allowed
- Bicycle room free of charge
- Pets forbidden

## Picture gallery





## Infrastructure



Edeka, Penny, bakery



bus connections to Freilassing



train station Mitterfelden / Ainning



Ice cream parlors, pubs, restaurants, and bakeries can all be reached on foot.

---

Quiet residential complex in the climatic health resort of Ainning. The town is located in the heart of Upper Bavaria's Rupertiwinkel region, between the city of Salzburg, birthplace of Mozart, and the Berchtesgaden Alps. Ainning has 9,907 inhabitants and covers an area of 32.97 km<sup>2</sup>. The Ainning adventure pool is within walking distance.

The Globus department store can be reached by car in about 5 minutes. The town offers excellent infrastructure, including doctors' offices, a pharmacy, bank branches, supermarkets (Edeka right outside the front door, Penny a 4-minute walk away), a post office, restaurants and cafés, as well as the well-known and popular ice cream parlor, famous far beyond the regional border.

The Ainning S-Bahn stop is only 450 meters away on foot. By S-Bahn, you can reach Salzburg Central Station in just 15 minutes and the center of Bad Reichenhall in 10 minutes.

## Location

