



STUDIO APARTMENT, 1100 VIENNA

## Studio Room near Belvedere/Hauptbahnhof

Object number: YBQM1

[View and rent online](#)

Make yourself at home in Vienna, with all the independence of apartment living and the ease of a hotel stay. Our Serviced Apartments are made for longer stays, quick city breaks, business trips or a change of scene for your workday.

<b>Period</b>	17/05/ - 17/06/2026
<b>Number of persons</b>	2
<b>Total incl. VAT.</b>	€ 4.213,82
<b>Security deposit</b>	€ 3.200,00



### Living space

25m<sup>2</sup>



### Maximum occupancy

2 Persons



### Complete accommodation <sup>?</sup>

1 Private bathroom 1 Living-Sleepingroom



### 7. floor

Elevator available



### Check-in

15:00 - 23:59 Clock



### Check-out

00:00 - 11:00 Clock

## Sleeping options

### Living & Sleeping



1x Double bed (1,60 m x 2 m)

## Description of accommodation

Choose from 131 contemporary studio and apartments, with each apartment providing a kitchenette and comfortable living space so you can cook, unwind or catch up on work in your own time. You'll also have access to the things that make everyday life easier, a well-equipped gym, Wi-Fi, a central laundry and underground parking. When you feel like being social, the communal lounge on the ground floor is a relaxed space to work, meet or simply sit with a coffee.

### Equipment & Features



#### Basic equipment

- Internet/Wifi
- Community washing machine
- Bedclothes
- Private toilet
- Iron & ironing board
- TV
- Community dryer
- Towels
- Garage



#### First supply

- Toilet paper
- Soap
- shampoo
- Nespresso capsules



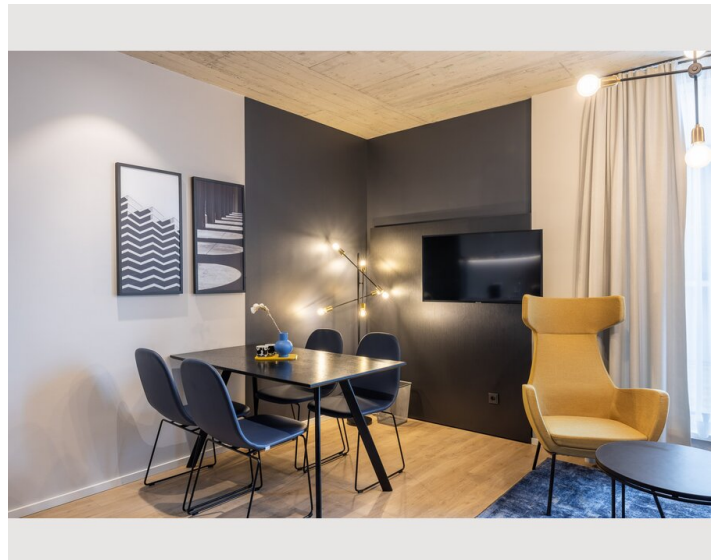
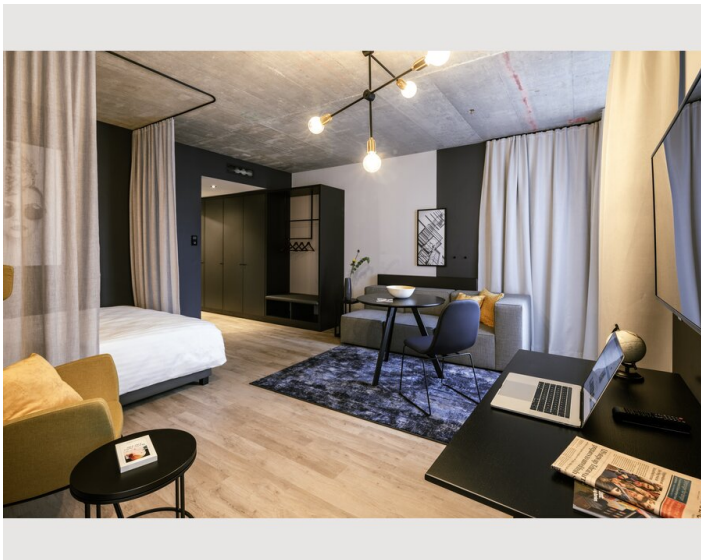
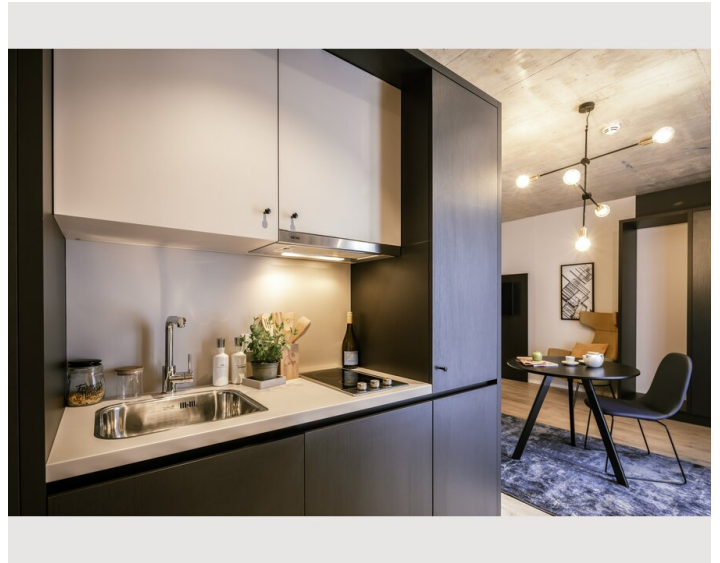
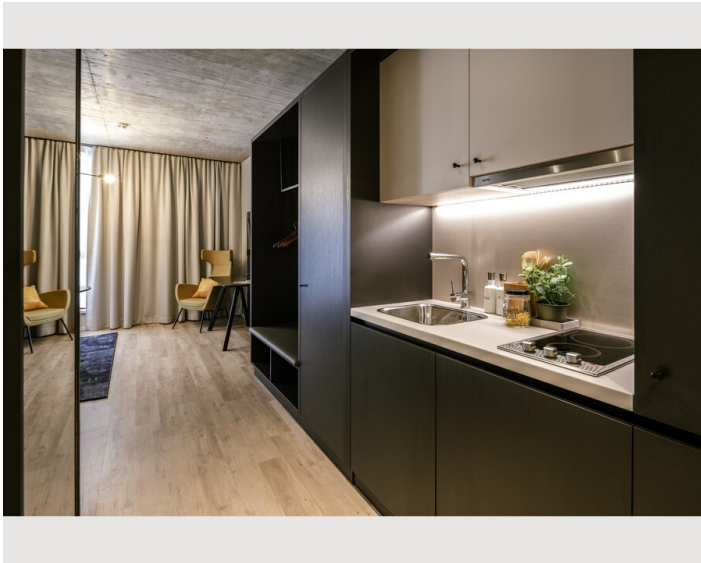
#### Kitchen

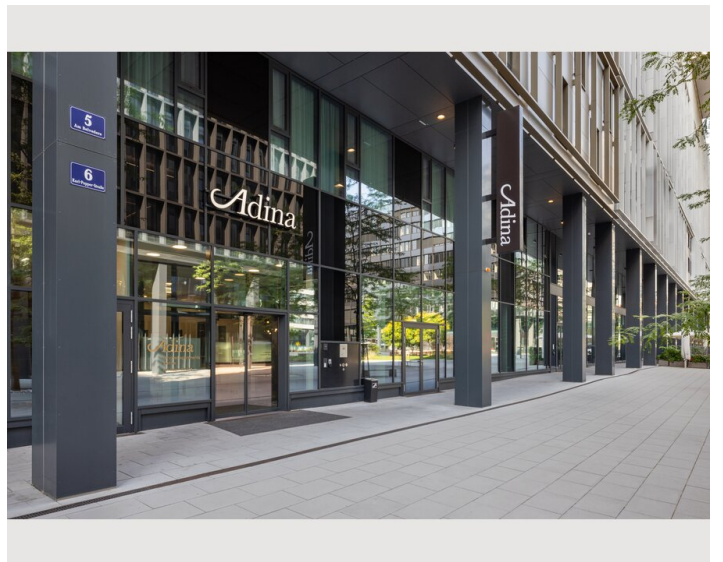
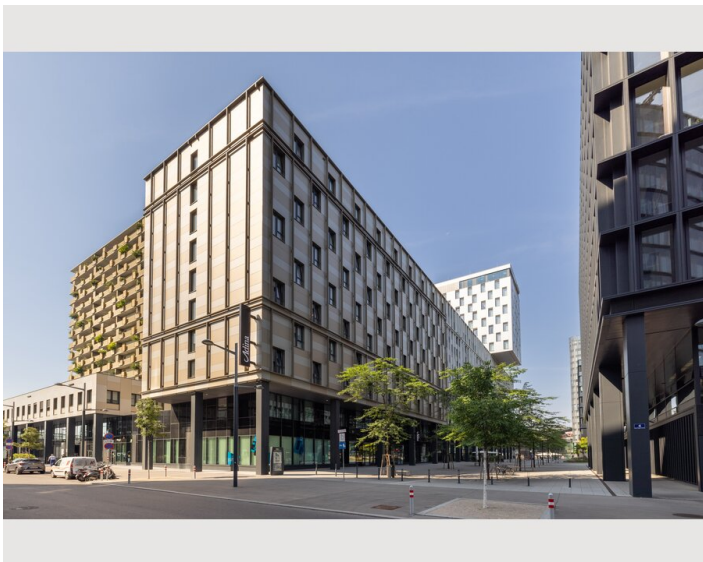
- Kitchenette
- Glasses/Tableware
- Dishwasher
- Cooking utensils
- Espresso machine
- Microwave

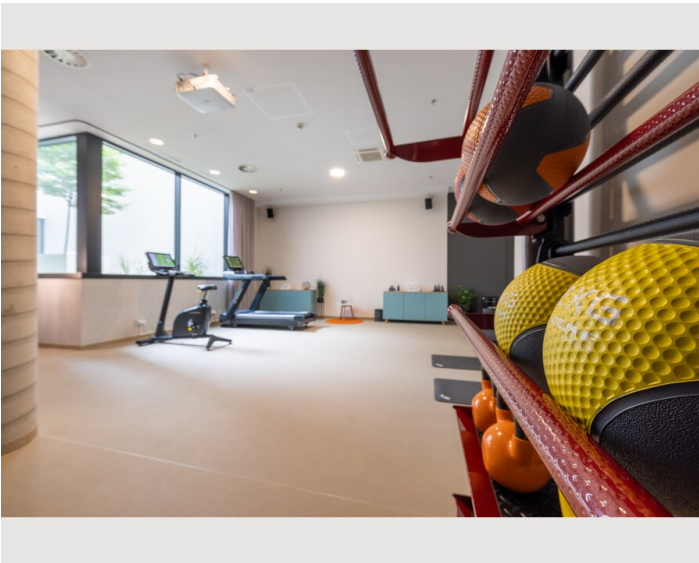
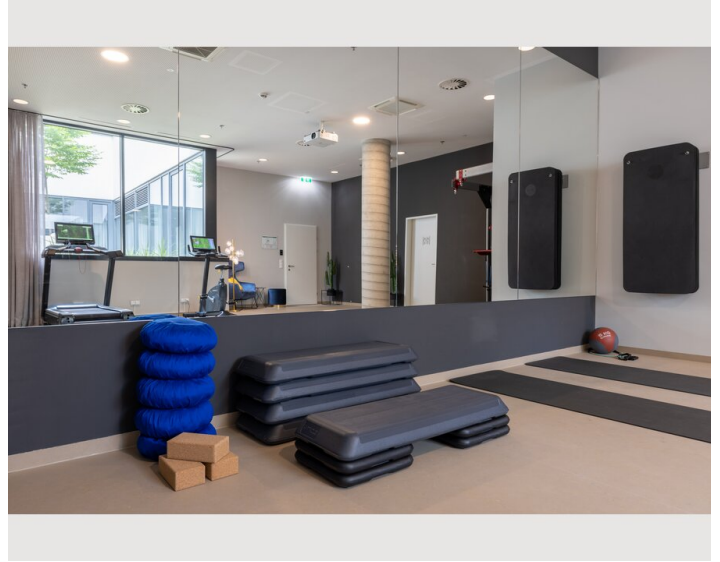
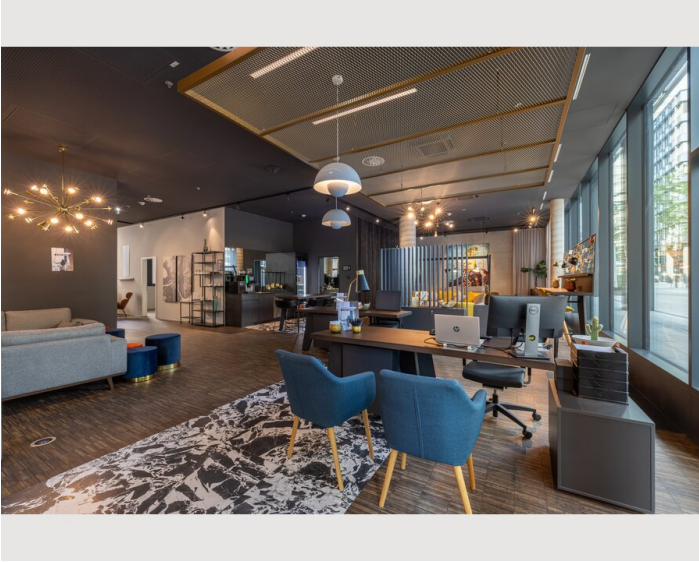
## Informations

- Suitable for construction workers
- Desk/Workplace
- Regular cleaning free of charge
- Smoking not allowed
- Pets on request
- Bicycle room free of charge

## Picture gallery







## Infrastructure

 Walking distance

 Walking distance

Set in Vienna's Favoriten neighbourhood, right opposite Vienna Central Station, you're perfectly placed to move around the city. Jump on public transport to reach Vienna's best-known sights, or wander to nearby Belvedere Palace and the Swiss Garden. With major company headquarters close by, it's just as convenient for business as it is for exploring the city's rich history, culture and architecture.

## Location

