



STUDIO APARTMENT, 1120 VIENNA

Studio Schönbrunn

Object number: OFIM1

[View and rent online](#)

Period	17/05/ - 17/06/2026
Number of persons	2
Total incl. VAT.	€ 1.518,07
Security deposit	€ 1.200,00

Quietly located studio Schönbrunn in Meidling, 45 m². The studio apartment is situated on a quiet corner near Meidlinger Hauptstraße, on the 1st floor with an elevator. Train station, subway (U4/U6), and excellent infrastructure are all within walkin



Living space

45m²



Maximum occupancy

2 Persons



Complete accommodation [?]

1 Private bathroom 1 Living-Sleepingroom



1. floor

Elevator available



Check-in

12:00 - 06:00 Clock



Check-out

12:00 - 18:00 Clock

Sleeping options

Living & Sleeping



1x Double bed (1,80 m x 2 m)

Description of accommodation

The very quiet, north-facing apartment consists of a large living and sleeping area, a fully equipped adjoining kitchen, an entrance hall, a small storage room, as well as a separate toilet and a bathroom with both a shower and a bathtub.

Equipment & Features

Basic equipment

- TV
- Community dryer
- Vacuum cleaner
- Community washing machine
- Private toilet
- Cleaning utensils

First supply

- Toilet paper
- Nespresso capsules
- shampoo

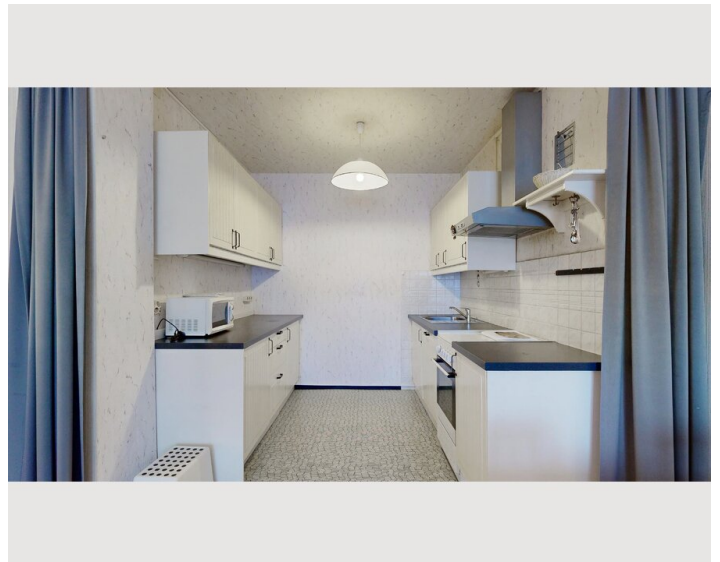
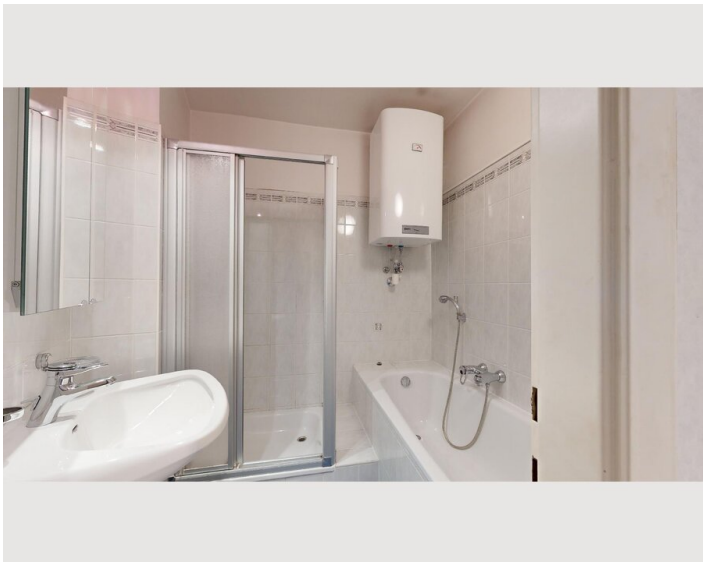
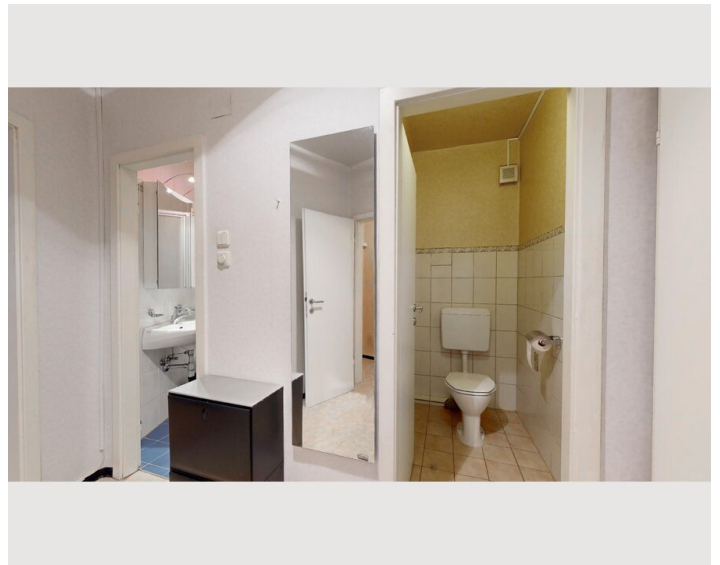
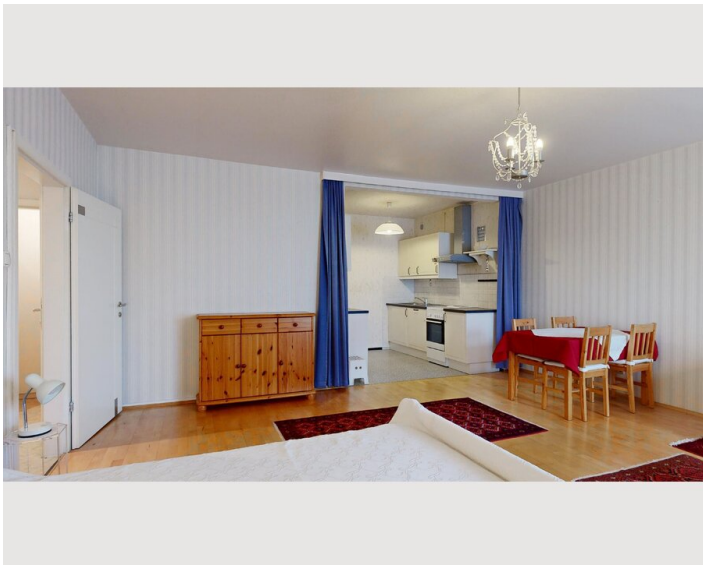
Kitchen

- Private kitchen
- Glasses/Tableware
- Dishwasher
- Cooking utensils
- Espresso machine
- Microwave

Informations


- Smoking not allowed
- Pets on request
- Bicycle room free of charge
- Short-term parking zone subject to a charge
- Regular cleaning at extra cost

Picture gallery






Infrastructure

 Meidling Railway Station, Busstation in front of the House or per feet (8min)

 Hofer (Aldi) / Lidl / Billa / Spar (5min by foot)

 Vienna Airport, reachable via Meidling Railway Station in 40min directly.

The apartment benefits from excellent infrastructure thanks to its proximity to Meidlinger Hauptstraße. Meidling train station and the U4 and U6 subway lines are within walking distance (max. 10 minutes); numerous supermarkets (Hofer/Aldi, Lidl, Spar, Billa) are easily accessible on foot; doctors and banks are also just 5 minutes away.

Location

