



STUDIO APARTMENT, 1150 VIENNA

Central Gardenapartment#2

Object number: POLO2

[View and rent online](#)

Bright studio apartment in charming Viennese period style in the 15th district: Spacious, light-filled apartment with a combined living and sleeping area, bathroom, and furnished kitchen.

Period	17/05/ - 17/06/2026
Number of persons	2
Total incl. VAT.	€ 2.236,64
Security deposit	€ 1.700,00



Living space

35m²



Maximum occupancy

4 Persons



Complete accommodation

1 Private bathroom 1 Living-Sleepingroom



1. floor



Check-in

15:00 - 00:02 Clock



Check-out

00:01 - 11:03 Clock

Sleeping options

Living & Sleeping



4x Single bed

Description of accommodation

Well-maintained apartment for short-term rent: This bright studio apartment in charming Viennese period style stands out above all for its high and light-filled rooms. The spacious combined living and sleeping area of around 30 m² is furnished with four single beds, a large wardrobe, and a dining table for four people.

The small, fully equipped kitchen includes an oven, a large refrigerator with freezer, and a washing machine. The slightly smaller bathroom features a narrow shower as well as a toilet. In addition, a beautiful garden with cozy seating is available for shared use.

Equipment & Features

Basic equipment

- Garden sharing
- Washing machine
- Towels
- Vacuum cleaner
- Cleaning utensils
- Internet/Wifi
- Bedclothes
- Private toilet
- Iron & ironing board
- Hairdryer

First supply

- Toilet paper
- Soap
- shampoo

Kitchen

- Private kitchen
- Glasses/Tableware
- Microwave
- Cooking utensils
- Filter coffee

Informations

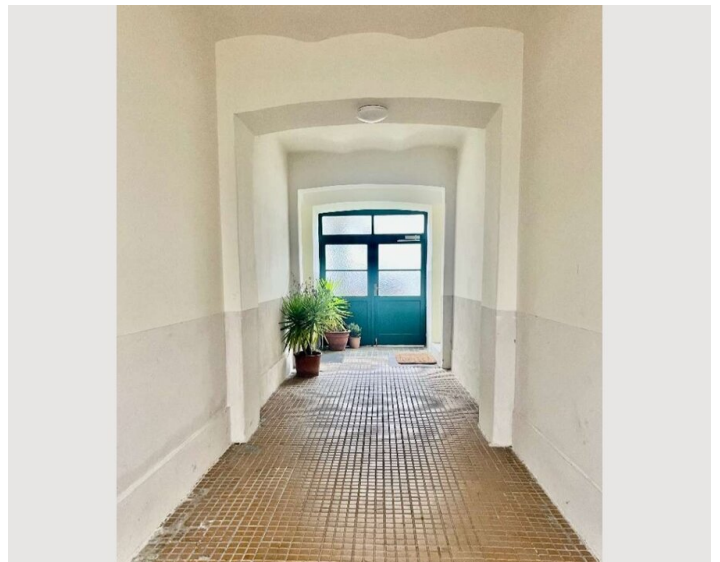
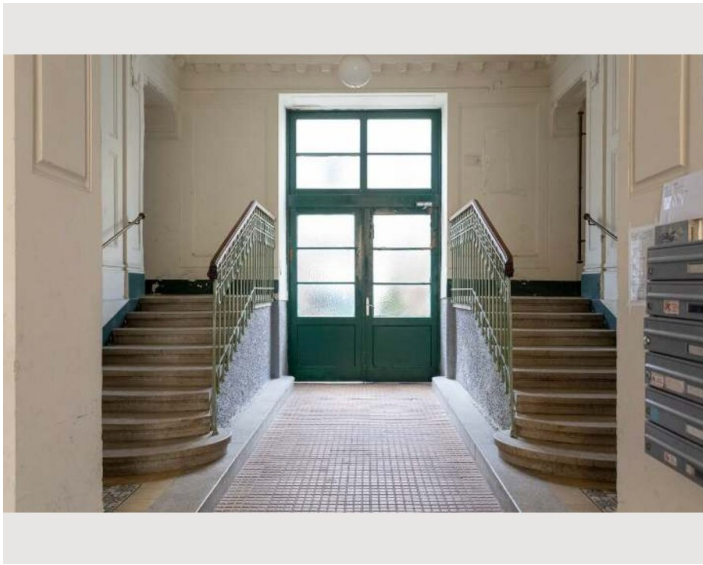
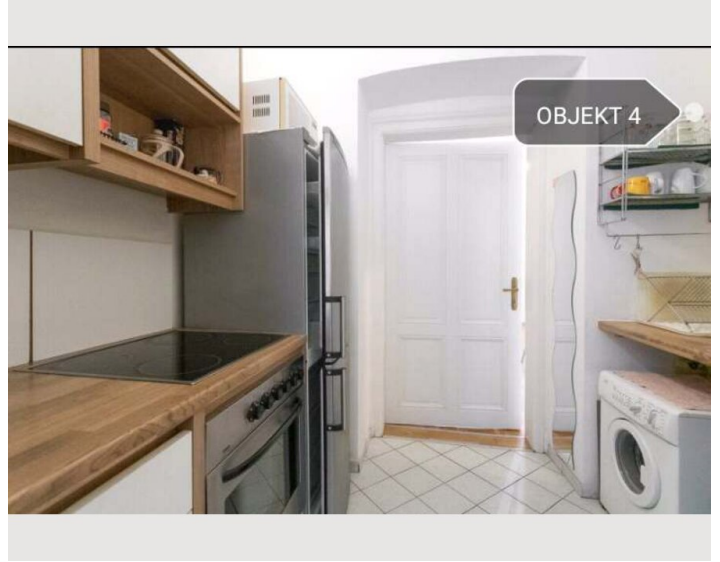
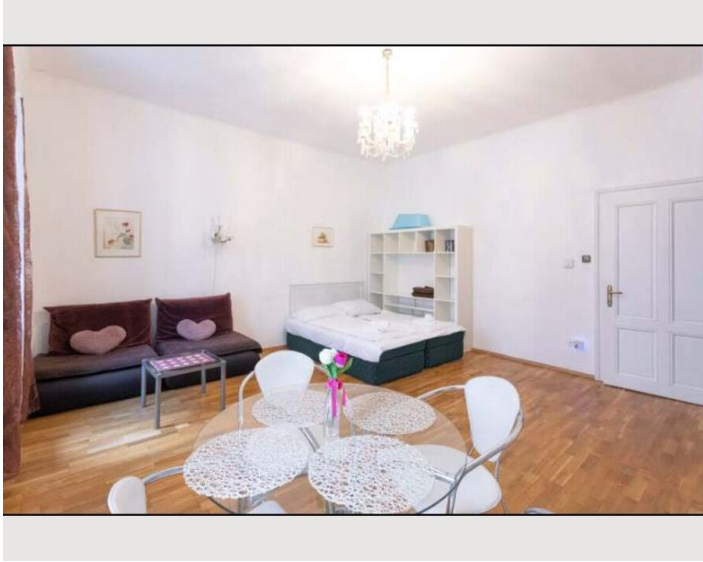
- Suitable for construction workers
- Smoking not allowed
- Desk/Workplace
- Pets forbidden
- Bicycle room free of charge
- Suitable for children
- Short-term parking zone subject to a charge
- Private entrance
- Regular cleaning free of charge

Additional services

- Parkingpace nearby to rent

All prices are gross per month - billing is done directly with the lessor.

Picture gallery





Infrastructure

📍 Subway U4/ U6 Station Längenfeldgasse

🕒 5 minutes on foot

🚆 Trainstation Westbahnhof

🕒 40 minutes by U4 + train

Excellent infrastructure, everything within a 5-minute walk:

Subway

Supermarkets

Bakery, open from 6:00 a.m.

Schools, kindergarten

Pharmacy

Restaurants and cafés

Location

