



2 ROOM APARTMENT, 5061 ELSBETHEN

## **NEW: Premium apartment, 5 min walk to Red Bull Base, fully equipped, great transport connections (bus/train/bike), bike included.**

Object number: IUGQ1

[View and rent online](#)

Brand new: premium 2-room apartment in Elsbethen, 5 minutes' walk to Red Bull Base. 55 m<sup>2</sup>, 2 balconies, 50 MBit Wi-Fi, Miele washing machine, Smart TV, bike included. Excellent amenities right on your doorstep.

<b>Period</b>	28/06/ - 28/07/2026
<b>Number of persons</b>	2
<b>Total incl. VAT.</b>	€ 2.686,90
Security deposit	€ 2.100,00



### **Living space**

55m<sup>2</sup>



### **Maximum occupancy**

4 Persons



### **Complete accommodation**

1 Private bathroom 1 Separated bedroom



### **1. floor**



### **Check-in**

15:00 - 19:00 Clock



### **Check-out**

08:00 - 10:00 Clock

## Sleeping options

### Sleeping room



1x Double bed (1,60 m x 2 m)



1x Sofa bed (2 persons)

## Description of accommodation

Welcome to the south of Salzburg. This high-quality, first-occupancy 2-room apartment has everything you need for a smooth, hassle-free arrival: bed linen, towels, a fully equipped kitchen, 50 Mbit Wi-Fi, a Miele washing machine with private dryer, a 55" Smart TV with Bluetooth soundbar, plus an oven, stove, Nespresso machine, microwave, dishwasher, toaster, and fridge-freezer. A hairdryer, cordless vacuum, and iron with ironing board are also provided.

The Red Bull headquarters (Red Bull Base) is just a 5-minute walk away. FH Salzburg Campus Urstein is reachable by bus line 160 in around 25 minutes or by car in 8 minutes. A supermarket, pharmacy, bank, bakery, and hairdresser are all within easy walking distance. A bicycle is included free of charge, and street parking is available at no cost with no time restriction.

Apartment overview: 55 m<sup>2</sup> on the first floor. Open-plan living and dining area (22 m<sup>2</sup>) with sofa bed, dining table, and 55" Smart TV. Separate bedroom (18 m<sup>2</sup>) with an upholstered double bed (160x200) and spacious wardrobe. Modern bathroom with shower and WC. South-facing loggia (5 m<sup>2</sup>) and west-facing balcony (3 m<sup>2</sup>) provide outdoor space in two directions.

Ideal for Red Bull employees commuting on foot or by bike, FH Salzburg students and lecturers, seasonal staff of the Salzburg Festival, and business travelers on projects in Salzburg or the Salzkammergut. Minimum rental period is 1 month, maximum 6 months. The monthly rent is fully all-inclusive: electricity, heating, internet, and all ancillary costs covered.

## Equipment & Features



### Basic equipment

- Balcony
- Internet/Wifi
- TV
- Community dryer
- Towels
- Parking on the road without time limit without any cost
- Iron & ironing board
- Hairdryer
- Loggia
- Music system/docking station
- Private washing machine
- Bedclothes
- Private toilet
- Vacuum cleaner
- Cleaning utensils



### First supply

- Toilet paper
- Soap
- shampoo
- Nespresso capsules



### Kitchen

- Private kitchen
- Glasses/Tableware
- Dishwasher
- Cooking utensils
- Espresso machine
- Microwave

## Informations

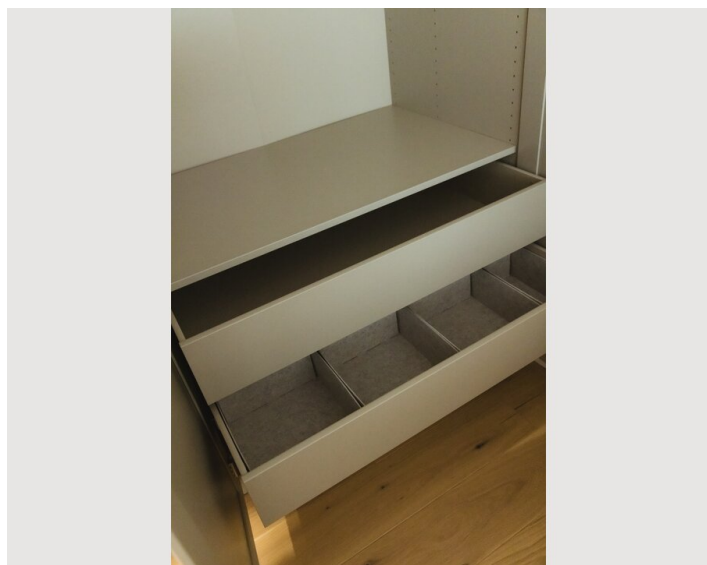
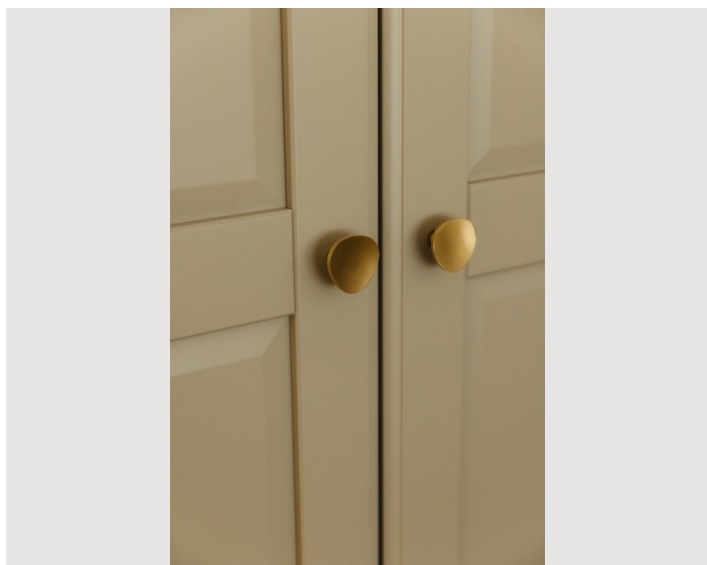
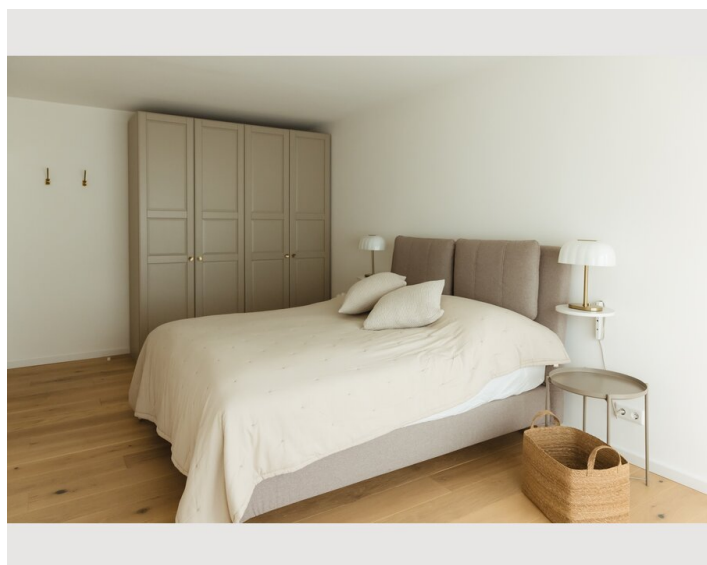
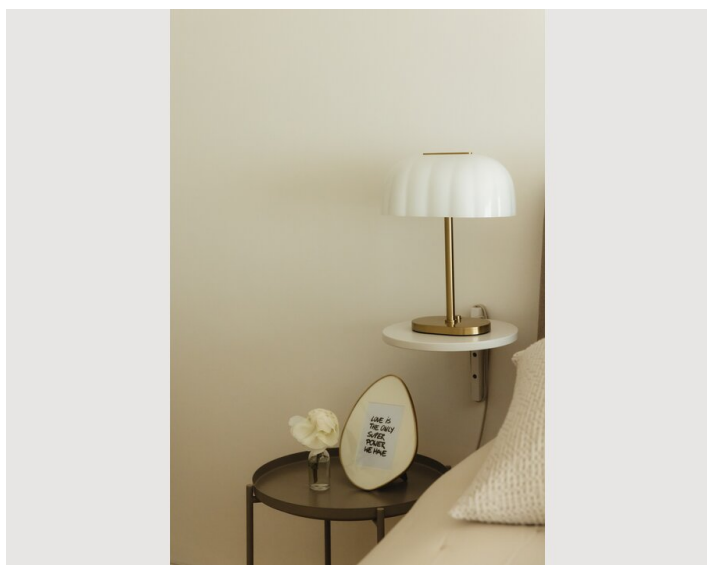
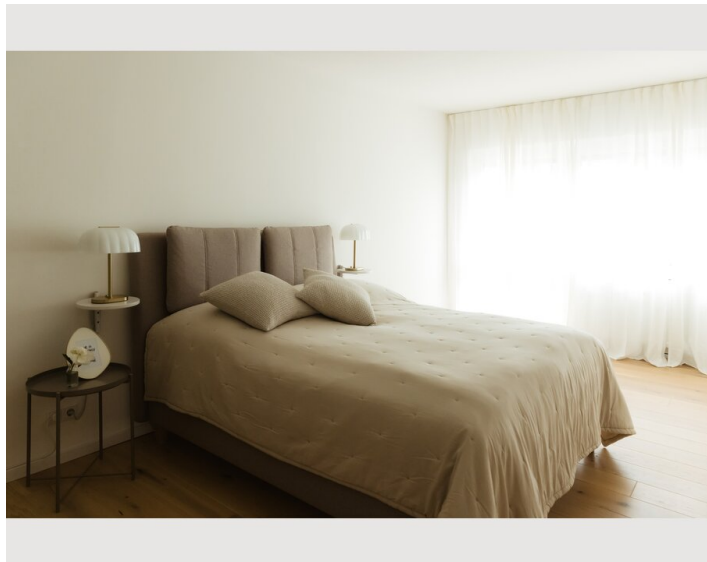
- Smoking not allowed
- Regular cleaning at extra cost
- Pets on request
- Bicycle room free of charge

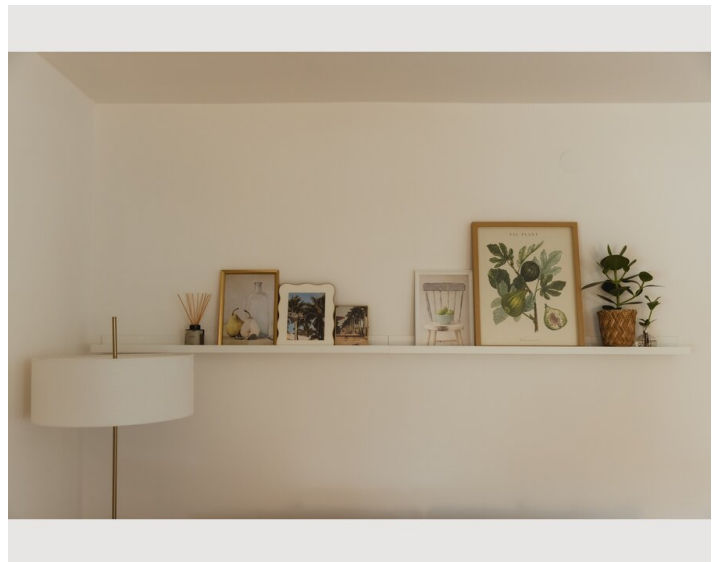
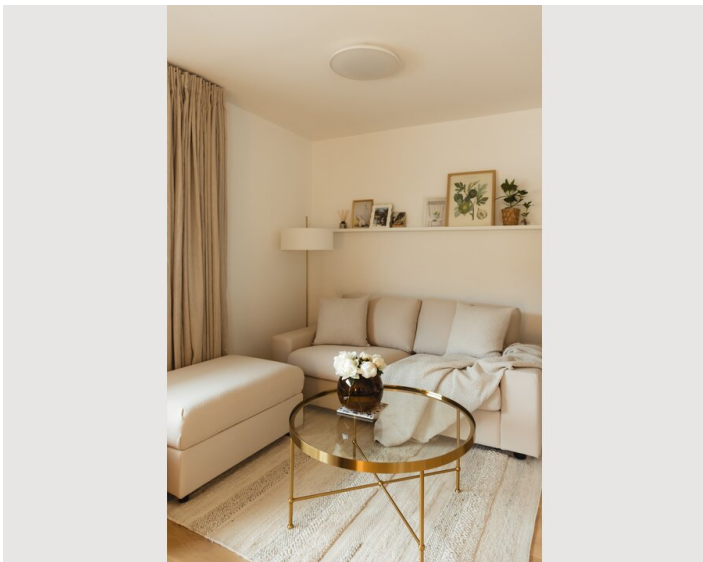
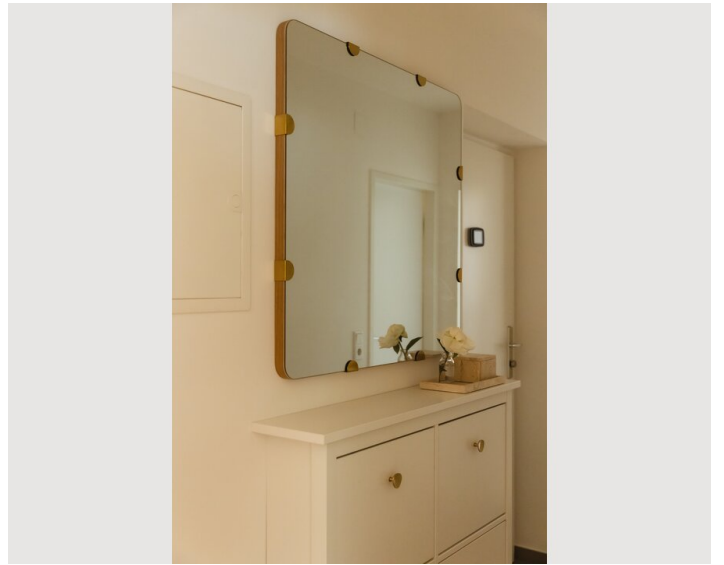
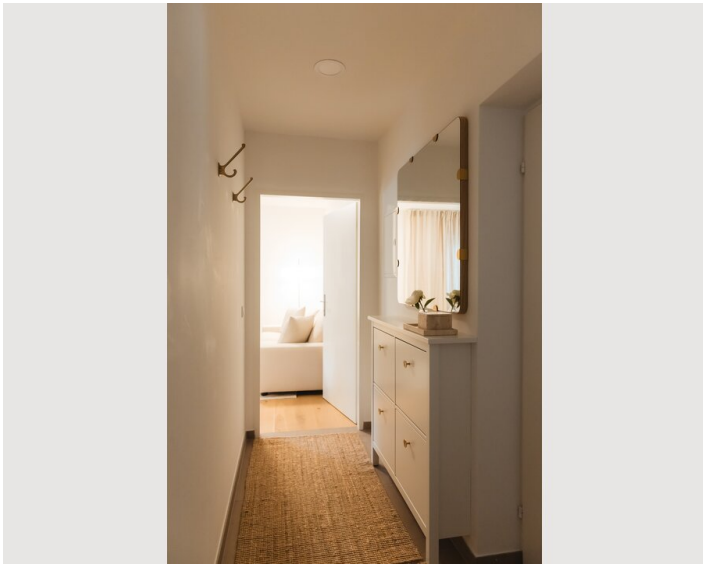
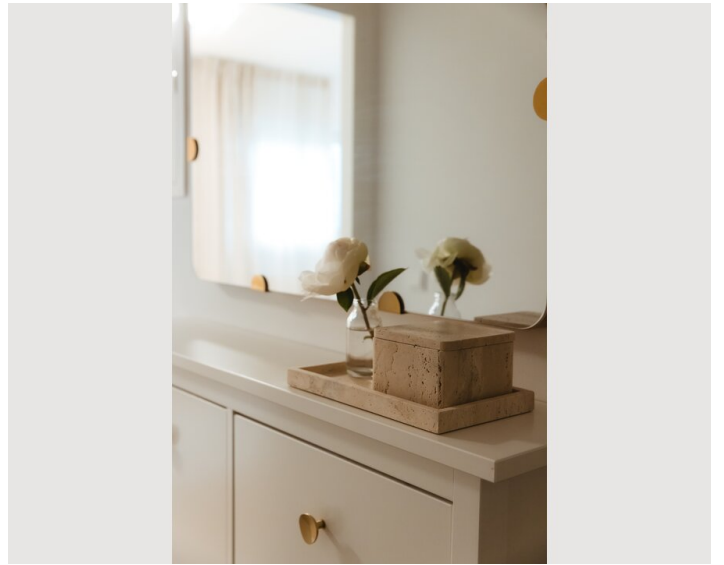
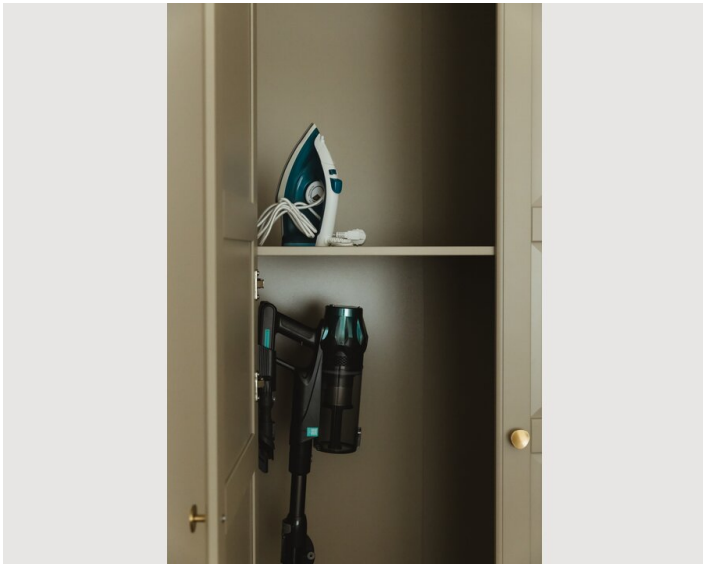
## Additional services

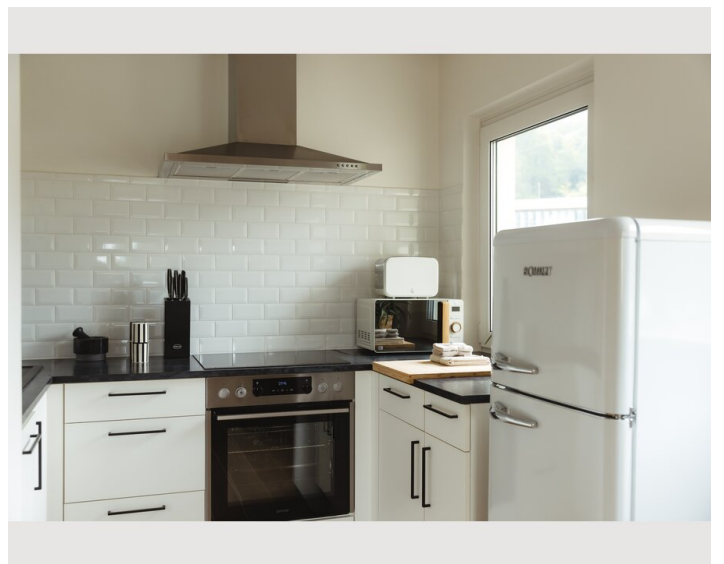
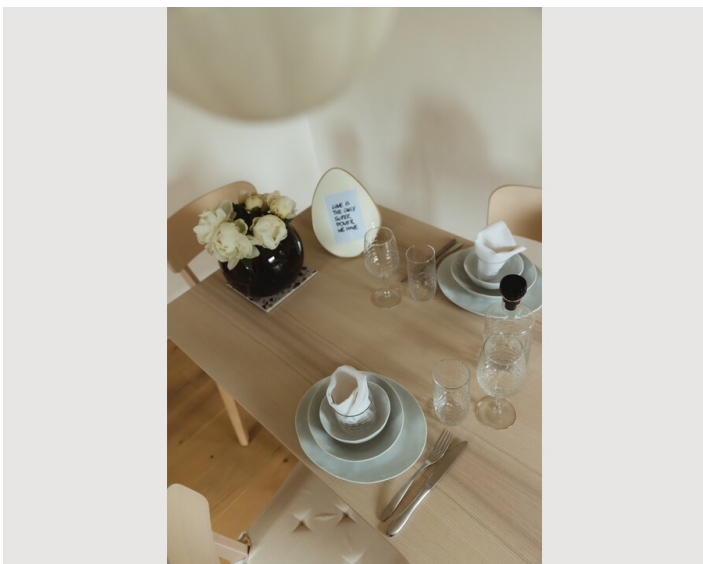
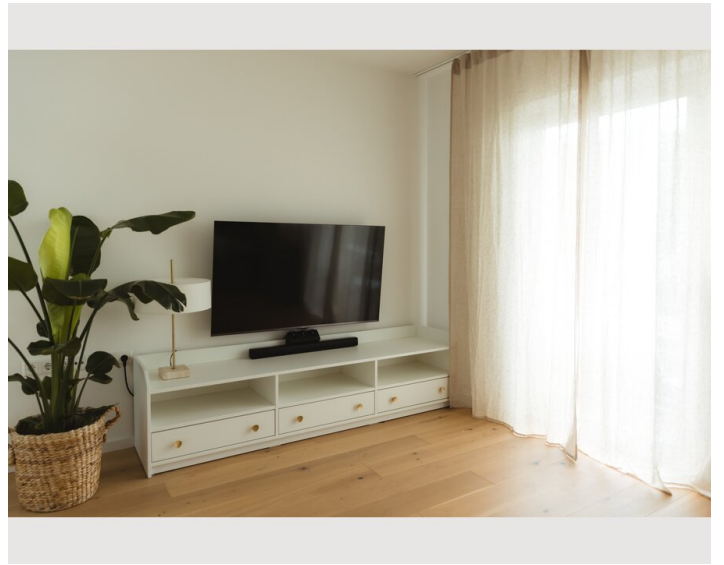
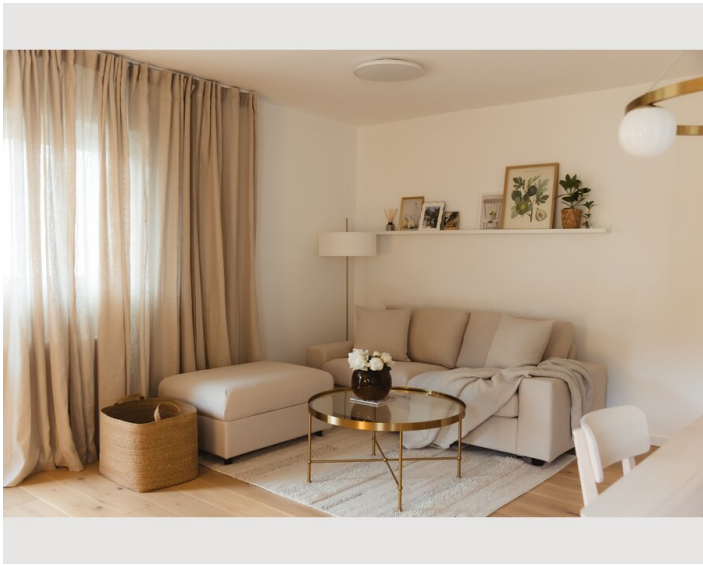
- Mountainbike can be used for free (€ 0,00)

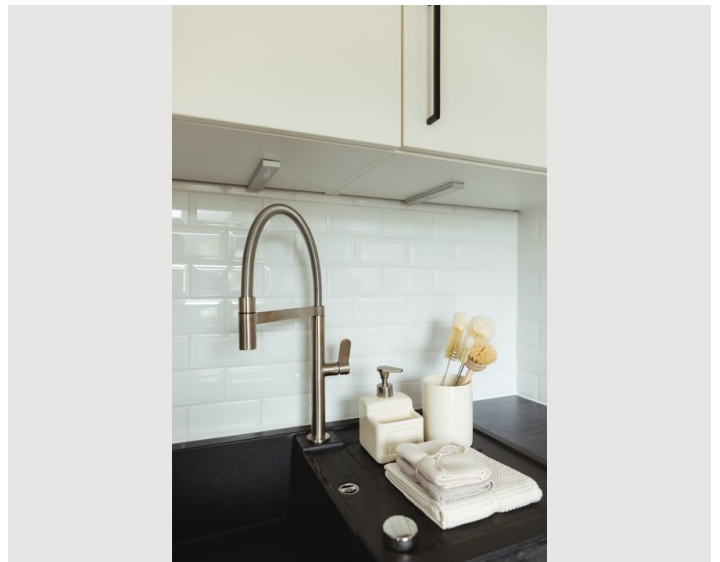
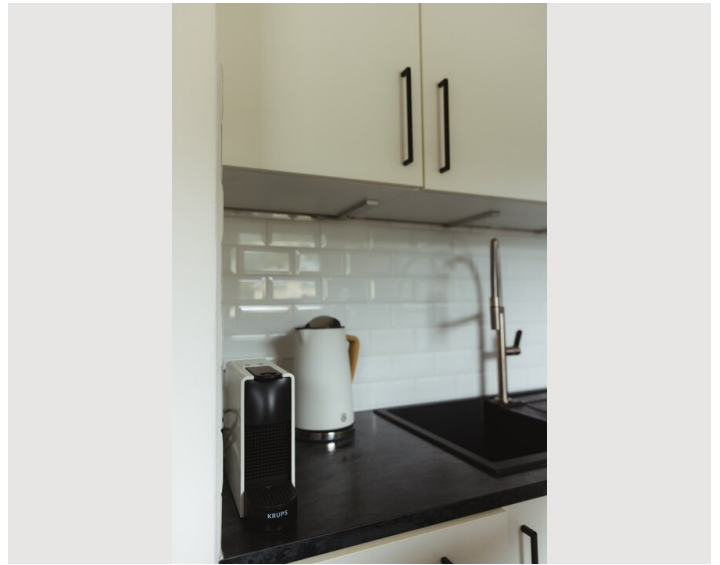
All prices are gross per month - billing is done directly with the lessor.

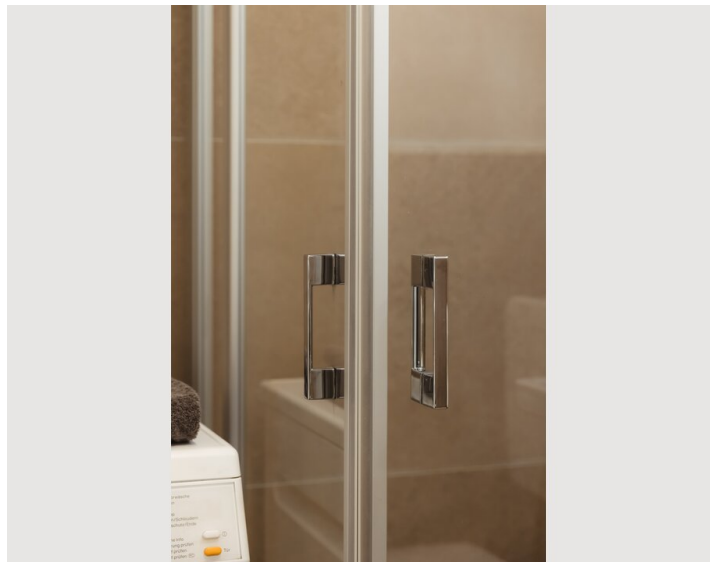
## Picture gallery


















## Video

[Goto Video](#)



## Infrastructure

-  3 bus lines (160, 165, 7) right in front. Direct line Salzburg main station – Elsbethen – Puch (FH) – Hallein, every 30 min
-  S-Bahn S3 (ÖBB) from Salzburg-Aigen station reachable in 5 min by bus. Connections to Salzburg main station, Hallein, Golling, Berchtesgaden.
-  Salzburg Old Town (UNESCO World Heritage) in 10 min by car or 15 min by city bus line 3. Festival halls, Getreidegasse, Mozart's birthplace.
-  SPAR Aigen, Bakery, café, pharmacy, gas-station within walking distance. Hofer and Billa in 10 min.
-  Airport Salzburg in 25 min by car

---

The location in Elsbethen is well-suited for professionals and expats who value convenience. A Spar supermarket is just steps away, and several restaurants as well as a bakery are within easy walking distance – perfect for busy workdays. The Elsbethen Glasenbach bus stop is only a short walk from the apartment, providing quick and reliable access to Salzburg. The Salzburg-Süd suburban rail terminus is around 700 m away, adding further flexibility for commuters. The apartment is particularly practical for those working at the Red Bull campus nearby, with the route easily manageable by bicycle – which is included with the rental.

## Location

