



2 ROOM APARTMENT, 1200 VIENNA

## Charming, fully furnished 2-bedroom apartment near downtown in the 20th district

Object number: WIPQ2

[View and rent online](#)

A furnished 2-room apartment of approximately 38.5 m<sup>2</sup> is available for rent in the 20th district. The apartment is ideal for students, working professionals, couples, or as a shared apartment, and offers everything you need for your stay in Vienna.

<b>Period</b>	25/05/ - 25/06/2026
<b>Number of persons</b>	2
<b>Total incl. VAT.</b>	€ 1.723,88
Security deposit	€ 1.300,00



### Living space

39m<sup>2</sup>



### Maximum occupancy

3 Persons



### Complete accommodation <sup>?</sup>

1 Private bathroom 2 Shared bedrooms



### 5. floor

Elevator available



### Check-in

15:00 - 00:05 Clock



### Check-out

00:05 - 11:00 Clock

## Sleeping options

### Living & Sleeping 1



1x Double bed (1,60 m x 2 m)

### Living & Sleeping 2



1x Sofa bed (1 person)

## Descripton of accommodation

A fully furnished 2-bedroom apartment of approximately 38.5 m<sup>2</sup> is available for rent on the popular Marchfeldstraße in Vienna's 20th district. The apartment is ideal for students, professionals, couples, or as a shared apartment and can be rented on a flexible basis for a minimum of 1 month up to a maximum of 2 years. Wi-Fi included.

### Floor Plan (2-room apartment)

- Entryway
- Separate bathroom and toilet
- Separate living room with adjoining kitchen
- 1 bedroom, each with a double bed

The apartment is quiet, furnished, and functionally designed, offering a pleasant living atmosphere despite its central location.

### Prime Location & Excellent Transportation Links

The apartment stands out for its excellent infrastructure and transportation links:

- U6 Dresdner Straße station is about a 6-minute walk away
- S-Bahn with direct airport connection is about a 9-minute walk away (approx. 40-minute airport transfer each way)
- Fast connection to Vienna's city center (20 min by public transit), trams 2, 12, 31
- Excellent car access via the Danube Embankment Highway and Brigittenauer Bridge

Particularly attractive for students: The FH Technikum Wien is practically right around the corner and is easily accessible on foot.

Downtown, the Danube Island, and numerous universities and office locations are also within easy reach—there are also numerous bike paths right outside the door

### Shopping & Leisure

The following are located in the immediate vicinity:

- Shopping centers (Brigitta Passage), supermarkets, bakeries, drugstores, and pharmacies
- Restaurants, cafés, and snack bars
- Gyms and local shops
- Recreational areas along the Danube and on the Danube Island

The location offers the perfect combination of urban living, excellent infrastructure, and peaceful residential surroundings.

Optional: Parking Spaces - Up to 2 parking spaces in the building's garage can be rented upon request and subject to availability.

Price: €130 per month per parking space.

### Ideal for:

- Students & those starting a shared apartment
- Expats & project staff
- People with a temporary stay in Vienna
- Families or couples needing flexible lease terms.

## Equipment & Features



### Basic equipment

- Internet/Wifi
- Private washing machine
- Towels
- Private parking space
- Hairdryer
- TV
- Bedclothes
- Private toilet
- Garage



### First supply

- Toilet paper
- Soap
- Fridge filling on request
- shampoo
- Nespresso capsules



### Kitchen

- Private kitchen
- Glasses/Tableware
- Dishwasher
- Cooking utensils
- Filter coffee

## Informations

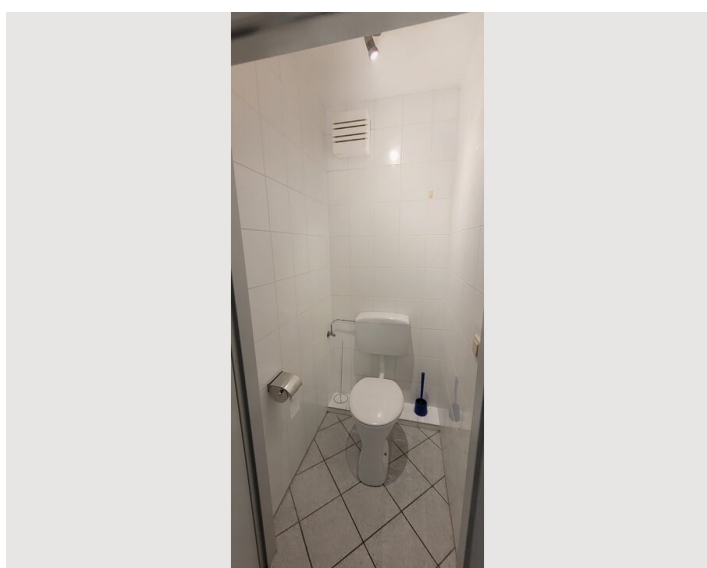
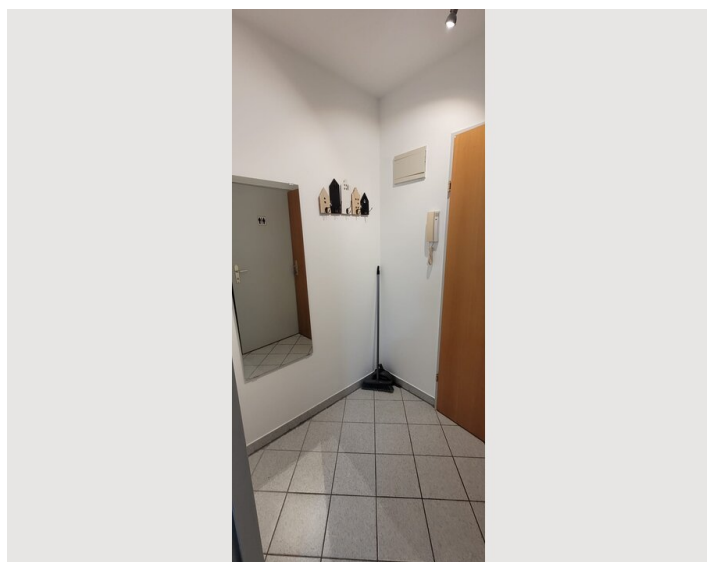
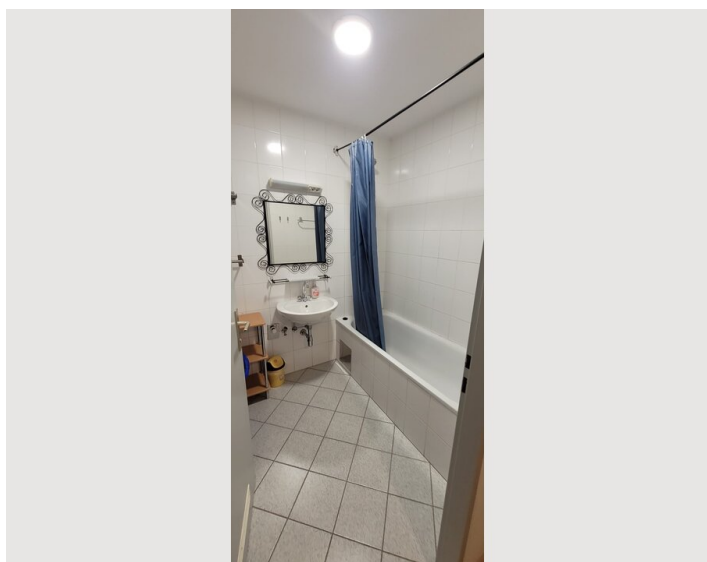
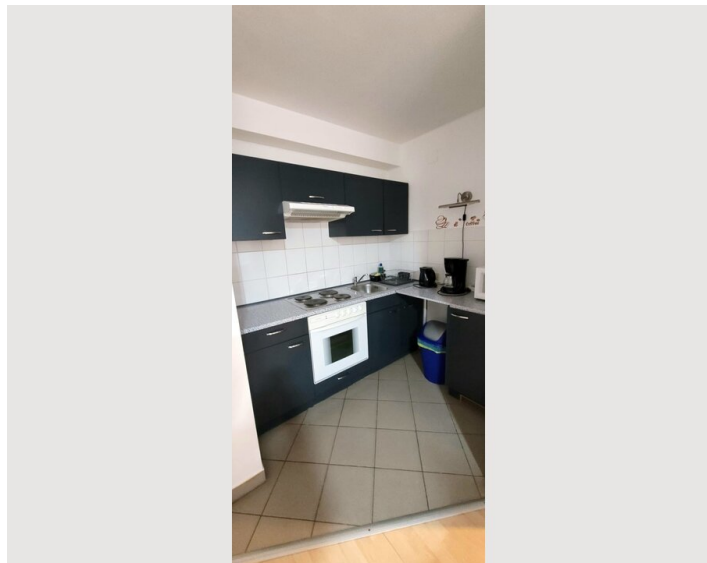
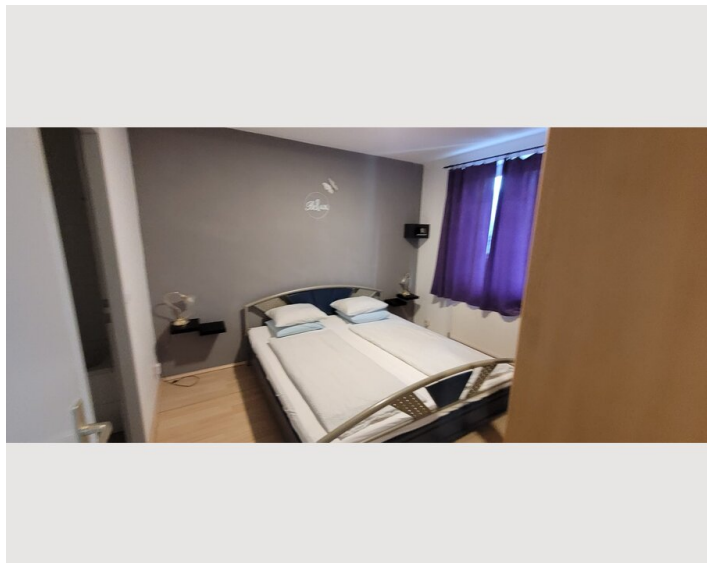
- Suitable for construction workers
- Smoking not allowed
- Regular cleaning at extra cost
- Suitable for children
- Pets on request
- Bicycle room free of charge

## Additional services


- Up to 2 parking spaces can be reserved in the on-site garage (subject to availability) (€ 130,00)

All prices are gross per month - billing is done directly with the lessor.


## Picture gallery




## Infrastructure

 ~ 40 minutes by direct train

 ~ 20 minutes by tram line 2

 ~ 10 minutes by foot to train station "Handelskai"

 ~ 50m from the apartment

For information regarding the close infrastructure and connectivity look at the detailed description

## Location

