



3 ROOM APARTMENT, 5110 OBERNDORF

## 3 room flat

Object number: GFPE1

[View and rent online](#)

Very bright and cozy apartment in an absolutely central location in Oberndorf, yet very quiet.

<b>Period</b>	10/06/ - 10/07/2026
<b>Number of persons</b>	2
<b>Total incl. VAT.</b>	€ 1.940,00
<b>Security deposit</b>	€ 1.500,00



### Living space

61m<sup>2</sup>



### Maximum occupancy

5 Persons



### Complete accommodation <sup>?</sup>

1 Private bathroom 2 Separated bedrooms 1 Living-Sleepingroom



### 2. floor



### Check-in

13:00 - 20:00 Clock



### Check-out

09:00 - 12:00 Clock

## Sleeping options

### Bedroom 1



1x Double bed (1,80 m x 2 m)

### Bedroom 2



1x Single bed



1x Children/baby bed

### Living & Sleeping



1x Double bed (1,60 m x 2 m)

### Descripton of accommodation

The apartment is located on the 2nd floor, is very bright, cozy and functionally furnished, and is very well suited for 2 – 5 persons. The curved open staircase and the mansard roof give it a special flair.

It is divided into a bedroom with a double bed, a single room, a living room with a pull-out couch, a kitchen, and a bathroom with WC.

The kitchen is equipped with an electric stove including oven, dishwasher, sink, refrigerator, microwave, coffee maker (Senseo), and kettle. Tableware, glasses, and kitchen utensils are also available.

## Equipment & Features



### Basic equipment

- Internet/Wifi
- Community washing machine
- Bedclothes
- Private toilet
- Vacuum cleaner
- TV
- Community dryer
- Towels
- Parking on the road without time limit without any cost
- Hairdryer



### First supply

- Toilet paper



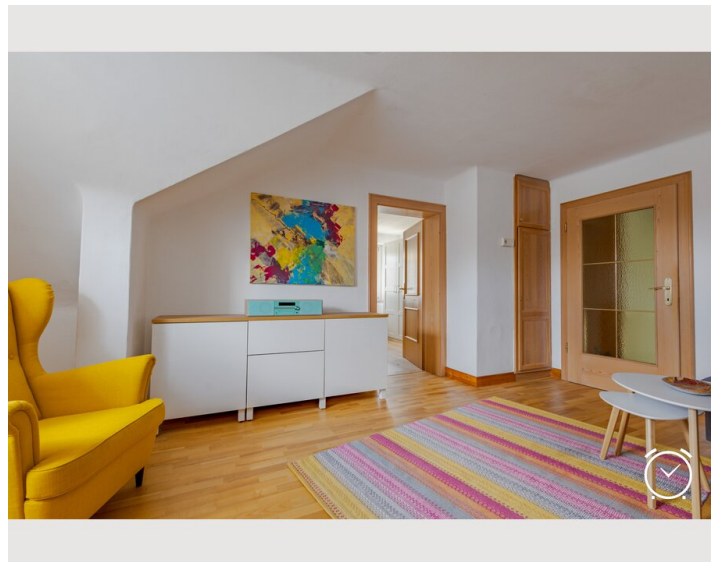
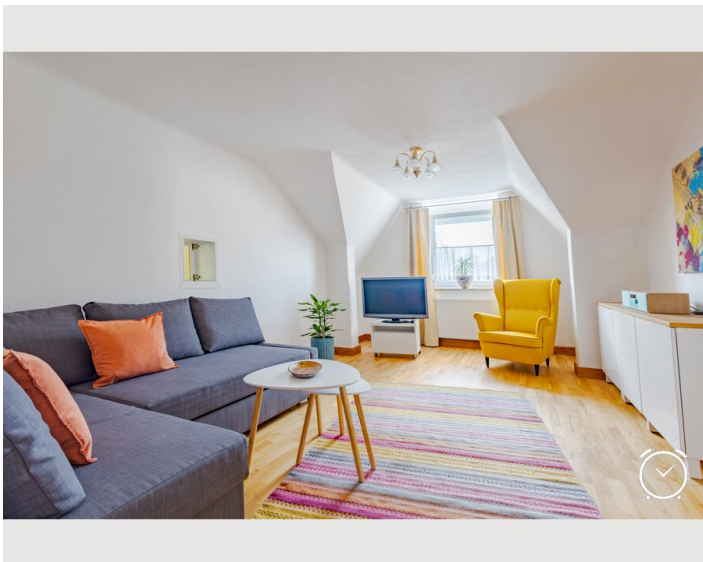
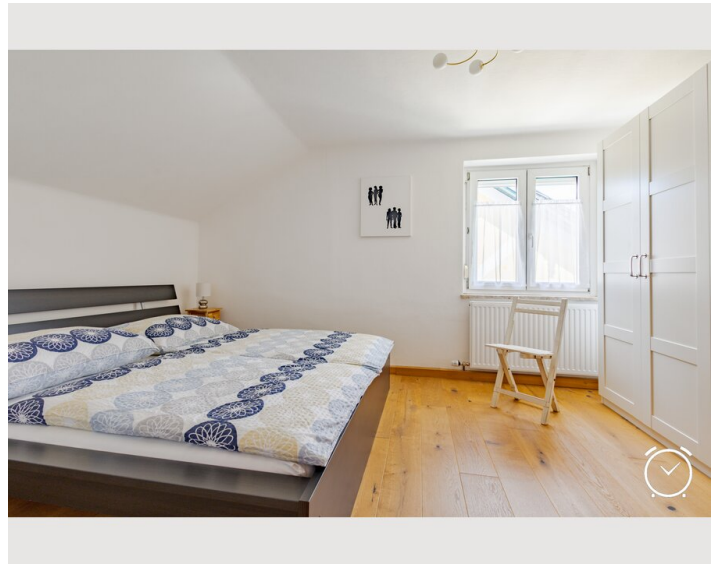
### Kitchen

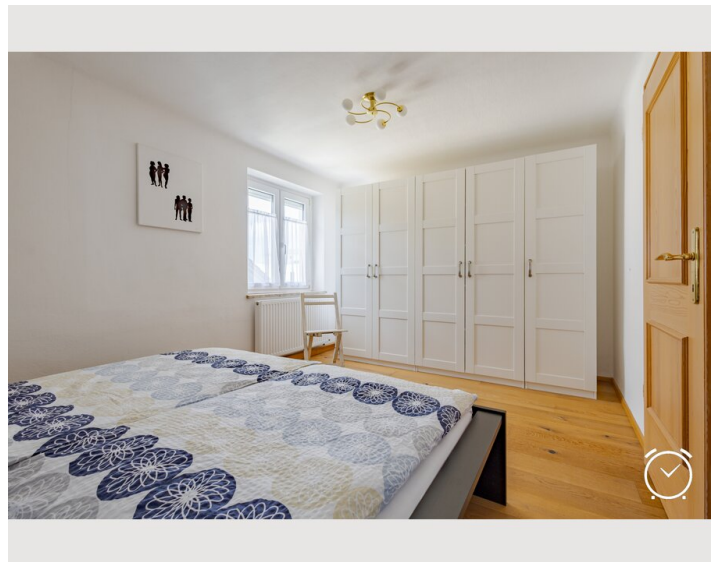
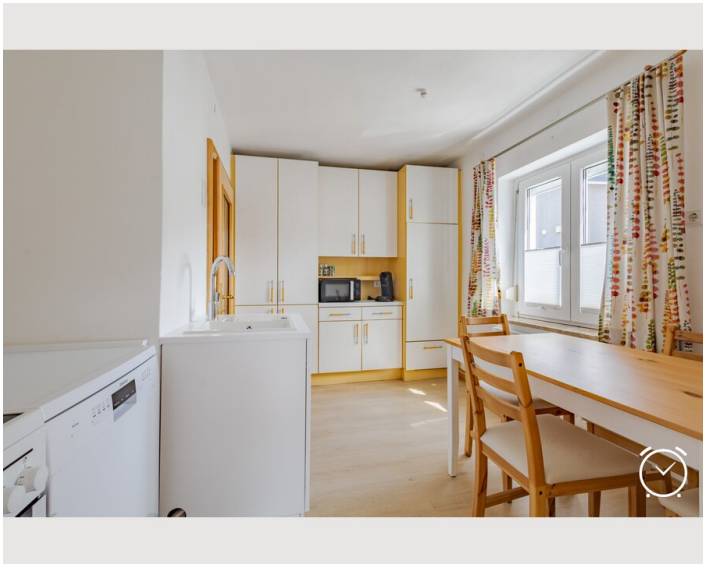
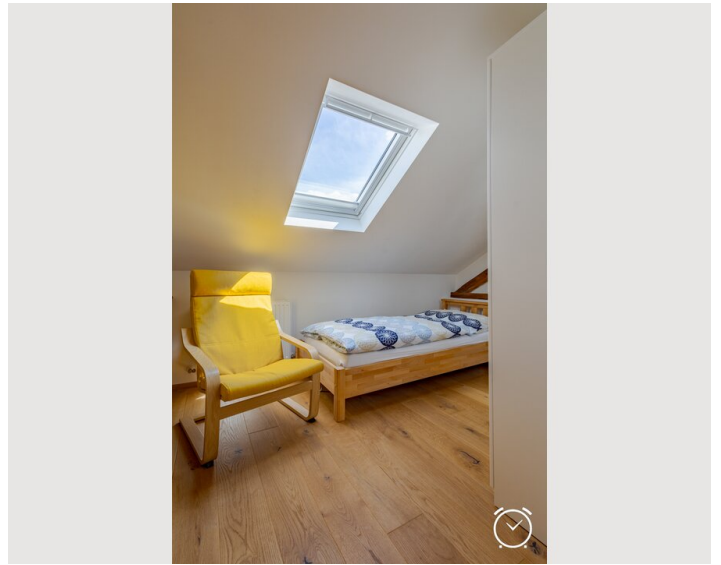
- Private kitchen
- Glasses/Tableware
- Dishwasher
- Cooking utensils
- Espresso machine
- Microwave

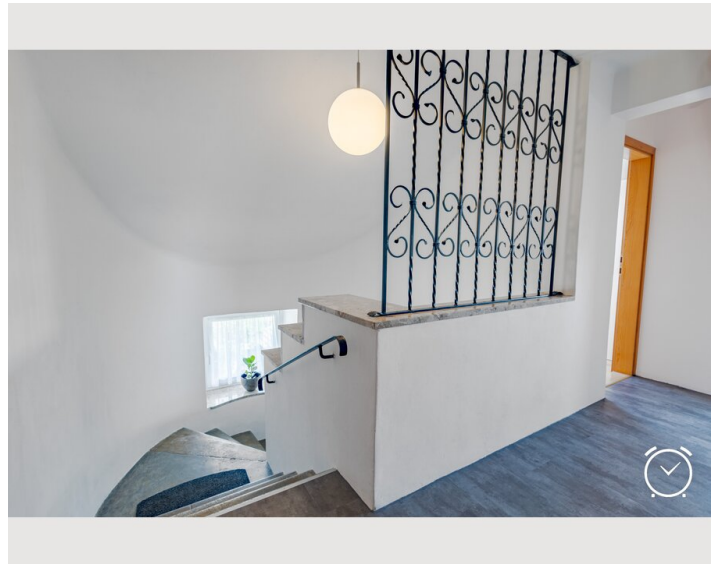
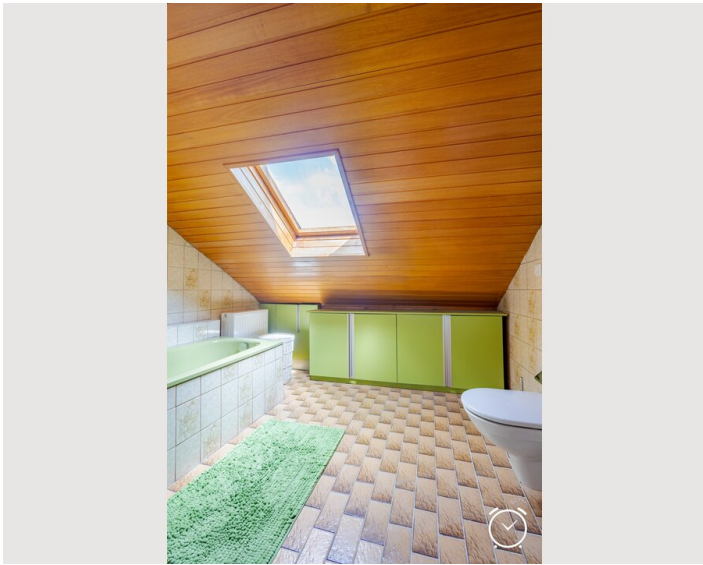
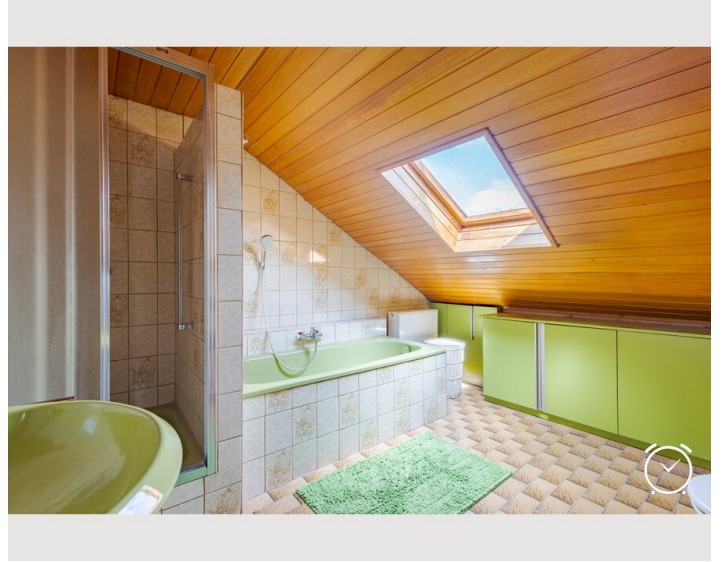
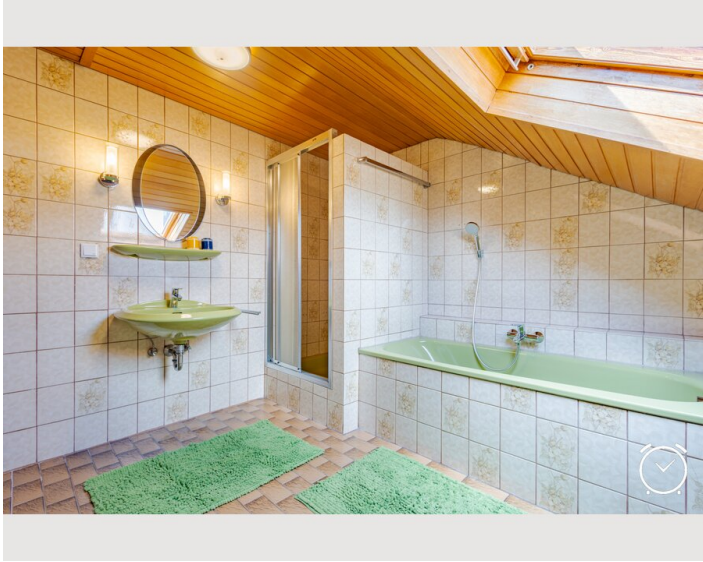
## Informations

- Suitable for construction workers
- Smoking not allowed
- Pets forbidden
- Suitable for children
- Free short-term parking zone
- Bicycle room free of charge

## Picture gallery








## Video

[Goto Video](#)



## Infrastructure

 5 minutes on foot

---

Shopping facilities and other important amenities are all within walking distance (supermarkets, bakeries, banks, restaurants, doctors, and pharmacy).

Both train stations in Oberndorf are just a few minutes' walk away (3 – 5 min.). With the S1, Salzburg Local Railway, you can reach Salzburg traffic-free within 25 minutes. The first train connection starts at 04:57, with the last return from Salzburg at 23:57. To get night owls home safely on weekends, there are train connections until 02:27.

Towards Bürmoos/Lamprechtshausen/Ostermiething, you can depart from 05:34. (<https://fahrplan.salzburg-verkehr.at>).

Oberndorf is located in the northern Flachgau, directly on the border with Bavaria, separated only by the Salzach river and connected by one of the most beautiful bridges in Europe. From here you can set off in any direction for leisure activities. Whether you want to explore the two "small towns" of Oberndorf and Laufen on foot (the Silent Night Chapel is 10 minutes away), cycle the surrounding area on both sides of the river, or head to the world-class city of Salzburg — everything is possible.

The nearest swimming lake in neighboring Bavaria is reachable by car in 5 minutes, and the lake district (Mattsee, Obertrumer See, Grabensee) is just 20 minutes away. Sonnet 4.6

## Location

