



STUDIO APARTMENT, 1150 VIENNA

sunny studio-apartement near Westbahnhof

Object number: NENC1

[View and rent online](#)

The space is optimally utilized, and the connection to the public transport network is ideal (bus 12A, trams 58 and 60, U3, U4, U6, Westbahnhof 10-minute walk)! Pharmacies, supermarkets, and restaurants are nearby.

Period	21/06/ - 21/07/2026
Number of persons	2
Total incl. VAT.	€ 1.276,20
Security deposit	€ 900,00



Living space

30m²



Maximum occupancy

2 Persons



Complete accommodation [?]

1 Private bathroom 1 Living-Sleepingroom



1. floor

Elevator available



Check-in

08:00 - 17:00 Clock



Check-out

07:30 - 11:00 Clock

Sleeping options

Living & Sleeping



1x Double bed (1,40 m x 2 m)



1x Sofa bed (2 persons)

Description of accommodation

Our modernly furnished and renovated studio apartment in a historic building is optimally laid out:

Hallway with wardrobe,

Storage room with washing machine, open shelving, wardrobe system with clothes rail and drawer

Bathroom with shower (including rain shower), toilet, large sink, mirror, tall cabinet

Spacious living/bedroom (20m²) with a fully equipped, custom-made kitchenette, floor-to-ceiling cabinets for optimal storage, and a kitchen island that also serves as the headboard on the back wall, with a niche for lamps, books, and a mobile phone, visually separating the sleeping area from the kitchen area.

1.40m wide double bed with a comfortable new mattress, and a pull-out sofa bed that provides additional sleeping space.

Extendable dining table so that 4-6 people can comfortably dine together!

Desk with monitor instead of a TV!

Blackout curtains, blinds, parquet flooring or tiles in the bathroom and storage room.

The courtyard is very pleasant; besides parked cars, there are also grassy areas that invite you to relax in the sun.

There is a bicycle storage room in the basement!

Equipment & Features



Basic equipment

- Garden sharing
 - TV
 - Bedclothes
 - Private toilet
 - Cleaning utensils
 - Internet/Wifi
 - Private washing machine
 - Towels
 - Vacuum cleaner
 - Hairdryer
-



First supply

- Toilet paper
-



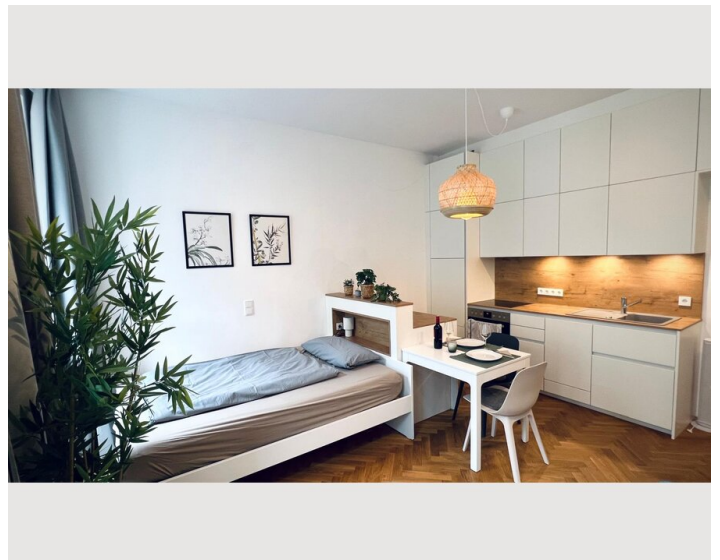
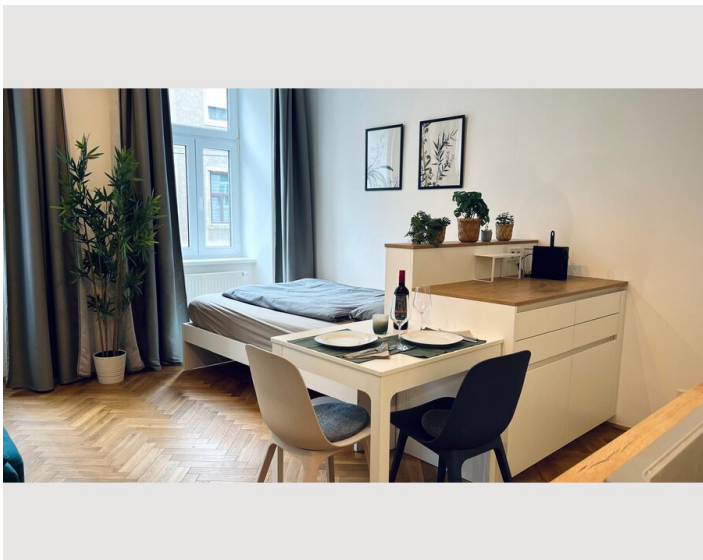
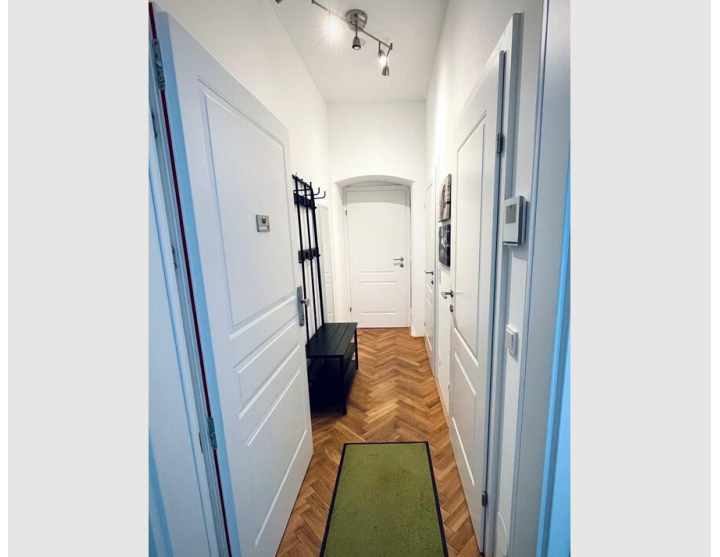
Kitchen

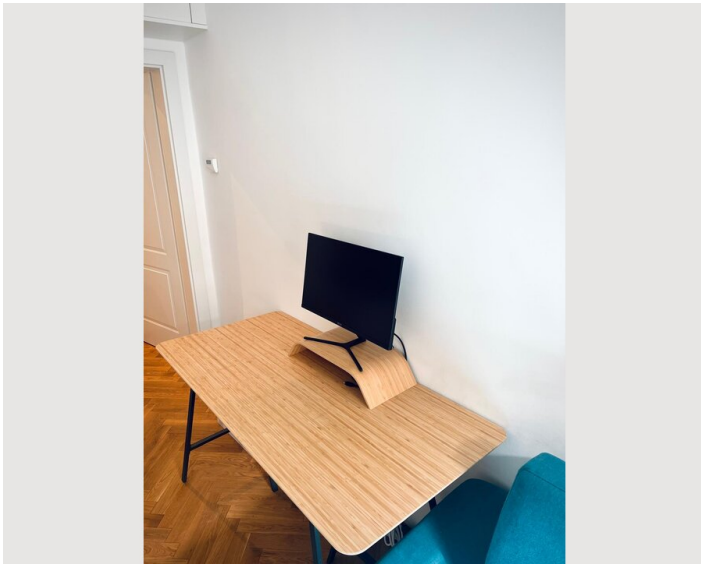
- Private kitchen
- Glasses/Tableware
- Dishwasher
- Cooking utensils
- Espresso machine
- Microwave

Informations

- Not suitable for children
- Short-term parking zone subject to a charge
- Pets forbidden
- Smoking not allowed
- Desk/Workplace
- Bicycle room free of charge


Picture gallery







Infrastructure

 12A just around the corner

 Westbahnhof (Station) 10min. on foot or 2 stops by tram (58, 60)

 The U3, U4 and U6 subway lines are each reachable by tram or on foot in just a few minutes. From there it's only a few stops to the city center (travel time 5-10 minutes).

 just around the corner (Spar, Billa)

15-minute walk to Schönbrunn Palace

The outer Mariahilferstrasse with a bike path to the city center and all kinds of restaurants and shops (Spar and Billa supermarkets, pharmacy) are just around the corner!

Distance to public transport:

Bus 12A: 50m

Trams 58, 60: 286m

U3 subway: 800m

U4 subway: 1.1km

U6 subway: 800m

Location

