



2 ROOM APARTMENT, 5061 ELSBETHEN

## Fully equipped 2 room apartment on the border of the city with nature and leisure opportunities

Object number: DR.F2

[View and rent online](#)

Built in 2019, new condition

<b>Period</b>	25/06/ - 25/07/2026
<b>Number of persons</b>	2
<b>Total incl. VAT.</b>	€ 2.123,60
<b>Security deposit</b>	€ 1.700,00



### Living space

50m<sup>2</sup>



### Maximum occupancy

2 Persons



### Complete accommodation <sup>?</sup>

1 Private bathroom 1 Separated bedroom 1 Living-Sleepingroom



### 1. floor

Elevator available



### Check-in

15:00 - 15:00 Clock



### Check-out

11:00 - 11:00 Clock

## Sleeping options

### Sleeping room



1x Double bed (1,80 m x 2 m)

### Living & Sleeping



1x Sofa bed (2 persons)

## Descripton of accommodation

Modern and sunny apartment in a quiet area

## Equipment & Features

### Basic equipment

- Balcony
  - TV
  - Bedclothes
  - Private toilet
  - Vacuum cleaner
  - Internet/Wifi
  - Private washing machine
  - Towels
  - Private parking space
- 

### First supply

- Toilet paper
  - Nespresso capsules
  - Soap
- 

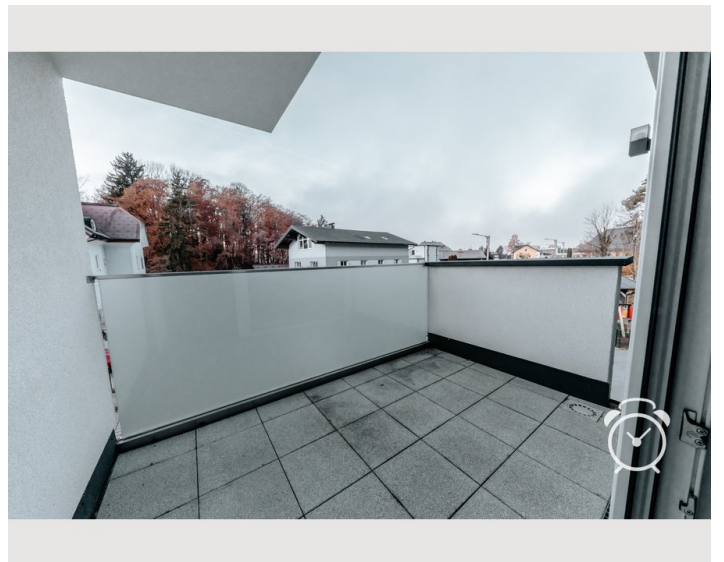
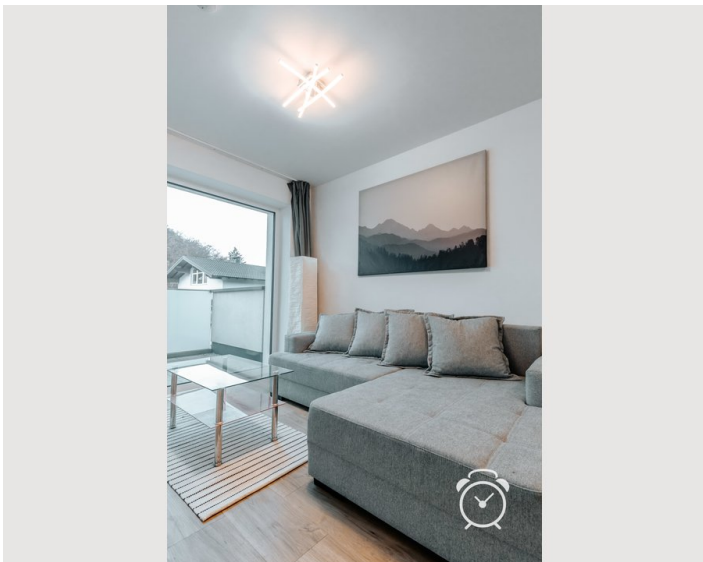
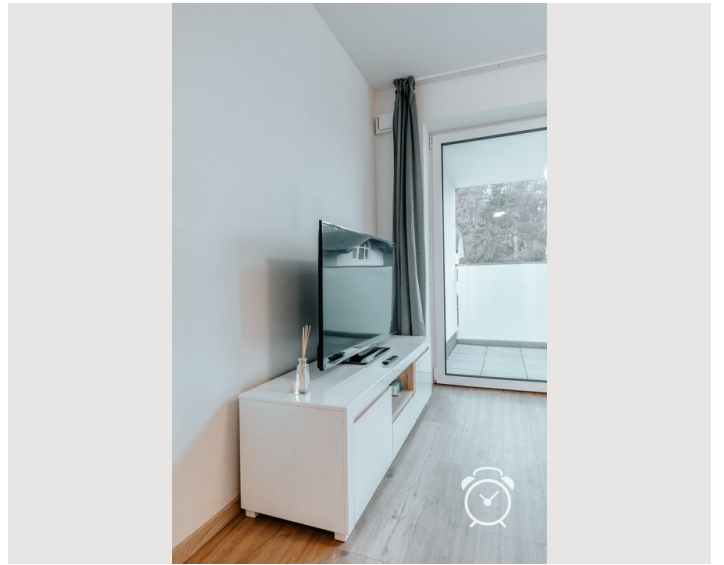
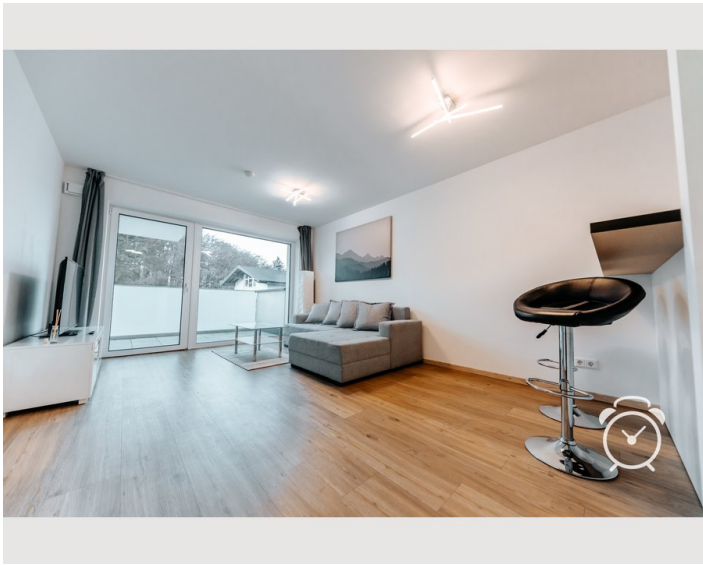
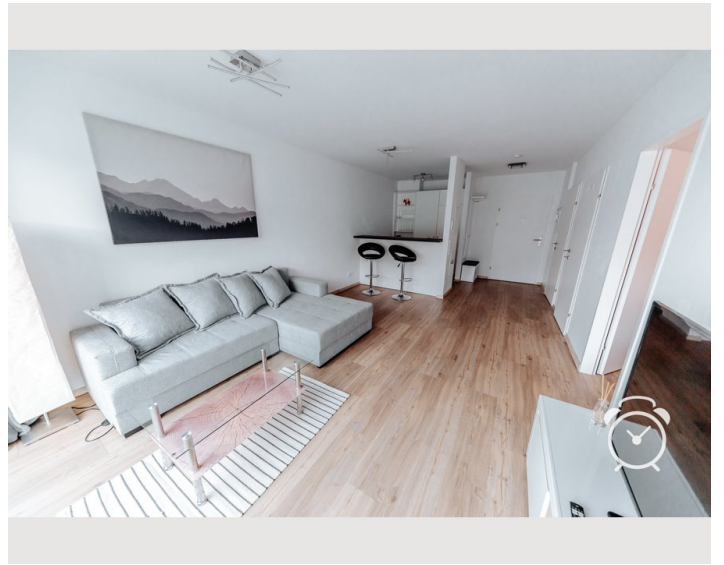
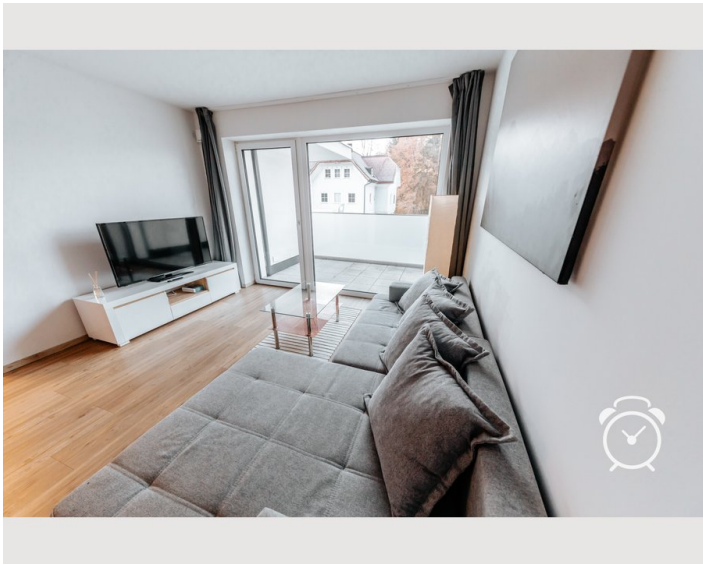
### Kitchen

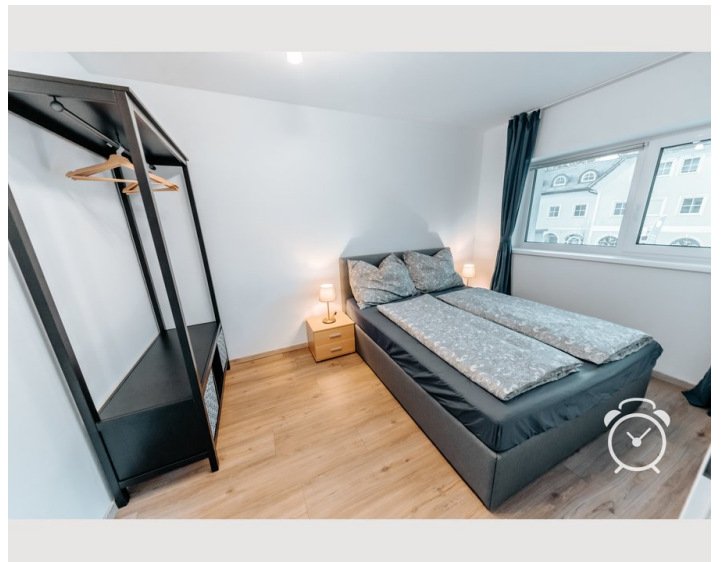
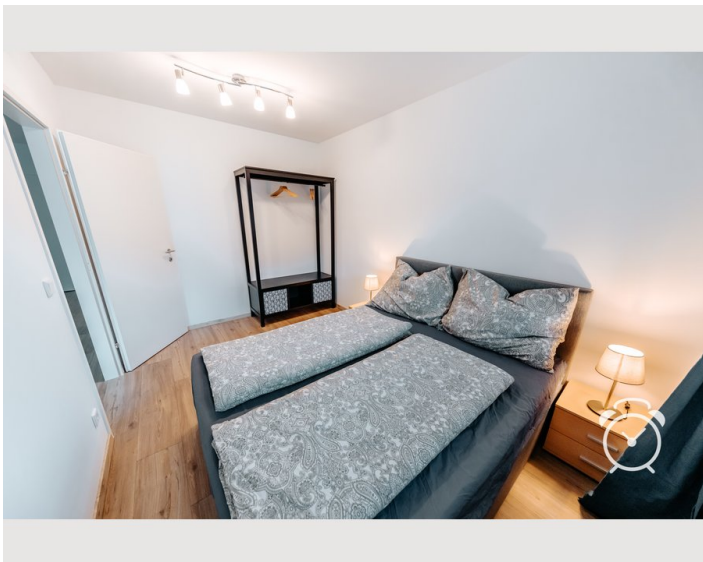
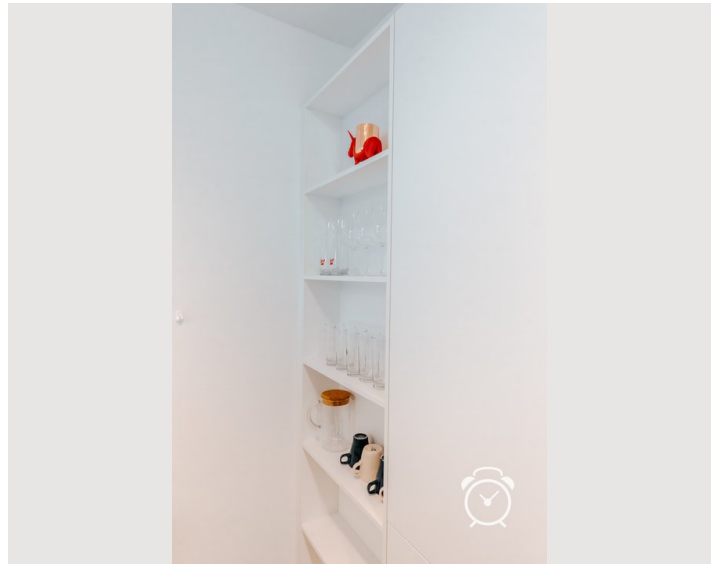
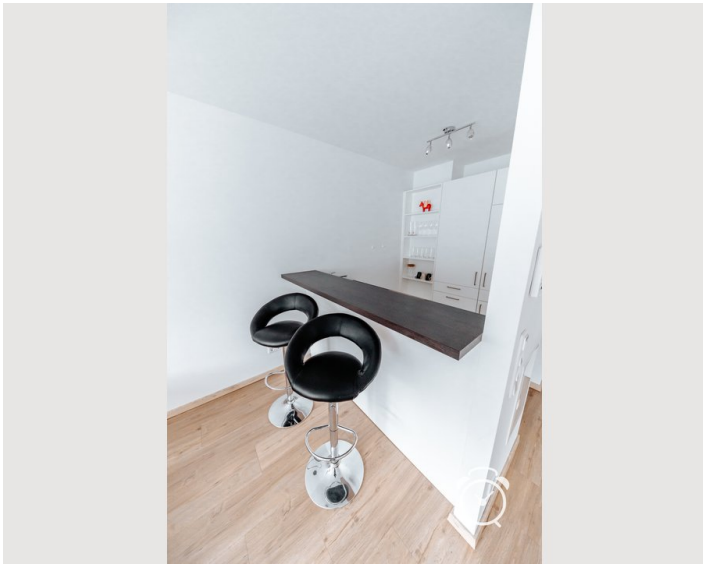
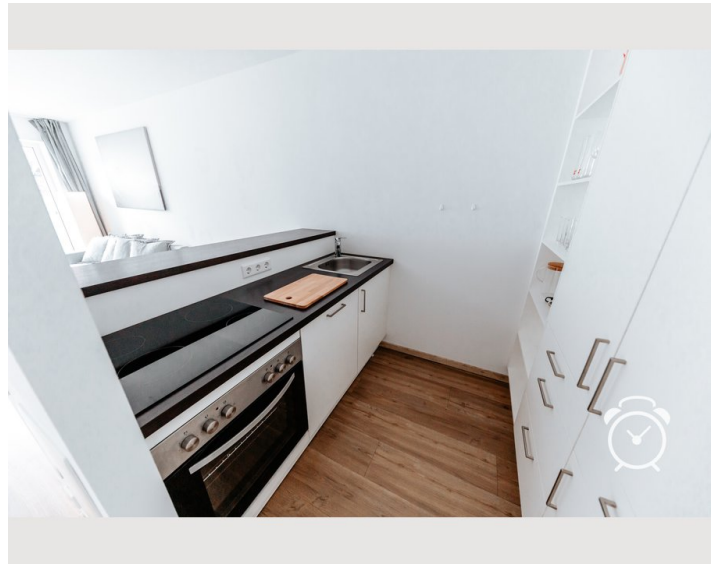
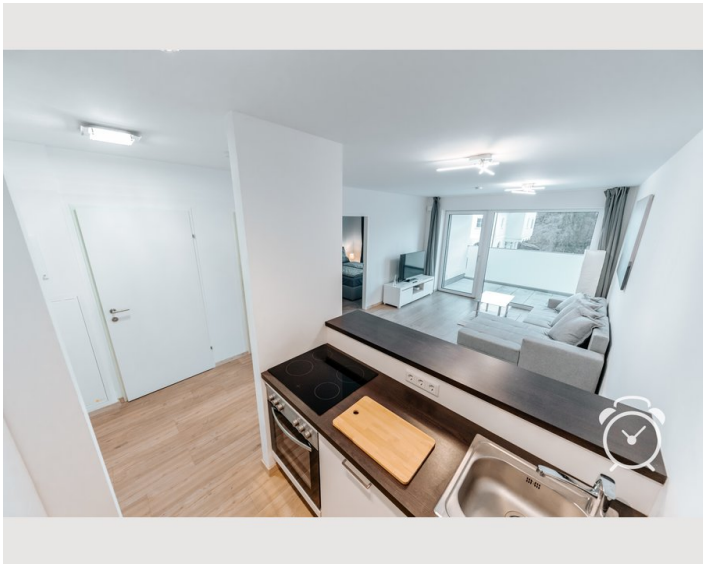
- Private kitchen
- Glasses/Tableware
- Dishwasher
- Cooking utensils
- Espresso machine

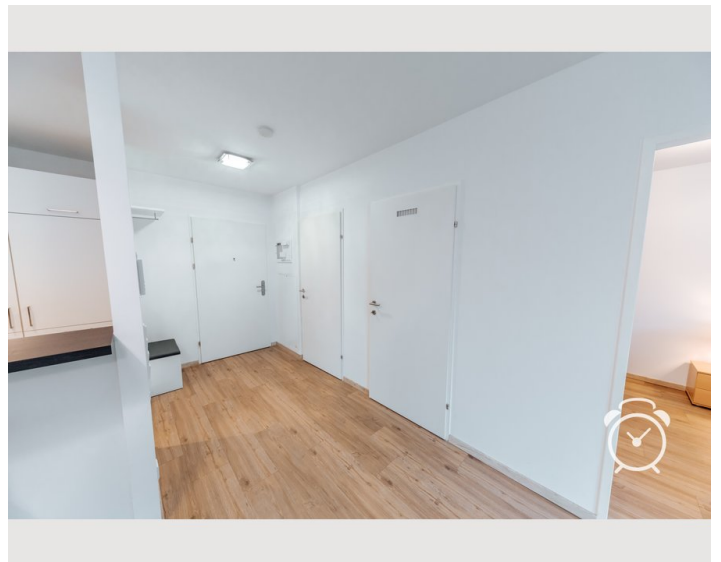
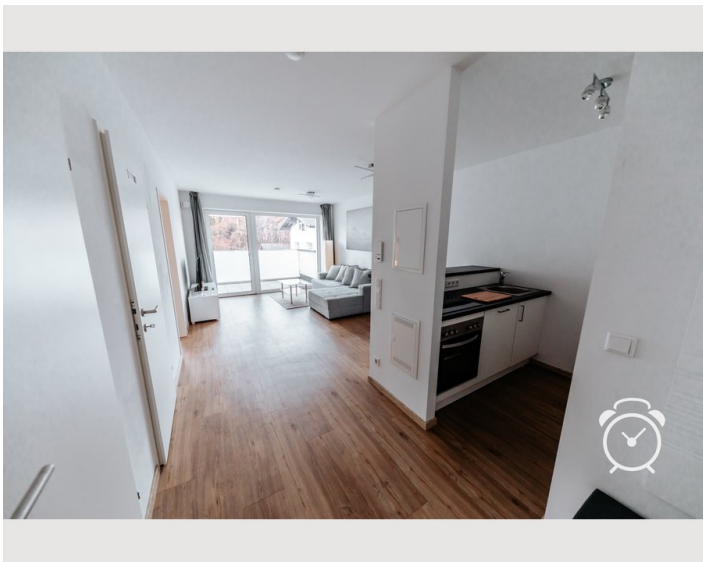
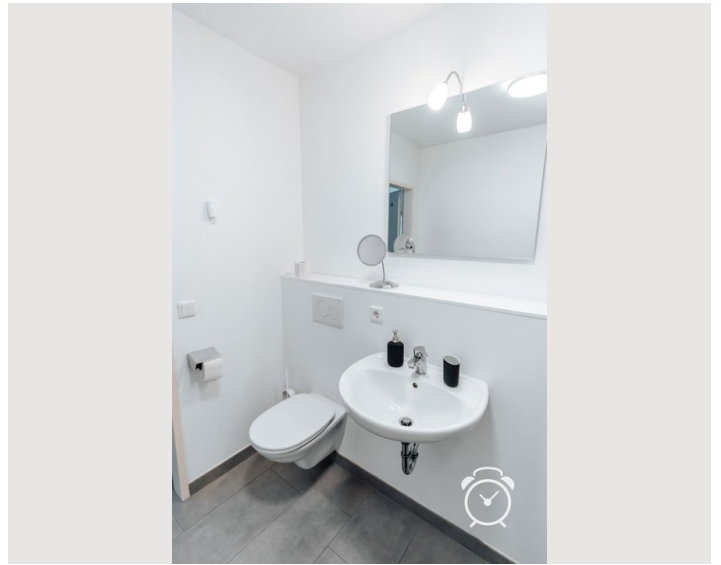
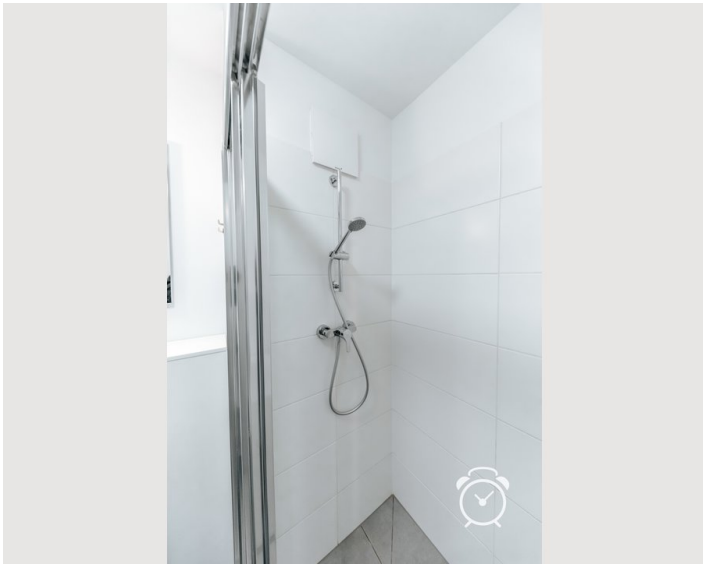
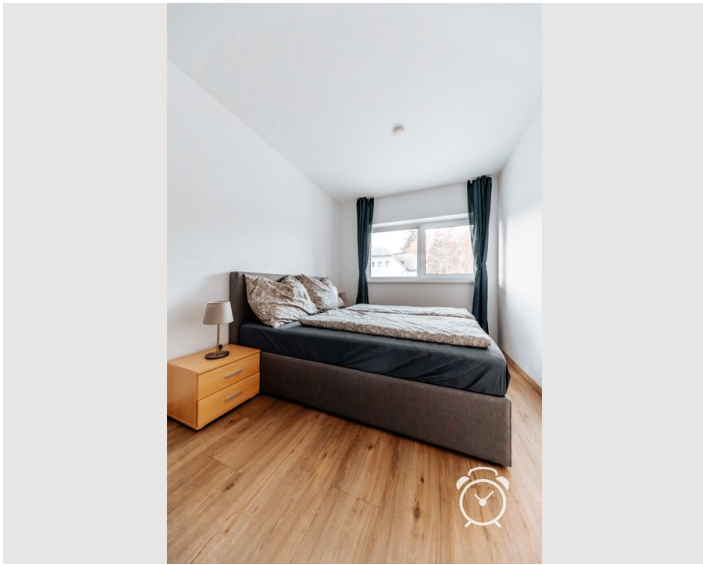
## Informations

- Private entrance
- Bicycle room free of charge
- Pets on request

## Picture gallery









## Video

Goto Video



### Infrastructure

 by foot at the roundabout

 by foot at the roundabout

bank, pharmacy, restaurant and café by foot at the roundabout

In the vicinity of the apartment, next to a grocery market and a bus stop, you will find a bank, a pharmacy and a café. Next to the apartment there is also access to the Glödenbach-Klamm, where you can walk, hike or just relax.

## Location

