



STUDIO APARTMENT, 4020 LINZ

## Zen-Style Studio 40 m2

Object number: JLQK1

[View and rent online](#)

Central, stylish, garden view & top amenities!

<b>Period</b>	27/06/ - 27/07/2026
<b>Number of persons</b>	2
<b>Total incl. VAT.</b>	€ 2.688,09
Security deposit	€ 2.100,00



### Living space

40m<sup>2</sup>



### Maximum occupancy

2 Persons



### Complete accommodation <sup>?</sup>

1 Private bathroom 1 Living-Sleepingroom



### 2. floor

Elevator available



### Check-in

15:00 - 02:00 Clock



### Check-out

06:00 - 11:00 Clock

## Sleeping options

### Living & Sleeping



1x Double bed (1,60 m x 2 m)



1x Sofa bed (1 person)

## Descripton of accommodation

Enjoy a stylish and peaceful experience at this exceptionally centrally located accommodation. The air-conditioned studio features floor-to-ceiling windows that flood the space with natural light, complemented by elegant wooden flooring. A standout highlight is the balcony, which extends across the entire length of the studio, offering a relaxing view of the backyard garden. Underfloor heating, along with both ceiling and underfloor cooling, ensures optimal comfort year-round. The fully equipped, ready-to-use kitchen (complete with all utensils), as well as an in-unit washer and dryer, leave nothing to be desired. The bathroom features a modern shower. Thanks to the blackout blinds, a restful night's sleep is guaranteed, and the living and dining area can be flexibly separated by a curtain if needed. Additionally, the building offers a high level of security.

## Equipment & Features



### Basic equipment

- Balcony
- TV
- Private dryer
- Towels
- Garage
- Iron & ironing board
- Hairdryer
- Internet/Wifi
- Private washing machine
- Bedclothes
- Private toilet
- Aircondition
- Cleaning utensils



### First supply

- Toilet paper
- Soap
- shampoo
- Nespresso capsules



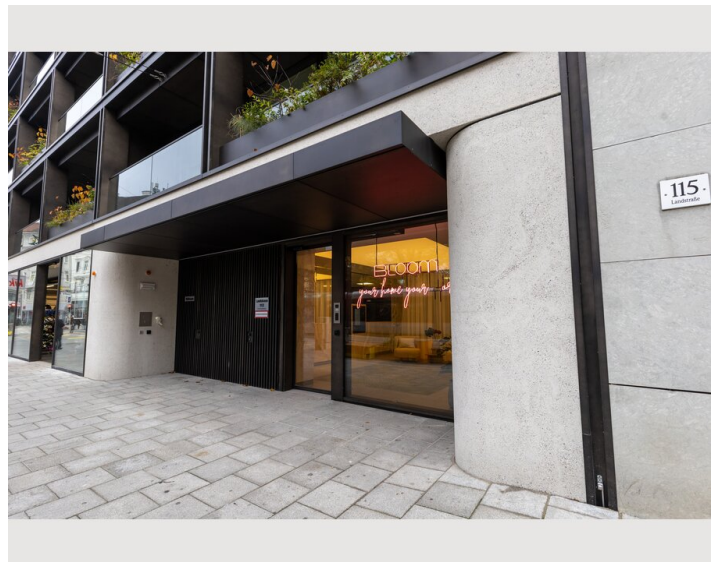
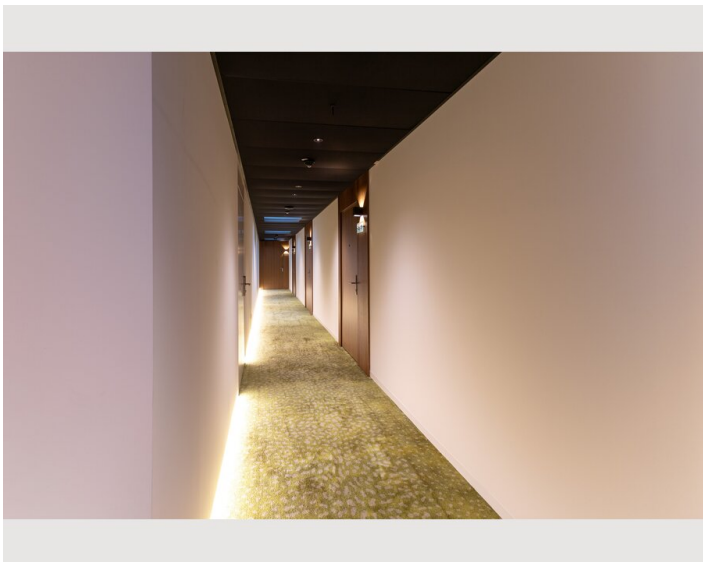
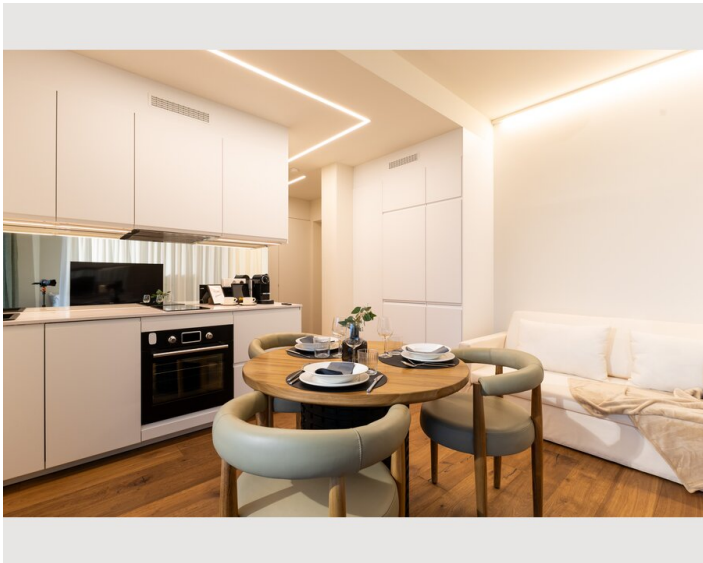
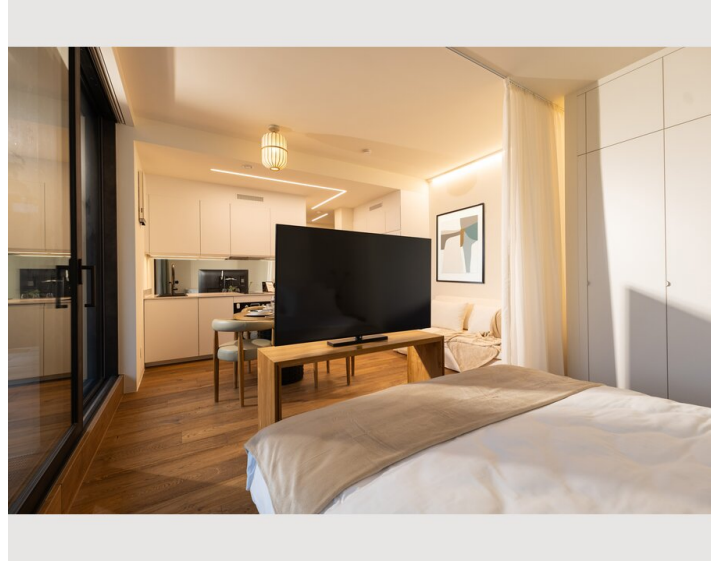
### Kitchen

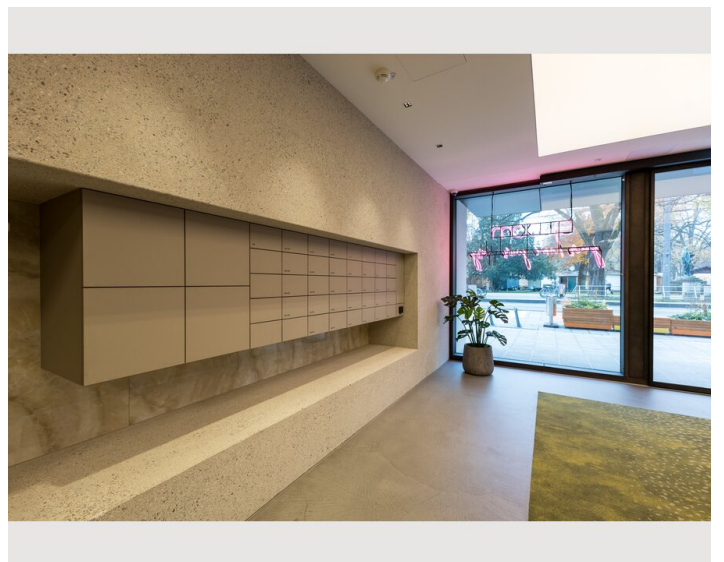
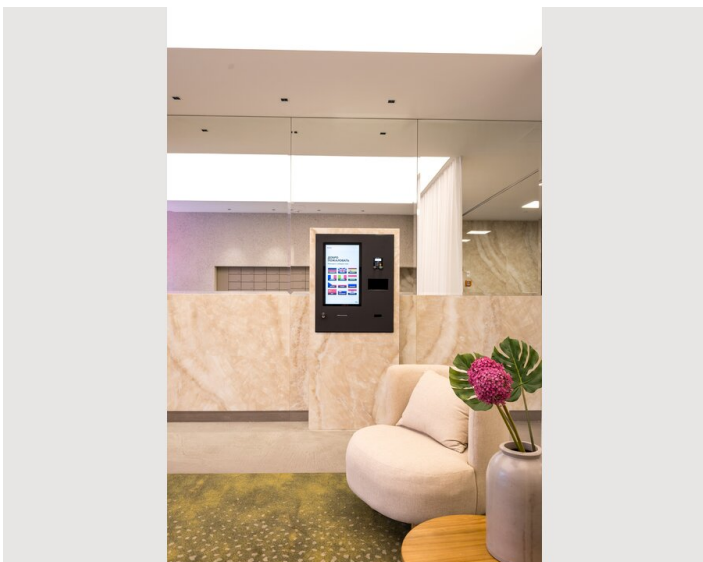
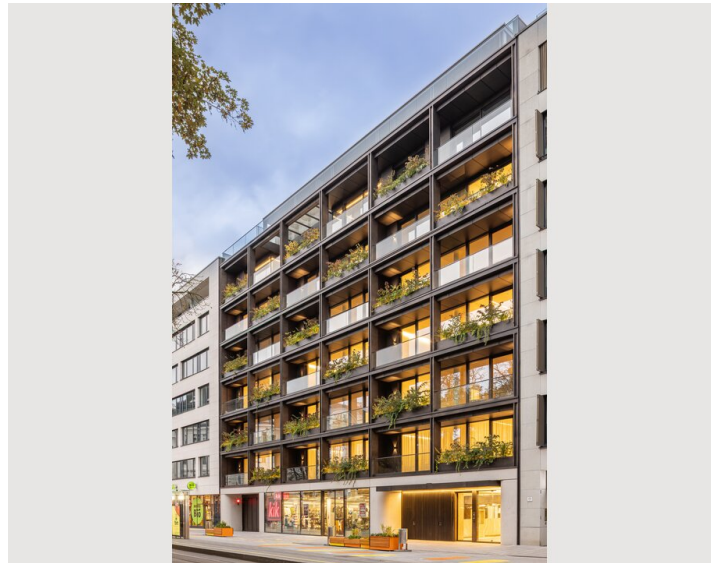
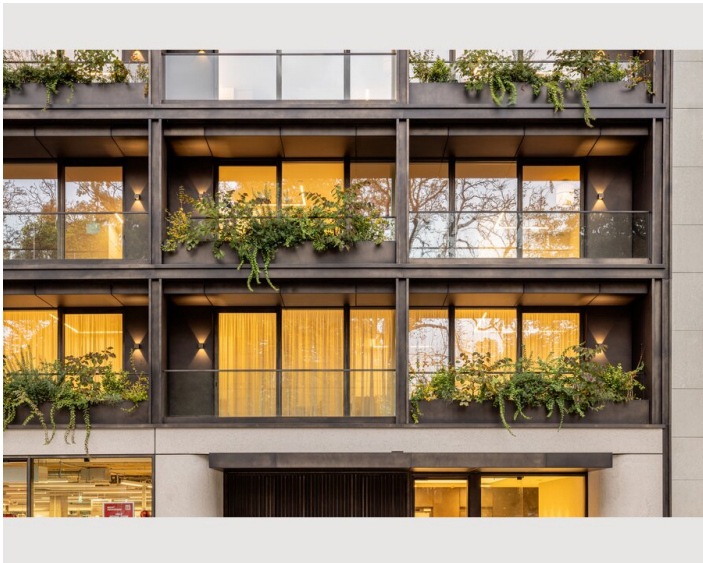
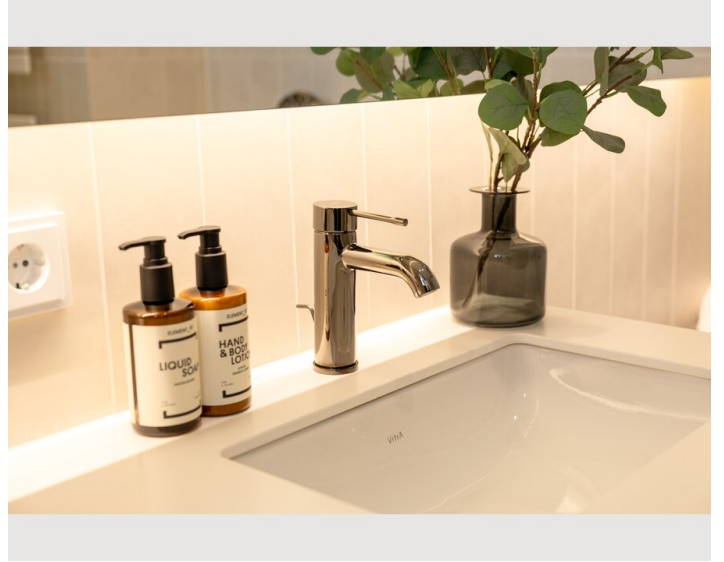
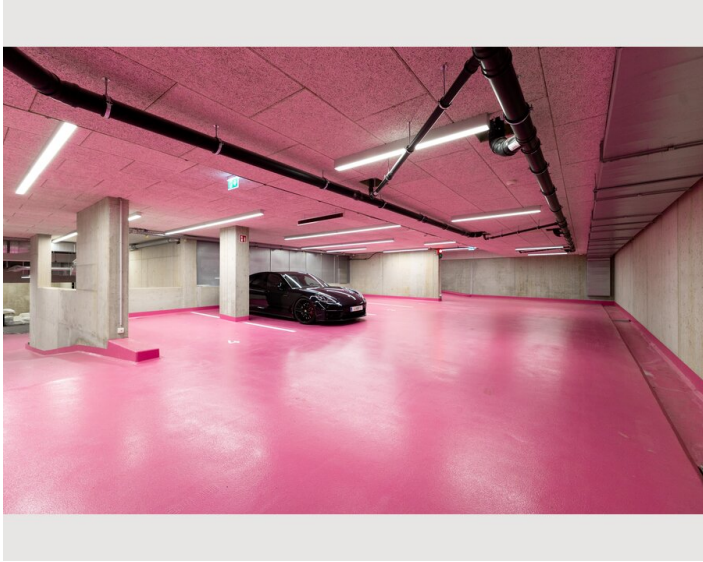
- Private kitchen
- Glasses/Tableware
- Dishwasher
- Cooking utensils
- Espresso machine

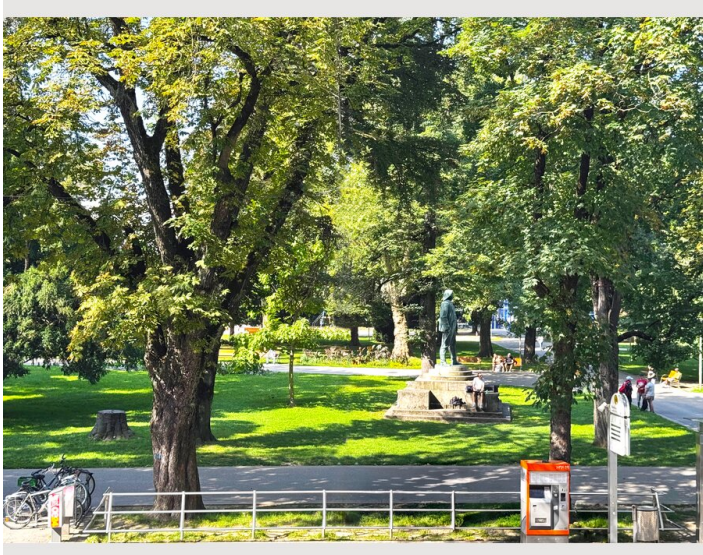
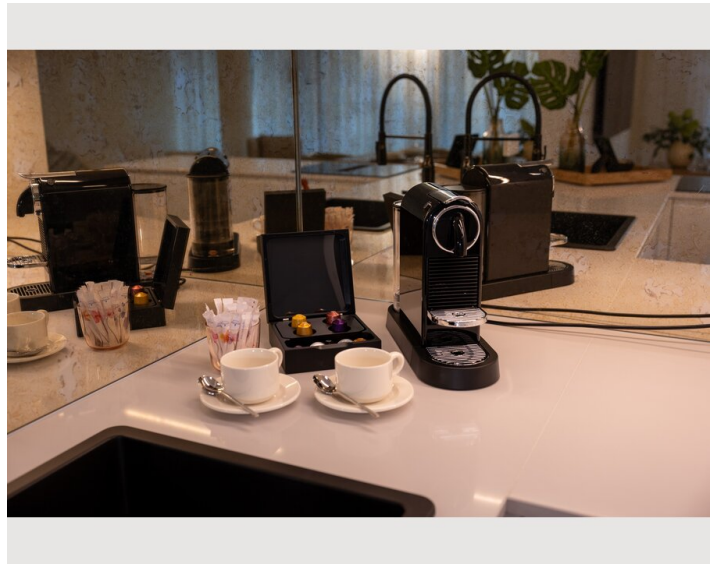
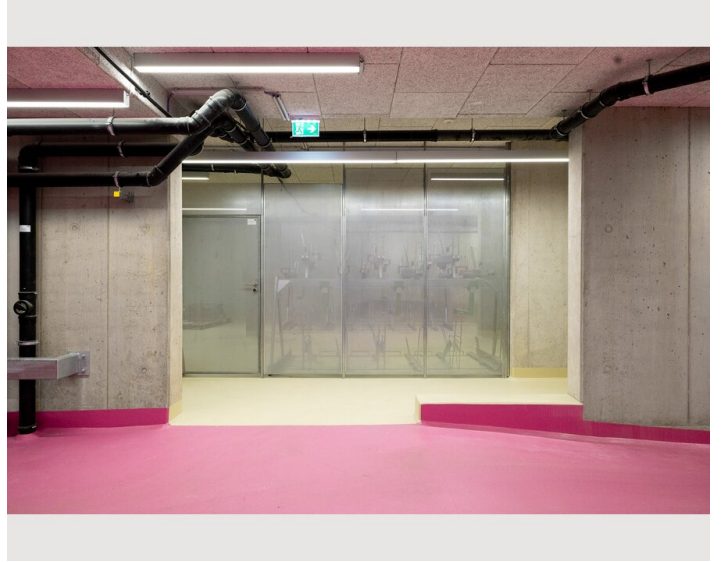
## Informations

- Smoking not allowed
- Regular cleaning free of charge
- Pets allowed
- Bicycle room free of charge

## Picture gallery







## Infrastructure

- 🚆 train and Tram
- 🚶 Shopping street walking
- 🛒 Bio-Supermarket within 2 minutes walking

The building boasts an absolute prime location directly in the pedestrian zone, right opposite the Volksgarten, and in the immediate vicinity of the new Musiktheater. Accessibility is flawless: if arriving by train, the tram stop is just one station away from the main terminal, right outside your doorstep. For those arriving by car, access to the in-house underground garage is easily available at any time. Thanks to this central location, all daily amenities and shops are within easy walking distance. Enjoy the very best of urban downtown living—combined with a relaxing view of the greenery and absolute peace without any street noise.

## Location

