



2 ROOM APARTMENT, 4020 LINZ

Luxury feels like home

Object number: LANQ2

[View and rent online](#)

This spacious, modern apartment combines premium comfort with Japanese design. West-facing with floor-to-ceiling windows, it is exceptionally sunny, offering park views, a veranda, 75" TV, and a guest WC. The fully equipped kitchen is move-in ready.

| | |
|--------------------------|---------------------|
| Period | 27/06/ - 27/07/2026 |
| Number of persons | 2 |
| Total incl. VAT. | € 3.901,57 |
| Security deposit | € 3.000,00 |



Living space

60m²



Maximum occupancy

2 Persons



Complete accommodation [?]

1 Private bathroom 1 Separated bedroom



3. floor

Elevator available



Check-in

15:00 - 00:00 Clock



Check-out

11:00 - 11:30 Clock

Sleeping options

Sleeping room



1x Double bed (1,80 m x 2 m)

Description of accommodation

This spacious, modern apartment beautifully combines upscale living comfort with harmonious Japanese design elements. Thanks to its optimal west-facing orientation and floor-to-ceiling windows in the living and sleeping areas, the apartment is exceptionally sunny. It offers a soothing view of a public park as well as access to the directly adjacent veranda. An impressive 75" Smart TV ensures top-tier entertainment in the living room, and a separate guest toilet is conveniently located in the living area.

The kitchen is completely move-in ready ("löffelfertig") and fully equipped, ensuring everything is in place for cooking and dining from day one.

The generous bedroom is a private oasis of calm, equipped with a 65" TV and its own directly accessible en-suite bathroom. The bathroom features a modern shower and double sinks. For your ultimate comfort, fresh bed linen, towels, soap, and shampoo are provided.

Maximum independence and a perfect indoor climate throughout the year are guaranteed by an in-unit washer-dryer, an innovative underfloor and ceiling cooling system in the summer, and cozy underfloor heating in the winter.

Equipment & Features



Basic equipment

- Balcony
- Private washing machine
- Bedclothes
- Private toilet
- Aircondition
- Cleaning utensils
- TV
- Private dryer
- Towels
- Garage
- Iron & ironing board
- Hairdryer



First supply

- Toilet paper
- Soap
- shampoo
- Nespresso capsules



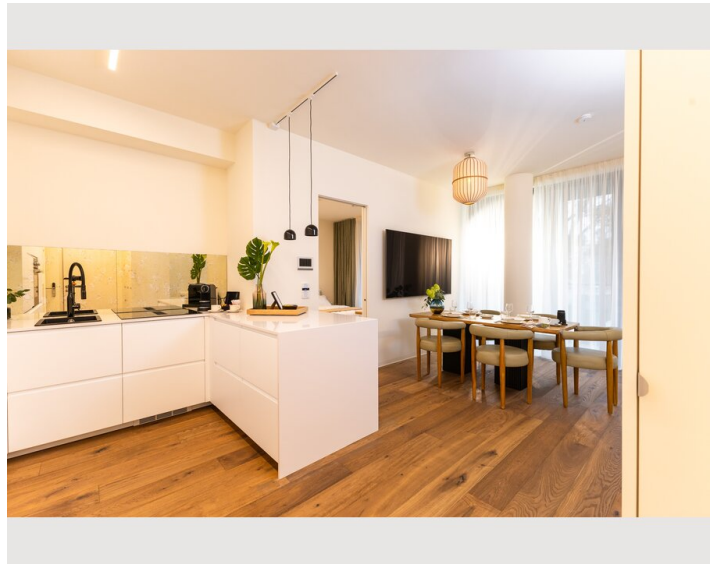
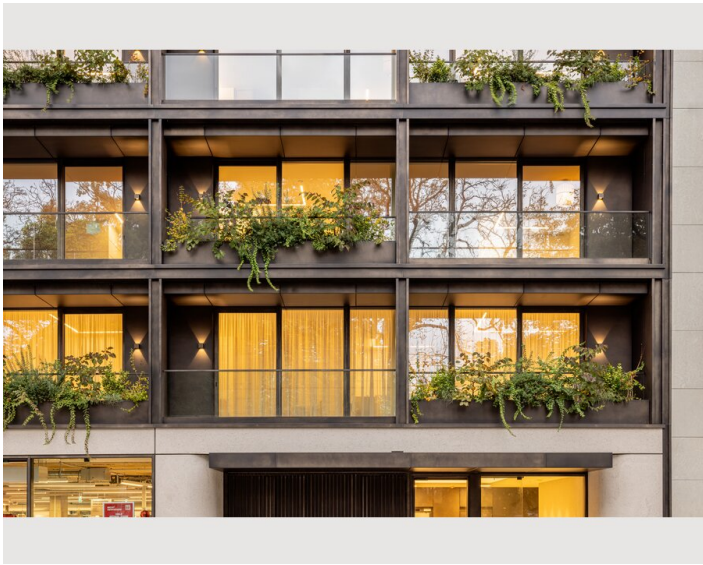
Kitchen

- Private kitchen
- Glasses/Tableware
- Dishwasher
- Cooking utensils
- Espresso machine

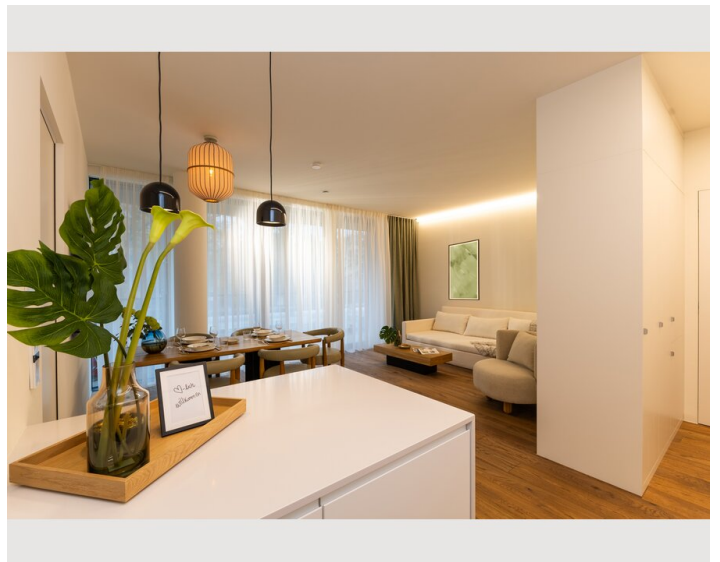
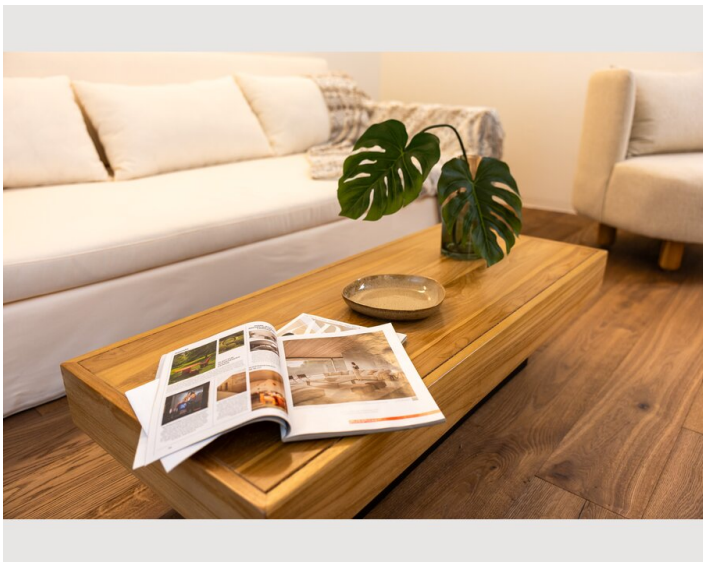
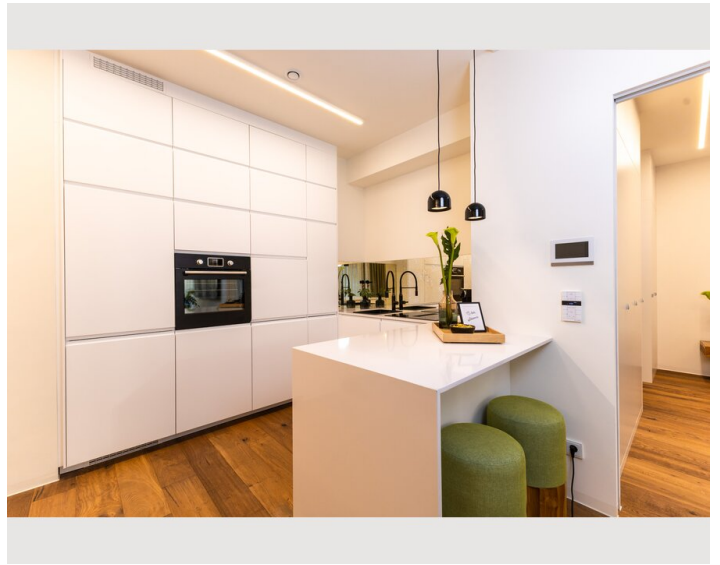
Informations

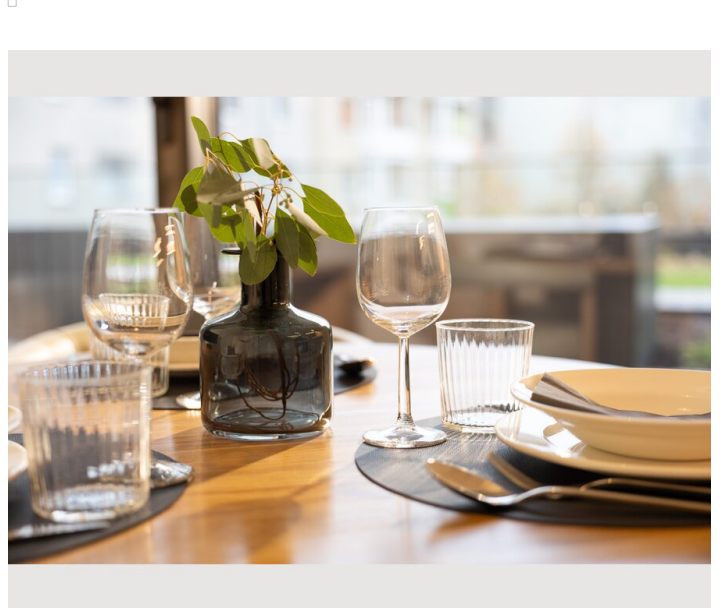
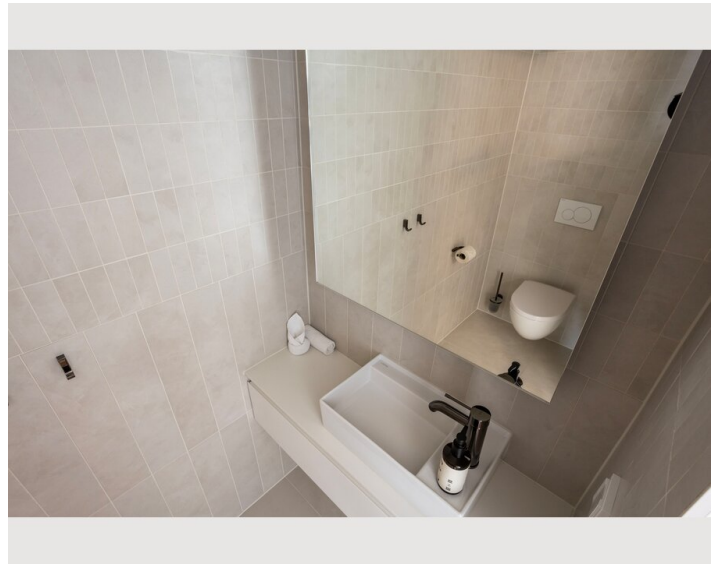
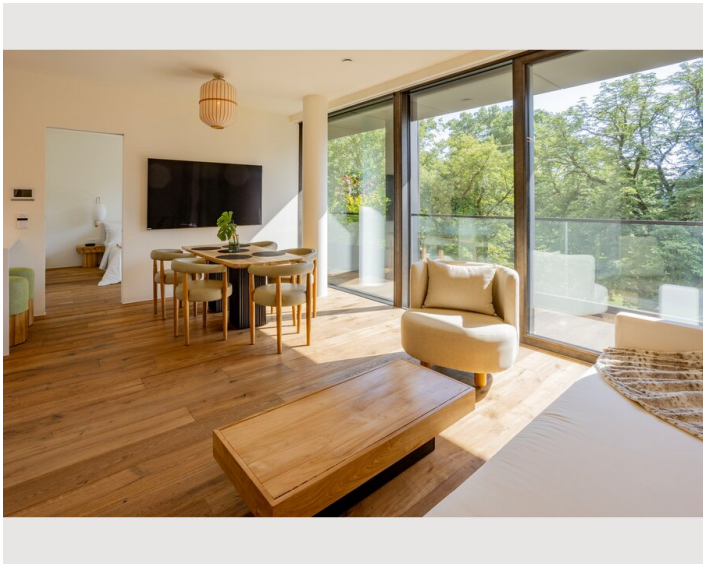
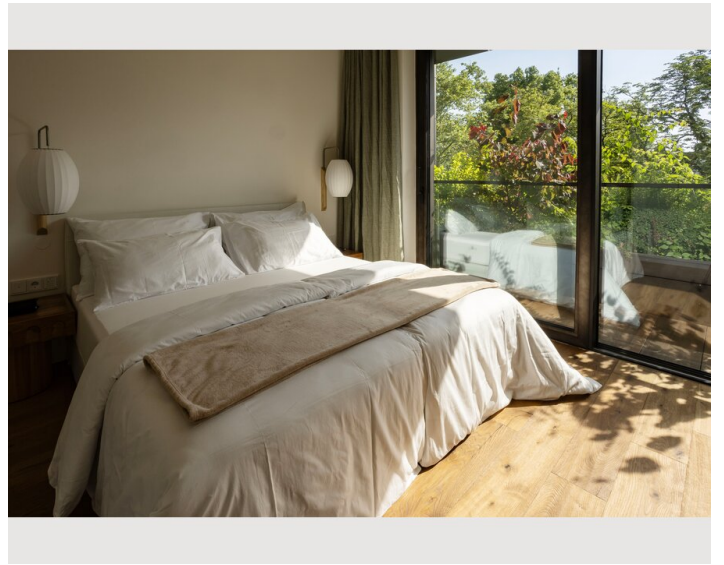
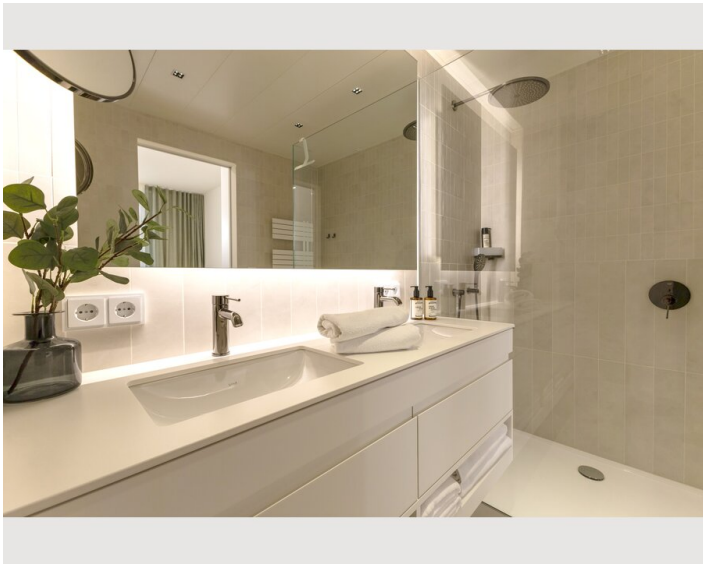
- Smoking not allowed
- Regular cleaning free of charge
- Pets allowed
- Bicycle room free of charge

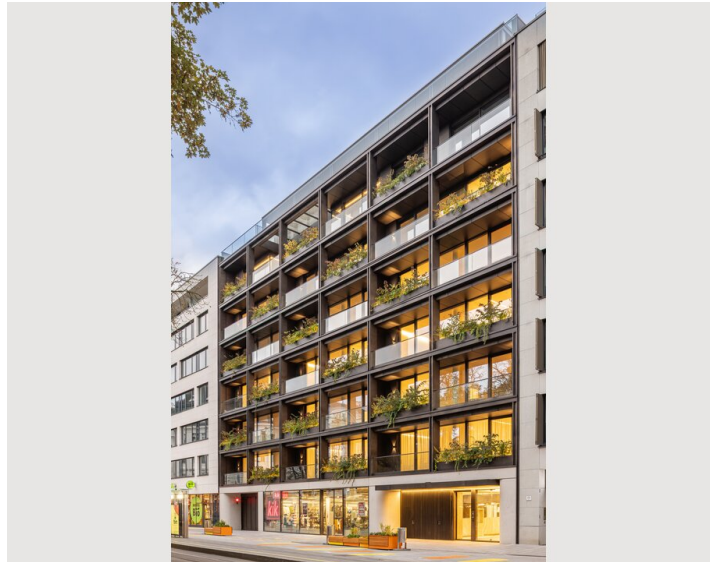
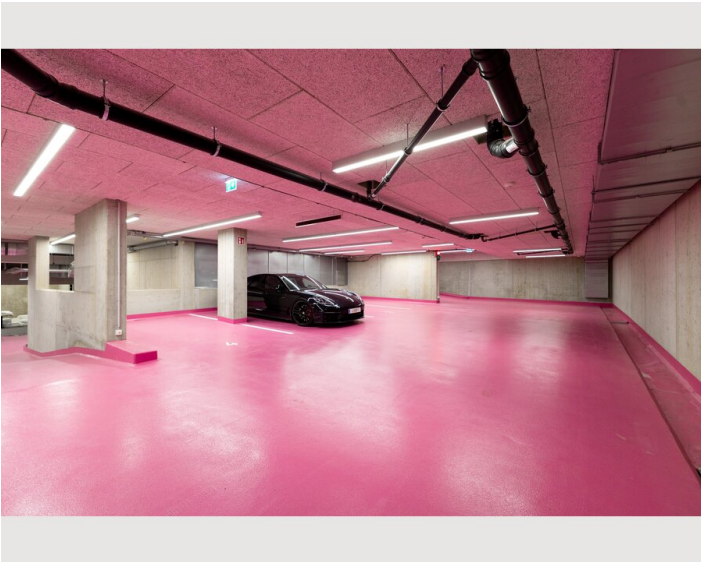
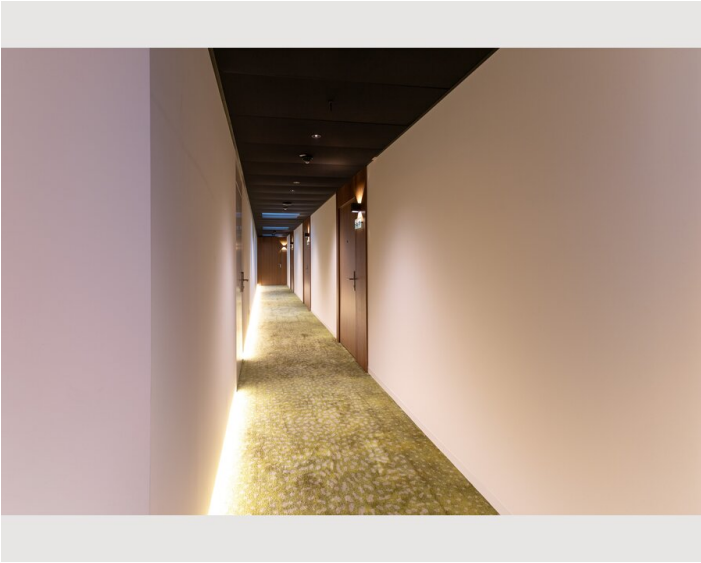
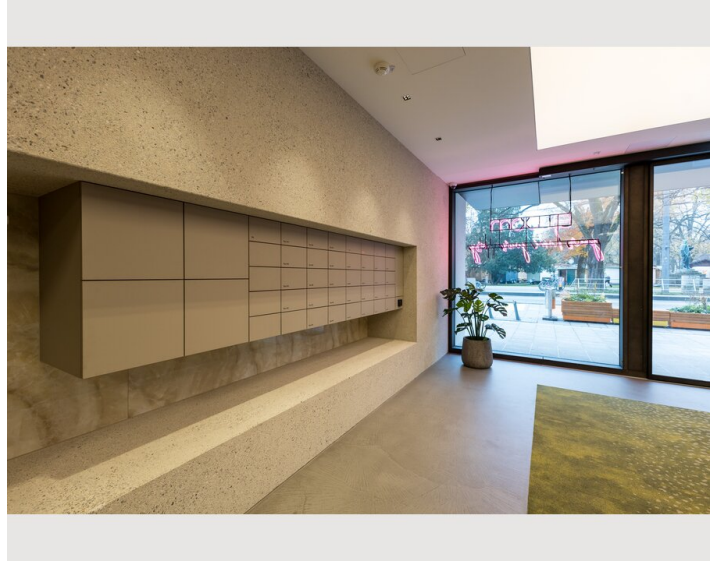
Picture gallery

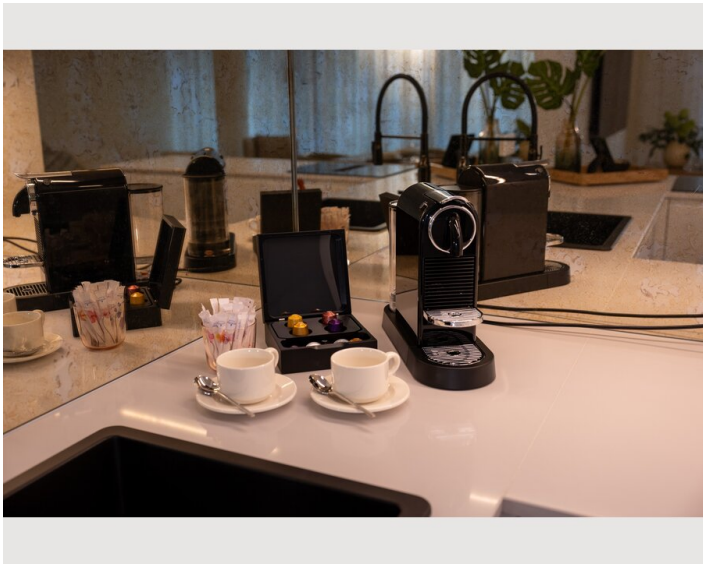
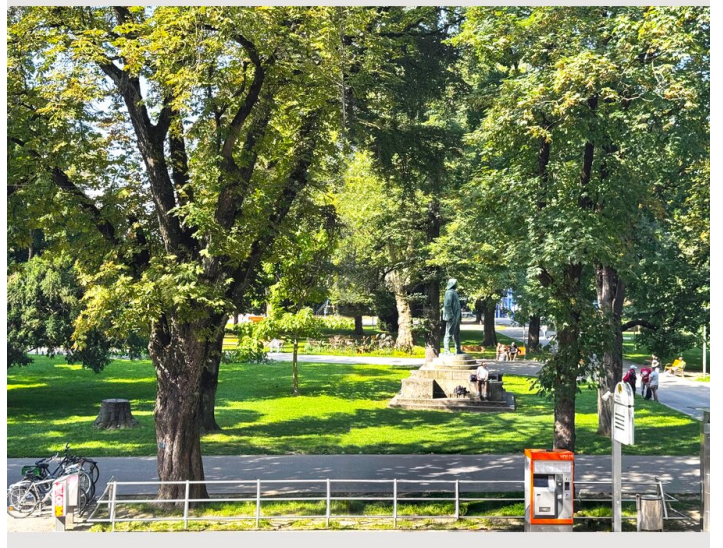
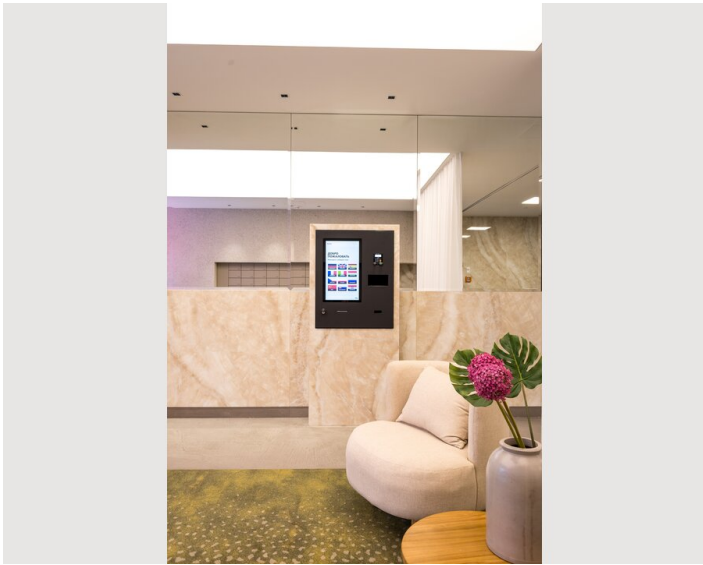


□

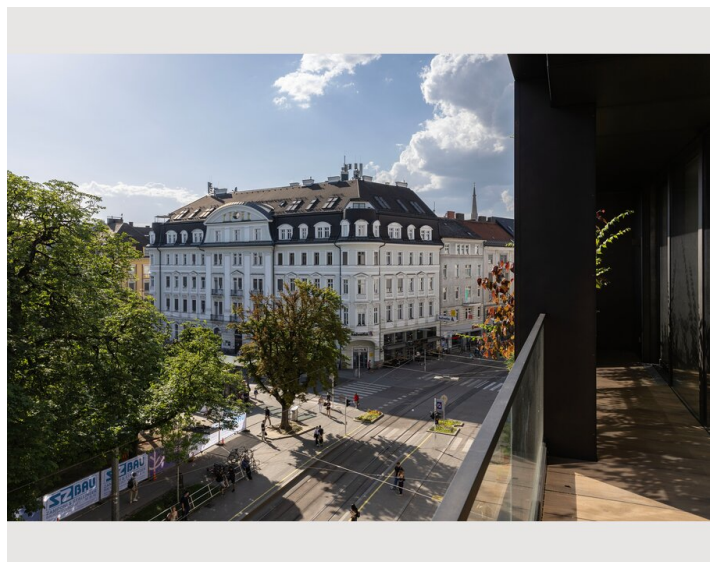


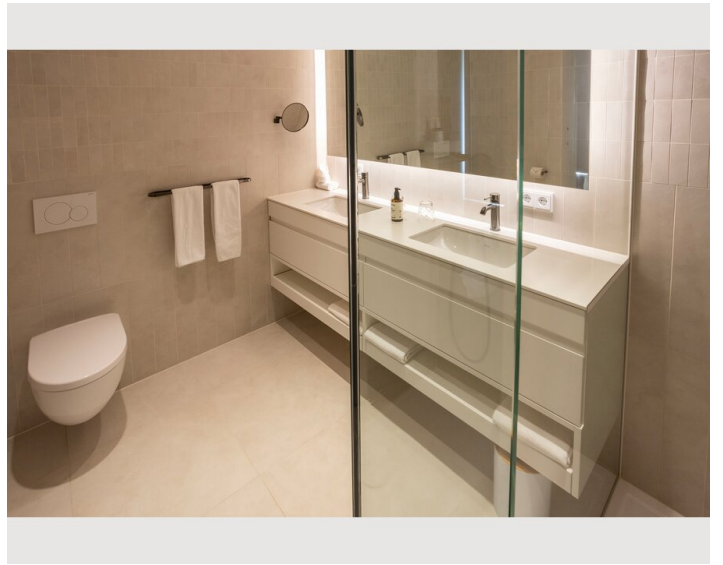
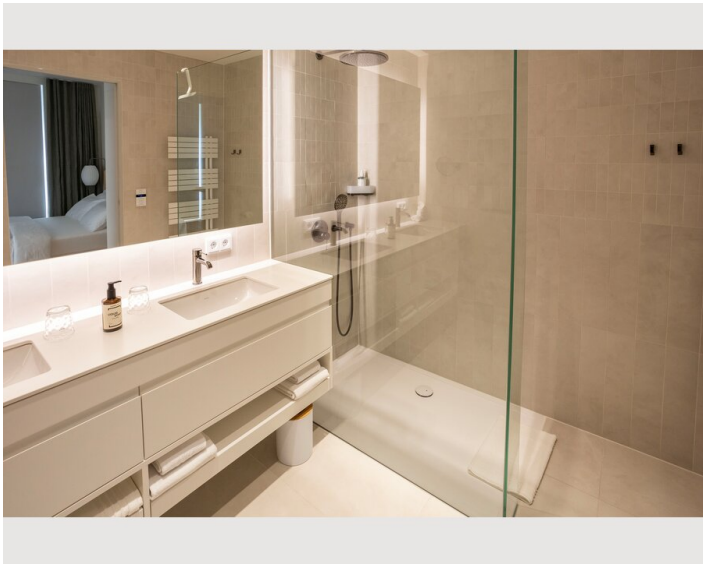
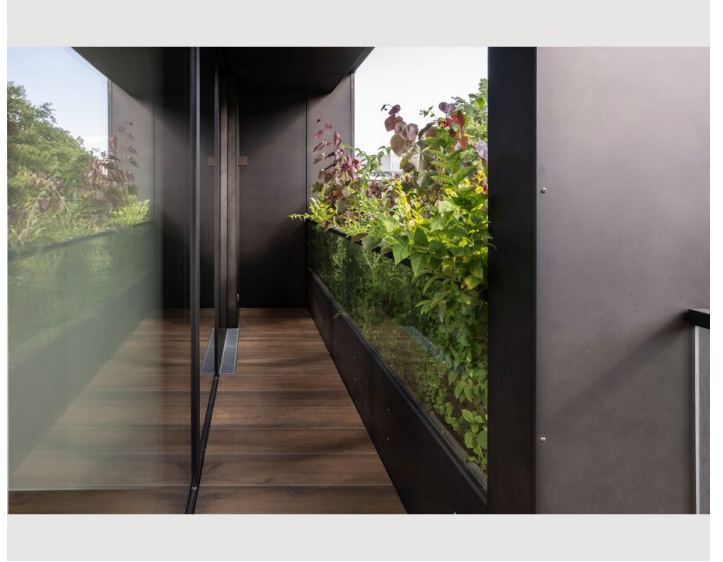
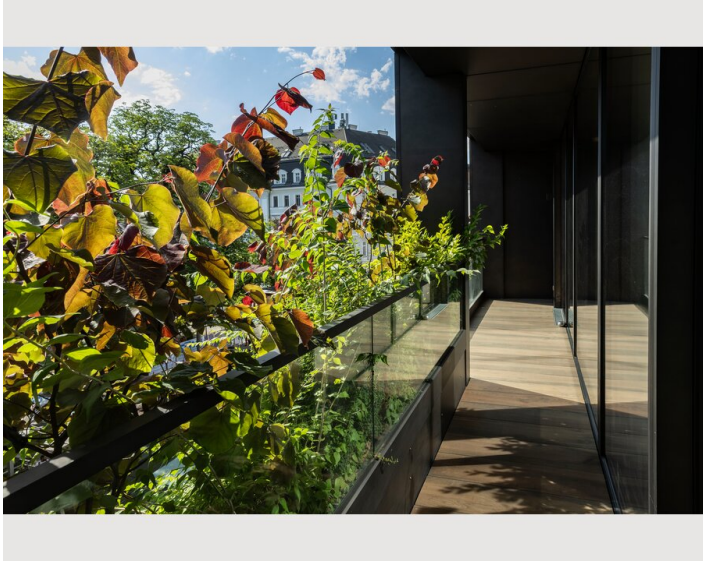






□





□

□

□

Infrastructure

📍 by foot

🛒 Denny's BioMarkt, Landstrasse 111

🚊 Tram 1 Stop

🚖 Taxi, Uber

Located in the heart of Linz, this accommodation offers everything professionals and business travelers need for a smooth everyday routine. A BILLA supermarket is reachable within steps, with several other grocery options close by. After a long workday, a wide variety of restaurants and cafés are right outside the door, ranging from Korean bowls and Italian dining to quick casual options. Public transport is excellent, with a bus stop just around the corner. Linz Central Station is only about 600 meters away, making it easy to commute or travel for work. The location combines urban convenience with strong connectivity, well suited for stays of several weeks or months.

Location

