

STUDIO APARTMENT, 5020 SALZBURG

Cityloft with view on the fortress

Object number: MOSJ2

[View and rent online](#)

Period	24/05/ - 24/06/2026
Number of persons	2
Total incl. VAT.	€ 1.614,97
Security deposit	€ 1.200,00

This apartment was completely refurbished recently and offers a modern standard that leaves no wish unfilled. Additionally this short term flat persuades through a small balcony with a direct view to the towns landmark the fortress Hohensalzburg.



Living space

38m²



Maximum occupancy

2 Persons



Complete accommodation [?]

1 Private bathroom 1 Living-Sleepingroom



6. floor

Elevator available



Check-in

09:00 - 20:00 Clock



Check-out

09:00 - 20:00 Clock

Sleeping options

Living & Sleeping



1x Double bed (1,80 m x 2 m)

Descripton of accommodation

In addition, the short-term apartment impresses with a small balcony with a view of the Salzburg landmark - The Fortress Hohensalzburg, Mönchstein Castle and the Untersberg.

In the laundry place you will find several washing machines (as well as dryers), which are operated by small coins.

Of course a car is not obligatory since the flat is located so central. Who needs a car anyway, is not obliged to stick to the short parking zone, but you can hire a parking space at the hotel opposite the road for only 50,- EUR a month.

Equipment & Features



Basic equipment

- Balcony
- TV
- Community dryer
- Towels
- Vacuum cleaner
- Cleaning utensils
- Internet/Wifi
- Community washing machine
- Bedclothes
- Private toilet
- Iron & ironing board



First supply

- Toilet paper
- Soap
- shampoo



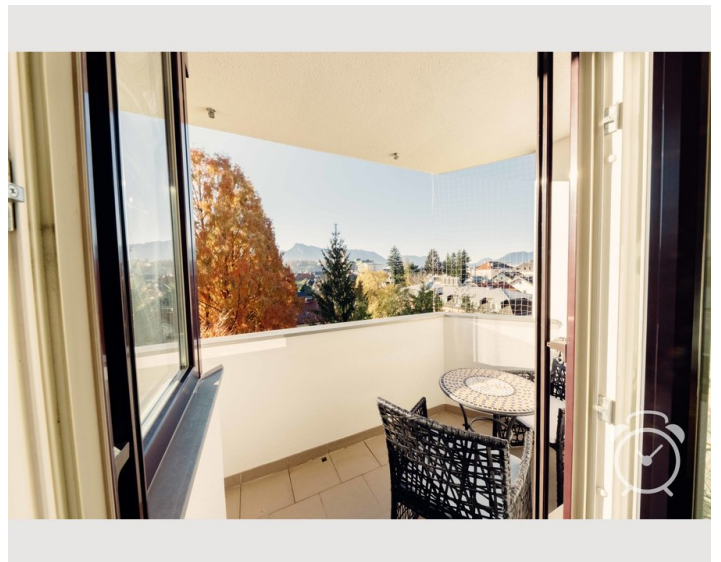
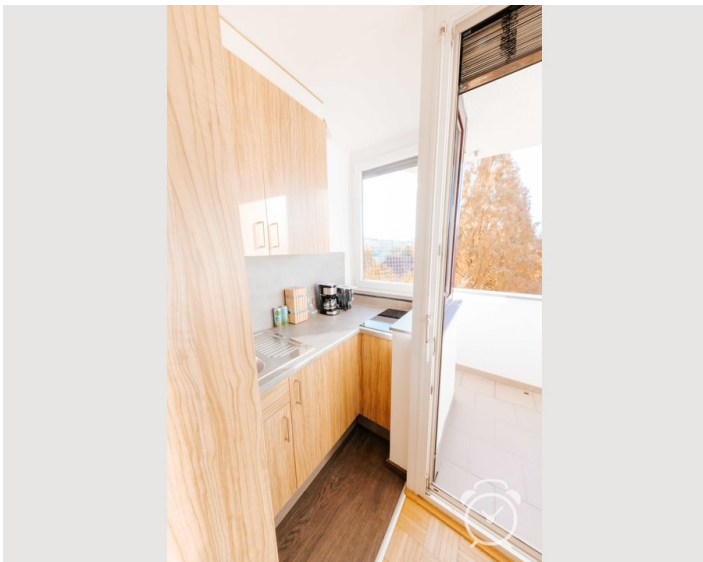
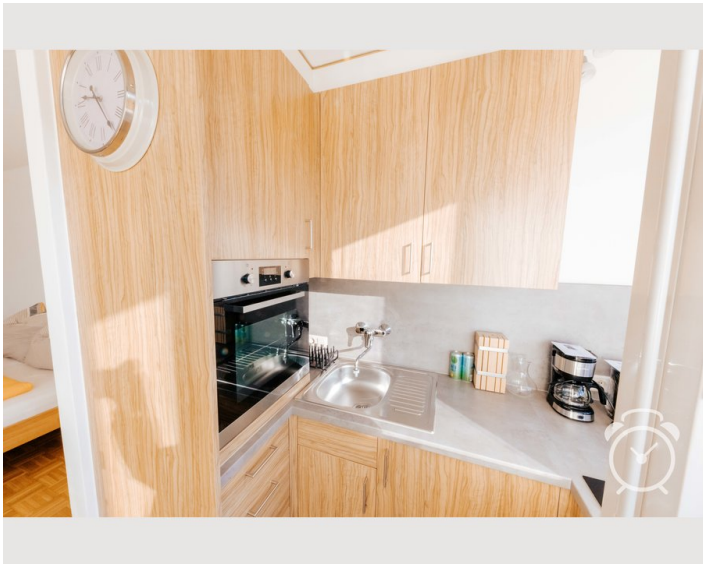
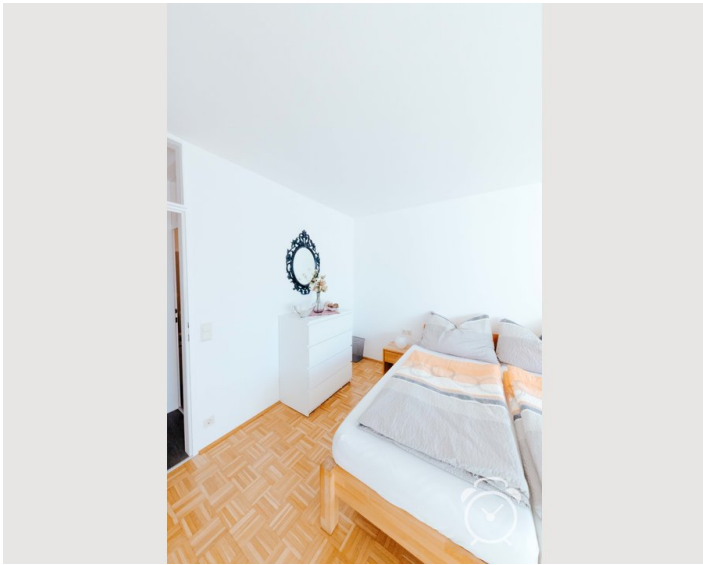
Kitchen

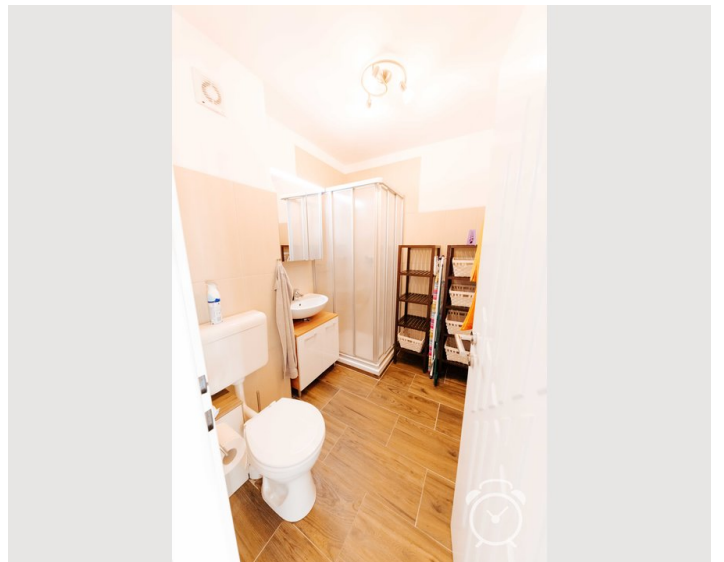
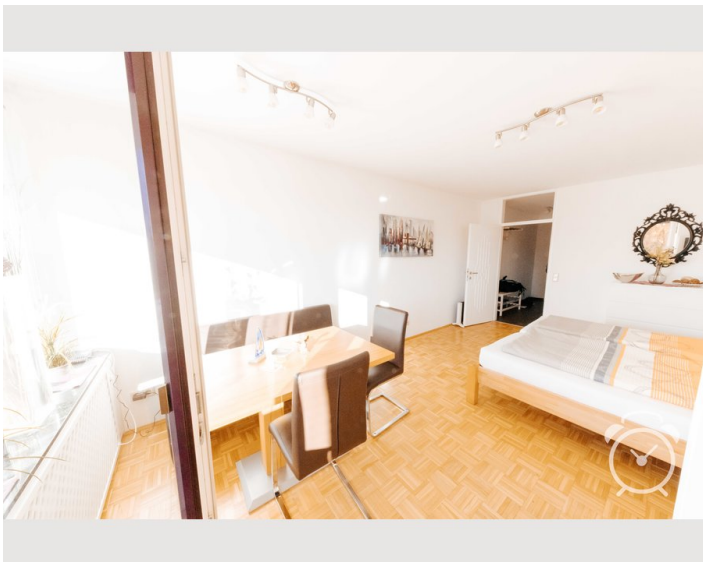
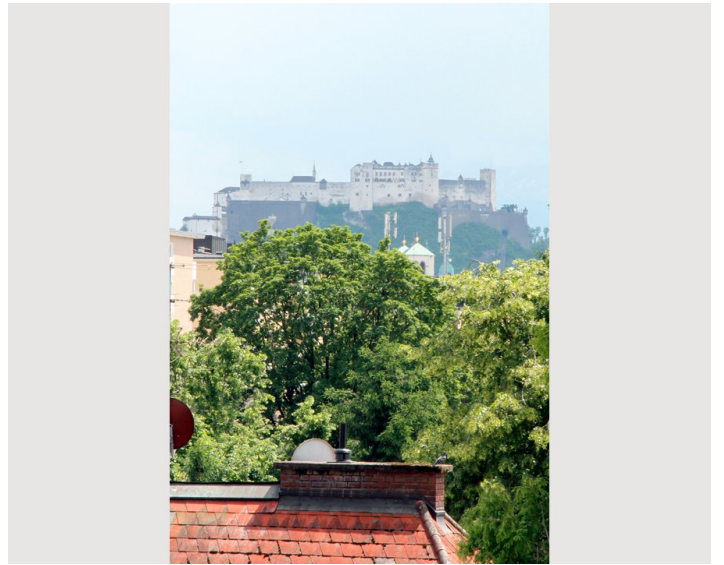
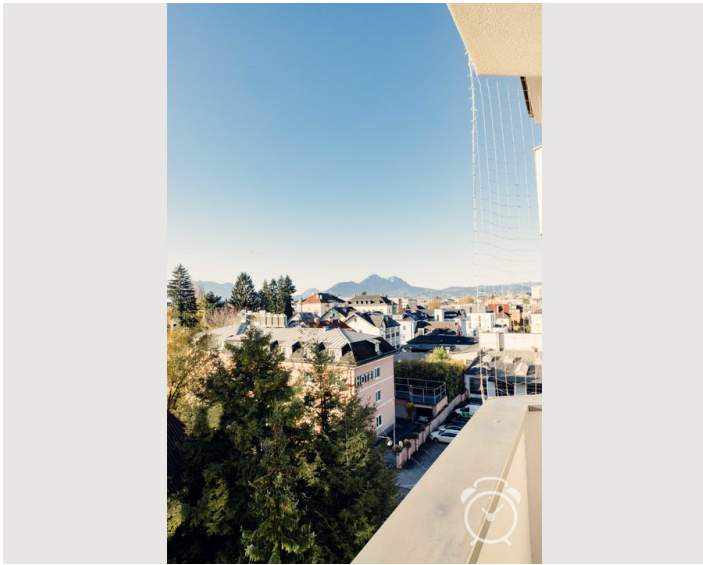
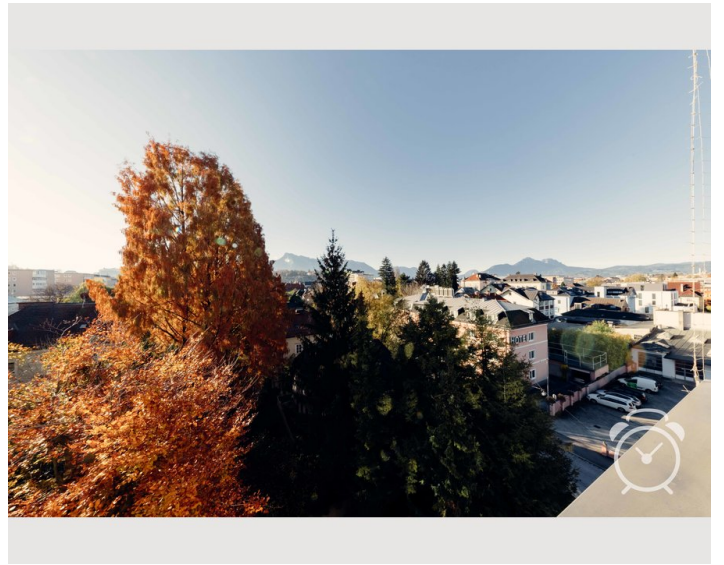
- Private kitchen
- Cooking utensils
- Filter coffee
- Kitchenette
- Glasses/Tableware

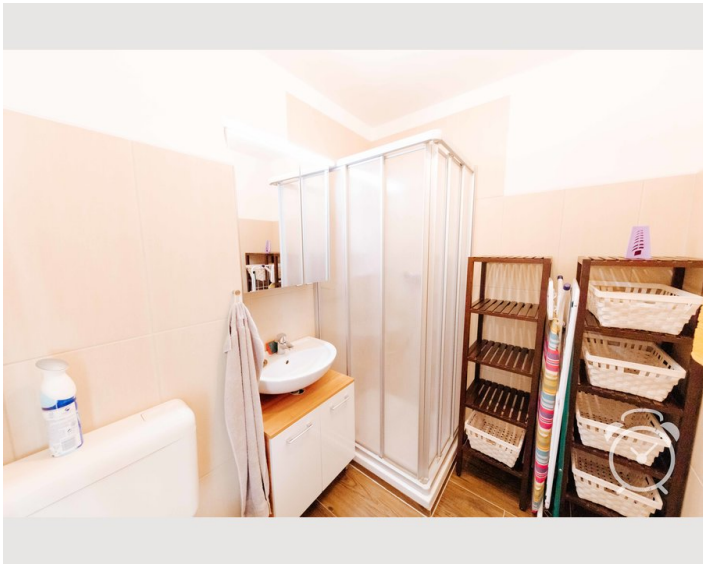
Informations

- Smoking not allowed
- Desk/Workplace
- Pets forbidden
- Short-term parking zone subject to a charge
- Private entrance

Picture gallery

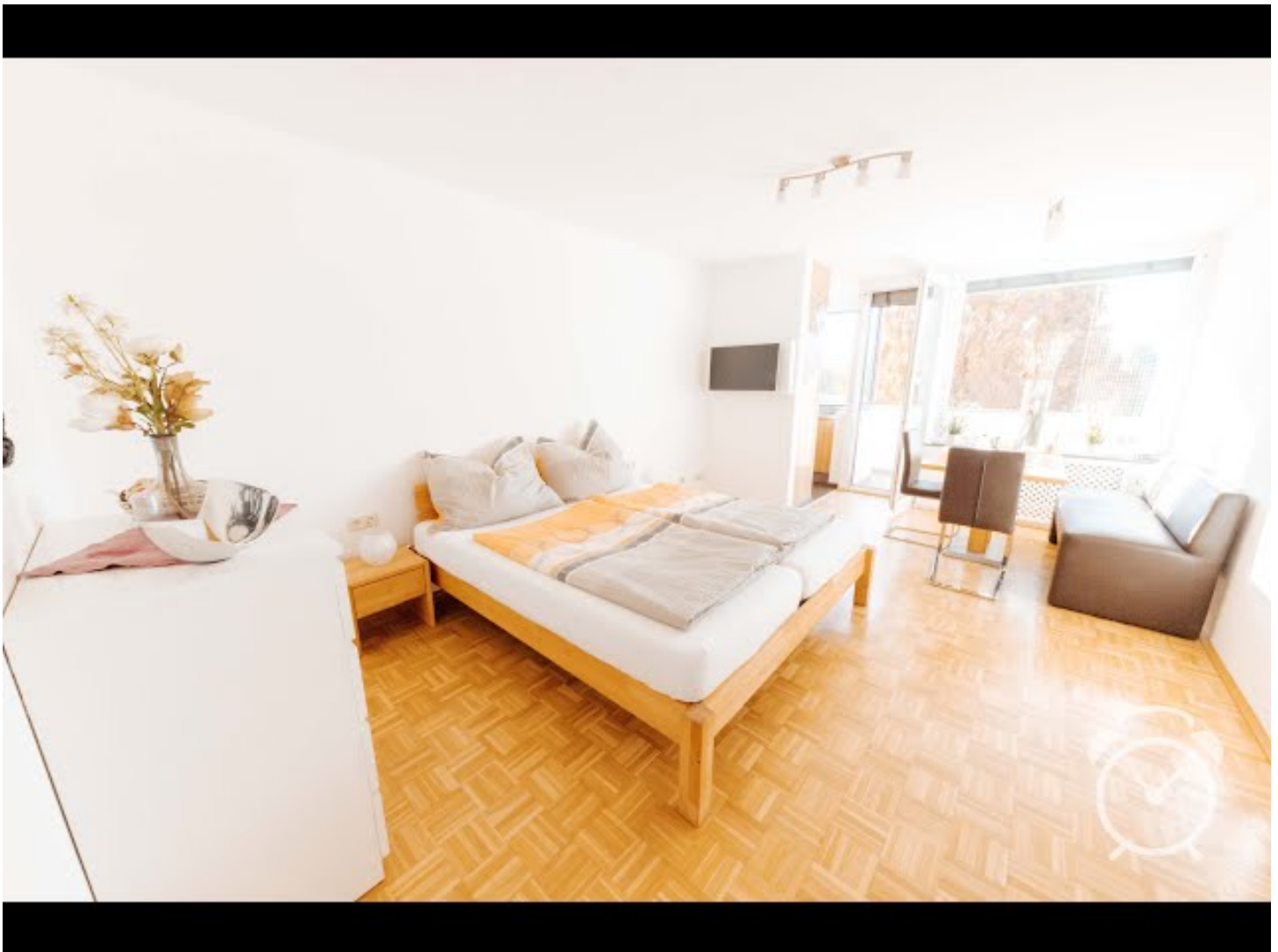






Video

[Goto Video](#)



Infrastructure

🕒 15 - 20 minutes by walk

🚶 5 min by walk

🚶 3 minutes by walk

🚆 5 minutes to SPAR main station (open until 23:00)

🚶 20 minutes by public transport

The flat is situated between the main station and the inner city. This inevitably leads to an outstanding infrastructure e.g. the supermarket at the main station is open every day (incl Sundays and public holidays) until 11 pm.

You can reach the inner city within 15-20 minutes by foot. Most of the way is alongside the river Salzach.

Location

