



3 ROOM APARTMENT, 1100 VIENNA

Landschaften

Object number: STYI51

[View and rent online](#)

Period	18/04/ - 18/05/2026
Number of persons	2
Total incl. VAT.	€ 3.694,76
Security deposit	€ 2.800,00



Living space

82m²



Maximum occupancy

6 Persons



Complete accommodation [?]

1 Private bathroom 1 Separated bedroom 2 Shared bedrooms



3. floor



Check-in

08:00 - 22:00 Clock



Check-out

08:00 - 22:00 Clock

Sleeping options

Sleeping room



1x Double bed (1,80 m x 2 m)

Living & Sleeping 1



1x Sofa bed (2 persons)

Living & Sleeping 2



1x Sofa bed (2 persons)

Descripton of accommodation

The apartment Landschaften is located in the 10th district of Vienna, Antonsplatz (3rd floor, no elevator) and easily reachable by public transportation. The city center is only 10 minutes away.

The modern and fully furnished apartment with a size of 82m², has two spacious bed sitting rooms, a bedroom, a fully equipped kitchen, an anteroom, a bathroom (shower, washing machine and sauna) and a WC. The bed sitting rooms and the bedroom are accessible apart from each other. The apartment is therefore also ideal for flat sharing or as staff apartment. The apartment has a sauna to fulfil extraordinary desires of living.

The apartment is designed with artworks of Gerda Matejka-Felden.

All rates include the stay of max. two persons, the minimum stay is 1 week.

The weekly price applies for a stay of minimum 2 weeks.

From 3 months and 1 day there is no local tax.

Equipment & Features

Basic equipment

- Internet/Wifi
- Private washing machine
- Towels
- Vacuum cleaner
- Hairdryer
- TV
- Bedclothes
- Private toilet
- Iron & ironing board

Wellness

- Sauna

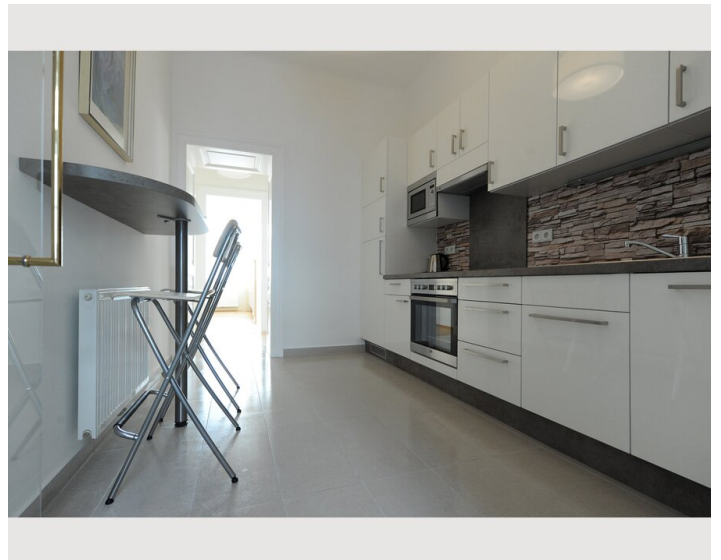
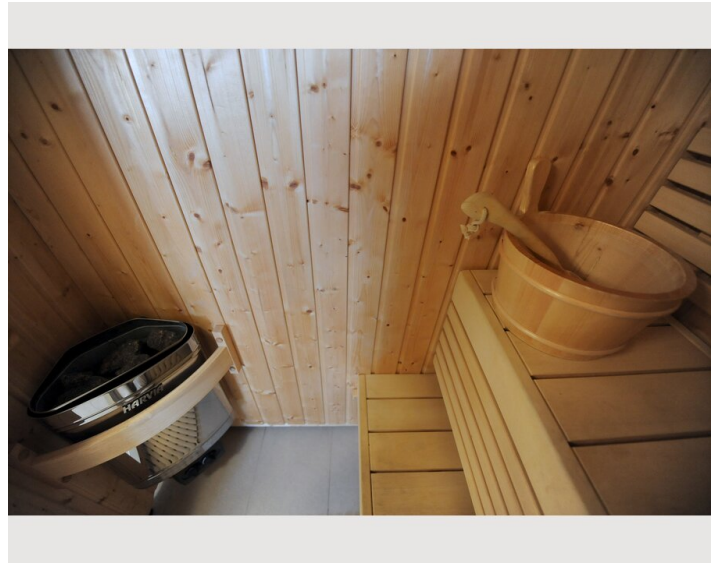
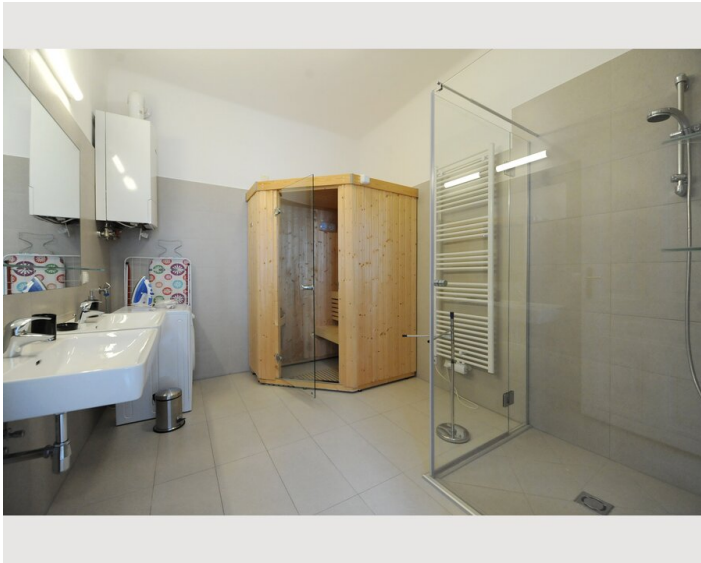
Kitchen

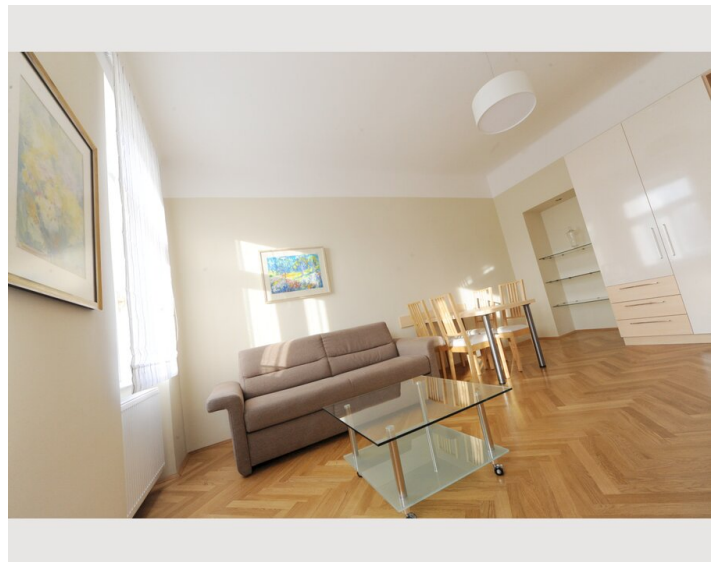
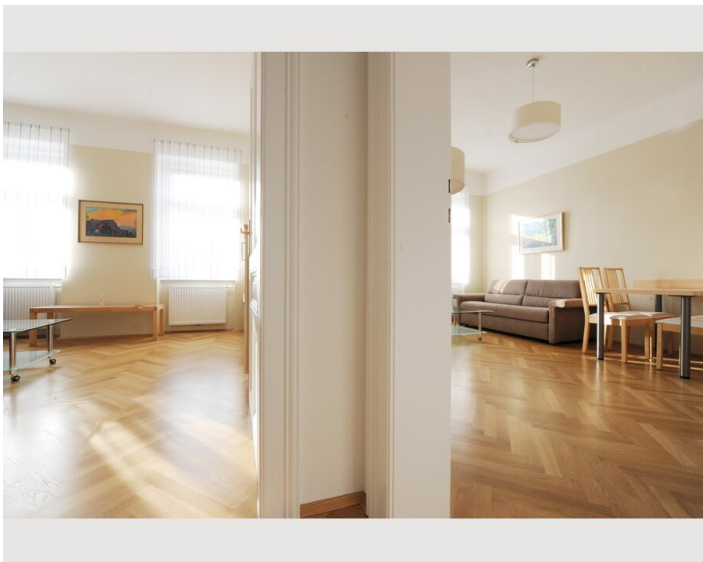
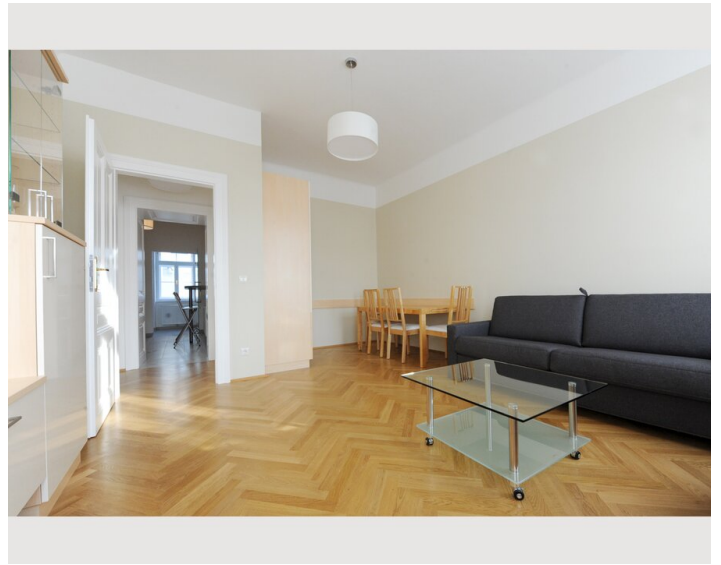
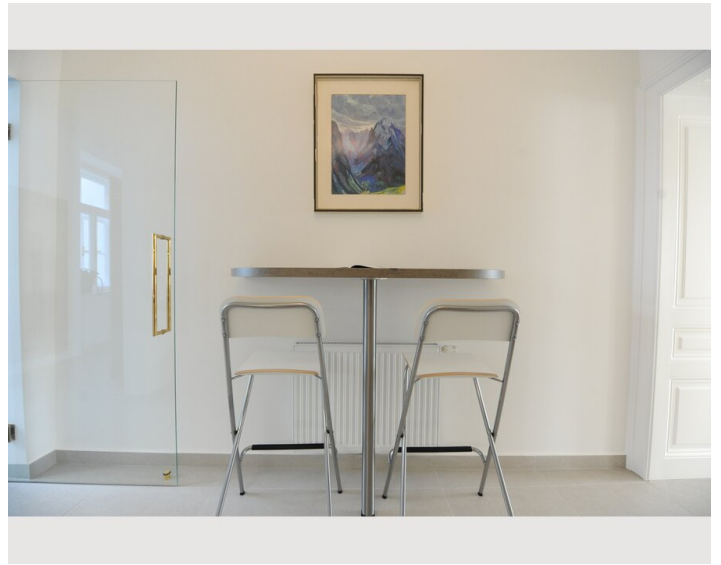
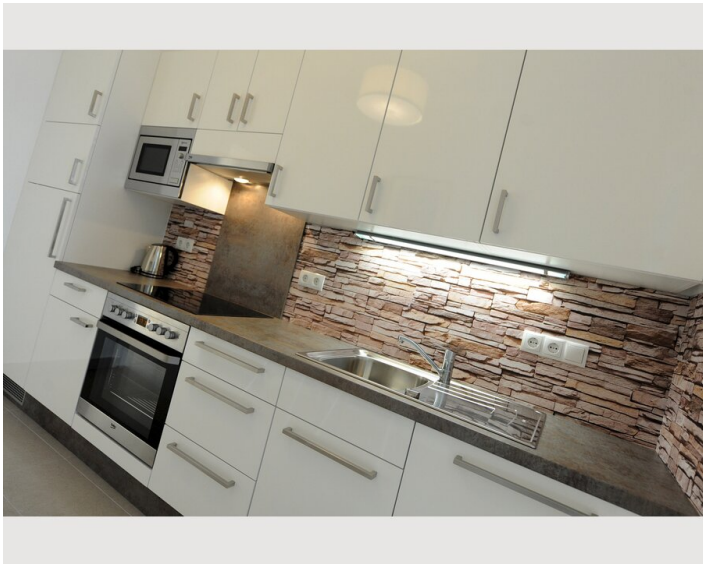
- Private kitchen
- Coffee machine
- Microwave
- Glasses/Tableware
- Dishwasher

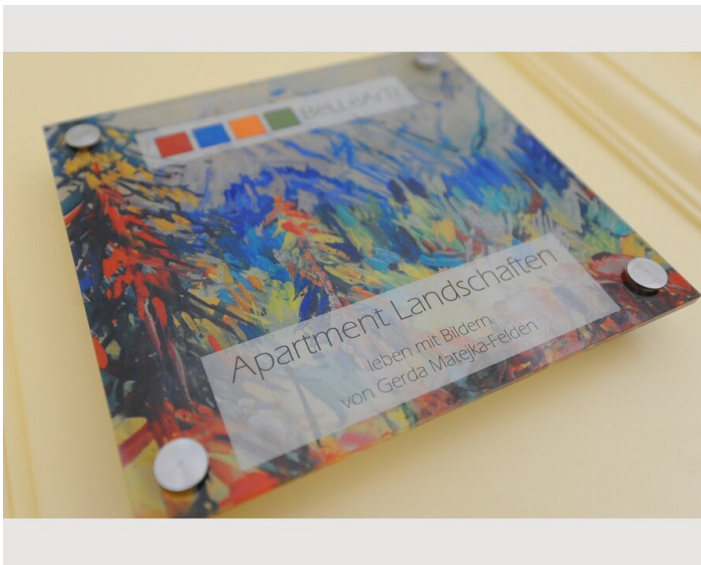
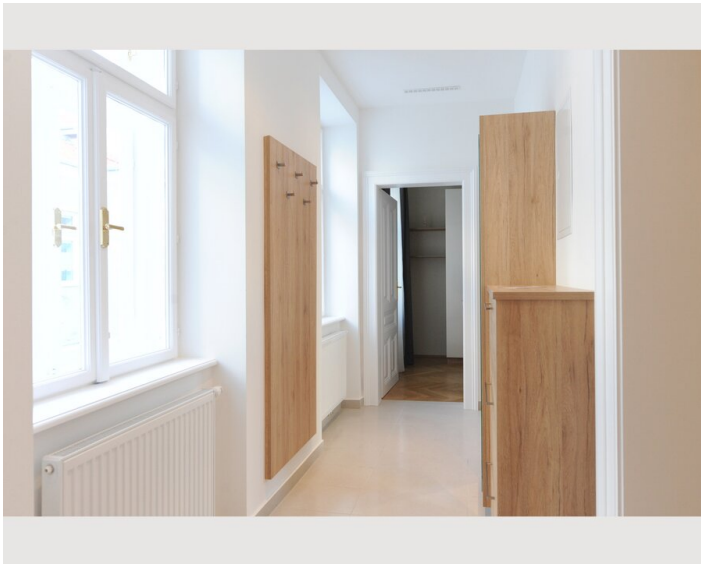
Informations

- Smoking not allowed
- Pets forbidden
- Bicycle room free of charge
- Short-term parking zone subject to a charge
- Regular cleaning at extra cost

Picture gallery







Infrastructure



Location

