



2 ROOM APARTMENT, 1020 VIENNA

## Your Elegant Designer Apartment Close to the Very City Center

Object number: JAHE4

[View and rent online](#)

The flat is located in Scholzgasse, a connection from the Danube Canal to the Augarten. There is a wide range of restaurants, leisure facilities and transport links. There are numerous shopping and leisure facilities around Scholzgasse. Just around t

<b>Period</b>	28/06/ - 28/07/2026
<b>Number of persons</b>	2
<b>Total incl. VAT.</b>	€ 1.581,29
<b>Security deposit</b>	€ 1.200,00



### Living space

45m<sup>2</sup>



### Maximum occupancy

4 Persons



### Complete accommodation <sup>?</sup>

1 Private bathroom 1 Separated bedroom



### 3. floor

Elevator available



### Check-in

12:00 - 23:00 Clock



### Check-out

00:00 - 11:00 Clock

## Sleeping options

### Sleeping room



1x Double bed (1,80 m x 2 m)



1x Sofa bed (2 persons)

## Description of accommodation

Your designer apartment in a great living area, especially for long term stays

Close to the Augarten Park: A light-filled apartment, really big on style!

Fully equipped with everything what makes a stay comfortable, you will find yourself in a safe and quiet neighborhood of Vienna.

Close to public Metro stop Rossauer Lände, 10 minutes only to Vienna's very city center.

### Equipment & Features



#### Basic equipment

- Balcony
- TV
- Bedclothes
- Private toilet
- Internet/Wifi
- Washing machine
- Towels
- Hairdryer



#### Kitchen

- Private kitchen
- Coffee machine
- Microwave
- Glasses/Tableware
- Dishwasher

### Informations

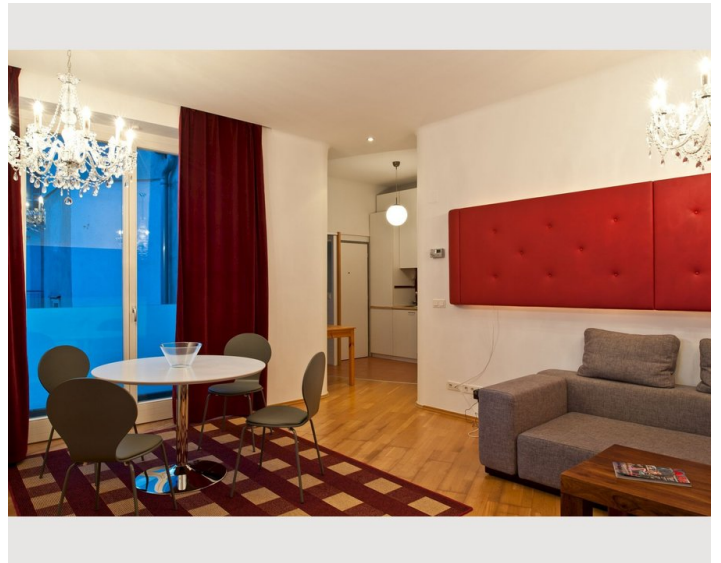
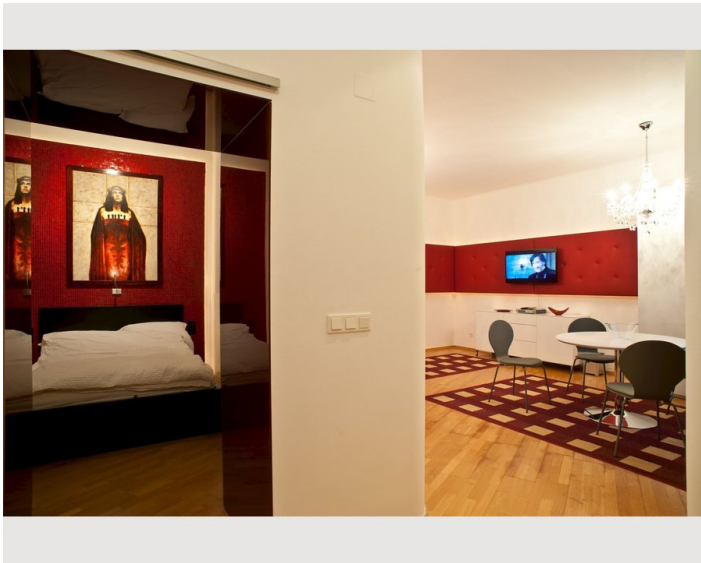
- Smoking not allowed
- Pets forbidden
- Short-term parking zone subject to a charge

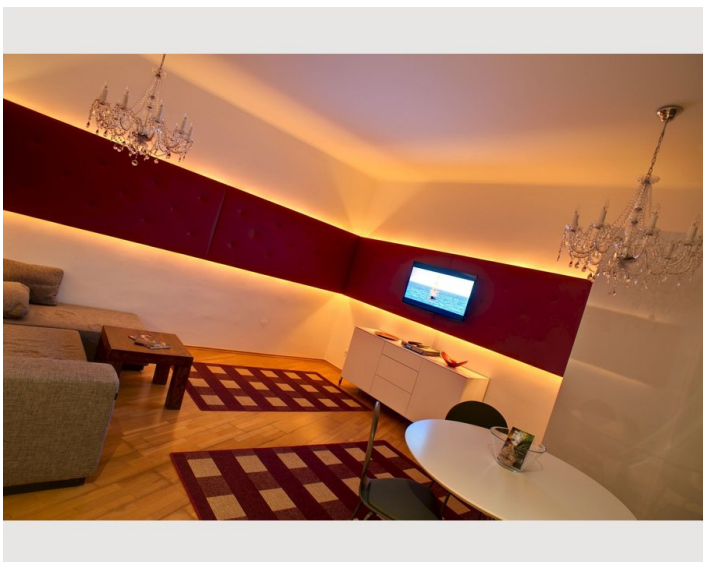
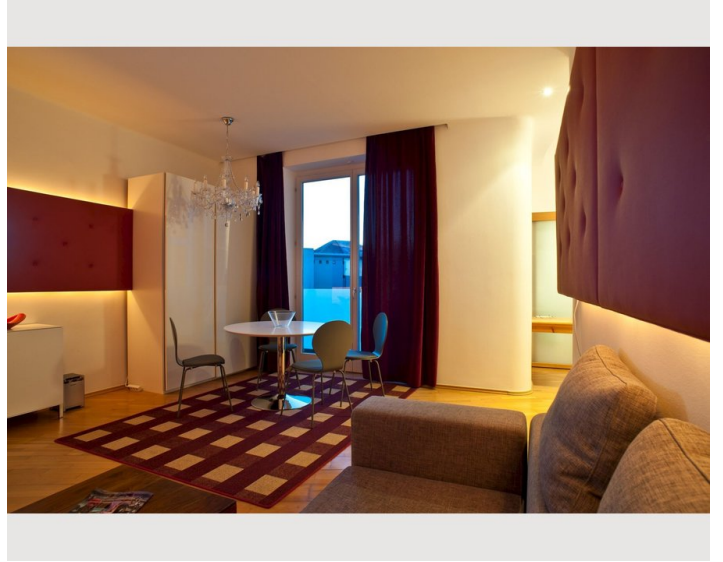
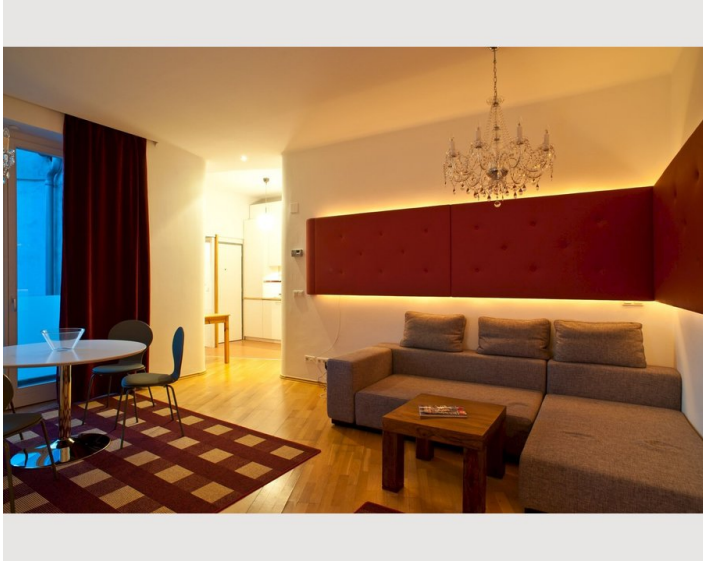
### Additional services

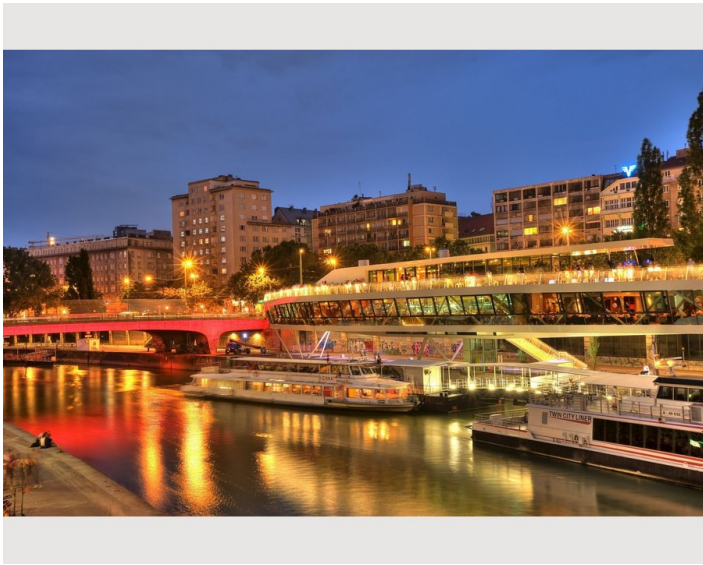
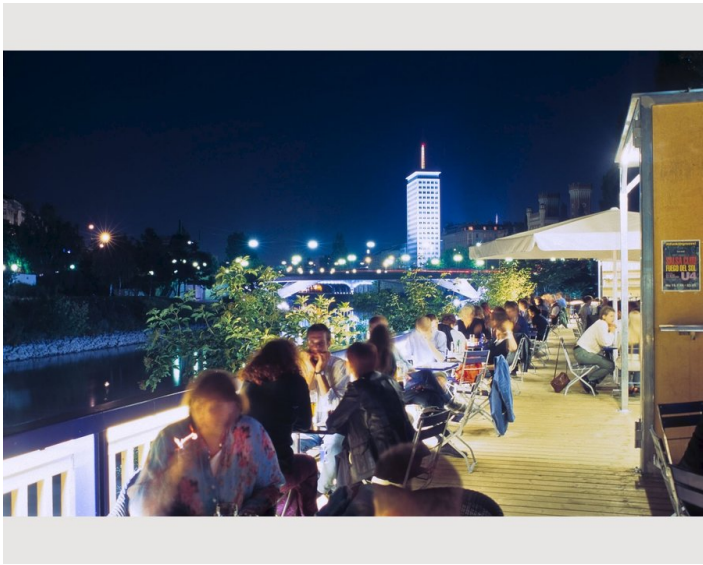
- Regular cleaning

All prices are gross per month - billing is done directly with the lessor.

### Picture gallery







### Infrastructure

📍 Two Underground stops away

Close to public Metro stop Rossauer Lände, 10 minutes only to Vienna's very city center. Supermarket is in the block.

## Location

