

STUDIO APARTMENT, 5161 ELIXHAUSEN

## Apartment in Elixhausen on the outskirts of Salzburg for your temporary homebase

Object number: TREK5

[View and rent online](#)

This one room apartment is situated on the second floor of a one family house (entrance through the family house) in Elixhausen and is equipped with all necessary amenities. There is room for 1 person and the equipment is very comfortable.

<b>Period</b>	21/12/2025 - 21/01/2026
<b>Number of persons</b>	2
<b>Total incl. VAT.</b>	€ 1.034,38
<b>Security deposit</b>	€ 800,00



### Living space

37m<sup>2</sup>



### Maximum occupancy

1 Person



### Complete accommodation <sup>?</sup>

1 Private bathroom 1 Living-Sleepingroom



### 2. floor



### Check-in

15:00 - 18:00 Clock



### Check-out

08:00 - 13:00 Clock

## Sleeping options

### Living and sleeping



1x Double bed (1,60 m x 2 m)

## Description of accommodation

The room is very bright and high and you have a wonderful view of the surrounding mountains.

There is also a bathroom with a shower and a toilet/bidet.

The garden of the house can be used as well.

A parking space is directly in front of the house.

Please note, we are a non-smoking household.

### Equipment & Features



#### Basic equipment

- Internet/Wifi
- Community washing machine
- Towels
- Private parking space
- Iron & ironing board
- TV
- Bedclothes
- Private toilet
- Vacuum cleaner



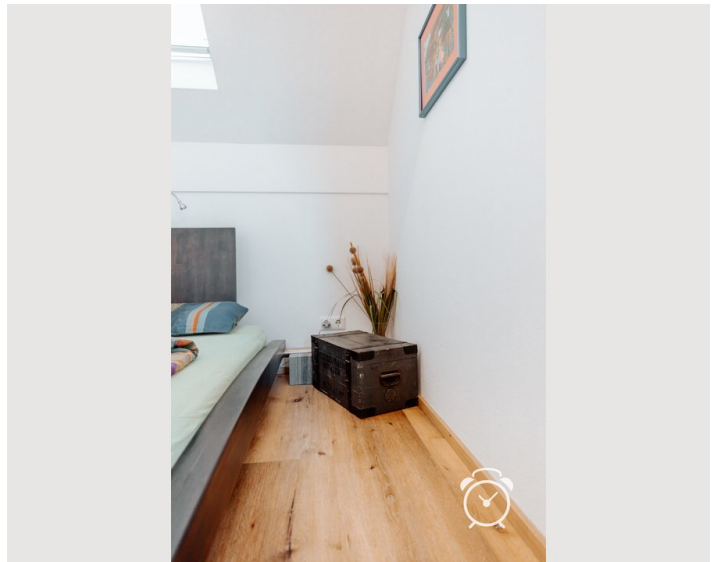
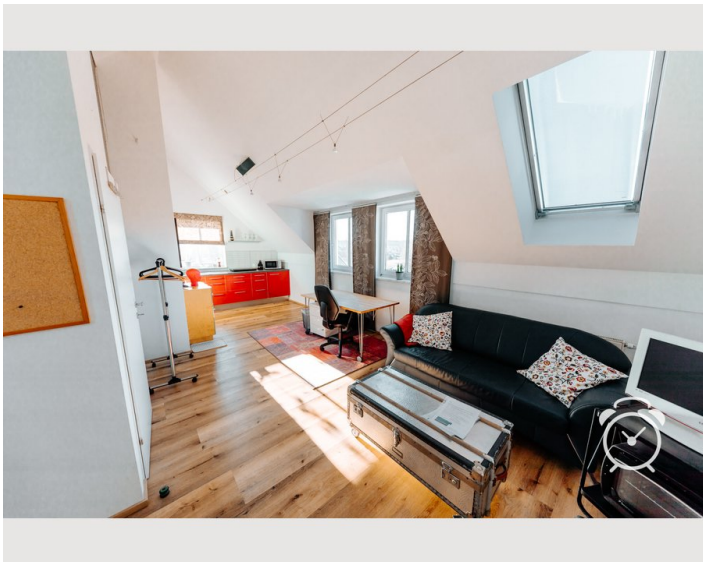
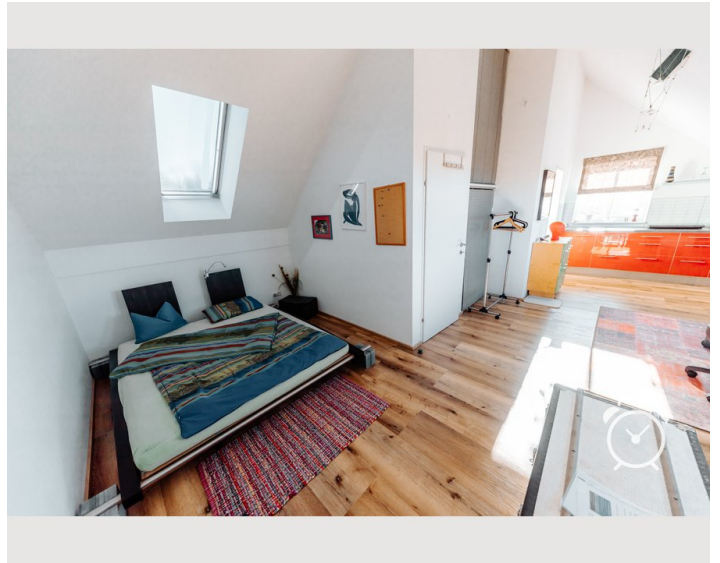
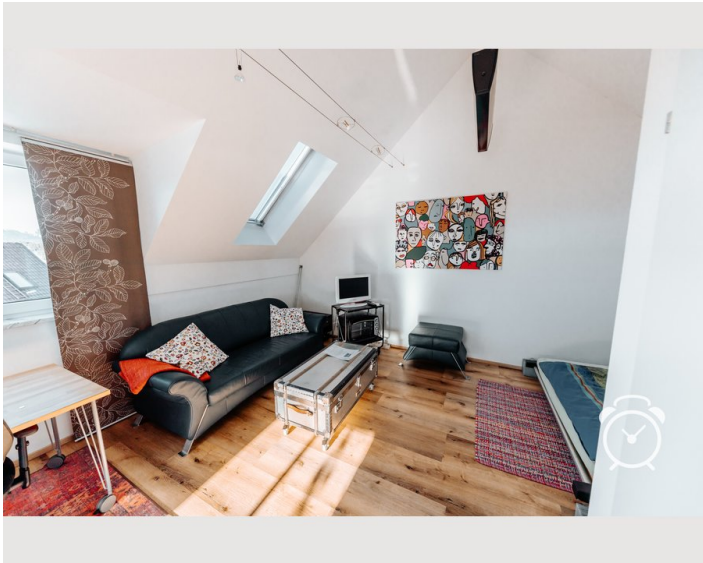
#### Kitchen

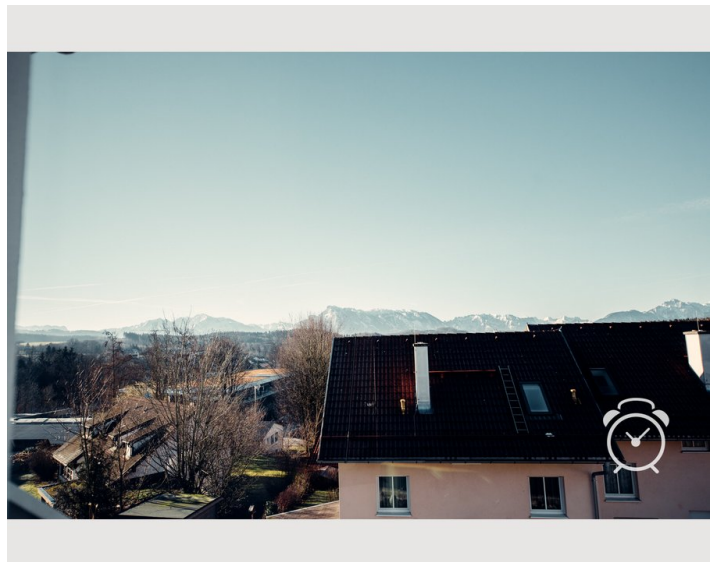
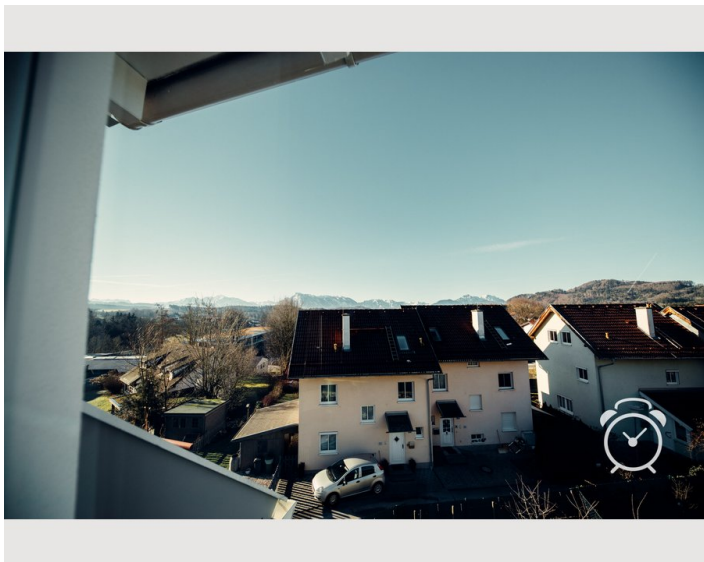
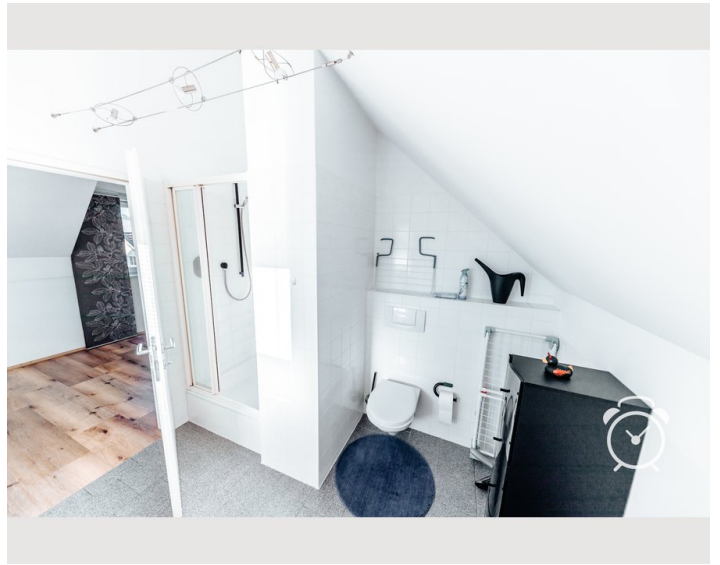
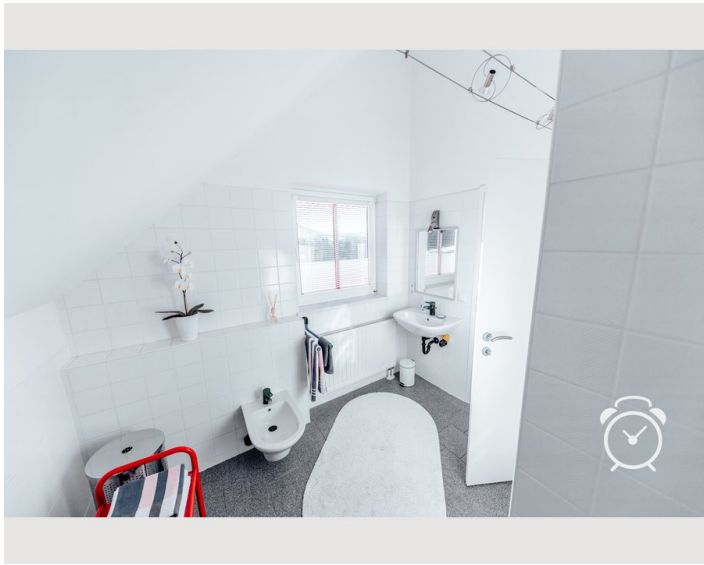
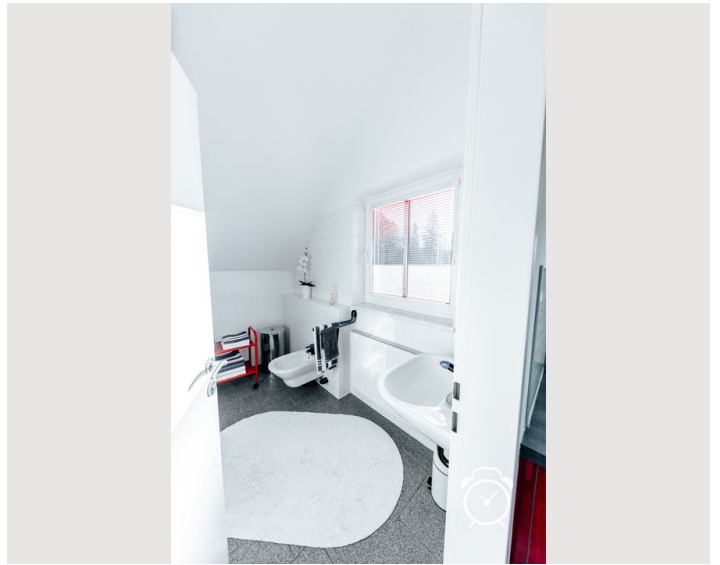
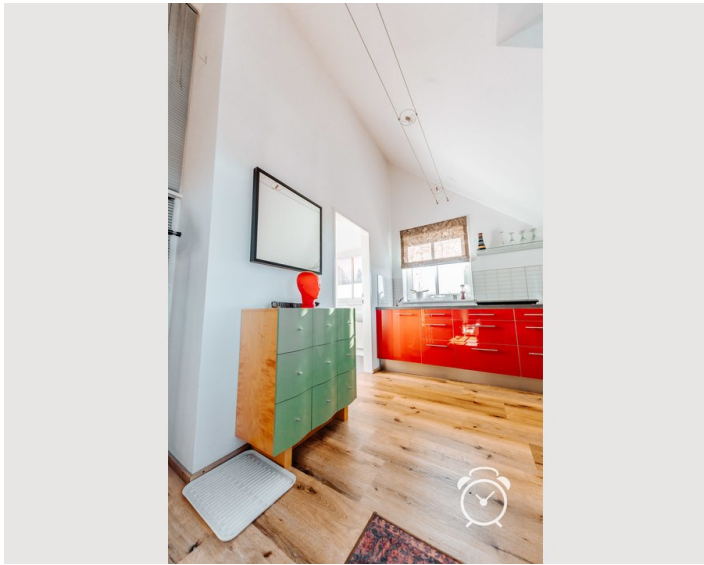
- Private kitchen
- Glasses/Tableware
- Microwave
- Cooking utensils
- Espresso machine

## Informations

- Smoking not allowed
- Pets forbidden
- Desk/Workplace

## Picture gallery

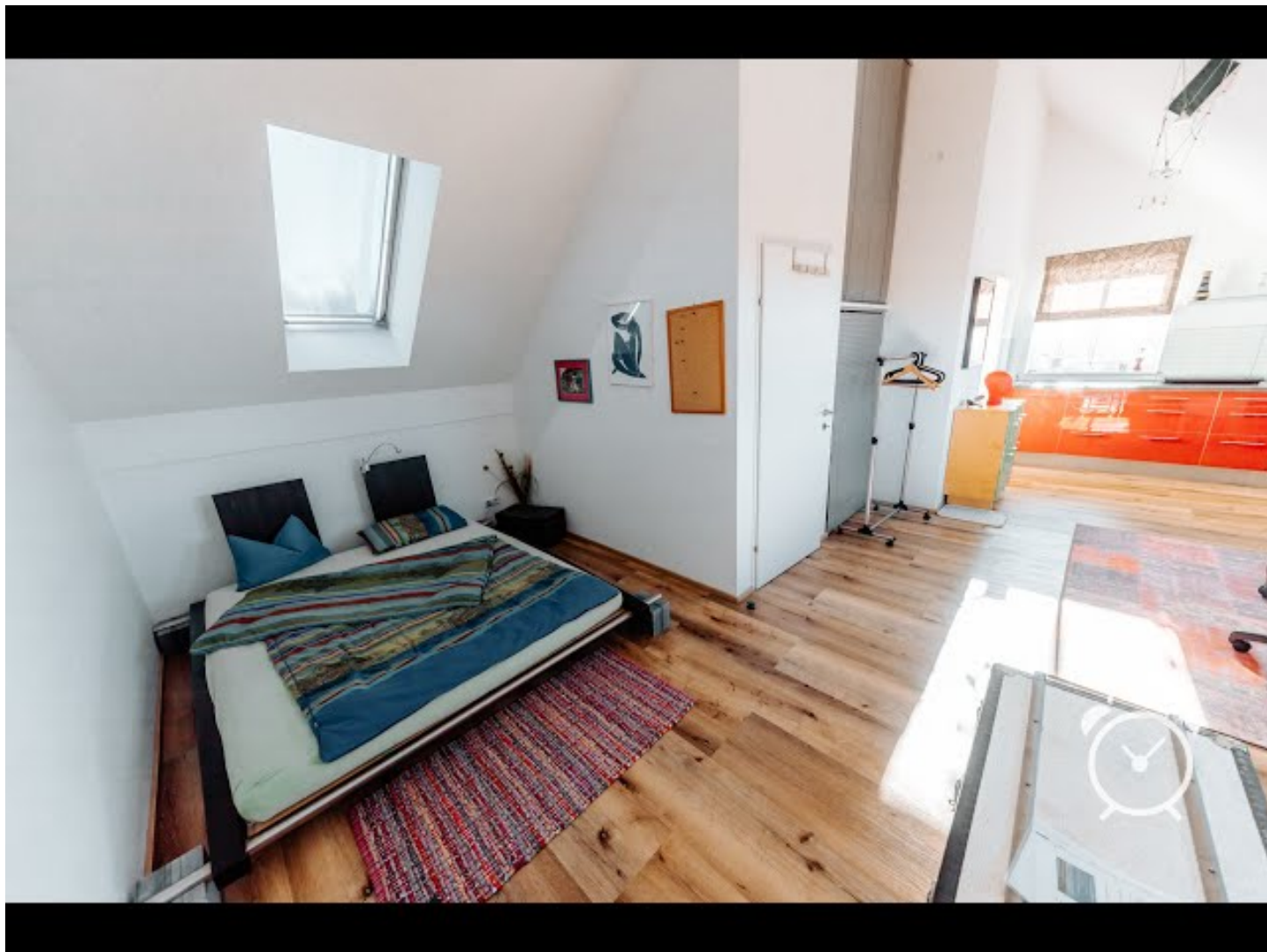






## Video

Goto Video



### Infrastructure



Our village is conveniently located with good bus connections.

You have only 8 km to the city centre, in 7 km you are at the main railway station and after only 5 km you reach the motorway exit Salzburg Nord.

It is 12 km to the Salzburg Airport and in 7 km you are at the exhibition grounds.

After only 5 km you have reached the Salzburg Seeland.

In about 30 minutes you can reach the city by bike (continuous cycle path).

In Elixhausen there are two supermarkets, bakery, butcher's shop, doctors, pharmacy and several restaurants.

Location

