



4 ROOM APARTMENT AND MORE, 4020 LINZ

XDOM Flat to dream of

Object number: LASR1

[View and rent online](#)

Period	17/07/ - 17/08/2025
Number of persons	2
Total incl. VAT.	€ 3.630,53
Security deposit	€ 2.600,00

simply the best Minimum rental period 14 days, no commission, no redemption - all inclusive. The perfect, discreet solution for satisfying a short-term, exclusive need for living



Living space

110m²



Maximum occupancy

6 Persons



Complete accommodation [?]

1 private bathroom 2 Separated bedrooms 1 Living-Sleepingroom



Ground floor

Elevator available



Check-in

14:00 - 18:00 Clock



Check-out

10:00 - 12:00 Clock

Sleeping options

Bedroom 1



1x Double bed (1,80 m x 2 m)



1x Children/baby bed

Bedroom 2



1x Double bed (1,60 m x 2 m)

Living and sleeping



1x Sofa bed (2 persons)


Descripton of accommodation

The exclusive, barrier-free city apartment is on the ground floor of a Biedermeier city palace.
The house has undergone a general renovation and meets exclusive living needs!
The generously designed, large, light-flooded vaulted rooms with a wide view of the cathedral and cathedral square are particularly attractive.
Charming, lovingly designed ambience, brick floor with underfloor heating, district heating, window fronts with triple glazing.
You can enjoy the pleasant warmth of the brick floor.

The living space of approx. 114m² is divided into a hall, dining-kitchen area, living room, 2 bedrooms, separate toilet, handicapped accessible bathroom with bathtub, shower, 2nd toilet, storage room.


The apartment with kitchen is fully furnished and ready to move in.
The courtyard with Italian flair leads to the garden, which gives this residence the special touch of an oasis of calm and thus enables "living and living" - in the middle of the city and yet in the countryside.
A bicycle storage room is also available at general facilities.
The property has a directly connected and barrier-free underground car park.

Equipment & Features

Basic equipment


- Garden sharing
- TV
- Private dryer
- Towels
- Vacuum cleaner
- Cleaning utensils

- Internet/Wifi
- Private washing machine
- Bedclothes
- Private toilet
- Iron & ironing board
- Hairdryer

First supply

- Toilet paper
- Soap

- shampoo
- Nespresso capsules

Kitchen

- Private kitchen
- Glasses/Tableware
- Dishwasher

- Cooking utensils
- Espresso machine
- Microwave

Tel.: +43 662 23 10 55 · Email: office@kurzzeitmiete.at · www.kurzzeitmiete.at

Informations

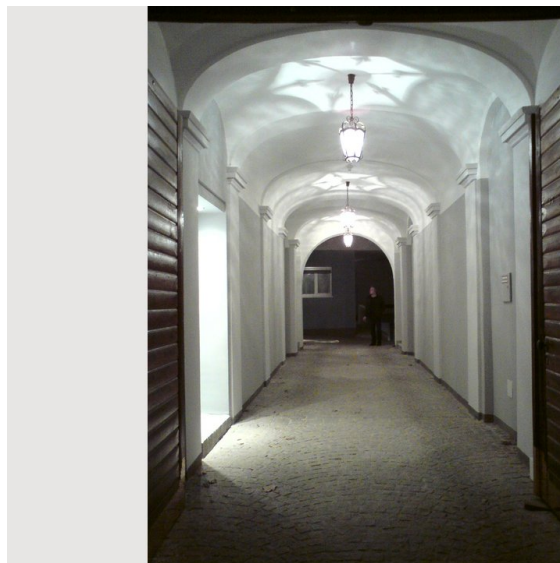
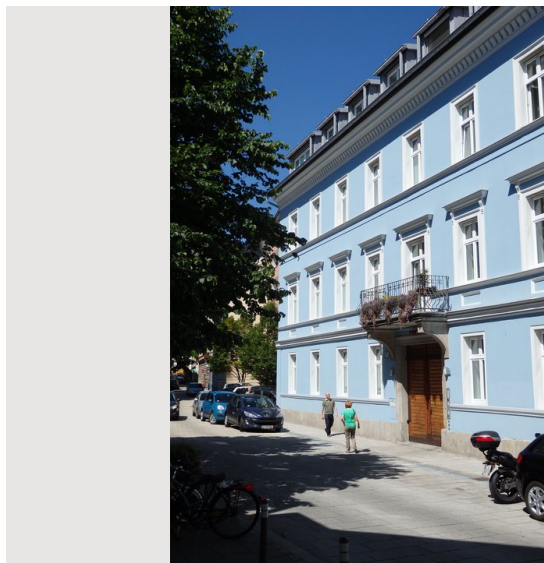
- Suitable for children
- Short-term parking zone subject to a charge
- Private entrance
- Regular cleaning at extra cost
- Smoking not allowed
- Desk/Workplace
- Pets forbidden
- Bicycle room free of charge

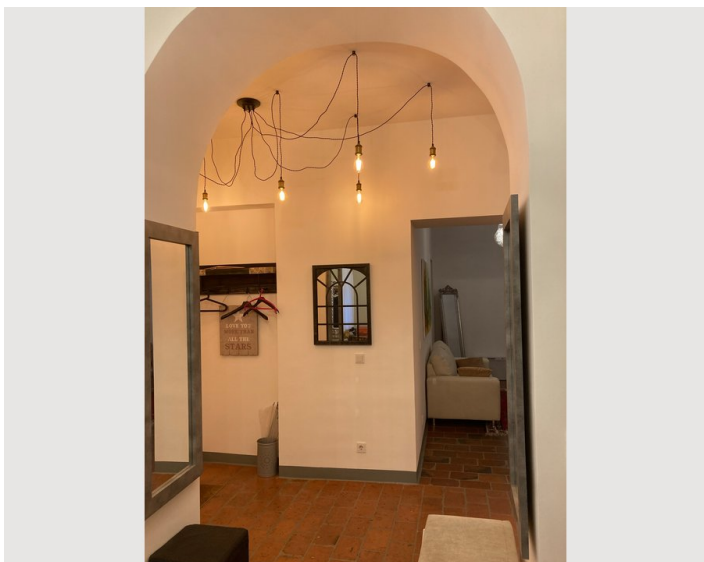
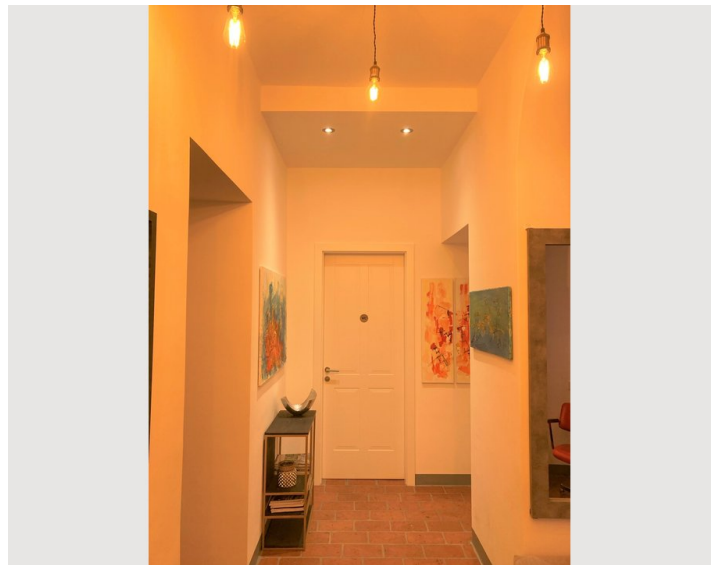
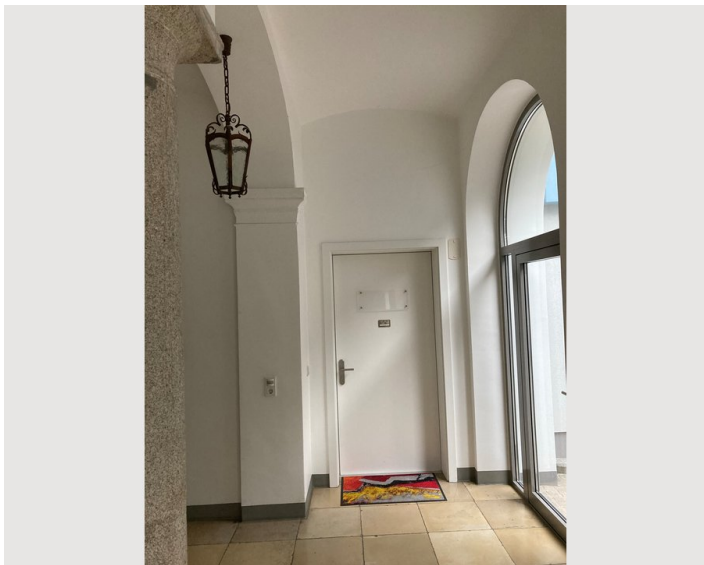
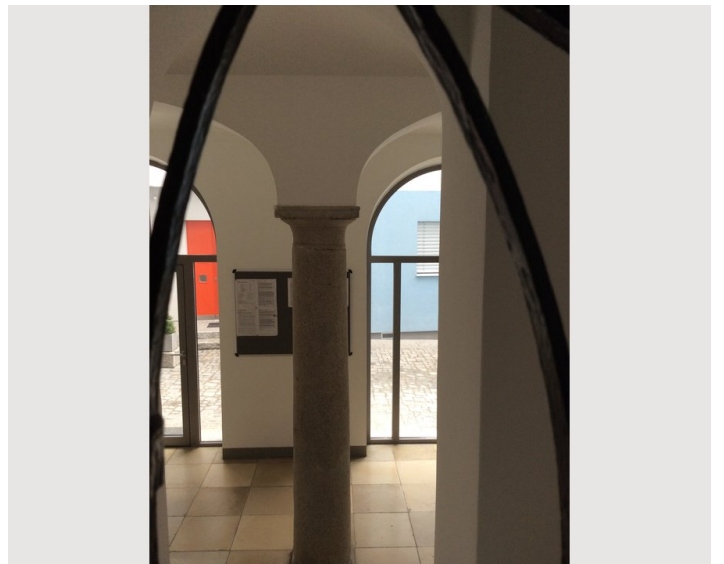
Additional services

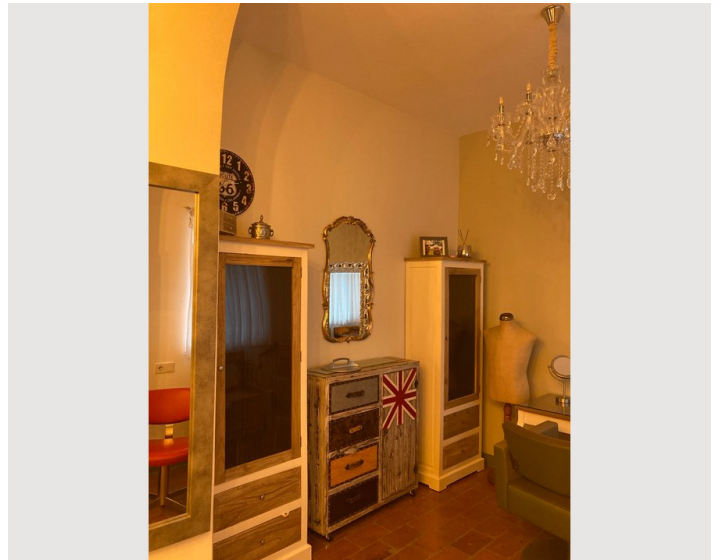
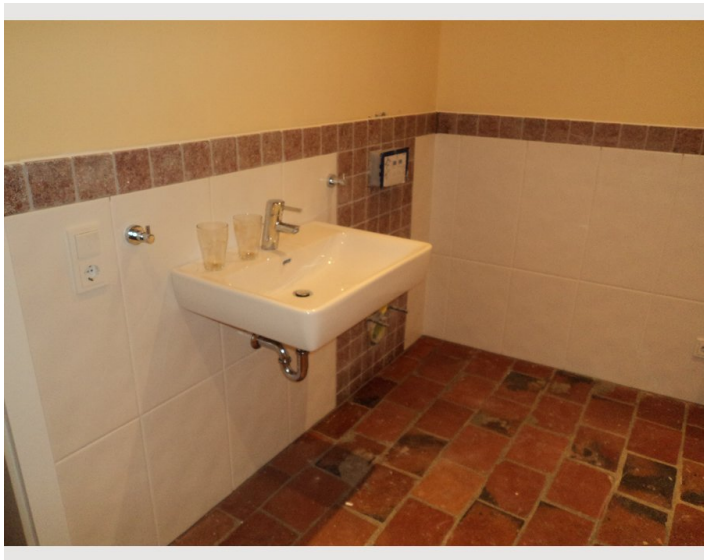
- underground car park (€ 180,00)

All prices are gross per month - billing is done directly with the lessor.

Picture gallery









Infrastructure

📍 right in the center, opposite the cathedral

🚶 3 min. by feet

🚇 15 min. by feet

🚗 1 min. by feet

Located in a preferred inner city location of the provincial capital Linz, directly opposite the main entrance of the neo-Gothic Mariendom, with an unobstructed view over the Domplatz, the apartment is characterized by optimal infrastructural connections, in the immediate vicinity there are several public underground car parks. Everything within walking distance, shopping, theaters, hospitals, schools, Danube Park
Train station in 15 minutes on foot

Location

