



2 ROOM APARTMENT, 1030 VIENNA

## Fully equipped apartment in the heart of Vienna

Object number: FLUH1

[View and rent online](#)

<b>Period</b>	09/12/2025 - 09/01/2026
<b>Number of persons</b>	2
<b>Total</b> incl. VAT.	€ 1.481,16
Security deposit	€ 1.100,00

Beautiful charming flat in the heart of Vienna. Centrally located nearby Belvedere Palace and Botanic Garden. Space for up to 4 people. Completely renovated and fully equipped. Personal interior character. Perfect WiFi connection. Nice roof top.



### Living space

46m<sup>2</sup>



### Maximum occupancy

4 Persons



### Complete accommodation <sup>?</sup>

1 Private bathroom 1 Separated bedroom 1 Living-Sleepingroom



### Ground floor



### Check-in

08:00 - 22:00 Clock



### Check-out

10:00 - 15:00 Clock

## Sleeping options

### Sleeping room



1x Double bed (1,60 m x 2 m)

### Living and sleeping



1x Sofa bed (2 persons)

## Descripton of accommodation

The apartment is centrally located nearby the Belvedere palace and Botanic Garden in the third district and offers enough space for up to 4 people. Enjoy the comfort of a perfectly new and fully equipped bathroom and kitchen, as the apartment was completely renovated in March 2020 and has a personal interior character.

There is a bedroom with high ceilings and a Queensize bed (160x200cm). The living room offers a high-quality innerspring sofa bed (160x200cm), TV with Netflix, Fire TV stick and Amazon Prime. Both rooms offer enough space for personal stuff. The kitchen is equipped with a refrigerator (including ice box), a washing machine, a stove with oven and a dishwasher. The apartment has perfect WiFi connection. You will find hairdryer, flat iron and vacuum cleaner as well as basic necessities. The apartment is bright and has high ceilings in both rooms and offers all utilities someone may need for a short or longer stay. As the kitchen and bathroom are fully equipped, you can start to feel at home right after your arrival.

There is a very nice roof top, where you can enjoy the view over Vienna and see the Belvedere palace. Please note, the roof top is used by all the inhabitants of the building and their furniture is not to use.

## Equipment & Features



### Basic equipment

- Roof-terrace
- TV
- Bedclothes
- Private toilet
- Iron & ironing board
- Hairdryer
- Internet/Wifi
- Private washing machine
- Towels
- Vacuum cleaner
- Cleaning utensils



### First supply

- Toilet paper
- Soap
- Fridge filling on request
- shampoo
- Nespresso capsules



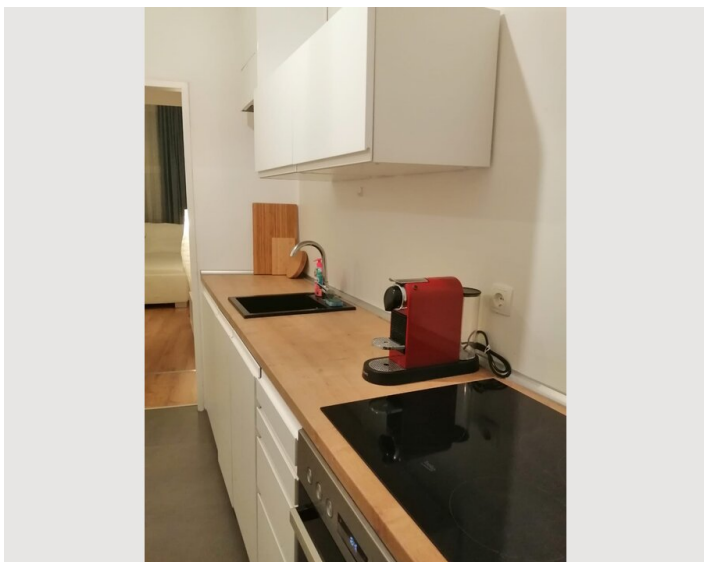
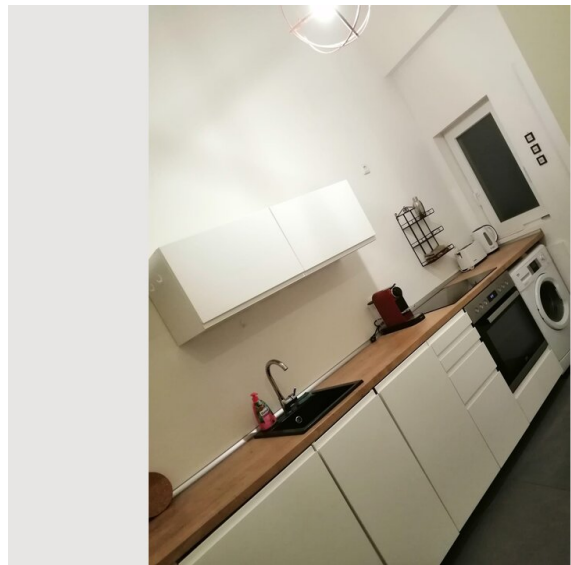
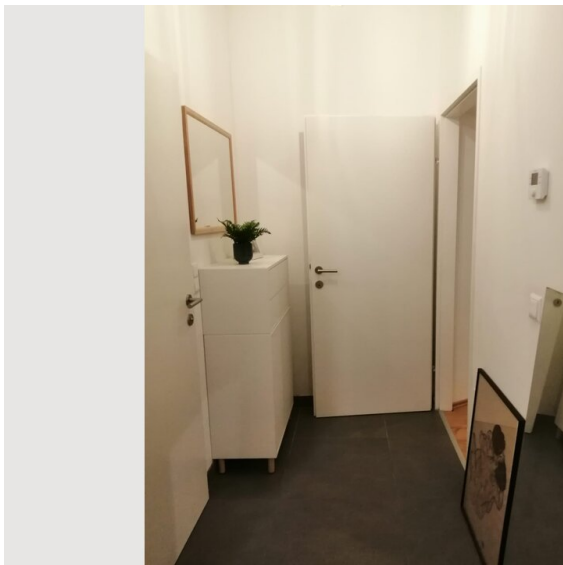
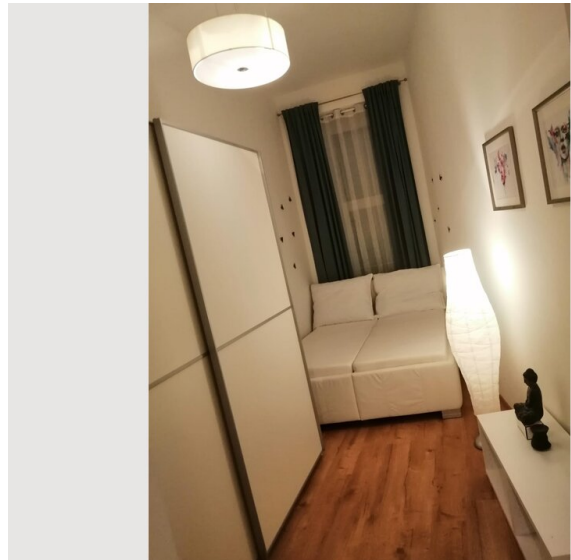
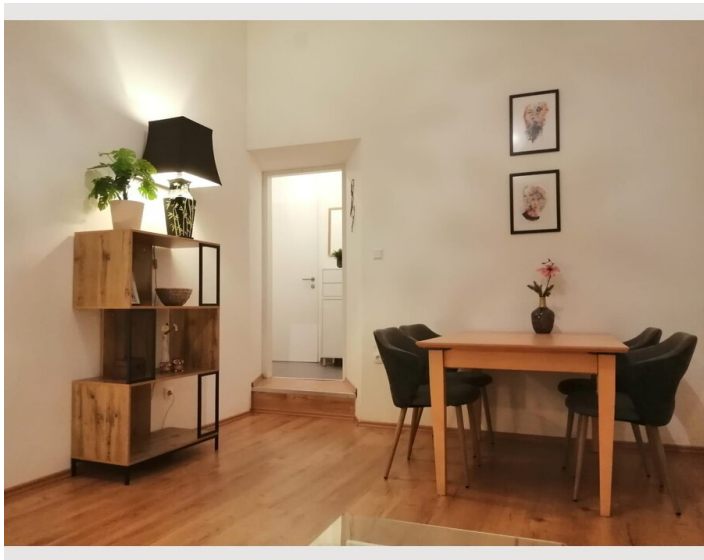
### Kitchen

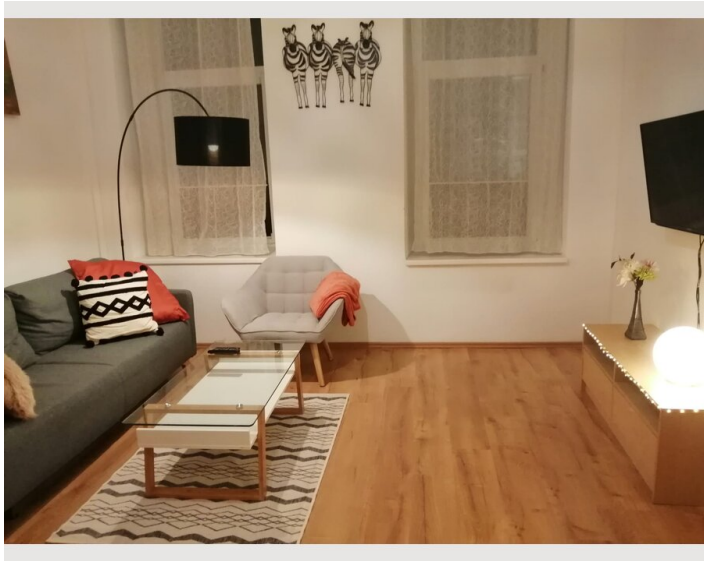
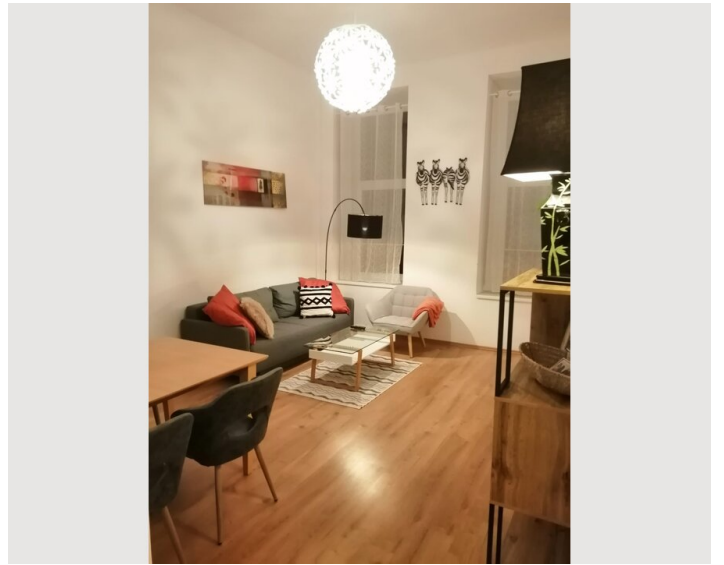
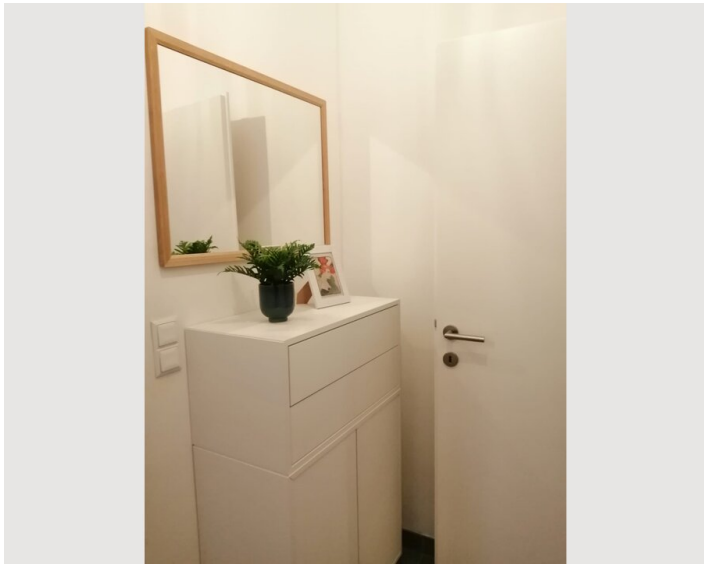
- Private kitchen
- Glasses/Tableware
- Filter coffee
- Microwave
- Cooking utensils
- Espresso machine
- Dishwasher

## Informations


- Suitable for construction workers
- Short-term parking zone subject to a charge
- Pets on request
- Smoking not allowed
- Private entrance
- Regular cleaning at extra cost

## Picture gallery







### Infrastructure

 Rennweg, walking distance

 many markets very close by

 Central Station, walking distance or tram

 Center can be reached by foot

 directly with train

---

Close to train station Rennweg, direct connection to AIRPORT and Vienna Central Train Station.

☆ Tram lines and where they go to ☆

O: Central Train Station, Landstraße / Wien Mitte

1: Schwedenplatz

18: Westbahnhof

71: Parlament, City Hall, Ring, Karlsplatz

☆ Grocery shopping and shops ☆

Billa, Penny, Pharmacy, Tobacco (2 minutes walk)

Hofer, Asia Shop, Textile cleaning (5 minutes walk)



## Location

