

2 ZIMMER WOHNUNG, 8010 GRAZ

Modern Apartment close to Congress Center, TU-Uni and 7 minutes to Center + Netflix!

Object number: Graz 1

[View and rent online](#)

The brand new built apartment is located on the Conrad-von-Hötzendorf-Straße, very close to the Messe Congress Graz (convention center) and the Markur-Arena. It only takes a few minutes by public transports to get to the main square.

Period	16/06/ - 16/07/2025
Number of persons	2
Total incl. VAT.	€ 2.116,55
Security deposit	€ 1.700,00



Living space

57m²



Maximum occupancy

4 Persons



Complete accommodation [?]

1 private bathroom 1 Separated bedroom 1 Living-Sleepingroom



2. floor



Check-in

15:00 - 00:00 Clock



Check-out

00:00 - 10:00 Clock

Sleeping options

Sleeping room



1x Double bed (1,80 m x 2 m)

Living and sleeping



1x Sofa bed (2 persons)

Descripton of accommodation

A supermarket is located on the ground floor in the same building and many more shops are in walking distance. The apartment is completely new furnished with an exceptionally large balcony and a big king sized bed.

The apartment is located on the second floor of a centrally located building. It has the biggest balcony of the whole apartment complex, looking onto the Stadion Libenau(also known as the Merkur Arena) and in the meadow-covered inner courtyard of the residential building.

Free wifi, Netflix and Amazon Prime are included, furthermore we have some Books, Boardgames and a sound systems ready to use for you.

Bedroom: Bed size - 180 x 200 cm, pillows and blanket are included. Accommodation of a third or forth person is possible on the sofa bed. Full bedlinen are provided.

We provide a fully equipped Kitchen.

(Including: fridge, stove and oven, dishwasher, coffee machine, kettle, toaster, microwave and mixer and basic cook ingredients + many spices)

Bathroom: spacious bathroom with a full size bathtub, a washing machine, hairdryer, vacuum cleaner, Q-Tips, a first aid kit, fresh bath towels, shampoo + shower gel and emergency toothbrushes

The apartment also has an exceptionally large balcony (approx. 25m²) with a beautiful view of the greened inner courtyard.

Equipment features



Basic equipment

- Balcony
 - Music system/docking station
 - Private washing machine
 - Towels
 - Garage
 - Aircondition
 - Iron & ironing board
 - Hairdryer
 - Internet/Wifi
 - TV
 - Bedclothes
 - Private toilet
 - On the road without time limit without any cost
 - Vacuum cleaner
 - Cleaning utensils
-



First supply

- Toilet paper
 - Soap
 - shampoo
-



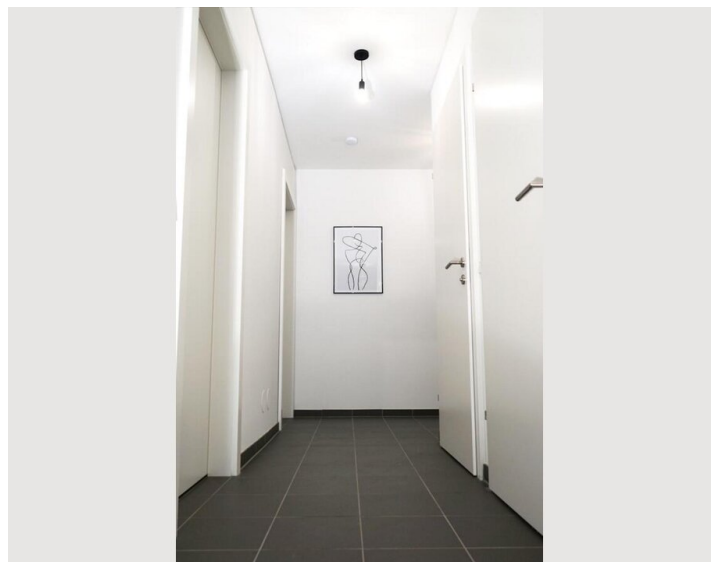
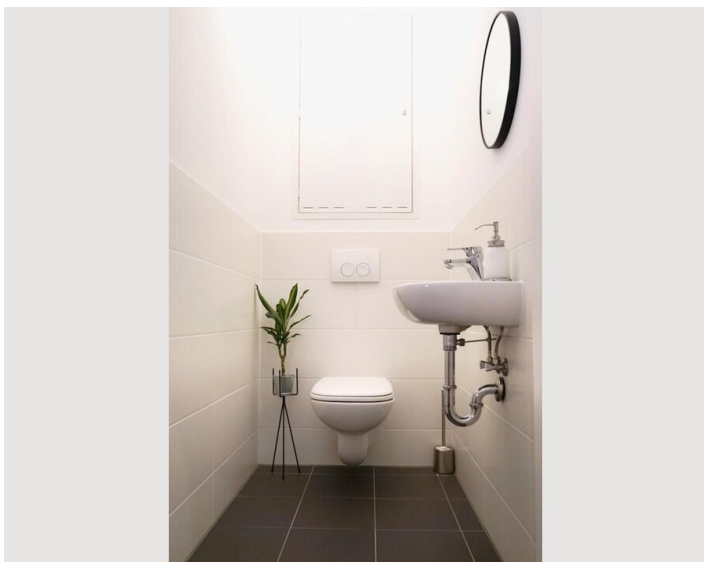
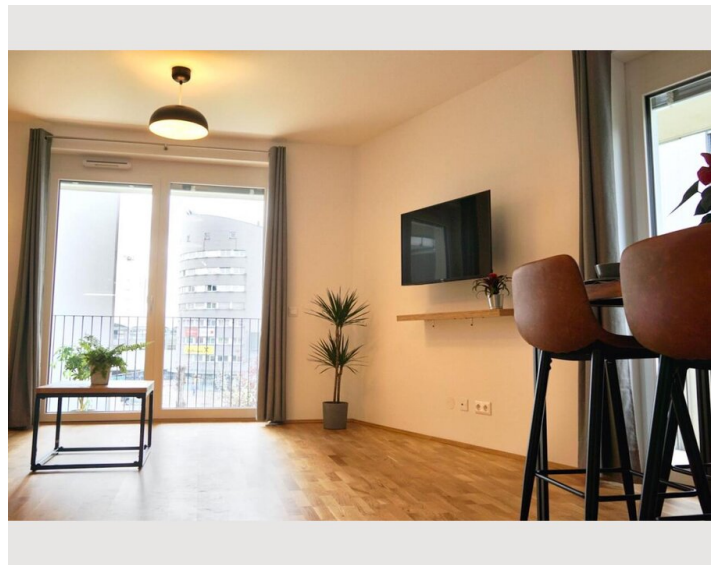
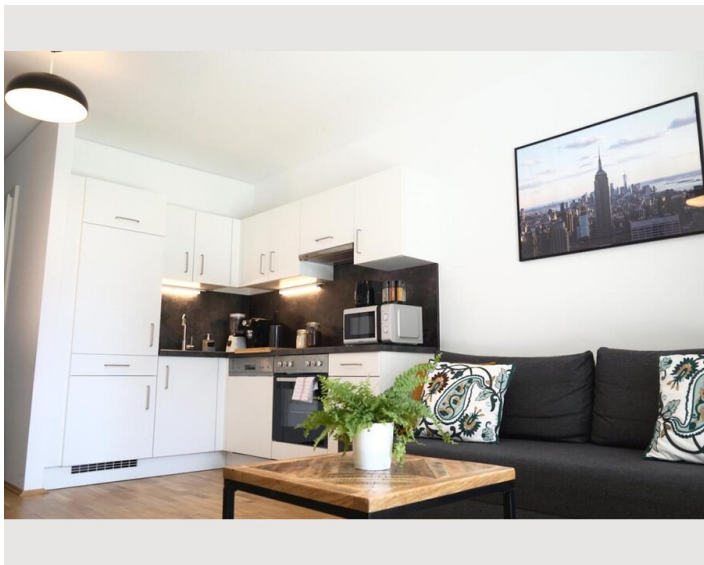
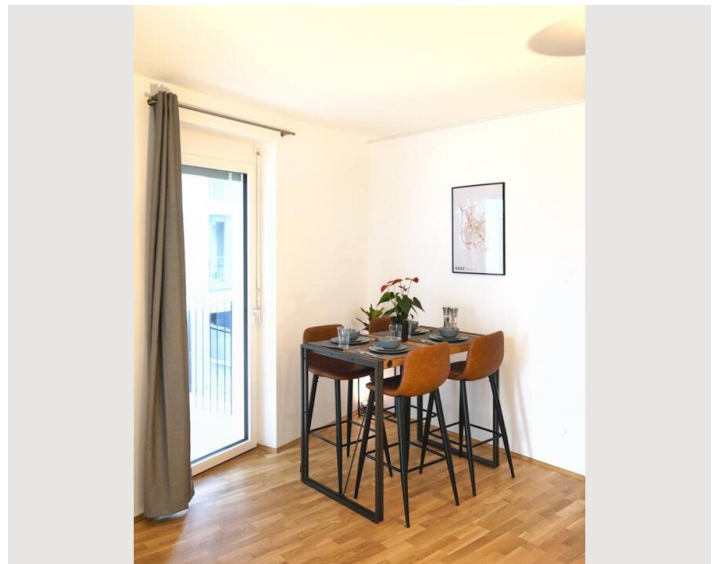
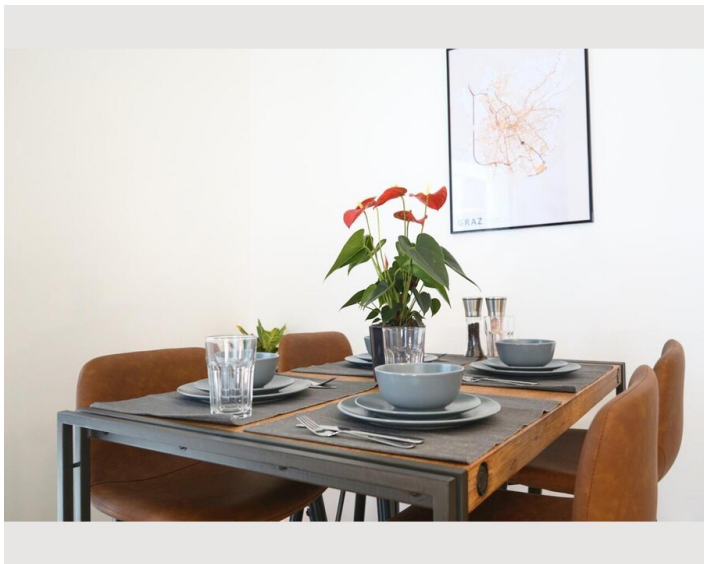
Kitchen

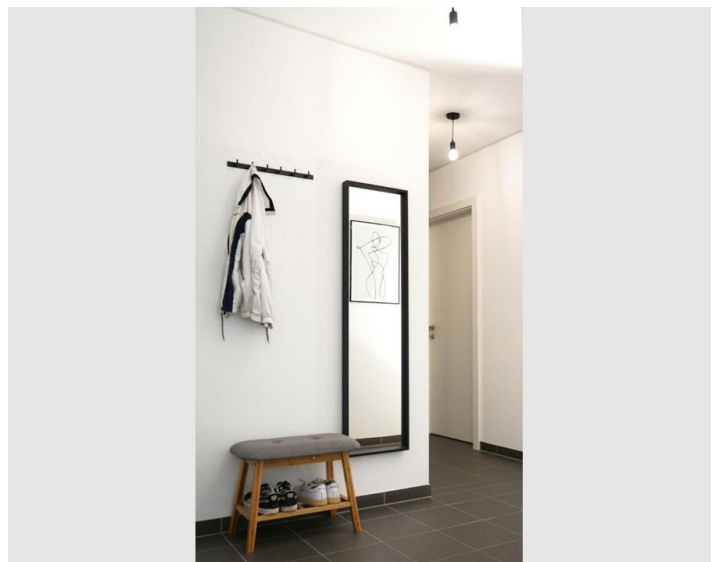
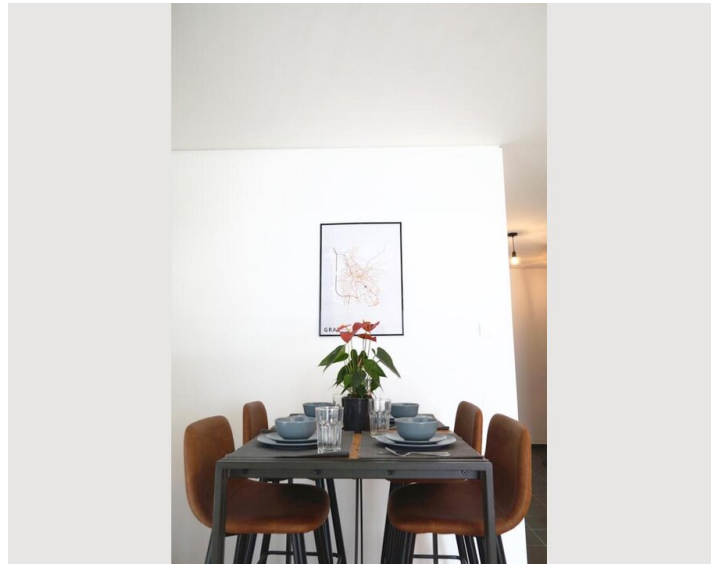
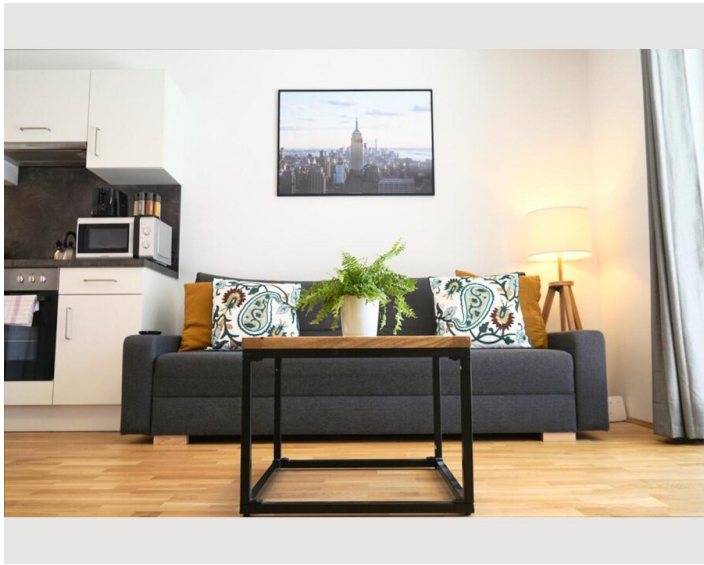
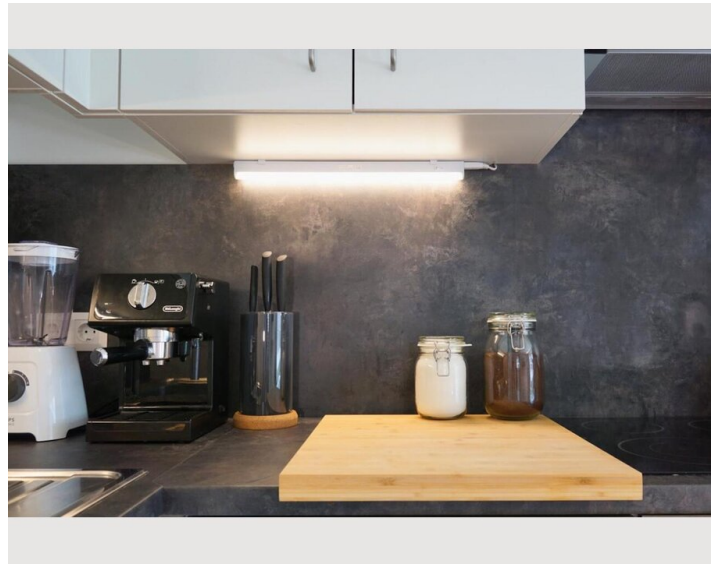
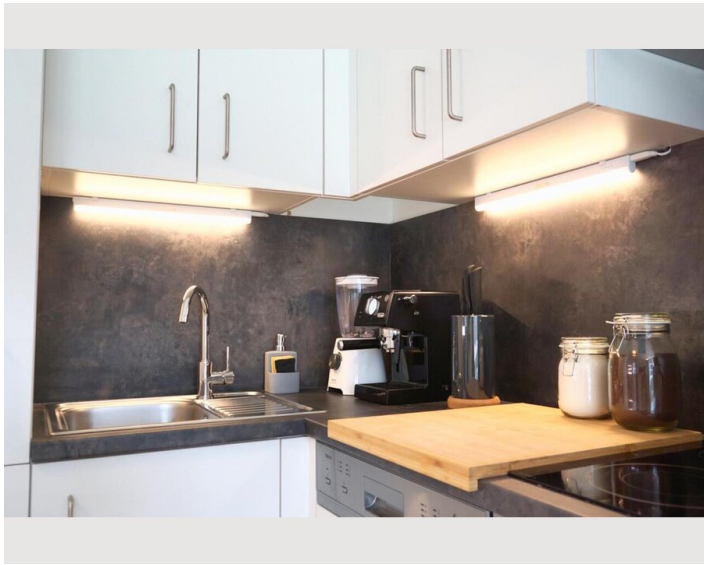
- Private kitchen
- Espresso machine
- Microwave
- Glasses/Tableware
- Dishwasher

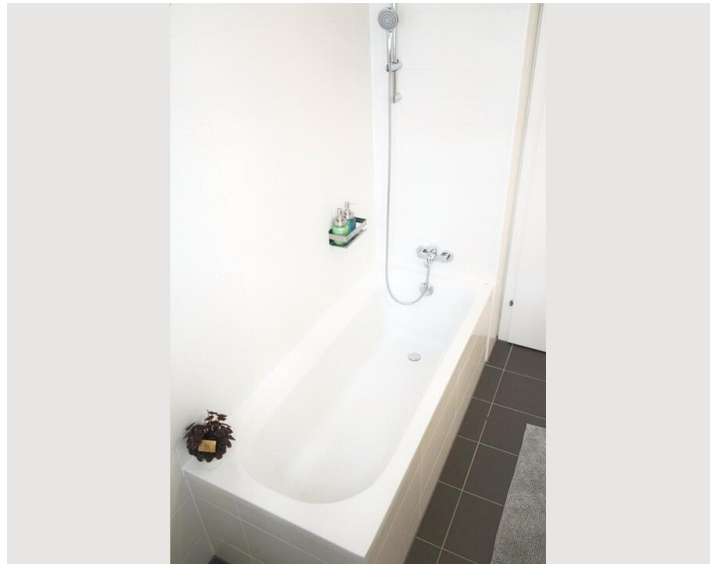
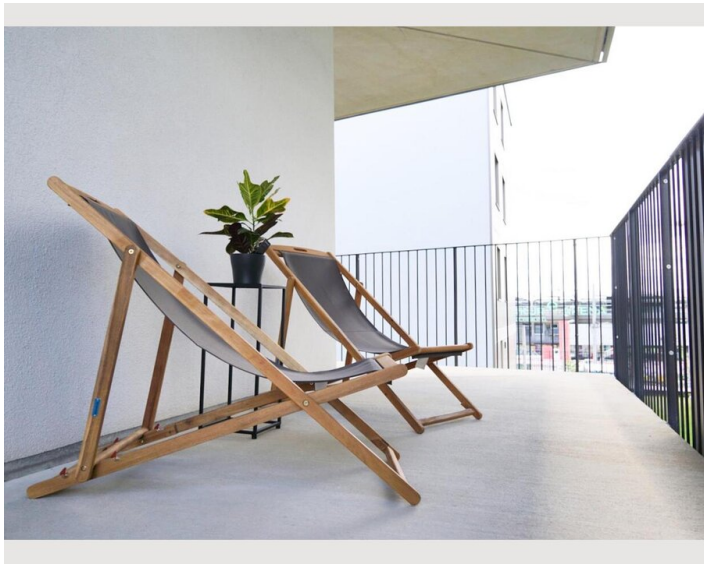
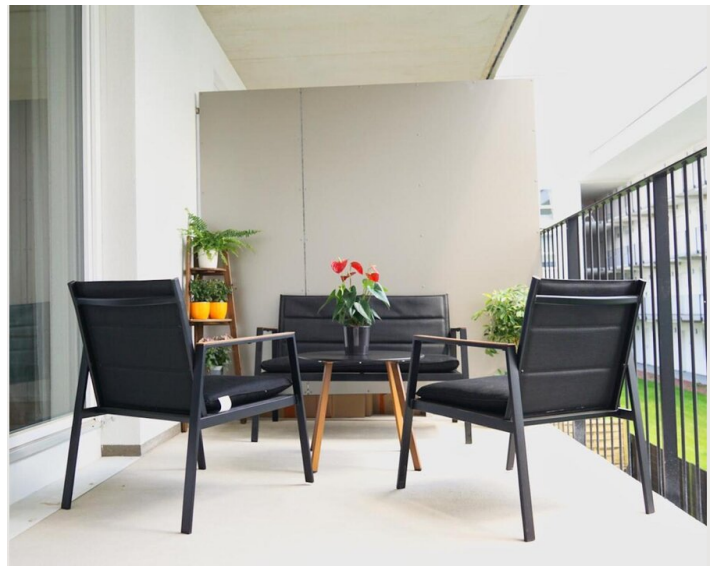
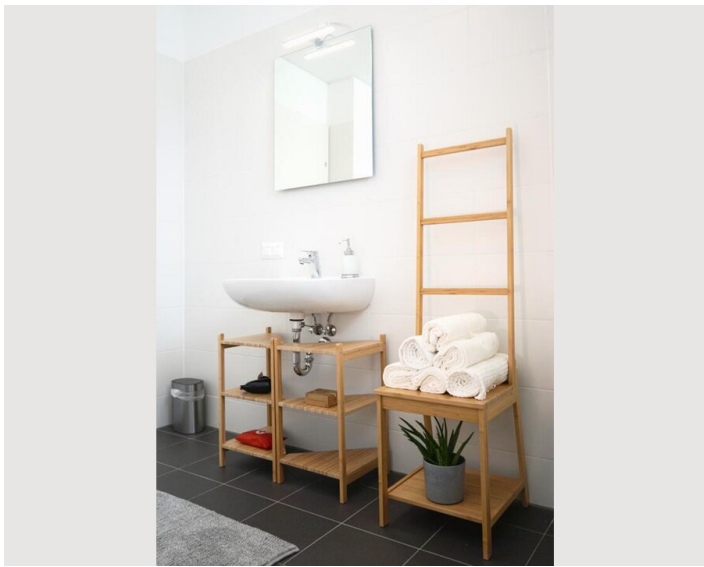
Informations

- Suitable for children
- Desk/Workplace
- Pets on request
- Regular cleaning free of charge
- Short-term parking zone subject to a charge
- Private entrance
- Pets allowed
- Bicycle room free of charge

Picture gallery







Video

Goto Video



Infrastructure



The Graz train station east is only 1 tram stop away



The center is only a few minutes away by tram



Directly in front of the building is a tram station

There is a tram station right in front of the building. The "Messe Graz"(Convention Center Graz) is only a few tram stops away. It only takes a few minutes to get to the apartment from Graz Airport. The district is characterized by its central location and its culturally mixed environment, with many different restaurants, cafes and shops. The 'Murpark', which is considered by many to be the most beautiful shopping center in town, is only a few minutes away. Nearby you will also find the Libenau stadium aka the 'Merkur Arena'. Furthermore, the technical university of Graz is only a few minutes away by bike.

You can also get to the university of Graz and the state hospital Graz(LKH Graz) relatively quickly by bike or by public transport.

Location

