

2 ROOM APARTMENT, 1050 VIENNA

Modern apartment in Vienna close to the main railway station and Karlsplatz

Object number: WIZG2

[View and rent online](#)

Period	09/12/2025 - 09/01/2026
Number of persons	2
Total incl. VAT.	€ 1.657,29
Security deposit	€ 1.300,00



Living space

57m²



Maximum occupancy

3 Persons



Complete accommodation [?]

1 Private bathroom 1 Separated bedroom



Ground floor

Elevator available

Sleeping options

Sleeping room



2x Double bed (1,80 m x 2 m)



1x Sofa bed (2 persons)

Descripton of accommodation

Very sunny and modern 2-room appartment in central location.

Public means of transport

Right under the street in front of the house is a tramway station called Laurenzgasse. There you have access to the tram line 1, 16 and the Badner Bahn

which all take you to Karlsplatz (there you have access to U1,U2 and U4) within 5 minutes.

Within 3-4 minutes walking distance you find the tramway station Kliebergasse where you have access to tram line 18 which takes you to the main railway station within 2 minutes.

Facilities

The appartment is in a quite new building and therefor the appartment (including the windows) is soundproof.

It is located on the third floor (with elevator) with an orientation to the south.

You can expect a Bedroom with a double bed, a bathroom, a toilet, a store room (with a washing machine, a clothes horse, an iron, an ironing board and a vacuum cleaner) and a huge and sunny living room with kitchen and a big comofortable couch.

All rooms are accessable separately through the main corridor.

The appartment is equipped with everything right down to the last detail. You can use all my utensils for cooking of course. Furthermore i provide towels and bed covers to you.

Vicinity and infrastructure

In the very close vicinity you can find many different supermarkets (Hofer, Billa, Spar, Denn's Biomarket), a pharmacy and a relaxing park.

The trams in front of the house take you to the Karlsplatz within 5 minutes where also the famous shopping promenade Kärntnerstraße starts and which ends at the Stephansdom.

How to get to the appartment

Main railway station: Take the tram line 18 to Burggasse-Stadthalle and exit after 2 stations at Kliebergasse. There you have to walk for another 3-4 minutes until you are right in front of my appartment.

Western railway station: Take the tram line 18 to Schlachthausgasse and exit after approximately 12 minutes at Kliebergasse. 3-4 minutes walk to my appartment from there.

I would love to be your host and hope i can make your time in Vienna to be a beautiful and relaxing one.

Equipment & Features

Basic equipment

- Private toilet
- TV
- Towels
- Hairdryer
- Washing machine
- Internet/Wifi
- Bedclothes

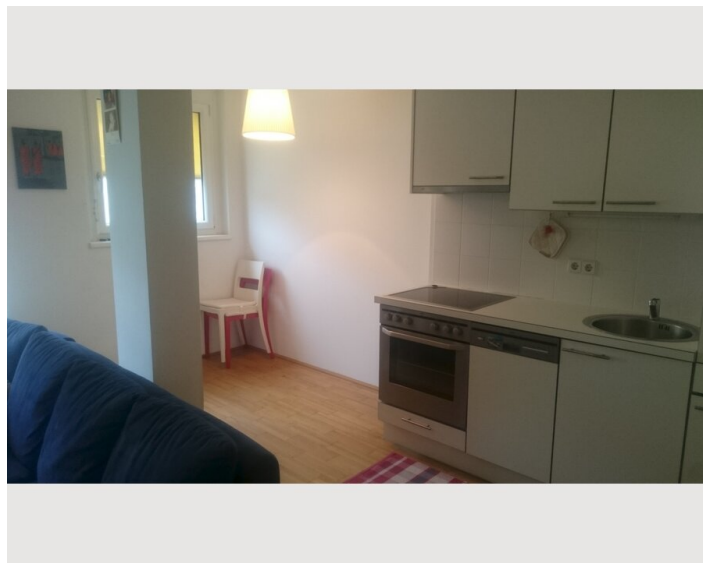
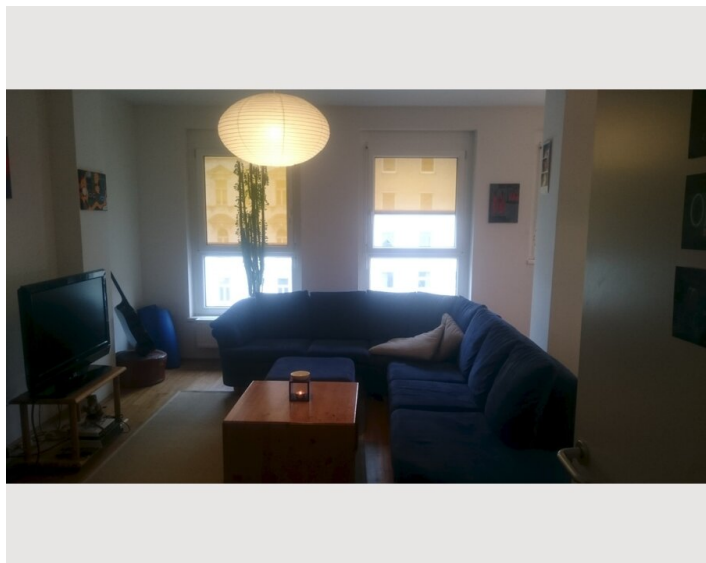
Kitchen

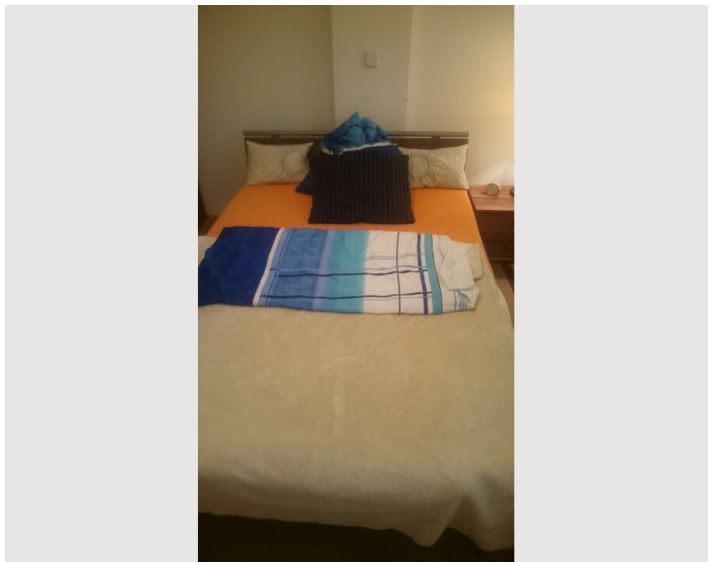
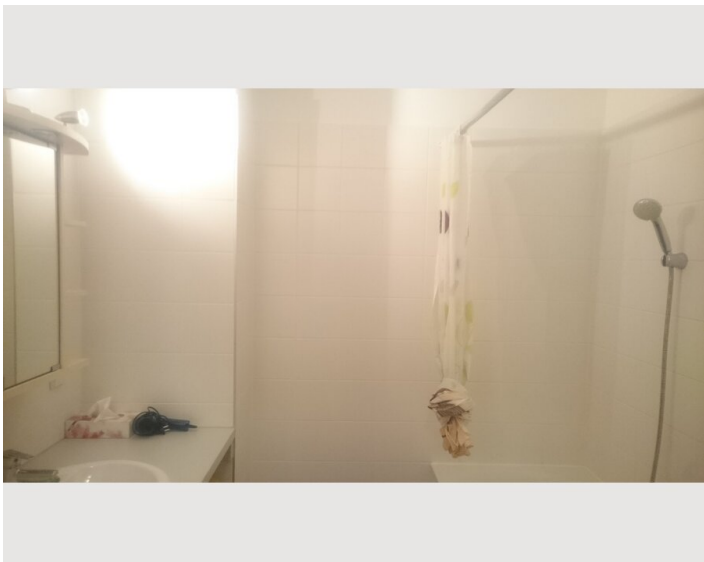
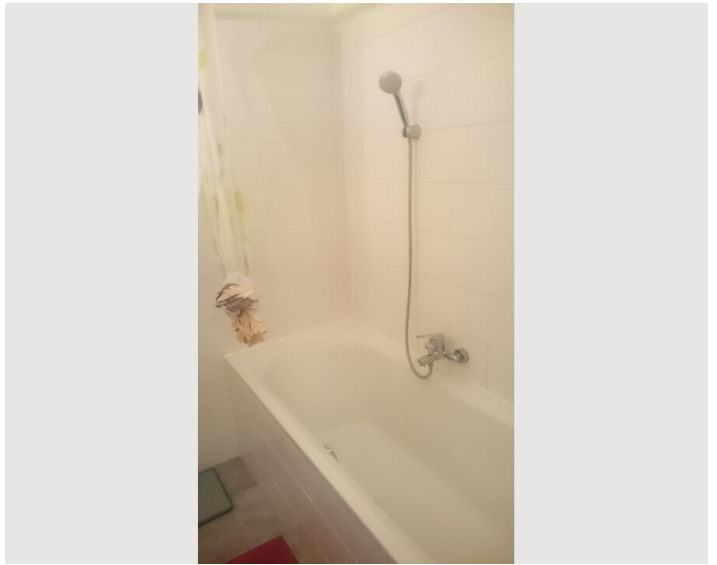
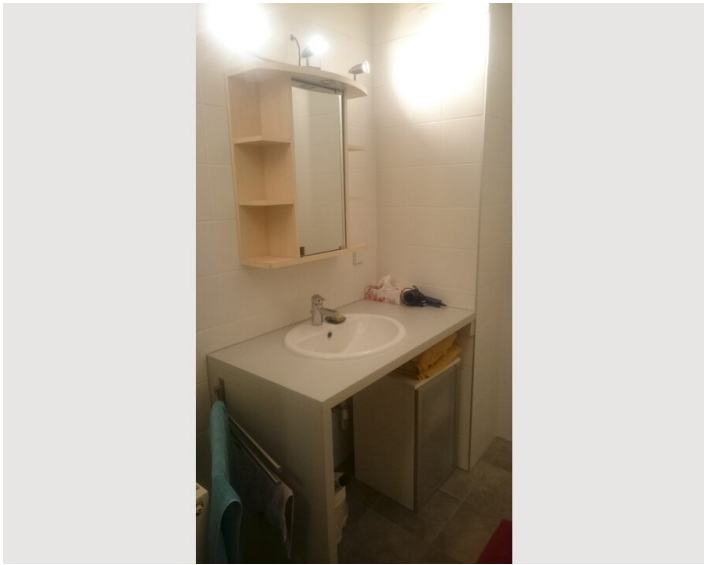
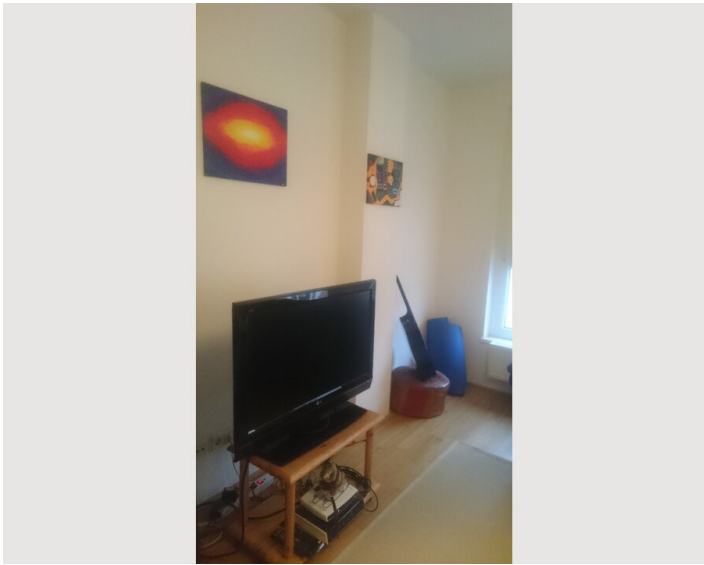
- Private kitchen
- Microwave
- Glasses/Tableware
- Dishwasher
- Coffee machine

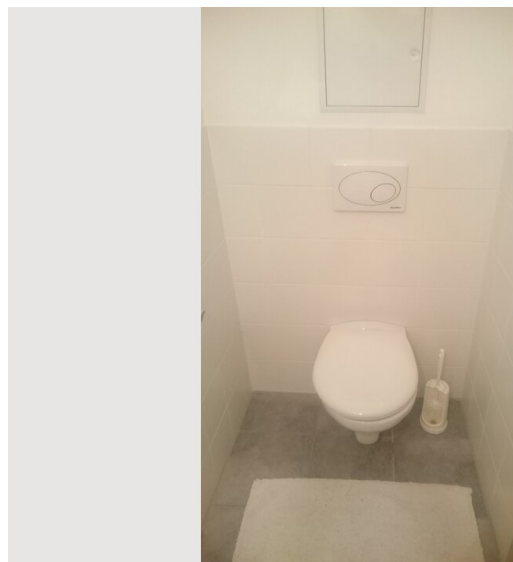
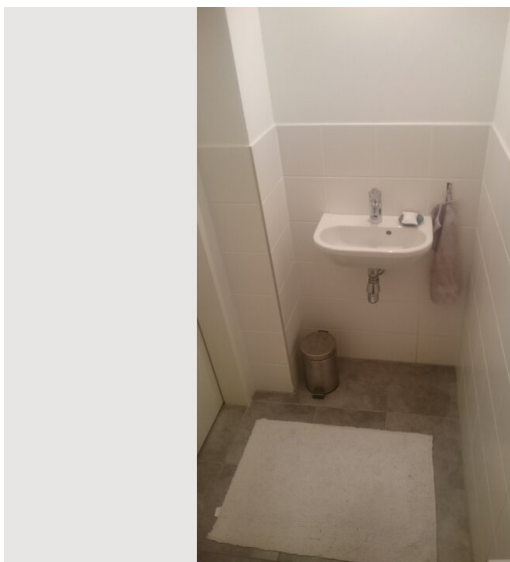
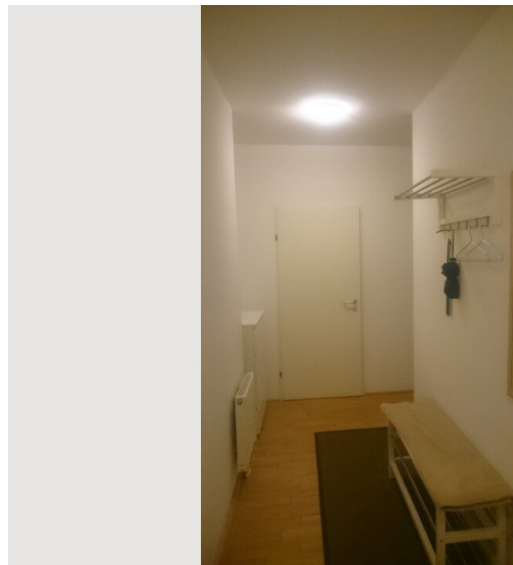
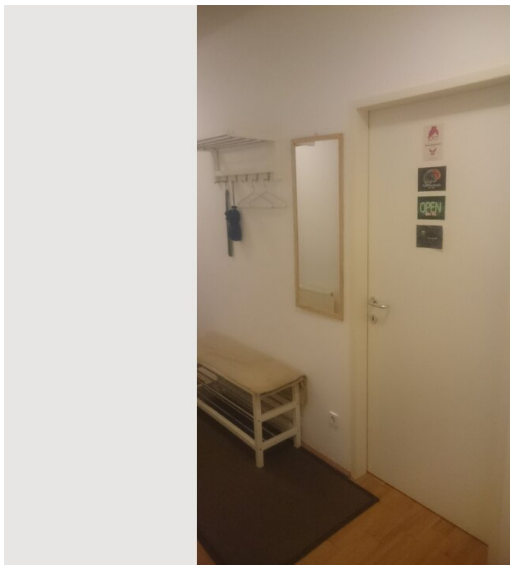
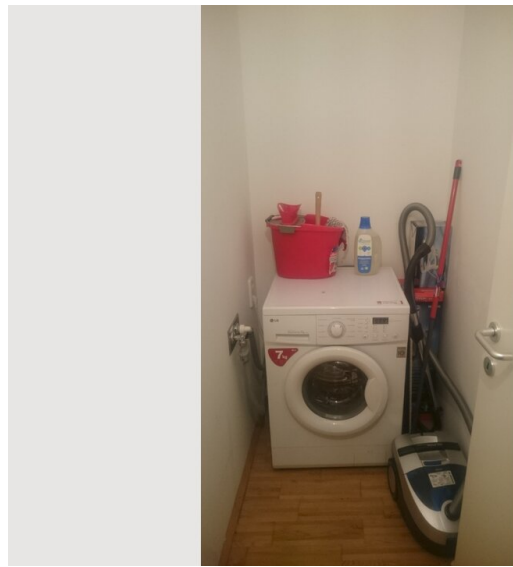
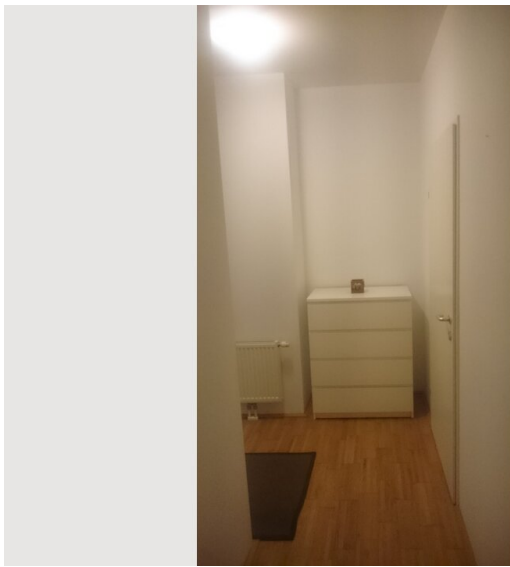
Informations

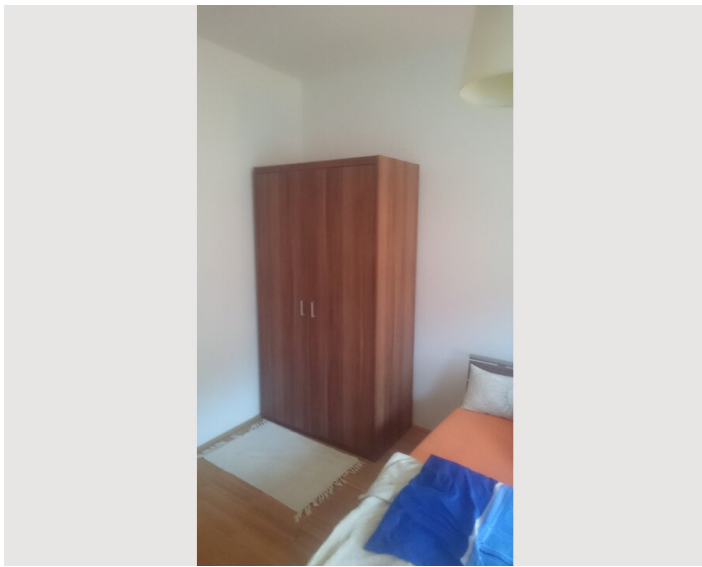
- Pets forbidden
- Short-term parking zone subject to a charge

Picture gallery









Location

