



2 ROOM APARTMENT, 4020 LINZ

## Apartment fully equipped

Object number: CONJ4

[View and rent online](#)

<b>Period</b>	21/12/2025 - 21/01/2026
<b>Number of persons</b>	2
<b>Total</b> incl. VAT.	€ 3.630,59
Security deposit	€ 2.800,00



### Living space

58m<sup>2</sup>



### Maximum occupancy

2 Persons



### Complete accommodation <sup>?</sup>

1 Private bathroom 1 Separated bedroom



### Ground floor

Elevator available

## Sleeping options

### Sleeping room



1x Double bed (1,80 m x 2 m)



1x Sofa bed (2 persons)

## Description of accommodation

Feel like home in our brand new apartment in Linz! The location couldn't be better, the furnishing hardly any more exclusive - the unique concept turns short term rental into an extraordinary experience.

The furnishing was chosen with the highest standards in mind, starting with unique pieces of furniture crafted by carpenters all the way to high tech equipment that leaves nothing to be desired.

Tenants enjoy every advantage for a pleasant and carefree stay. No matter if you're looking for an exclusive home for business or private reasons, you will feel comfortable all around.

### Equipment & Features



#### Basic equipment

- Balcony
- Private toilet
- Dryer
- Internet/Wifi
- Garage
- Washing machine
- TV
- Parking space



#### Kitchen

- Private kitchen
- Microwave
- Dishwasher
- Coffee machine

### Informations

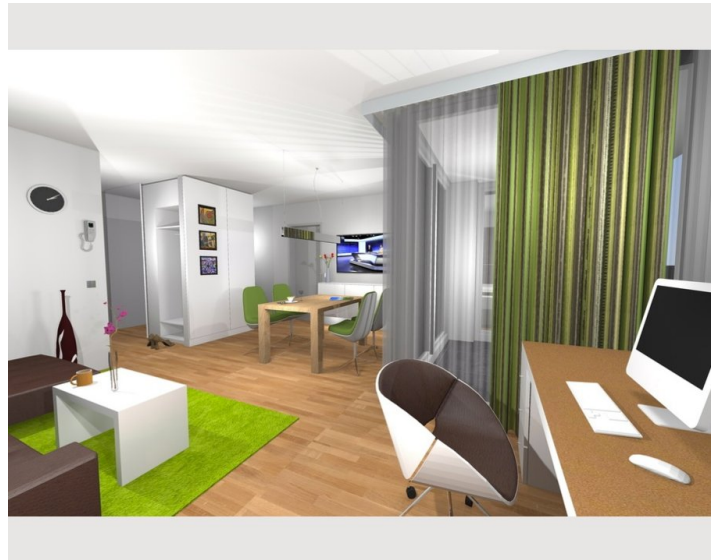
- Smoking not allowed

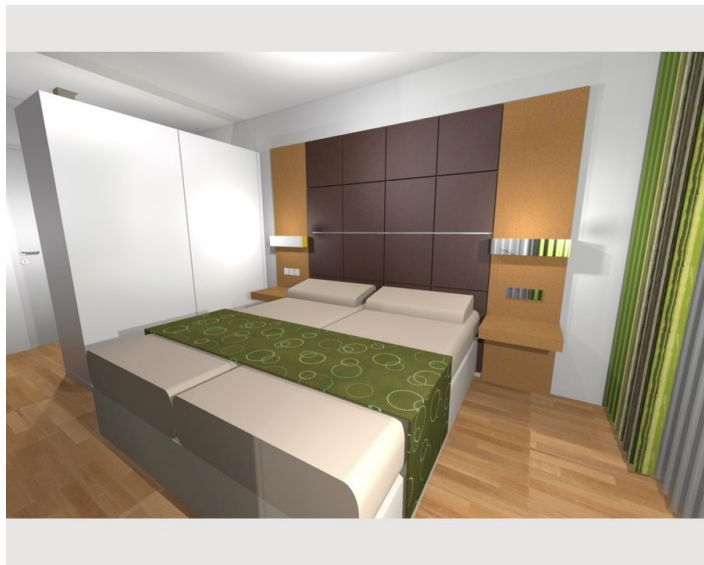
### Additional services

- Garage
- Regular cleaning

All prices are gross per month - billing is done directly with the lessor.

### Picture gallery







The map shows the central area of Linz, Austria. A green circular icon with a white clock face is positioned at the intersection of the Danubio (Danube River) and the main railway station area. Key streets visible include the Danubio, the main railway line, and various side streets like the Linz Hauptbahnhof. Landmarks such as the Musiktheater Linz and the Linz Hauptbahnhof are clearly marked. The map also shows the surrounding urban layout with various residential and commercial areas.