



STUDIO APARTMENT, 1010 VIENNA

Apartment Central Park

Object number: GOLS2

[View and rent online](#)

| | |
|--------------------------|----------------------------|
| Period | 09/12/2025 - 09/01/2026 |
| Number of persons | 2 |
| Total incl. VAT. | € 1.779,69 |
| Security deposit | € 1.400,00 |

This spacious apartment is 100 meters from the Stubentor underground station on the U3 line, in the Wollzeile shopping street in downtown Vienna. Free WiFi is available. The Landstraße-Wien Mitte Train and Underground Station, with direct connections



Living space

45m²



Maximum occupancy

2 Persons



Complete accommodation [?]

1 Private bathroom 1 Living-Sleepingroom



2. floor

Elevator available



Check-in

13:00 - 21:00 Clock



Check-out

13:00 - 21:00 Clock

Sleeping options

Living and sleeping



1x Double bed (1,80 m x 2 m)

Description of accommodation

The apartment has a bedroom facing the quiet inner courtyard, a fully equipped kitchen, a dining area, a living area with a flat-screen cable TV and a separate toilet and bathroom with a bathtub.

Equipment & Features



Basic equipment

- Internet/Wifi
- Private washing machine
- Towels
- Private parking space
- Vacuum cleaner
- Hairdryer
- TV
- Bedclothes
- Private toilet
- Garage
- Iron & ironing board



First supply

- Toilet paper
- Soap



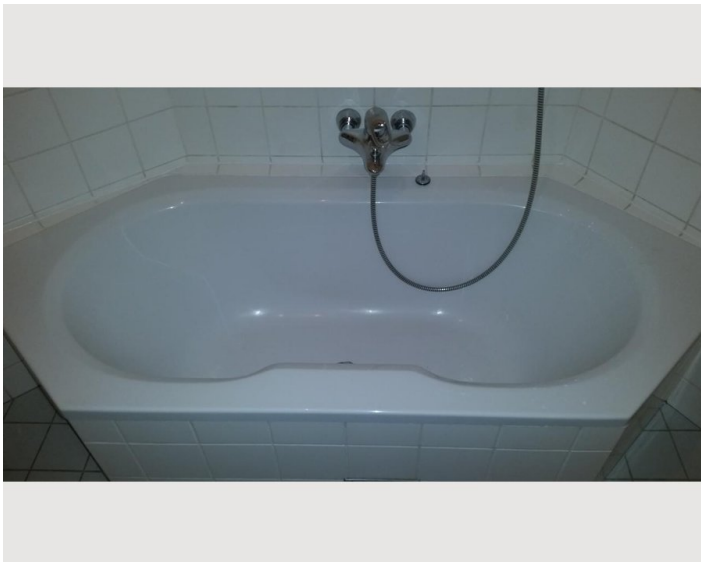
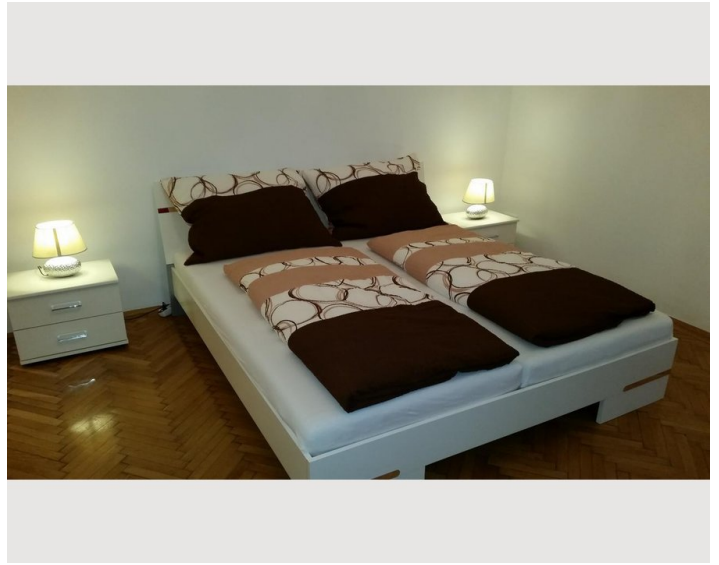
Kitchen

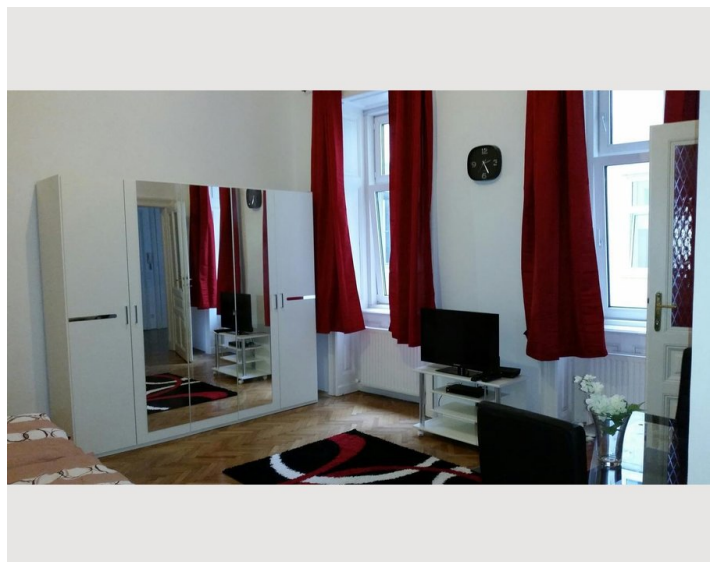
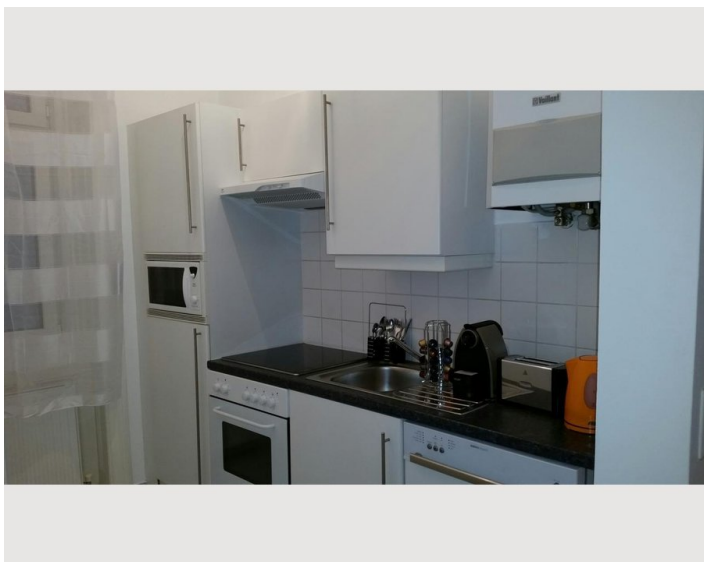
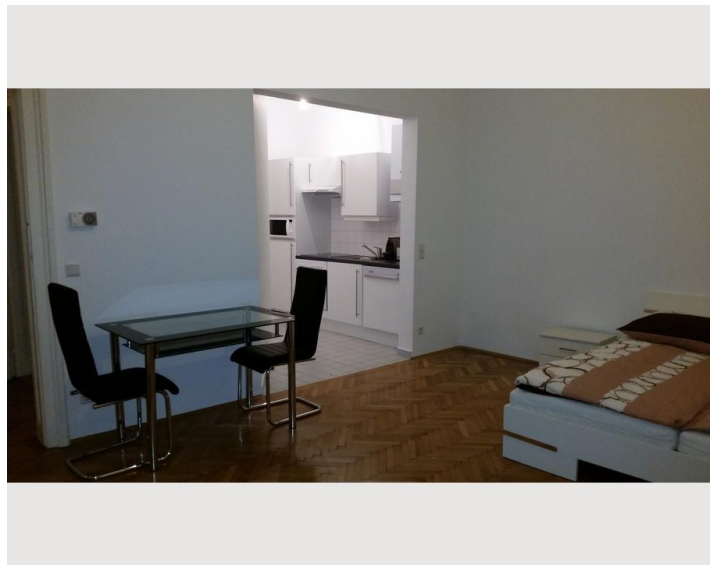
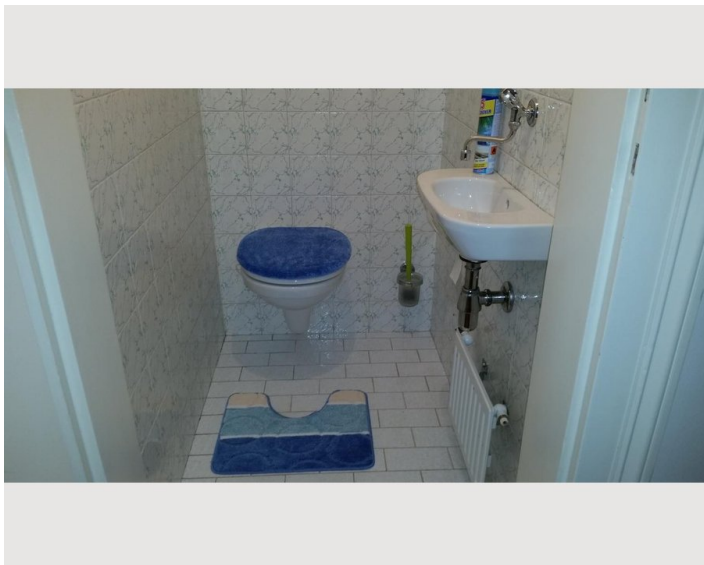
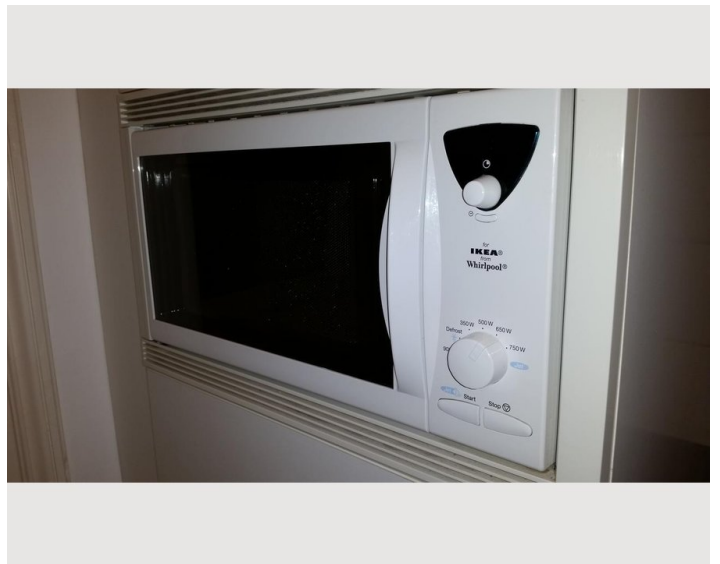
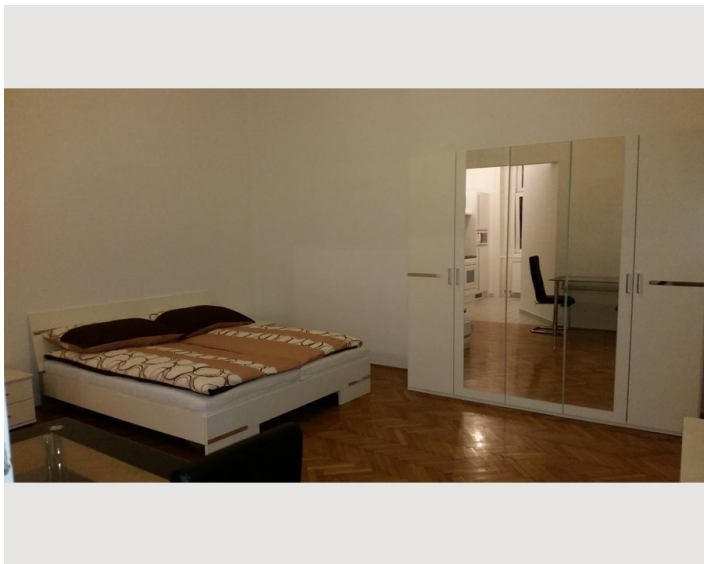
- Private kitchen
- Glasses/Tableware
- Dishwasher
- Cooking utensils
- Coffee machine
- Microwave

Informations

- Suitable for construction workers
- Smoking not allowed
- Private entrance
- Regular cleaning at extra cost
- Not suitable for children
- Short-term parking zone subject to a charge
- Pets on request

Picture gallery





Infrastructure



This accommodation is located in the heart of Vienna, which is accessible from numerous shops, restaurants, cafes, bars as well as the well-known city park, sights, CAT City Train from the airport directly to the apartment in a few minutes on foot, underground and tram station

Location

