

2 ZIMMER WOHNUNG, 6020 INNSBRUCK

## 2.5 room flat centrally located above the roofs of Innsbruck

Object number: GLÄH2

[View and rent online](#)

<b>Period</b>	30/05/ - 30/06/2025
<b>Number of persons</b>	2
<b>Total incl. VAT.</b>	€ 1.920,64
<b>Security deposit</b>	€ 1.400,00

Welcome to the flat "Above the rooftops of Innsbruck" - a cosy place in a quiet location and yet only 10 minutes walk from the centre. Spacious 2 room flat with all amenities.



### Living space

60m<sup>2</sup>



### Maximum occupancy

2 Persons



### Complete accommodation <sup>?</sup>

1 private bathroom 1 Separated bedroom 1 Living-Sleepingroom



### Ground floor



### Check-in

09:00 - 20:00 Clock



### Check-out

09:00 - 20:00 Clock

## Sleeping options

### Sleeping room



1x Double bed (1,60 m x 2 m)

### Living and sleeping



1x Sofa bed (1 person)

## Descripton of accommodation

Welcome to our cosy 60 m2 flat (ground floor) with a breathtaking view.

From the living room you have a view of the old town, the Patscherkofel and southwards to the Stubaital. From the kitchen you have a beautiful panorama with the Serles in the foreground.

All this in a quiet, undisturbed environment and at the same time only a 10-minute walk from the centre (Goldenes Dachl). A private, lockable cellar compartment for bicycles and other items is available directly in the house.

From the anteroom you enter the spacious and light-flooded living room, as well as the kitchen and the separate toilet. Through the separate study, which really invites you to work - thanks to the great view - you reach the bedroom. Here you will find a double bed (160 cm x 200 cm), a chest of drawers and a spacious wardrobe. The bedroom, study and living room can be pleasantly darkened with pleated blinds. The living room offers everything you need to relax after a busy day: TV, wifi, pull-out sofa.

The kitchen has everything you need in terms of appliances and cooking utensils: Dishwasher, induction cooker with oven, hand blender, tea bags, sugar and salt for first use are also there for you.

Of course, there are enough bed linen, blankets, hand towels and tea towels, as well as toilet paper, soap, shower gel and hair shampoo on arrival.

From the kitchen you enter the compact bathroom, which also houses the private washing machine.

### Equipment features



#### Basic equipment

- Internet/Wifi
- Private washing machine
- Towels
- Vacuum cleaner
- Cleaning utensils
- TV
- Bedclothes
- Private toilet
- Iron & ironing board
- Hairdryer



#### First supply

- Toilet paper
- Soap
- shampoo



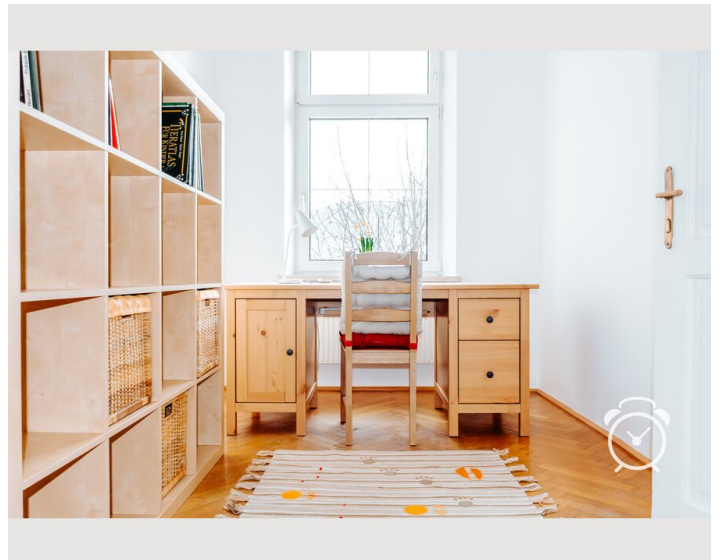
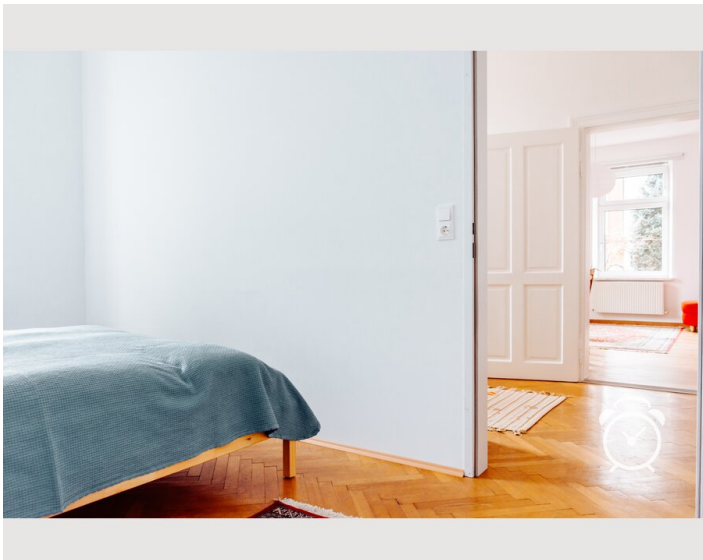
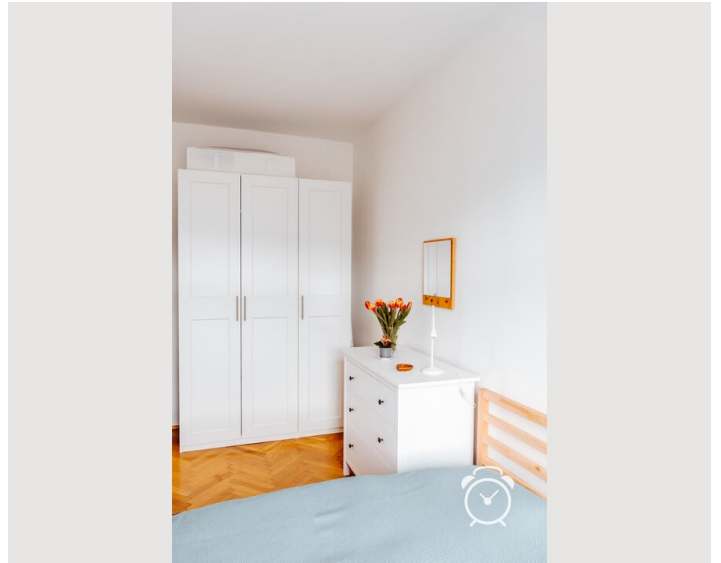
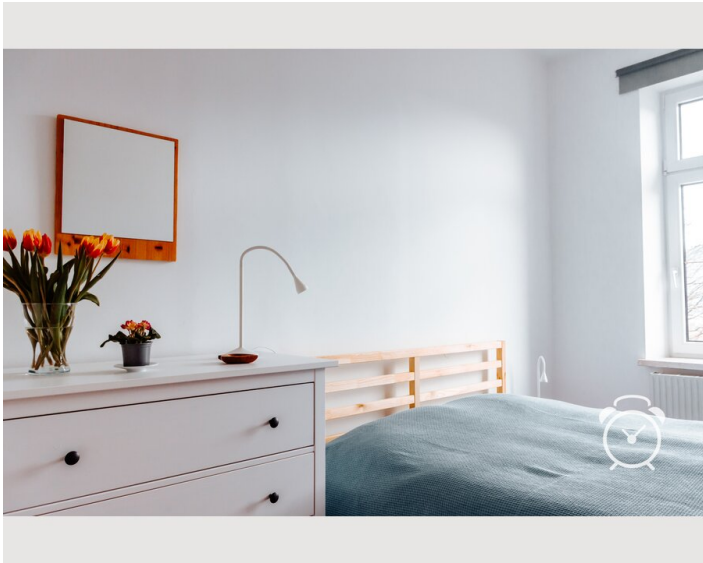
#### Kitchen

- Private kitchen
- Glasses/Tableware
- Cooking utensils
- Dishwasher

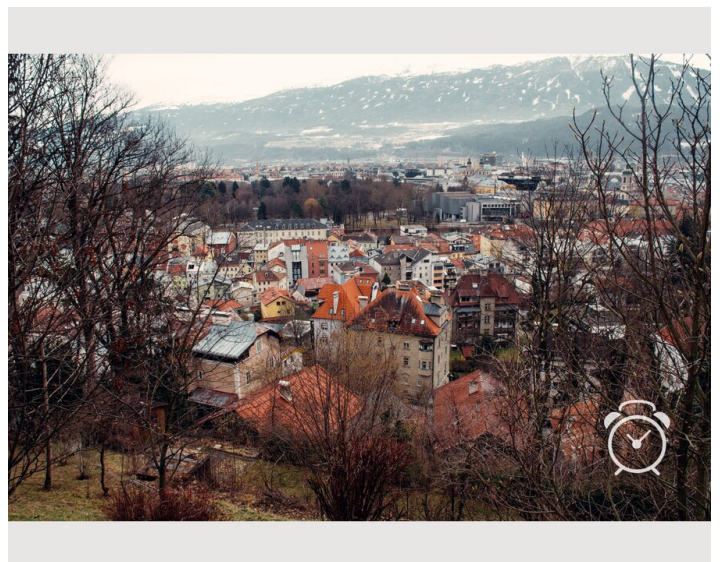
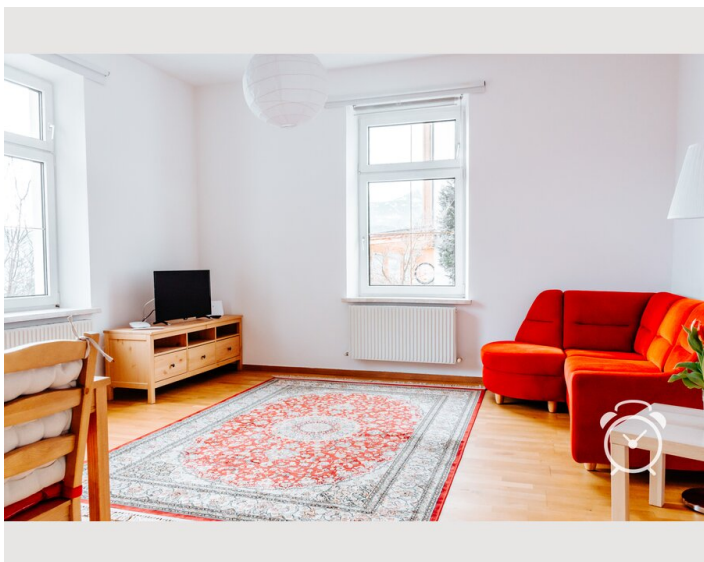
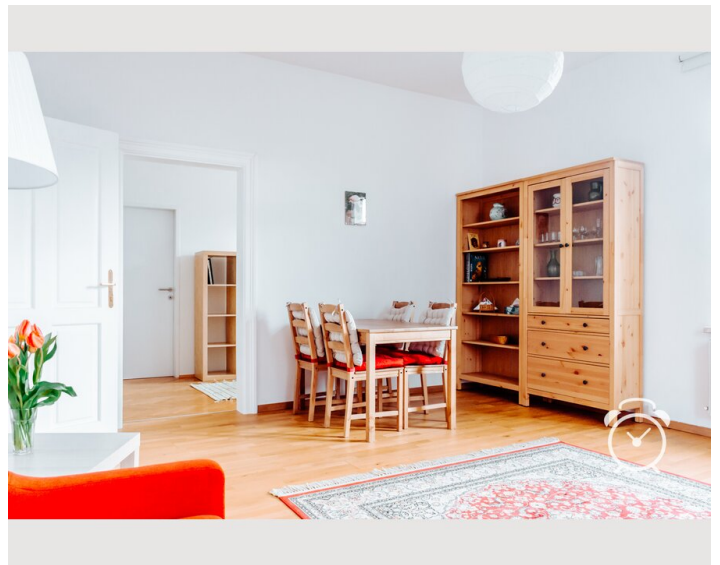
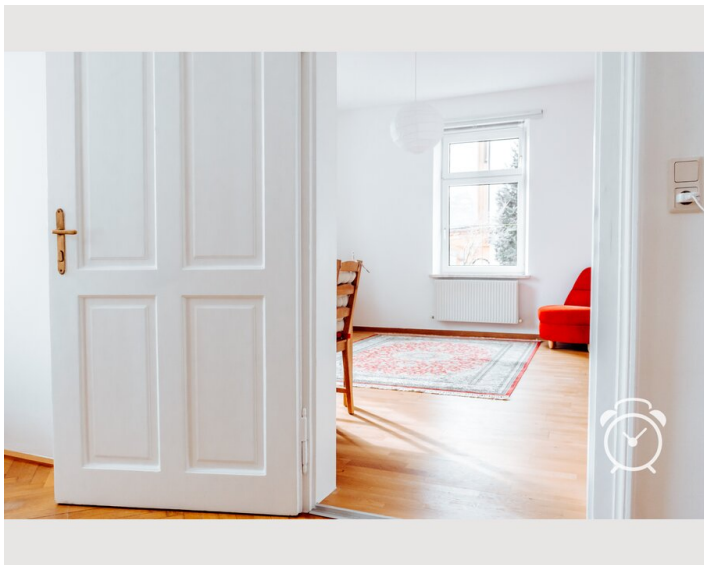
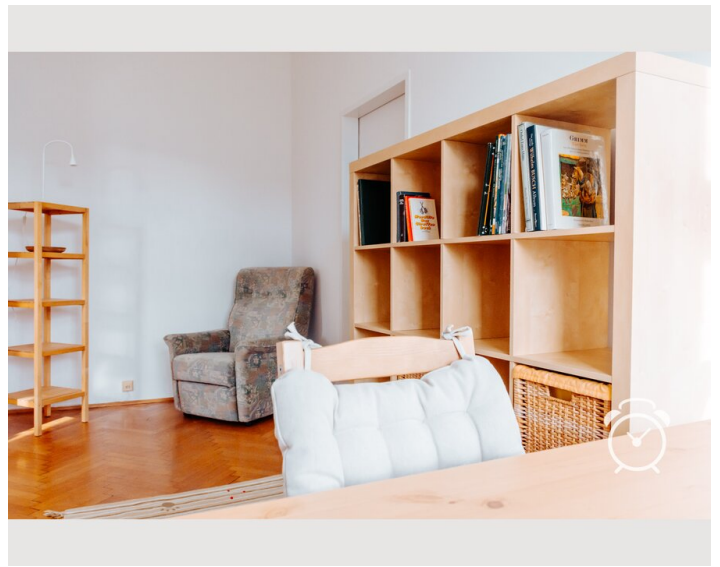
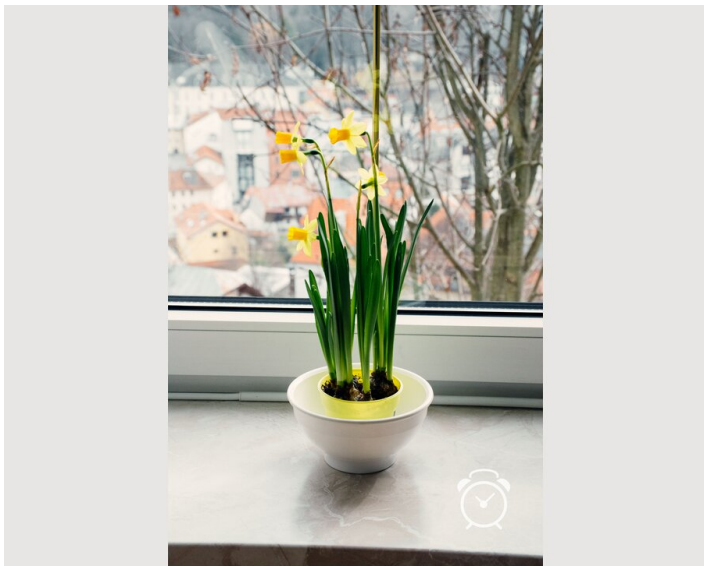
## Informations

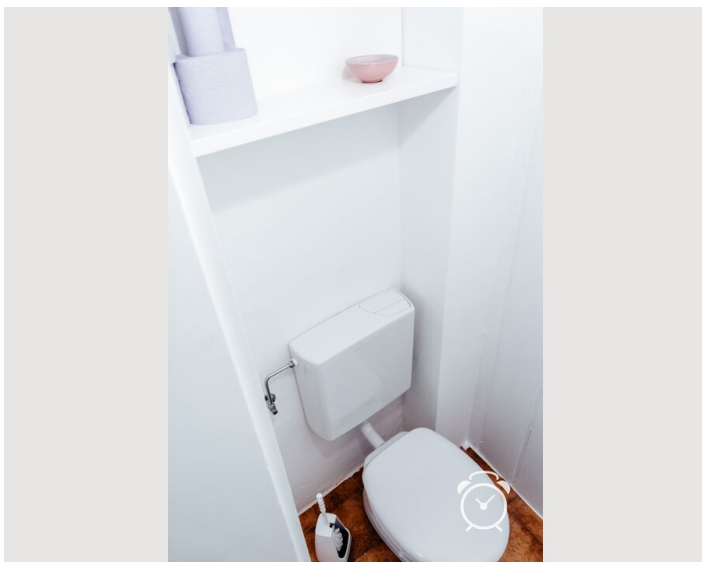
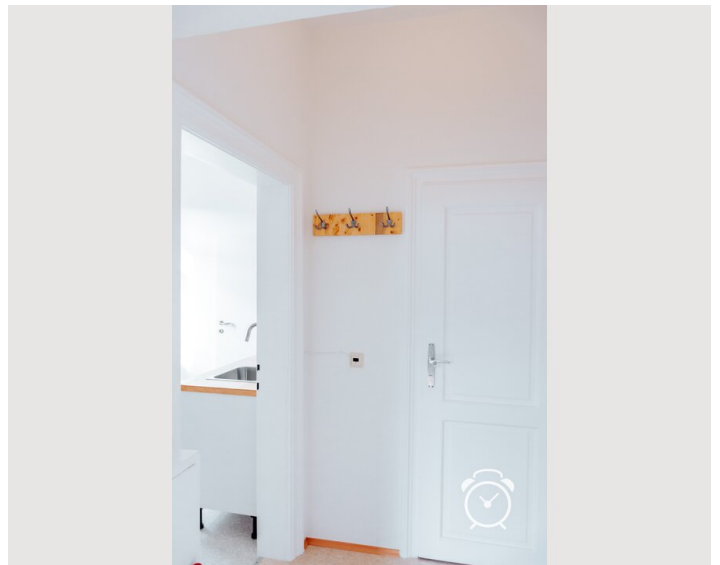
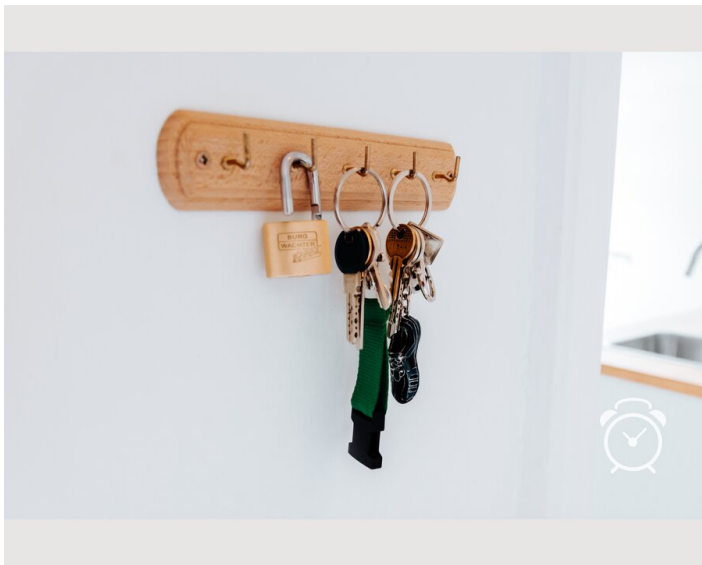
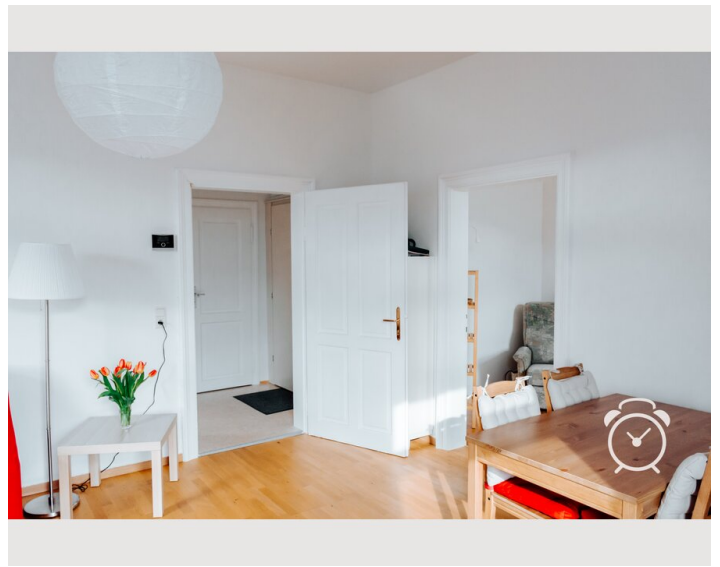
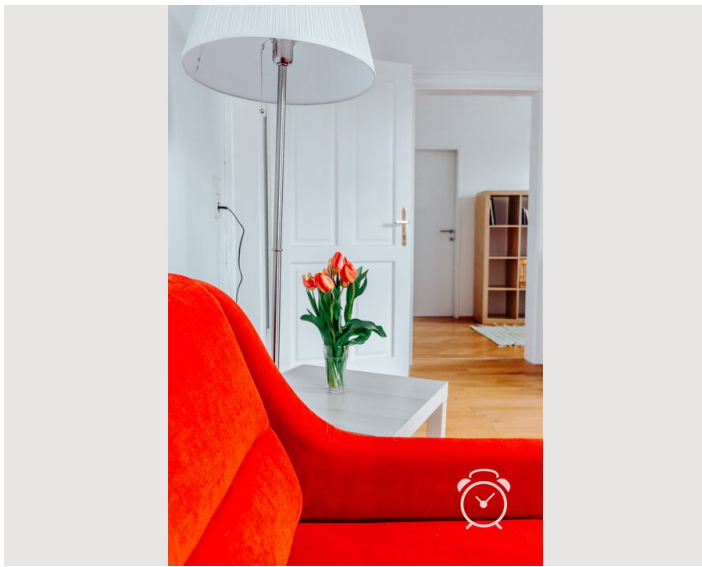
- Smoking not allowed
- Private entrance
- Regular cleaning at extra cost
- Desk/Workplace
- Pets on request
- Bicycle room free of charge

## Picture gallery

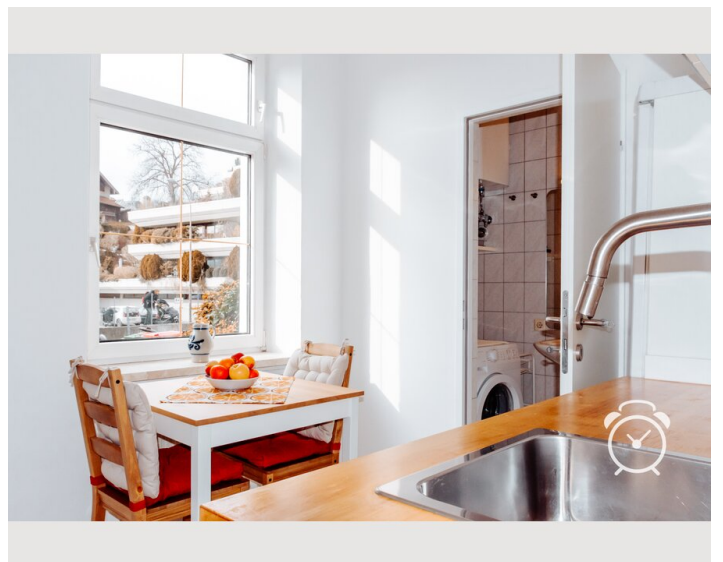
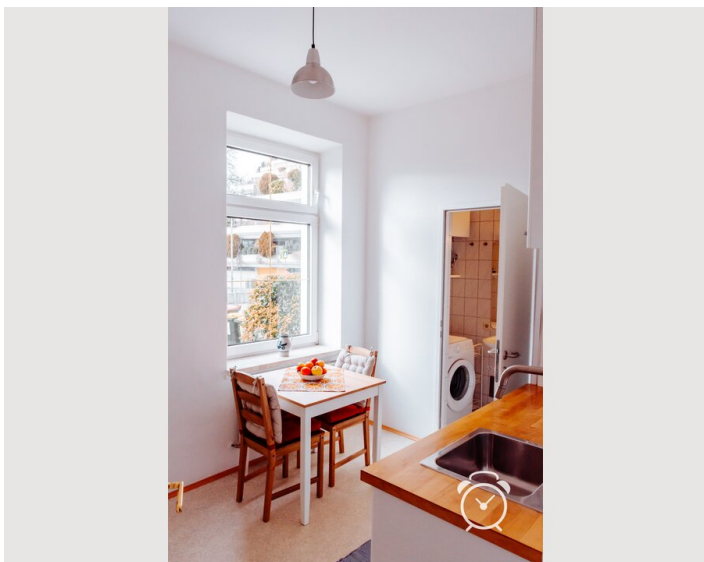
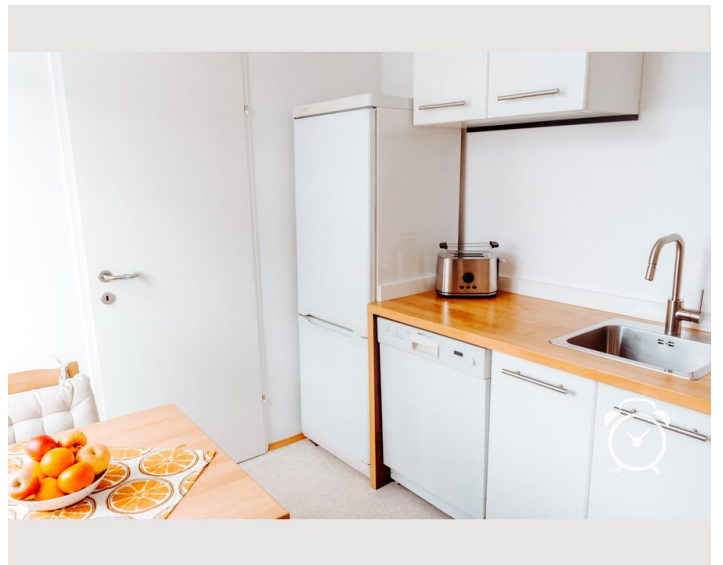
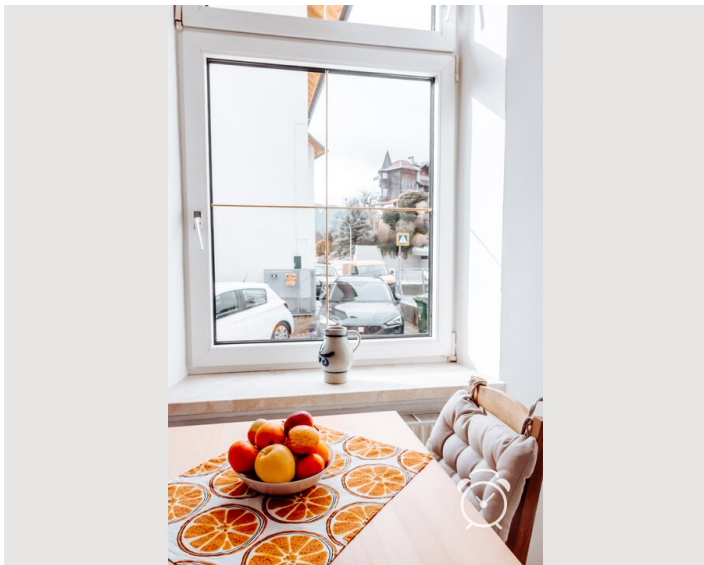
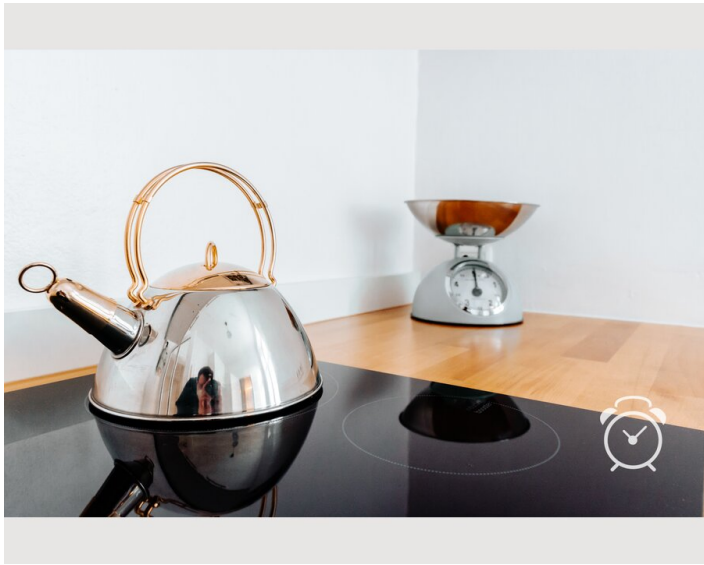




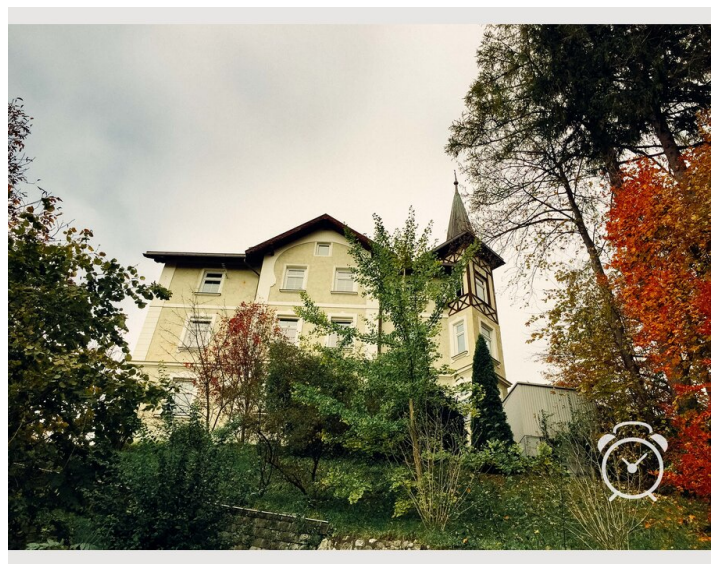
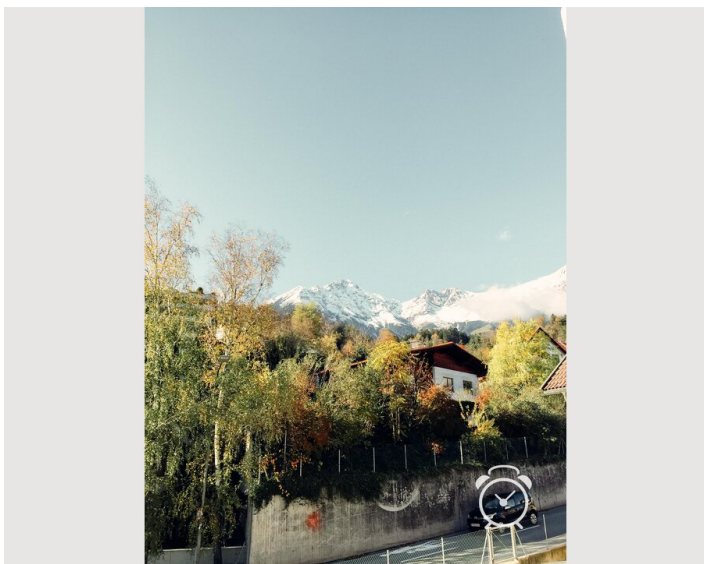
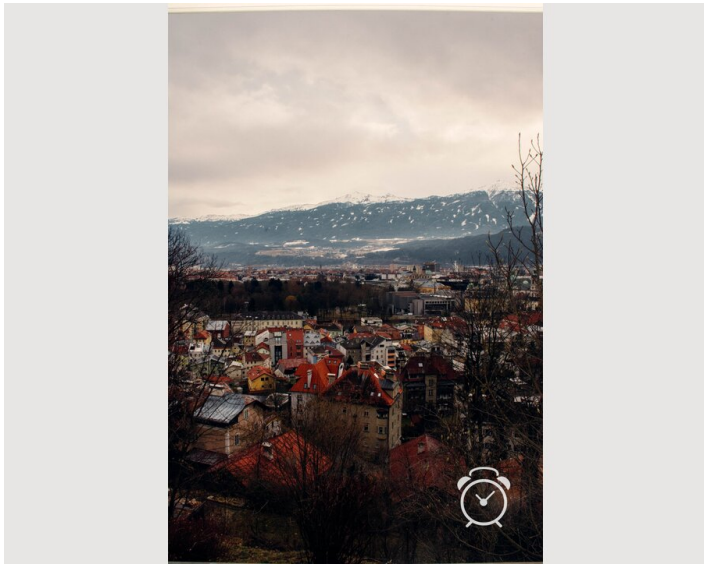
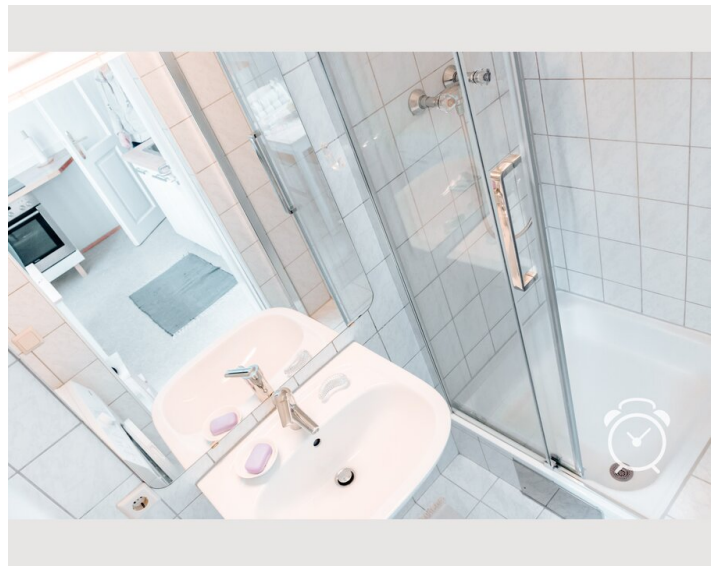
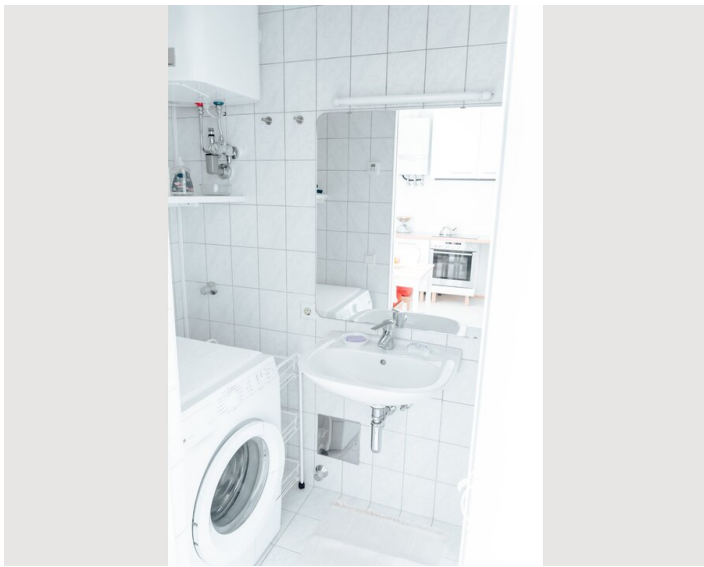














## Infrastructure

🕒 10 minutes on foot, or 3 stops with the line J

🚌 Line J directly in front of the house

🏠 3-4 minutes on foot, or alternatively 1 stop with line J

🚠 with line J in max. 15 minutes

Supermarket, bakery, pastry shop, gastronomy, tobacco store, pharmacy and doctor within 4-5 minutes walking distance. Bus stop (line J) directly in front of the house. This will take you to the center, the Sillpark shopping center, the train station and then on to the Patscherkofelbahn. All this without changing trains. If, on the other hand, you are driving out of town from home, you will soon reach the Hungerburg: a wonderful starting point for hikes and all kinds of sports activities or, for those who love high altitudes, you can take the cable car from there to the Nordkette.

## Location

