



2 ZIMMER WOHNUNG, 1020 VIENNA

## Die fromme Hermine

Object number: NOVG25

[View and rent online](#)

<b>Period</b>	24/07/ - 24/08/2025
<b>Number of persons</b>	2
<b>Total</b> incl. VAT.	€ 3.922,86
Security deposit	€ 2.900,00

This apartment can comfortably accommodate 2 people with the spacious double bed.



### Living space

57m<sup>2</sup>



### Maximum occupancy

5 Persons



### Complete accommodation <sup>?</sup>

1 private bathroom 1 Separated bedroom 1 Living-Sleepingroom



### 3. floor



### Check-in

14:00 - 22:00 Clock



### Check-out

00:00 - 11:00 Clock

## Sleeping options

### Sleeping room



1x Double bed (1,80 m x 2 m)



1x Single bed

### Living and sleeping



1x Sofa bed (2 persons)

## Descripton of accommodation

The comfort of a hotel room - the privacy of an apartment. The apartment stands out due to its unique charm. Here you will find the comfort and the cleanliness of a hotel room, while enjoying the freedom and privacy of your own home away from home. This apartment can comfortably accommodate 2 people with the spacious double bed. The bright and spacious fully equipped kitchen enables guests to prepare a quick breakfast or a cozy candle-lit dinner. The bathroom with a bathtub offers a nice opportunity to relax after a long day in the city. Wifi is available and provided free of charge throughout the apartment. Airport shuttle can be arranged upon request.

## Equipment & Features



### Basic equipment

- Internet/Wifi
- Private washing machine
- Towels
- Parking space
- Iron & ironing board
- Hairdryer
- TV
- Bedclothes
- Private toilet
- Vacuum cleaner
- Cleaning utensils



### First supply

- Toilet paper
- Soap
- shampoo
- Nespresso capsules



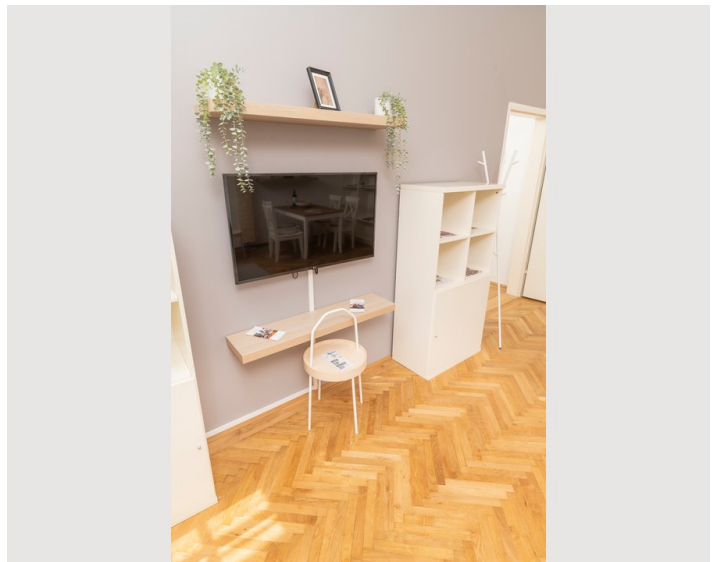
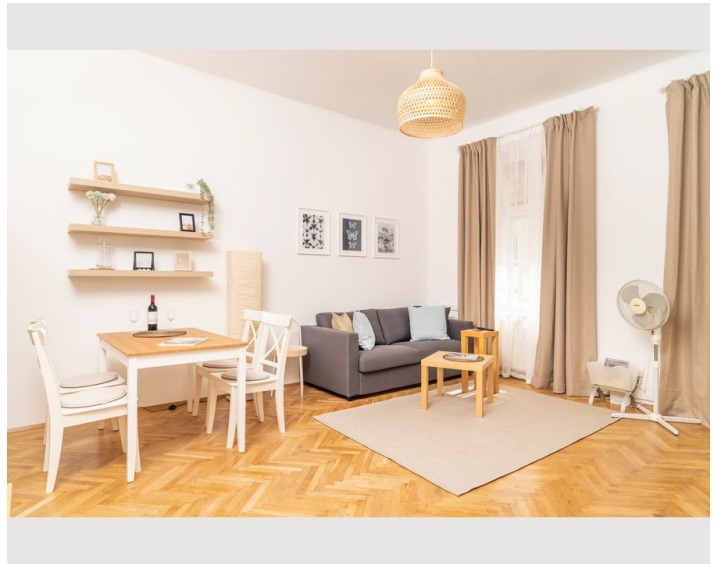
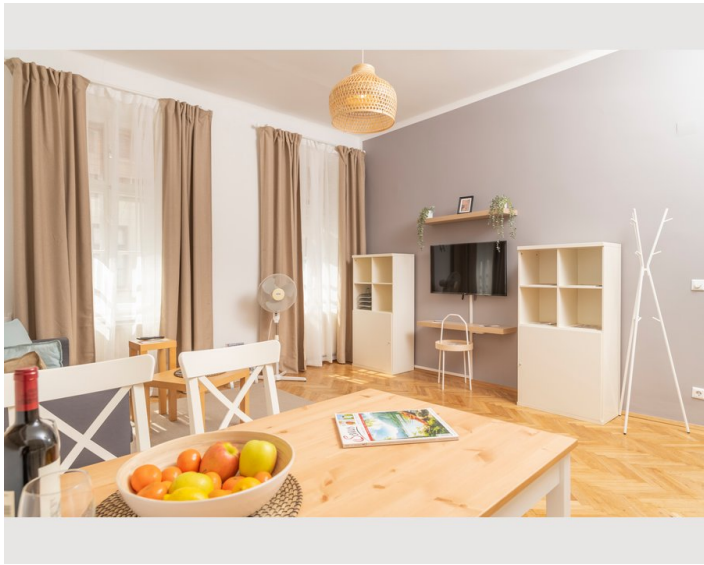
### Kitchen

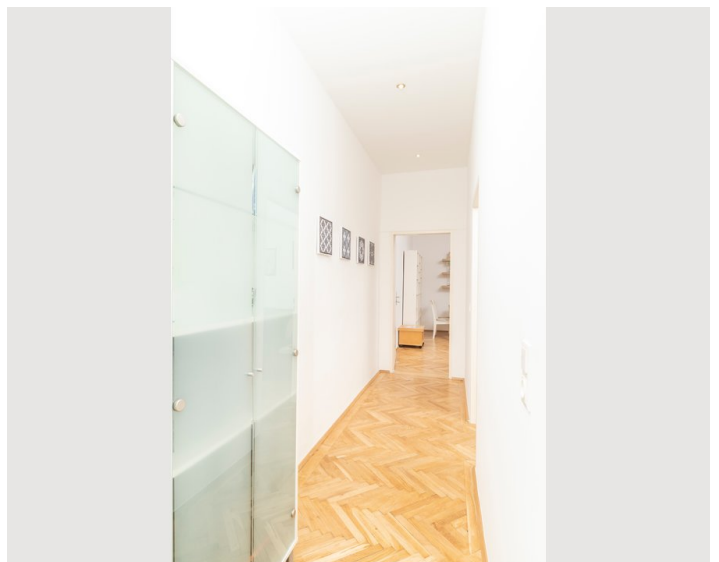
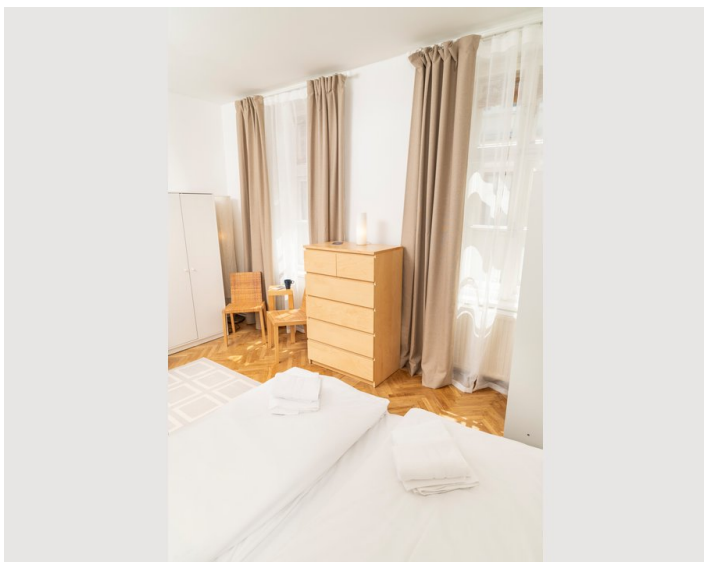
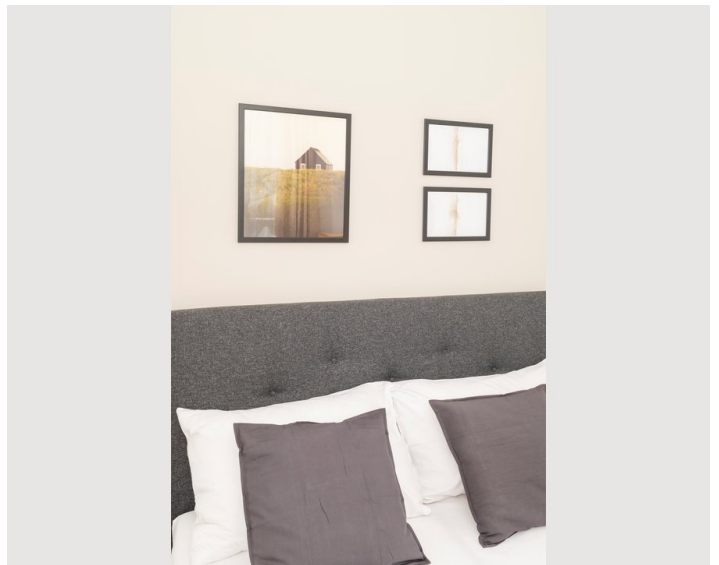
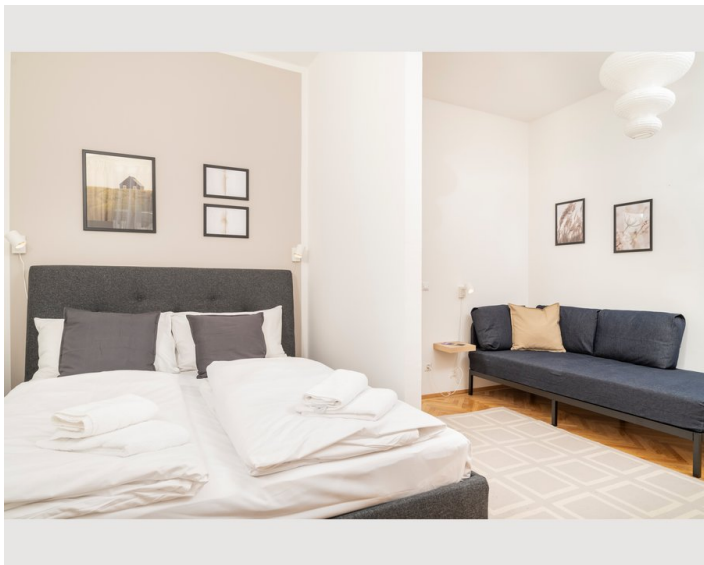
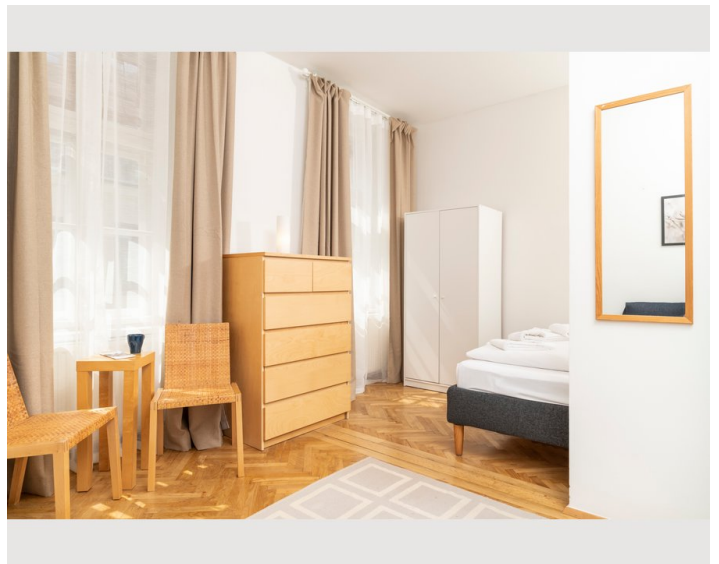
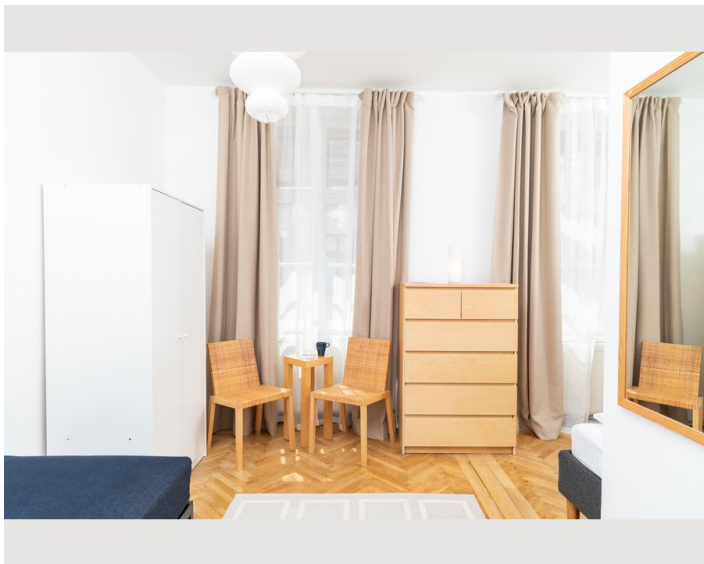
- Private kitchen
- Glasses/Tableware
- Dishwasher
- Cooking utensils
- Espresso machine
- Microwave

## Informations

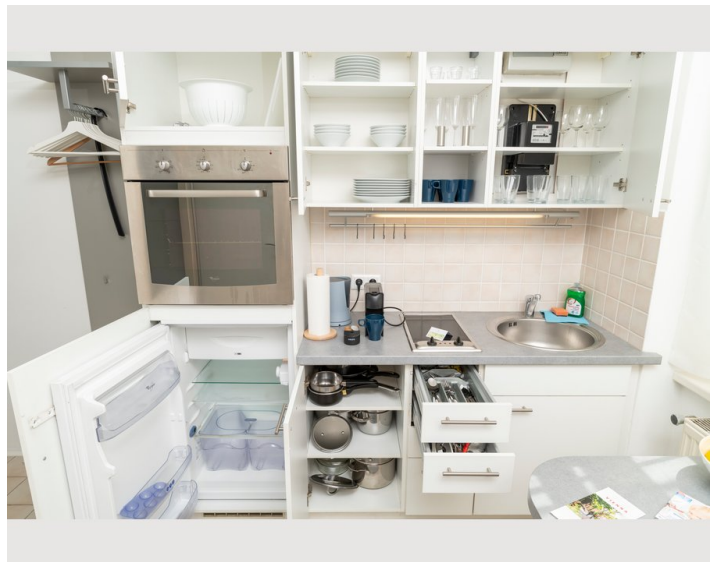
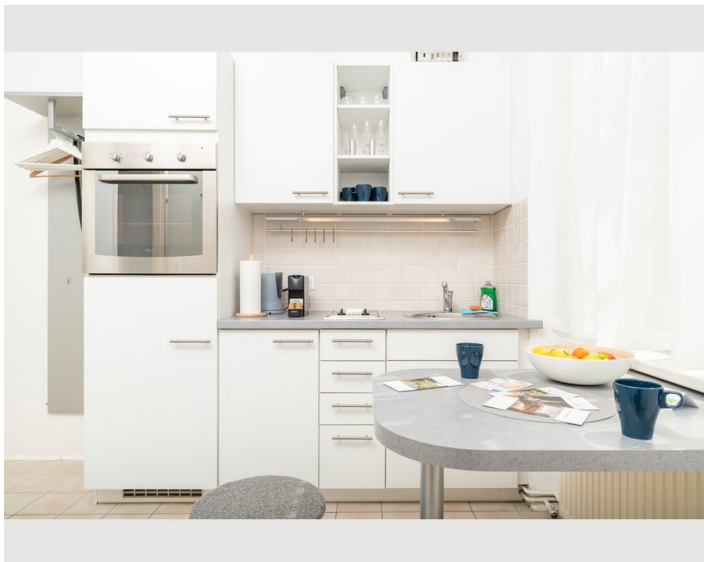
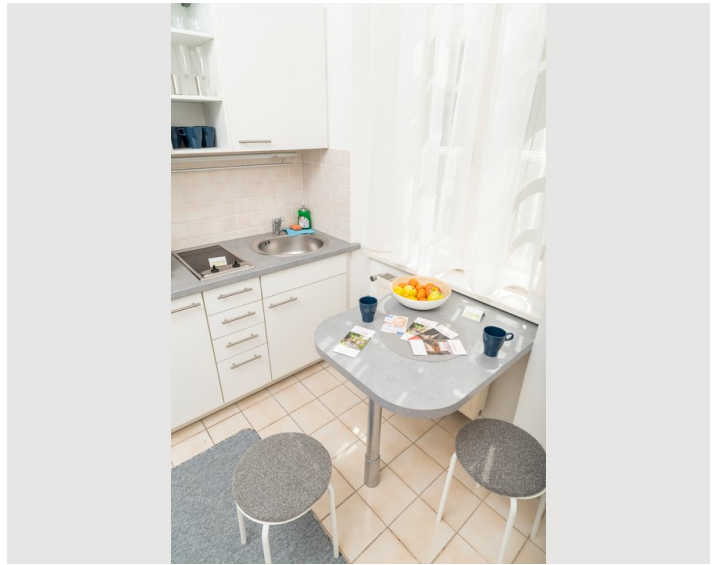
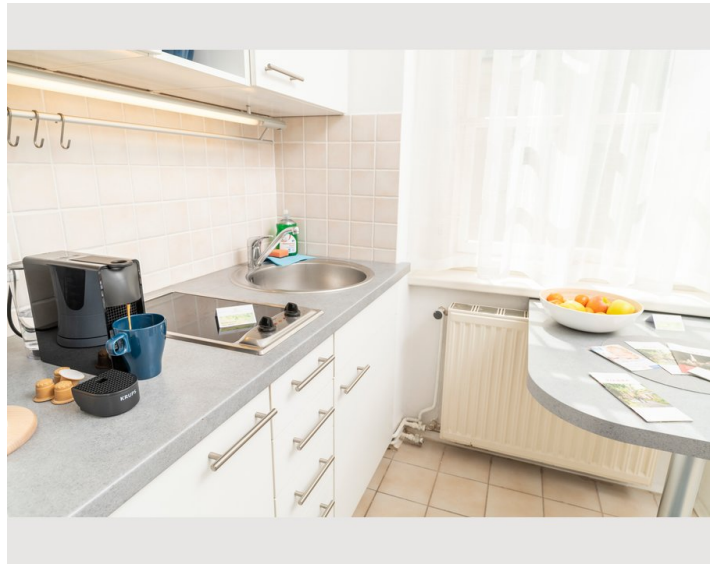
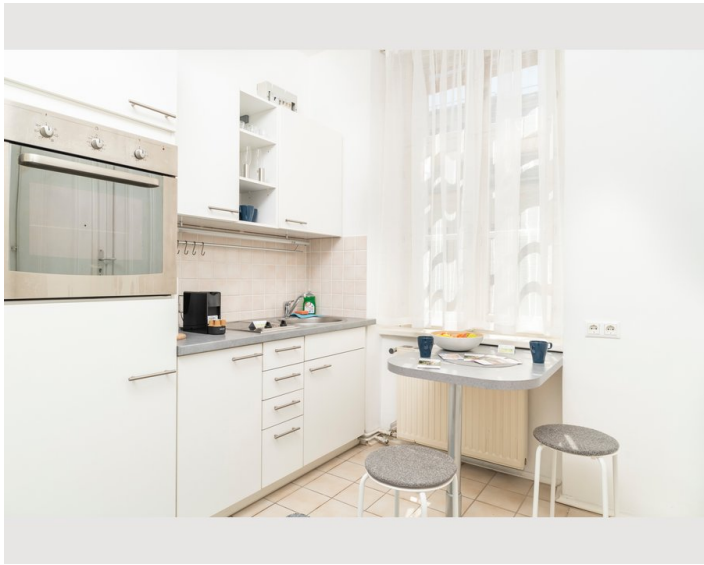
- Suitable for children
- Desk/Workplace
- Regular cleaning free of charge
- Smoking not allowed
- Pets on request

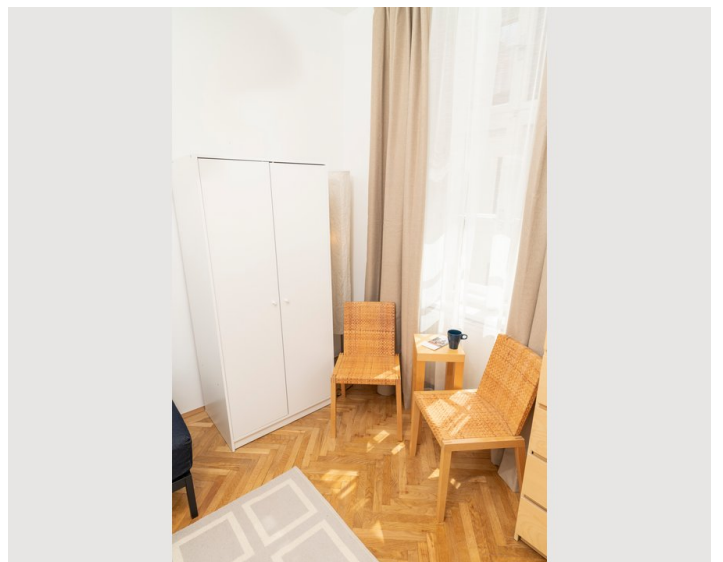
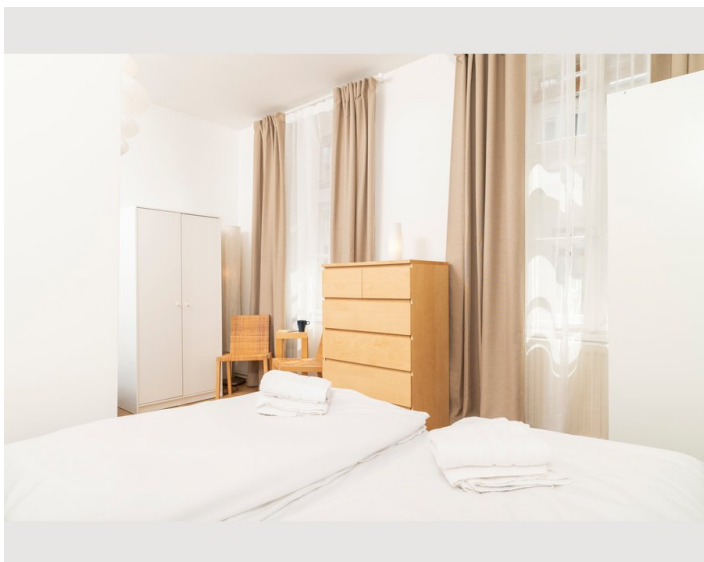
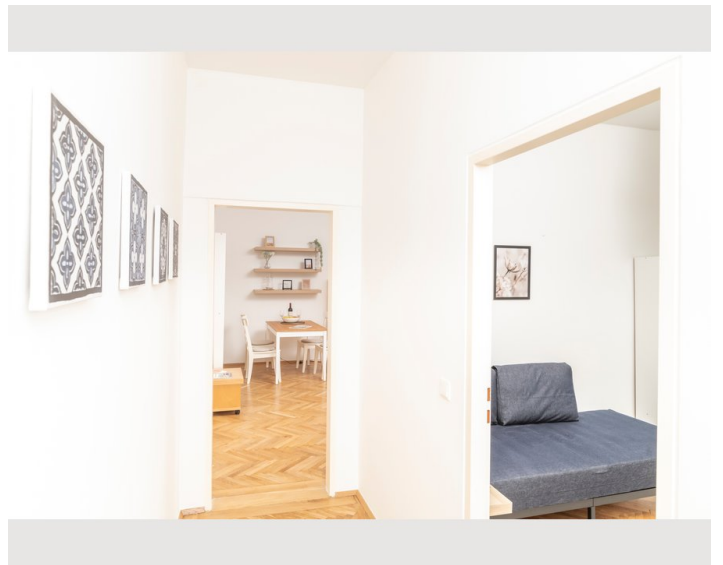
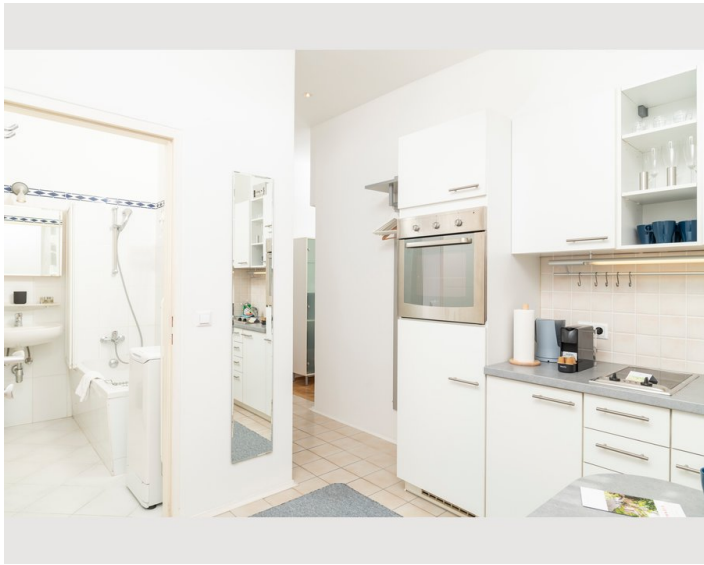
## Picture gallery

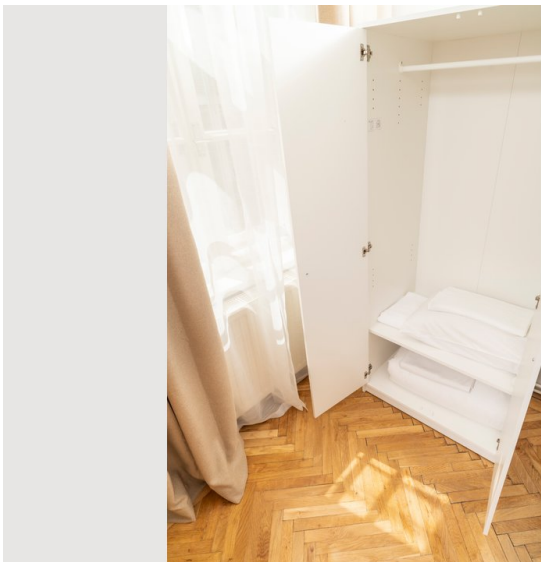
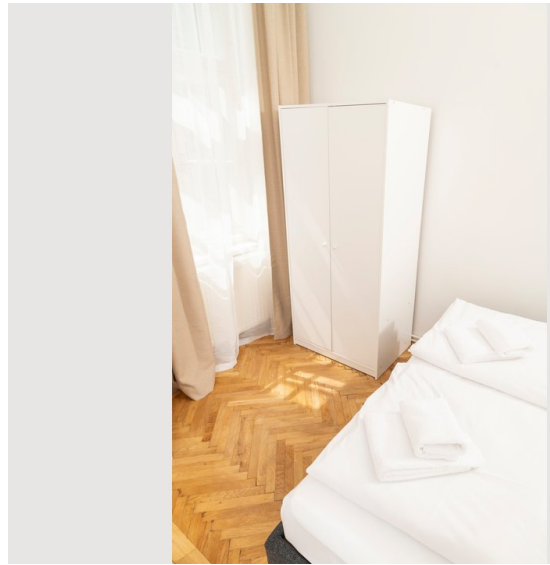
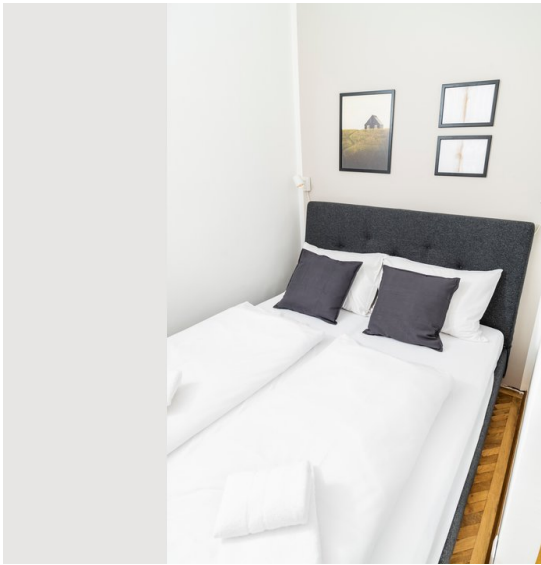
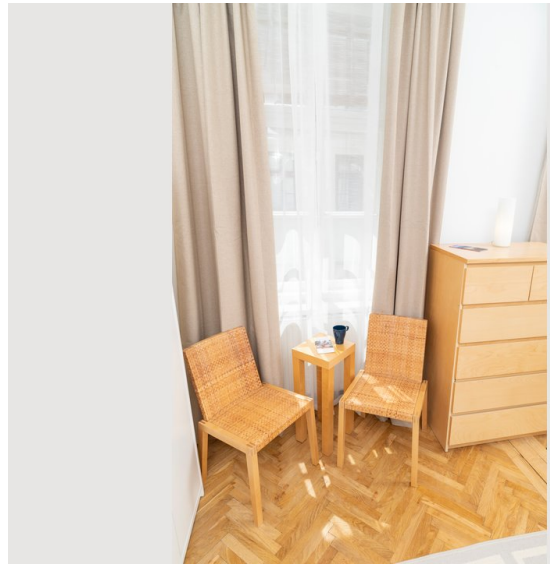














- 
- 
- 
- 
- 
- 
- 
- 
- 
- 
- 
- 
- 
- 
- 
- 
- 
- 
- 
- 

- 
- 
- 
- 
- 
- 
- 
- 
- 
- 
- 
- 
- 
- 
- 
- 
- 
- 
- 
-

## Infrastructure



Spar 500 meter walking distance

The second district, Leopoldstadt, is a heavily populated yet green urban area bordering the city centre to the Northeast. With an area of almost 20 square kilometres, it is the biggest of the inner districts, spanning nearly 10 kilometres along the Danube river towards the Southeast. The district is part of an artificial island between the Danube River and Danube Canal (Donaukanal), containing large expanses of parks and forests. You reach in 20 minutes on foot the "Donauinsel", where you can swim or enjoy a sunset walk. Or you can go the opposite direction until "Donaukanal", where you will find a variety of beach bars and restaurant. The wilder forests of the Prater in the South transition into the more formal park and amusement park near the transportation hub Praterstern. The area along the Danube Canal across from the Schwedenplatz is the lively Karmeliter Quarter (Karmeliterviertel), once a Jewish ghetto, today it is the hub of Jewish life in Vienna – don't miss the Karmeliter market or Karmeliter Church. Further North, bordering the 20th district, you will find the lovely Augarten park. In summer, you can enjoy an open-air cinema under the stars here (Kino Wie Noch Nie). With its proximity to the city centre, this district is the perfect starting point to explore the Vienna city centre whilst experiencing the culture and greenery of one of the city's liveliest districts.

The apartment is located in Konradgasse, a quiet yet central street within the Leopoldstadt district, directly at Danube Canal. It is only a 15-minute walk to Praterstern, which you reach by crossing over a nice park. The apartment is strategically located between three metro stations, Schottenring, Roßauer Lände and Taborstraße, connecting you to the metro lines U1 and U2. From Praterstern, you will also connect to the tram lines 5 and 9. You can reach both the green Prater area and Augarten park in less than 10 minutes on foot. You will find numerous supermarkets, bakeries and pharmacies nearby.

Our guests will find a range of restaurants, cafes and bars all around the apartment. For a fancy dinner or brunch experience, cross the Danube Canal and board the Motto am Fluss – a restaurant on a boat right on the Danube Canal. For traditional Austrian dishes, head on over to the famous Schweizerhaus near the Prater amusement park – a large beer garden, well-known for its excellent Stelze (knuckle of pork). For those that prefer Italian, we highly recommend the nearby Eatalico on Praterstraße. A perfect sunset is best experienced with a glass of wine from the Loft Bar & Lounge on the uppermost floor of the Sofitel Hotel on the Danube Canal.

Location

