



2 ZIMMER WOHNUNG, 1020 VIENNA

Hideaway am Tabor

Object number: NOVO26

[View and rent online](#)

Period	16/07/ - 16/08/2025
Number of persons	2
Total incl. VAT.	€ 2.755,81
Security deposit	€ 2.000,00

This 40m2 apartment can comfortably accommodate up to 4 people with the spacious double bed and an elegant pull-out sofa bed.



Living space

41m²



Maximum occupancy

4 Persons



Complete accommodation [?]

1 private bathroom 1 Separated bedroom 1 Living-Sleepingroom



3. floor



Check-in

14:00 - 22:00 Clock



Check-out

00:00 - 11:00 Clock

Sleeping options

Sleeping room



1x Double bed (1,80 m x 2 m)

Living and sleeping



1x Sofa bed (2 persons)

Descripton of accommodation

The comfort of a hotel room - the privacy of an apartment. The apartment stands out due to its unique charm. Here you will find the comfort and the cleanliness of a hotel room, while enjoying the freedom and privacy of your own home away from home. This 40m2 apartment can comfortably accommodate up to 4 people with the spacious double bed and an elegant pull-out sofa bed. The bright and spacious fully equipped kitchen enables guests to prepare a quick breakfast or a cozy candle-lit dinner. Wi-Fi is available and provided free of charge throughout the apartment. Airport shuttle can be arranged upon request.

Equipment & Features



Basic equipment

- Internet/Wifi
- Private washing machine
- Towels
- Vacuum cleaner
- Cleaning utensils
- TV
- Bedclothes
- Private toilet
- Iron & ironing board
- Hairdryer



First supply

- Toilet paper
- Soap
- shampoo
- Nespresso capsules



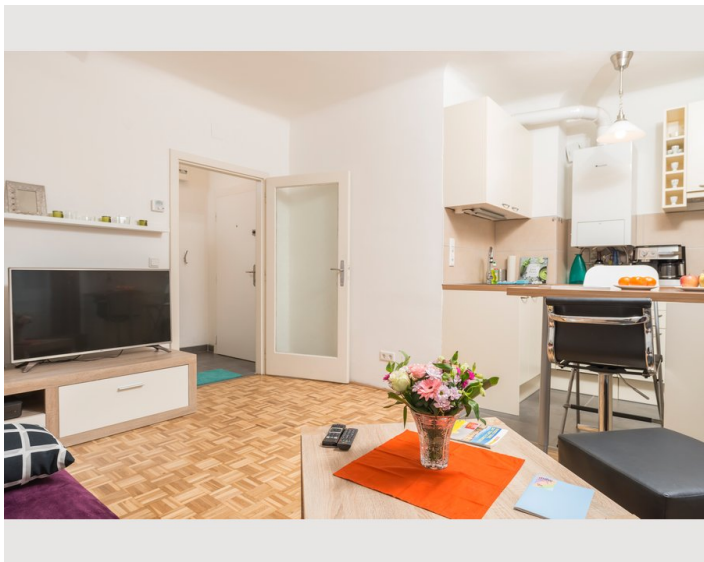
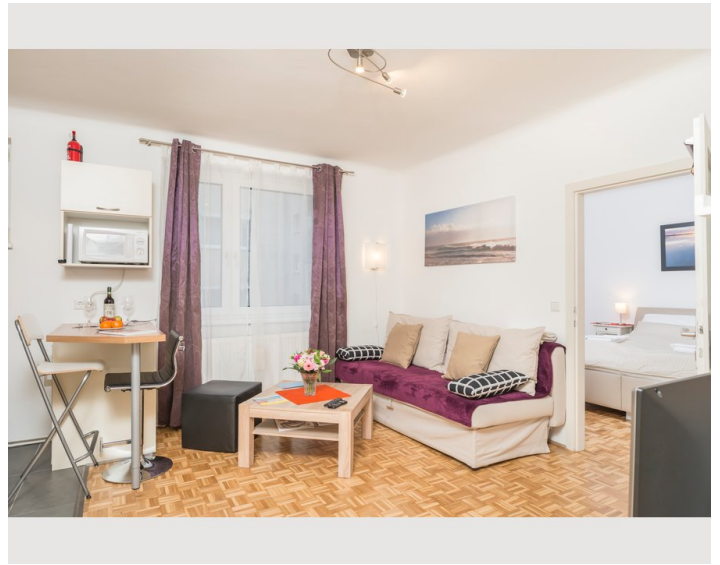
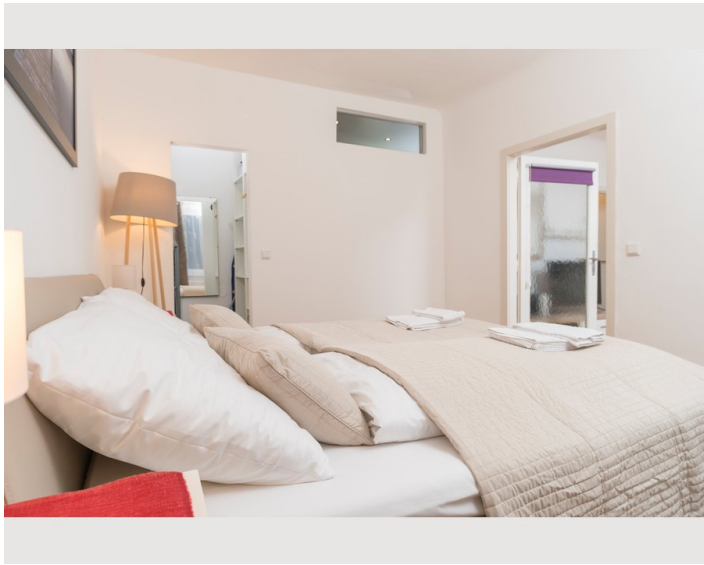
Kitchen

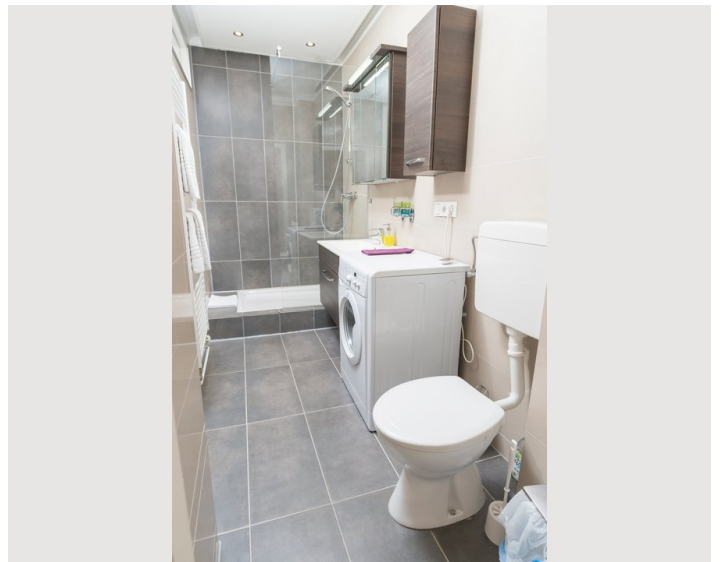
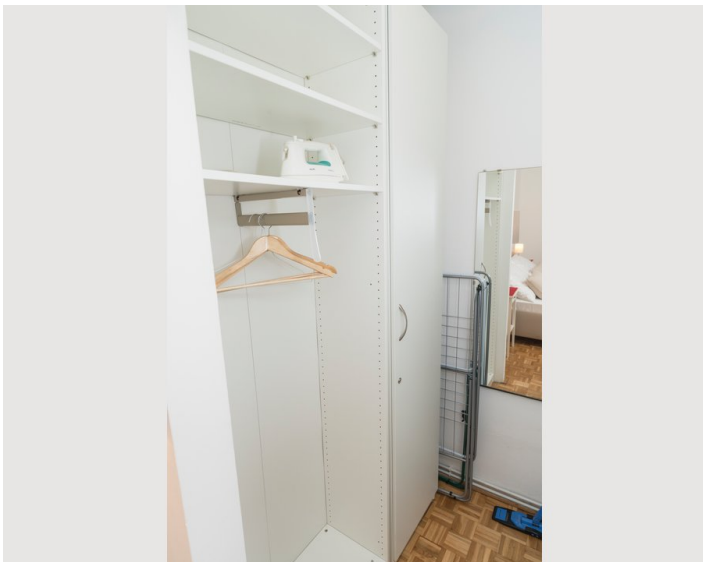
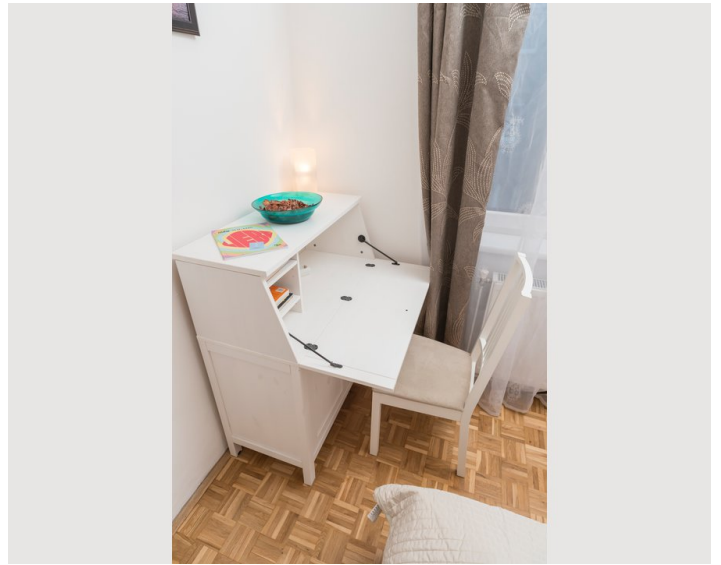
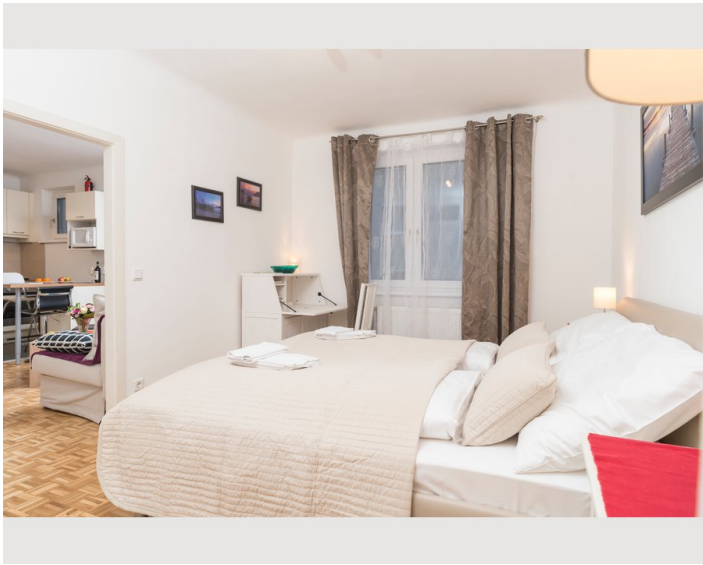
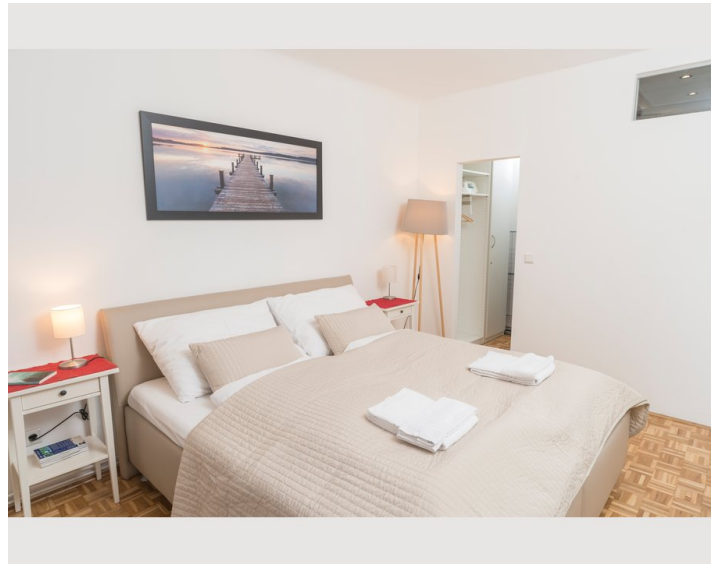
- Private kitchen
- Glasses/Tableware
- Dishwasher
- Cooking utensils
- Espresso machine
- Microwave

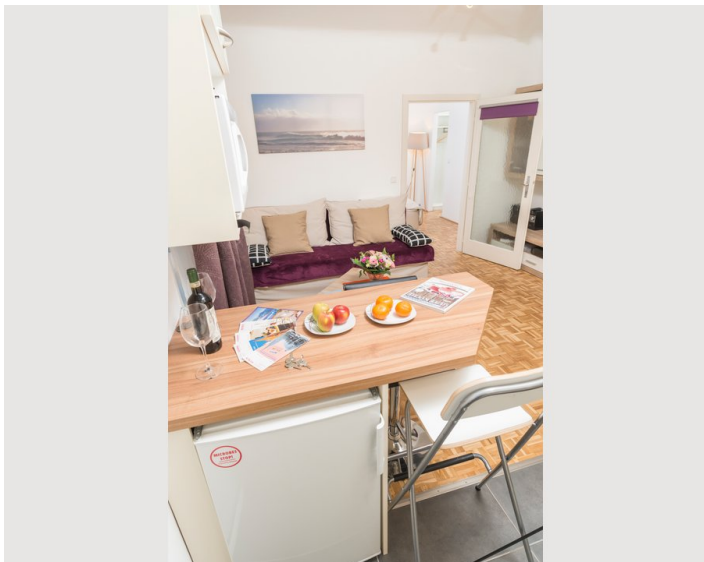
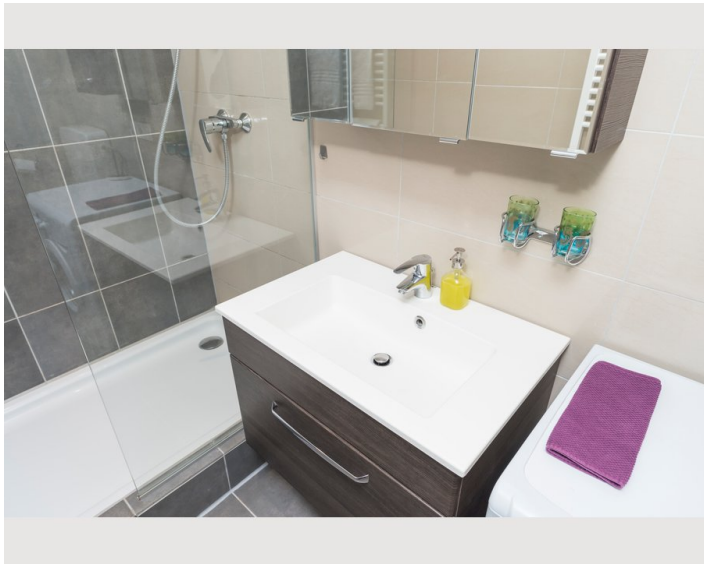
Informations

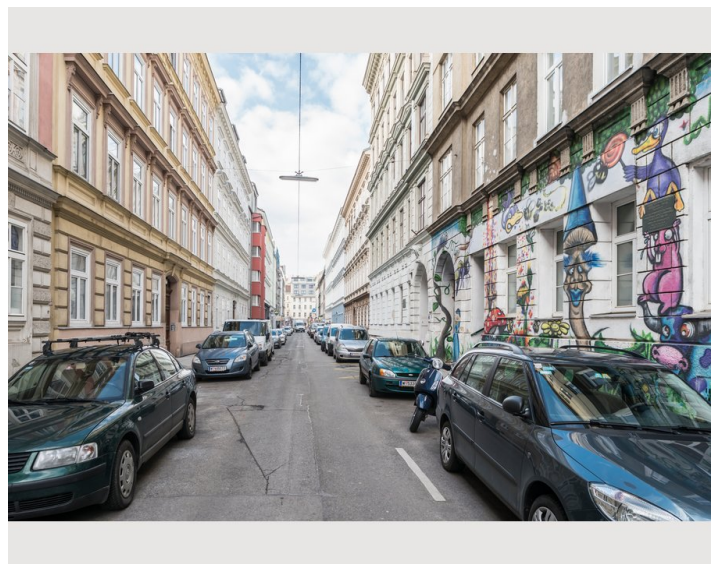
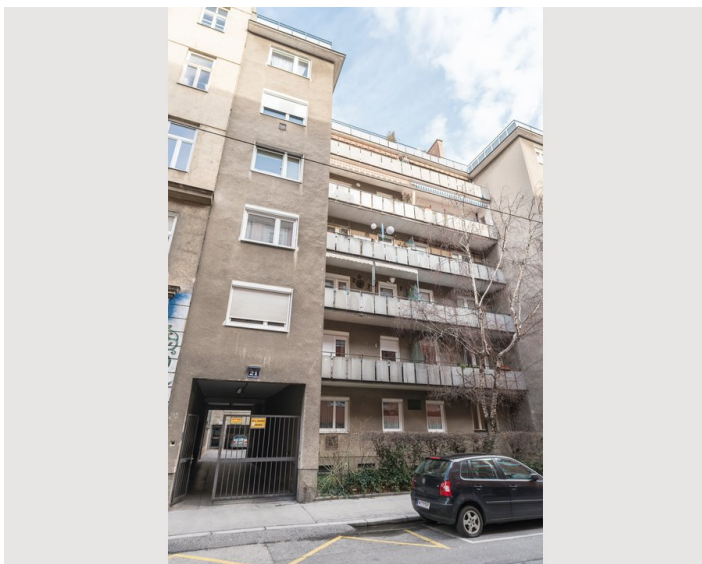
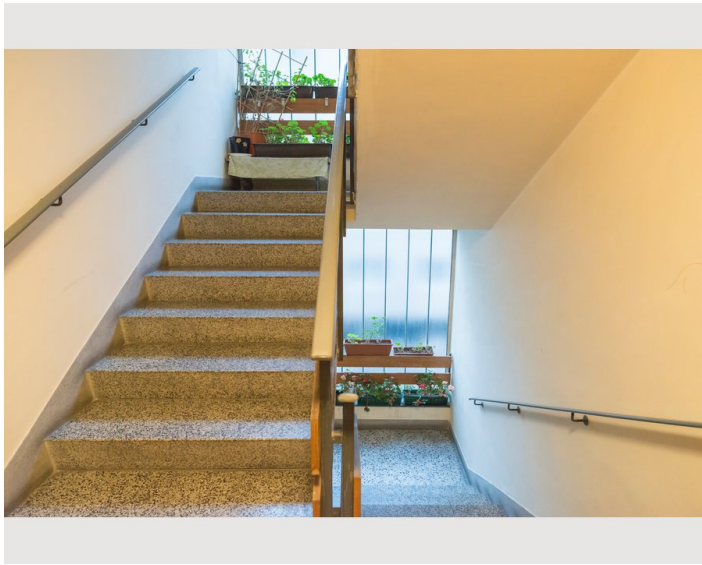
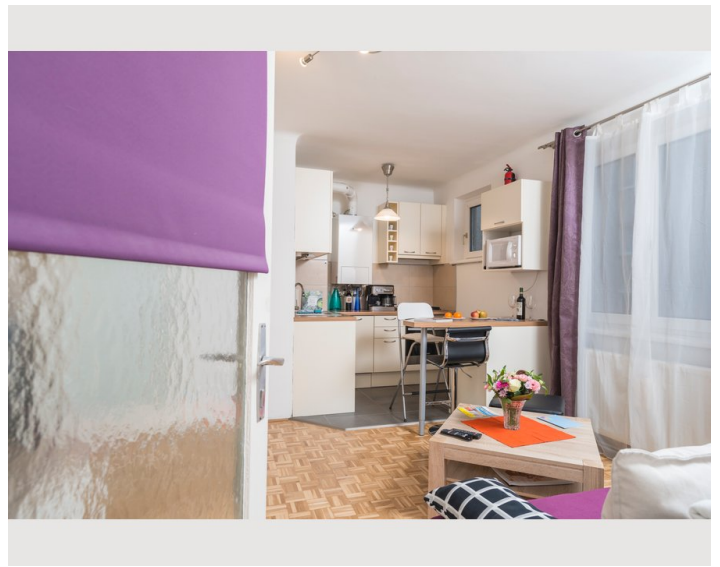
- Suitable for children
- Desk/Workplace
- Regular cleaning free of charge
- Smoking not allowed
- Pets on request

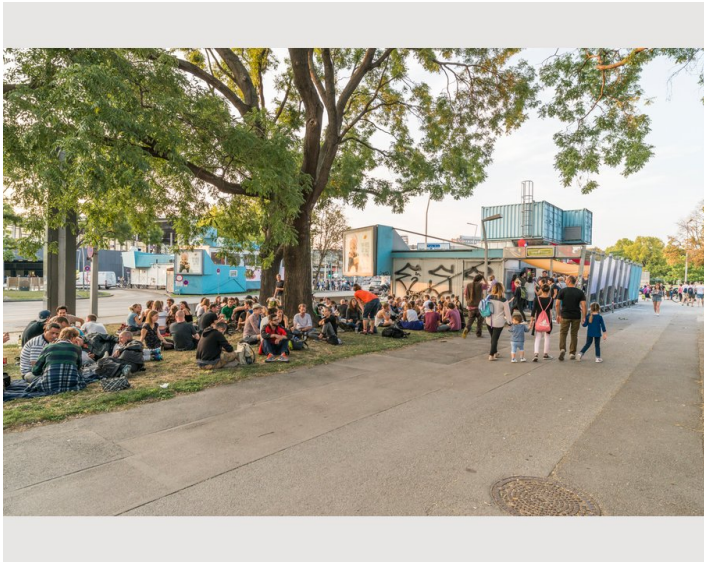
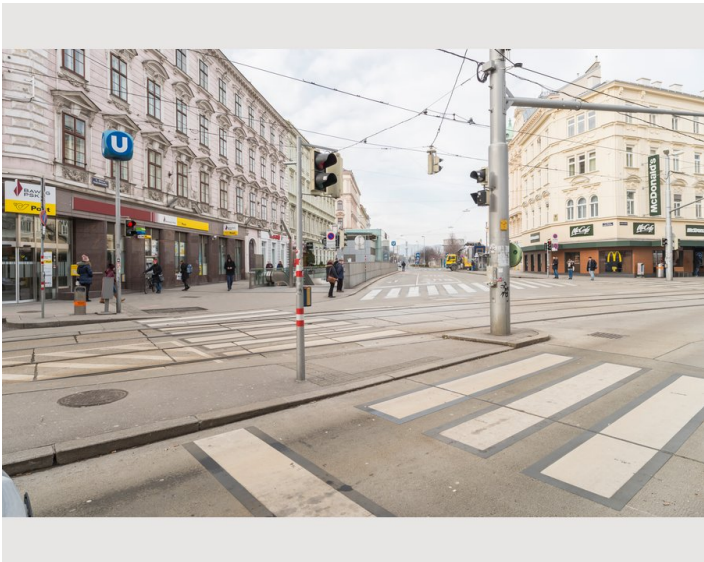
Picture gallery











Infrastructure



Spar 50 meter walking distance

The second district, Leopoldstadt, is a heavily populated yet green urban area bordering the city centre to the Northeast. With an area of almost 20 square kilometres, it is the biggest of the inner districts, spanning nearly 10 kilometres along the Danube river towards the Southeast. The district is part of an artificial island between the Danube River and Danube Canal (Donaukanal), containing large expanses of parks and forests. The wilder forests of the Prater in the South transition into the more formal park and amusement park near the transportation hub Praterstern. The area along the Danube Canal across from the Schwedenplatz is the lively Karmeliter Quarter (Karmeliterviertel), once a Jewish ghetto, today it is the hub of Jewish life in Vienna – don't miss the Karmeliter market or Karmeliter Church. Further North, bordering the 20th district, you will find the lovely Augarten park. In summer, you can enjoy an open-air cinema under the stars here (Kino Wie Noch Nie). With its proximity to the city centre, this district is the perfect starting point to explore the Vienna city centre whilst experiencing the culture and greenery of one of the city's liveliest districts.

The apartment is located on Novaragasse, exactly in the heart of the Leopoldstadt. The location is in between the beautiful Augarten park and the Prater park, both are ideal for long walks and strolls in any weather. A bit livelier is the Karmelitermarkt: Here one encounters Burgenlaender and Turks selling their products on the market, students, Bobos and Orthodox Jews traditionally dressed all interacting vividly. Another level of entertainment awaits in the famous Prater with its various attractions, such as the amusement park, especially the Viennese Giant Ferris Wheel, where you can enjoy a romantic ride at sunset. The nearest metro stations to the apartment are Taborstrasse, connecting you to metro lines U2, or the junction Praterstern station with metro lines U1, U2, short-distant trains S1, S2, S3, S4, S7 and regional train, allowing guests to commute to and from the airport as well as making short day-trips to other attractions around Vienna.

Our guests will find a range of restaurants, cafes and bars all around the apartment. Our nearby favourites include Café Ansari and neighbouring Ramasuri, both offering delicious meals at any time of the day and great outdoor seating possibilities in the warm summer months. For a fancy dinner or brunch experience, cross the Danube Canal and board the Motto am Fluss – a restaurant on a boat right on the Danube Canal. For traditional Austrian dishes, head on over to the famous Schweizerhaus near the Prater amusement park – a large beer garden, well-known for its excellent Stelze (knuckle of pork). For those that prefer Italian, we highly recommend the nearby Eatalico on Praterstraße. A perfect sunset is best experienced with a glass of wine from the Loft Bar & Lounge on the uppermost floor of the Sofitel Hotel on the Danube Canal.

Location

