



3 ROOM APARTMENT, 1190 VIENNA

Spittelau Chillout Lounge top 38

Object number: NOVE29

[View and rent online](#)

Period	11/12/2025 - 11/01/2026
Number of persons	2
Total incl. VAT.	€ 5.935,22
Security deposit	€ 4.300,00

Directed to the courtyard, you can enjoy this cool and silent apartment. On an 80 square meters space, the apartment offers sleeping arrangements for up to 7 people!



Living space

80m²



Maximum occupancy

7 Persons



Complete accommodation [?]

1 Private bathroom 2 Separated bedrooms 1 Living-Sleepingroom



3. floor

Elevator available



Check-in

14:00 - 22:00 Clock



Check-out

00:00 - 11:00 Clock

Sleeping options

Bedroom 1



1x Double bed (1,80 m x 2 m)



1x Single bed

Bedroom 2



2x Single bed

Living and sleeping



2x Sofa bed (1 person)

Descriptiton of accommodation

Only four-minutes away from Nußdorfer Straße, a bright and modern furnished apartment awaits in its beauty to bring the pulse of the city closer to you. Directed to the courtyard, you can enjoy this cool and silent apartment. On an 80 square meters space, the apartment offers sleeping arrangements for up to 7 people with two bedrooms - one with a double bed and a single bed and the other with two single beds and two convertible sofas in the living room. One bathroom with a shower offers relaxation after a busy day of exploring the city. The apartment offers self-catering option with full basic kitchen amenities, enables guests to prepare their own meal before and after a day of exploring the city. WIFI is available and provided for free throughout the apartment. Airport shuttle can be arranged upon request.

Equipment & Features



Basic equipment

- Internet/Wifi
- Private washing machine
- Towels
- Vacuum cleaner
- Cleaning utensils
- TV
- Bedclothes
- Private toilet
- Iron & ironing board
- Hairdryer



First supply

- Toilet paper
- Soap
- shampoo
- Nespresso capsules



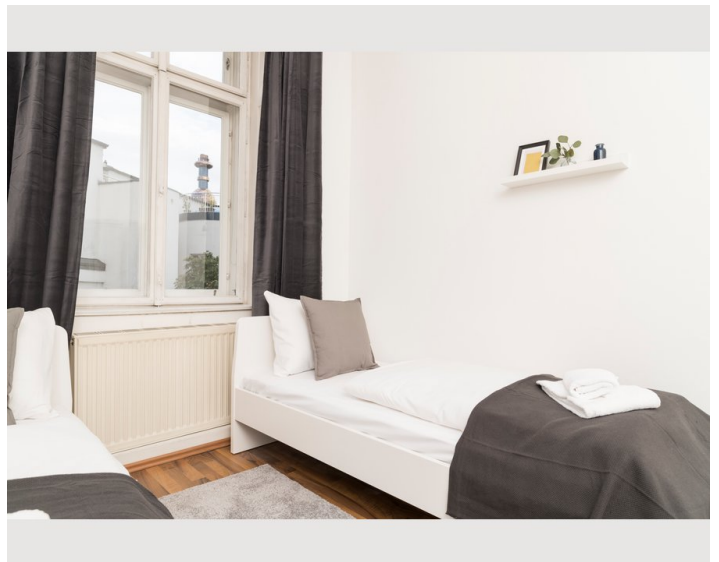
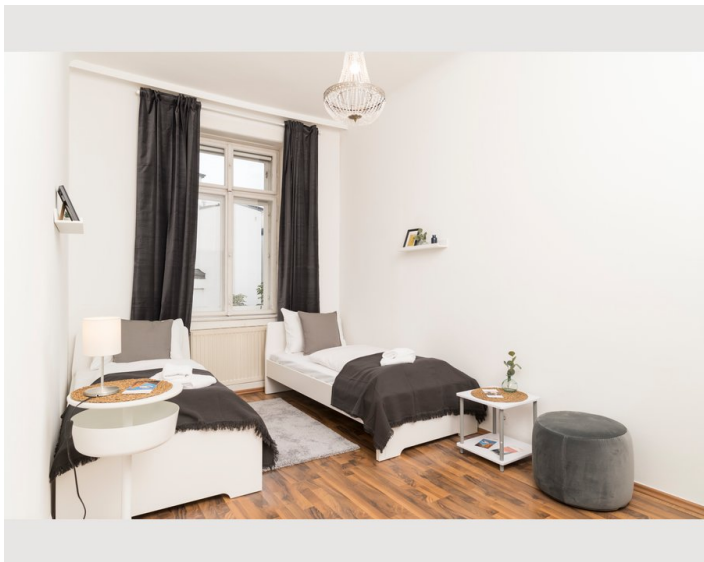
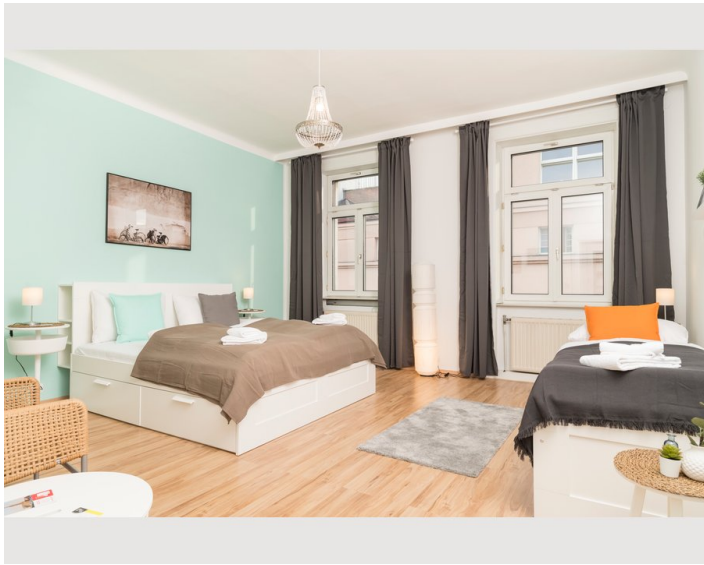
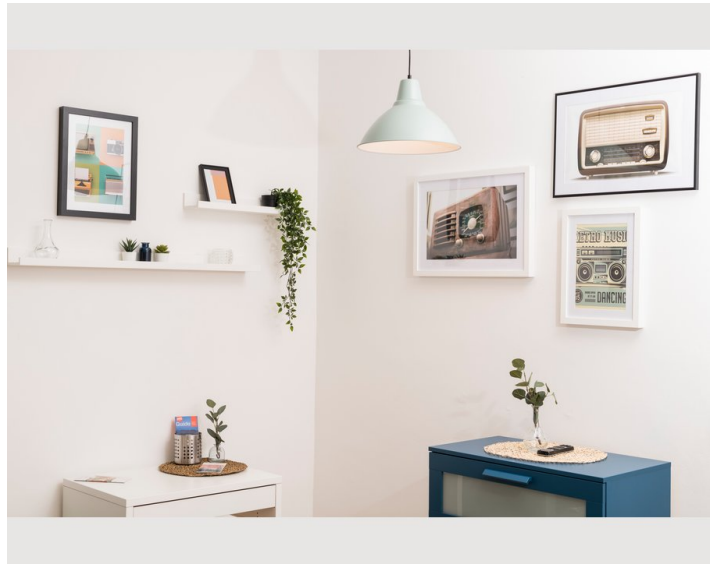
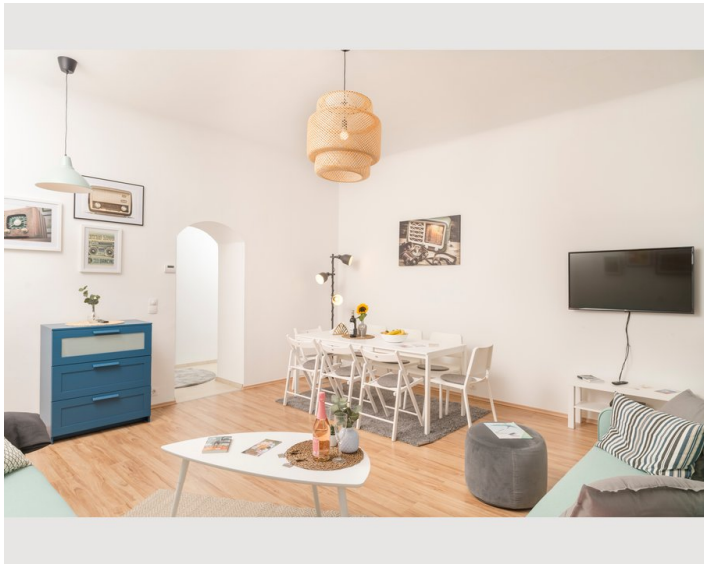
Kitchen

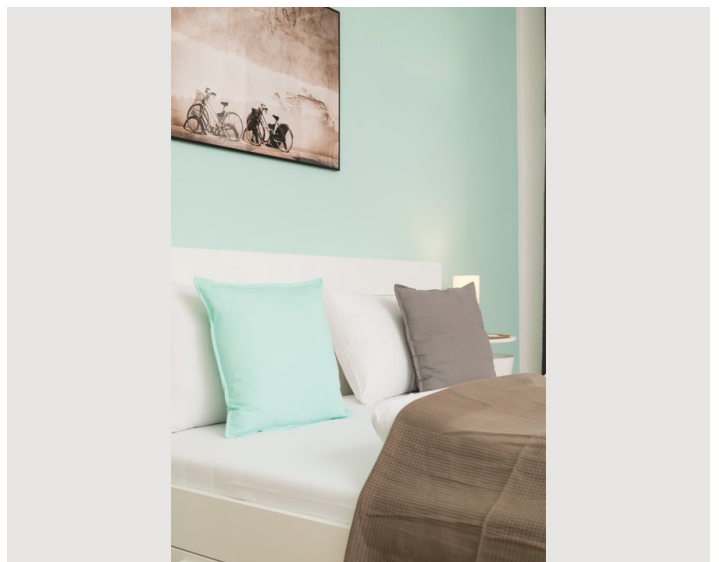
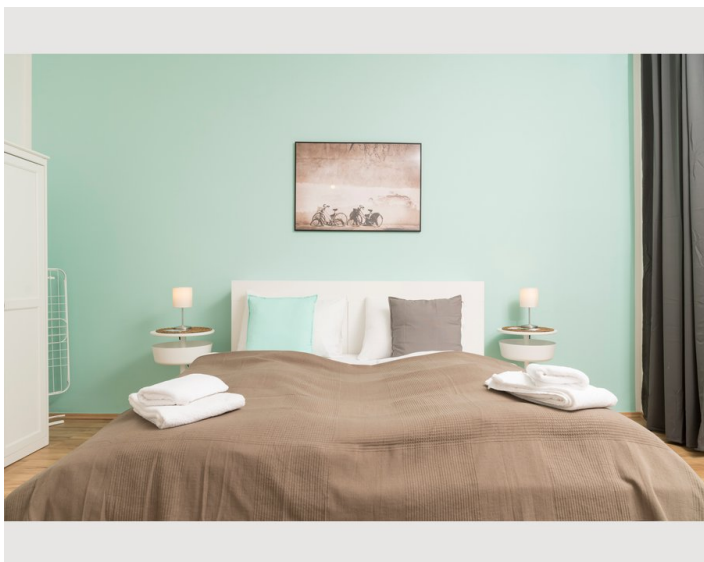
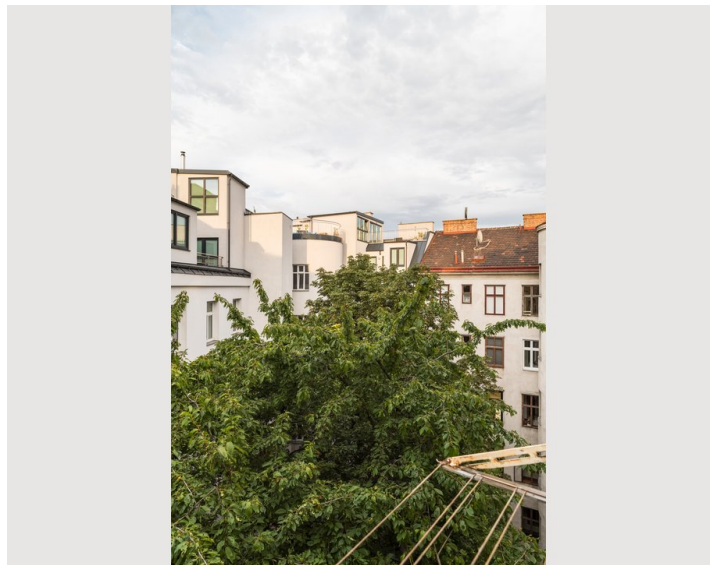
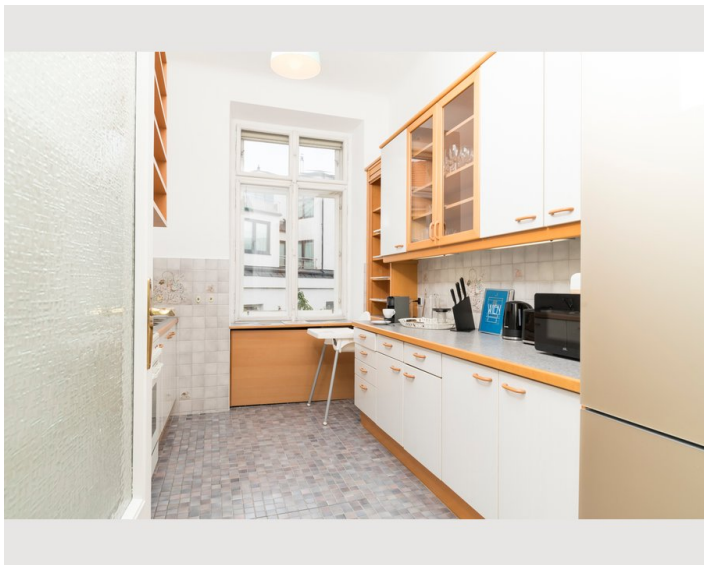
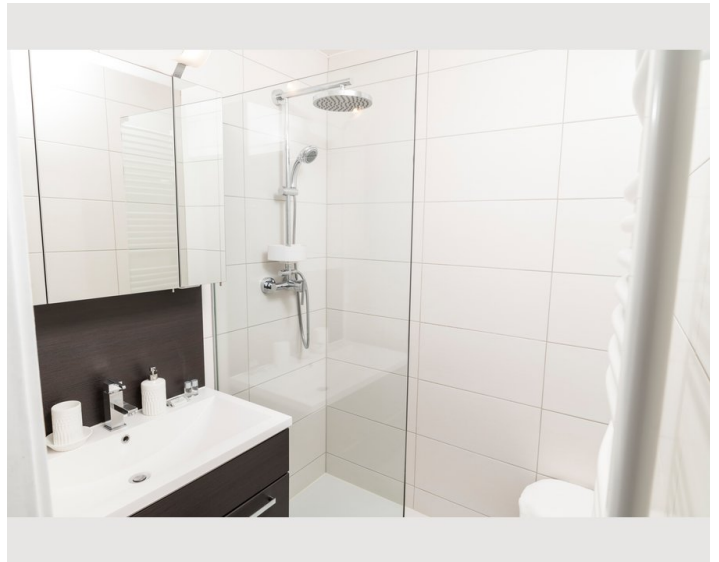
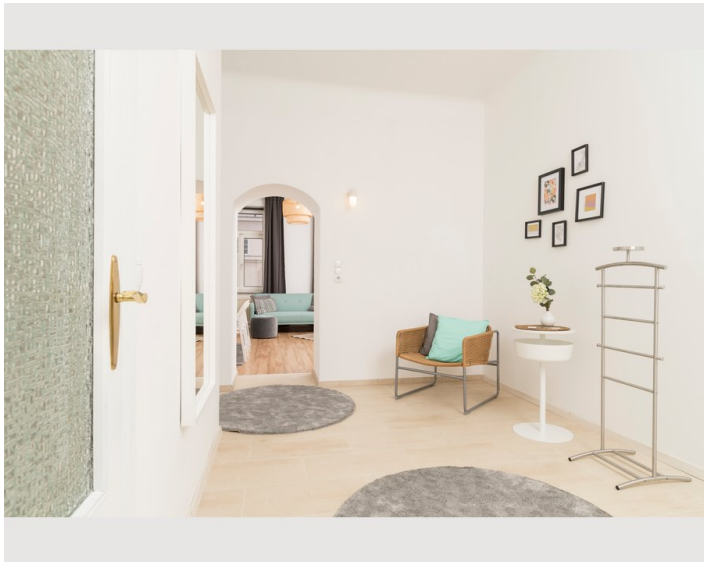
- Private kitchen
- Glasses/Tableware
- Filter coffee
- Cooking utensils
- Espresso machine
- Microwave

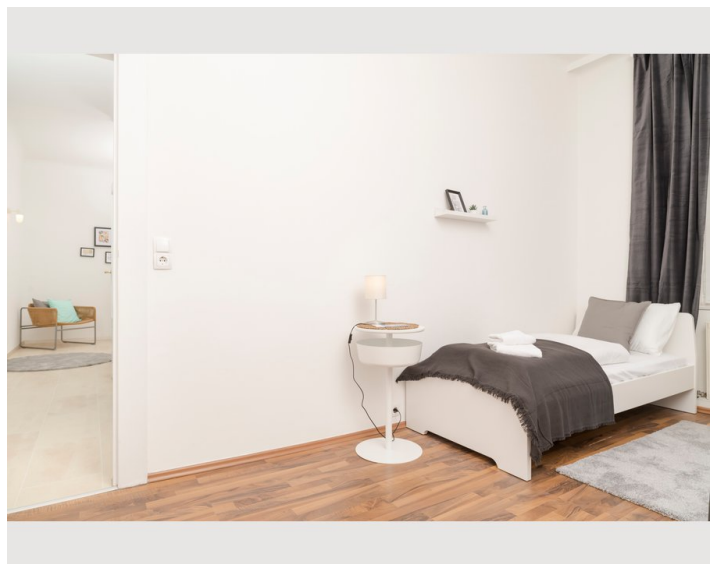
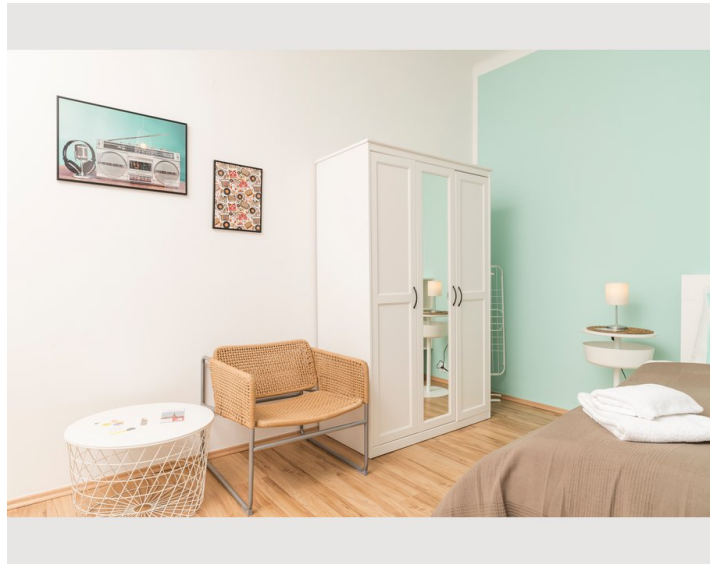
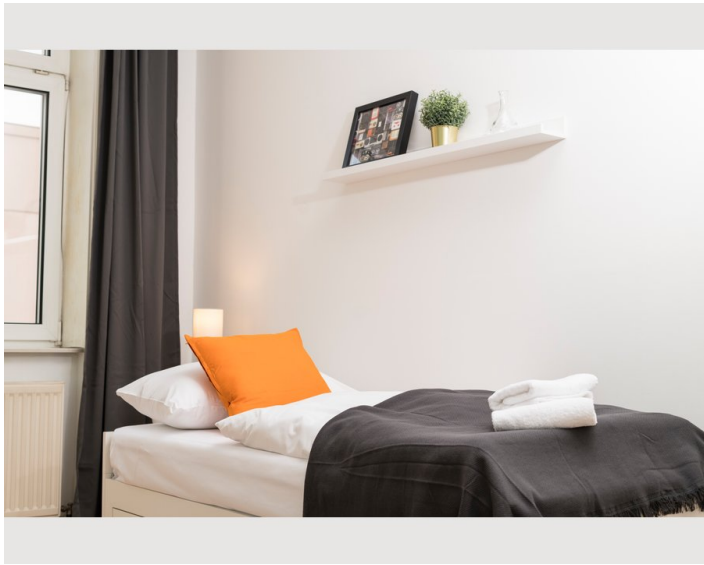
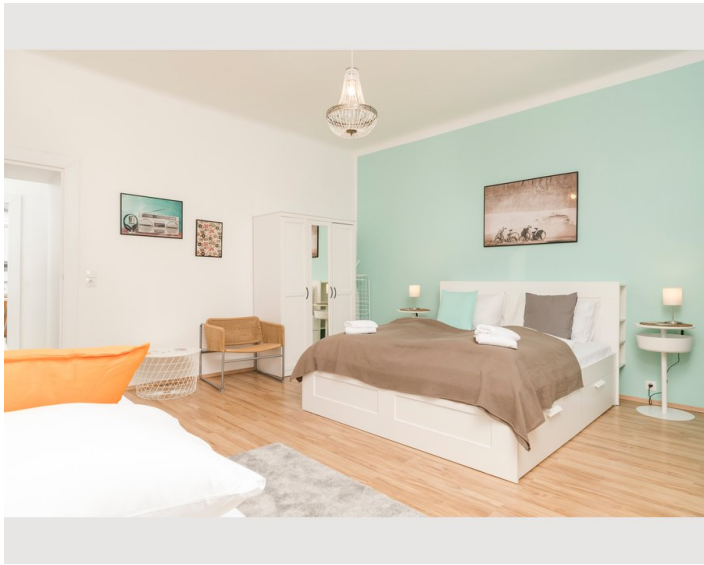
Informations

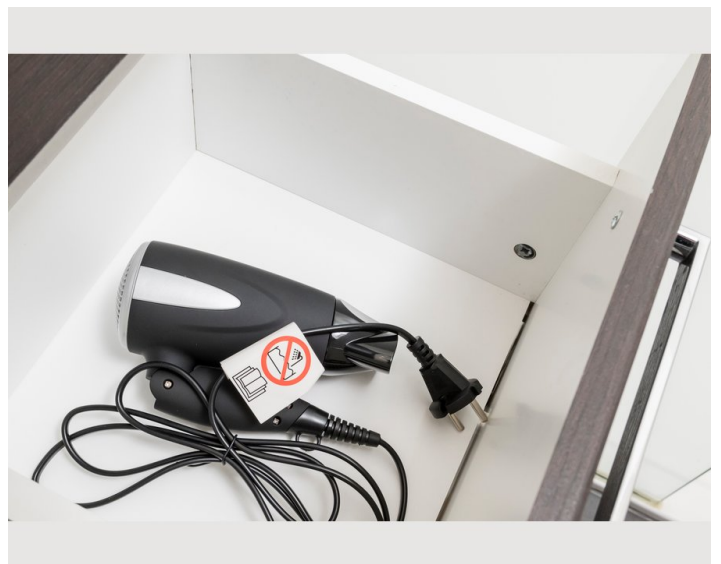
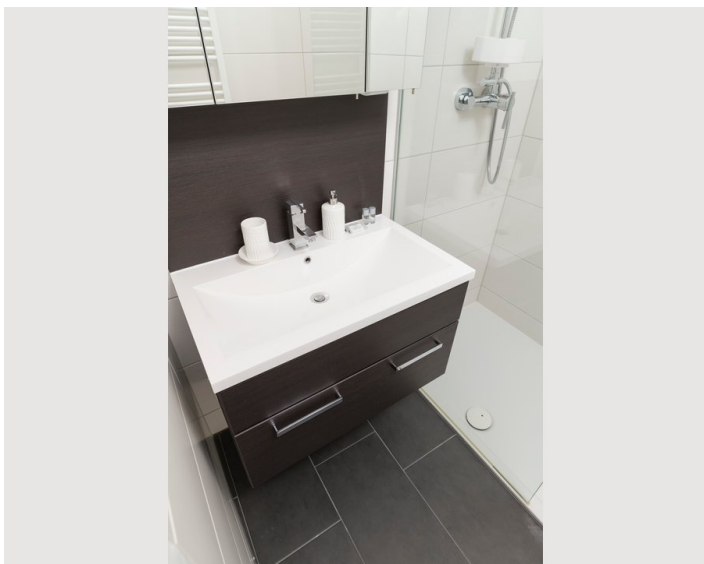
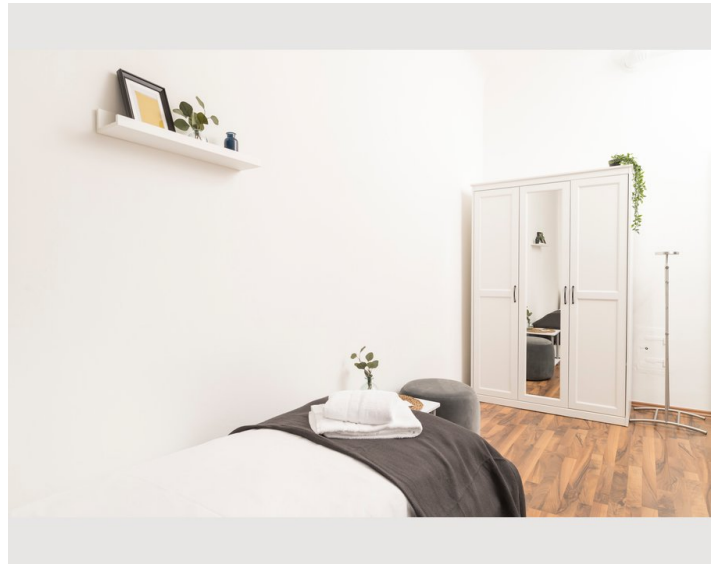
- Suitable for children
- Short-term parking zone subject to a charge
- Private entrance
- Regular cleaning free of charge
- Smoking not allowed
- Desk/Workplace
- Pets on request

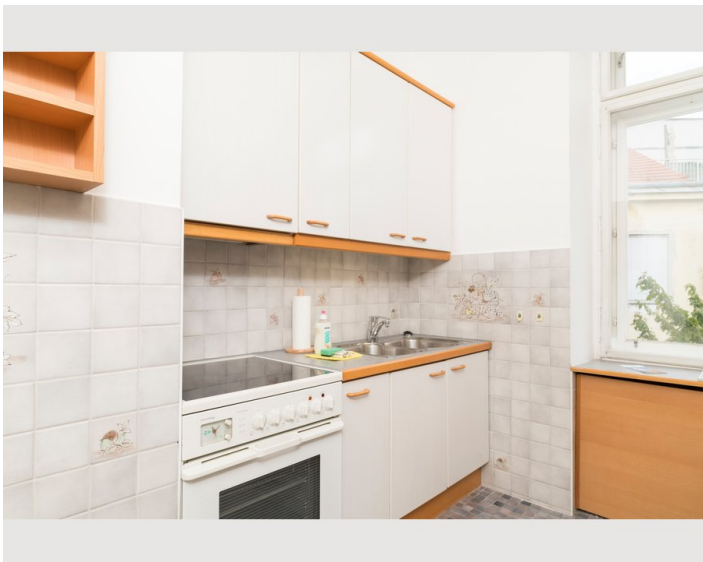
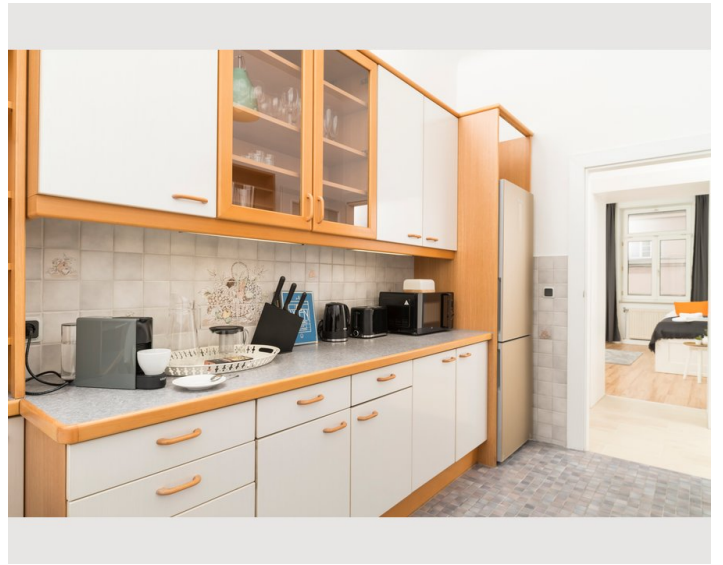
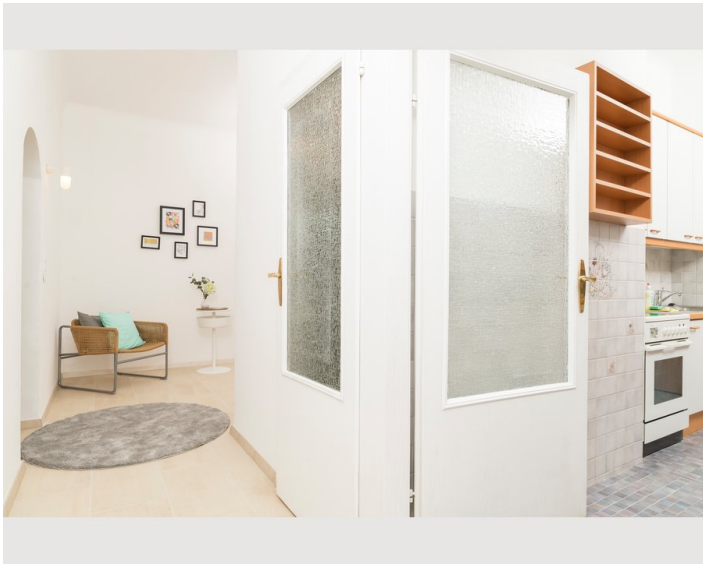
Picture gallery











Location

