



2 ZIMMER WOHNUNG, 1150 VIENNA

Fancy Viennese Style Apartment close to Mariahilferstraße

Object number: BJTO1

[View and rent online](#)

Move in - relax - feel good: beautiful renovated apartment in the old building style in a central location in the 15th district with whirlpool bath tub and parking space - maximum feel-good factor for your stay in Vienna

Period	14/06/ - 14/07/2025
Number of persons	2
Total incl. VAT.	€ 2.335,04
Security deposit	€ 1.700,00



Living space

58m²



Maximum occupancy

3 Persons



Complete accommodation ?

2 private bathrooms 1 Separated bedroom



Ground floor



Check-in

15:00 - 22:00 Clock



Check-out

00:00 - 11:00 Clock

Sleeping options

Sleeping room



1x Double bed (1,60 m x 2 m)



1x Sofa bed (1 person)

Description of accommodation

The apartment is on the ground floor (raised ground floor) of a very quiet residential building. Bicycle parking space and cellar compartment are available.

Special features of the apartment are the beautiful old building style, the ethanol fireplace and the bathtub with whirlpool function (directly in the bedroom).

Equipment features



Basic equipment

- Internet/Wifi
- Private washing machine
- Bedclothes
- Private toilet
- Vacuum cleaner
- Cleaning utensils
- TV
- Private dryer
- Towels
- Private parking space
- Iron & ironing board
- Hairdryer



First supply

- Toilet paper
- Nespresso capsules



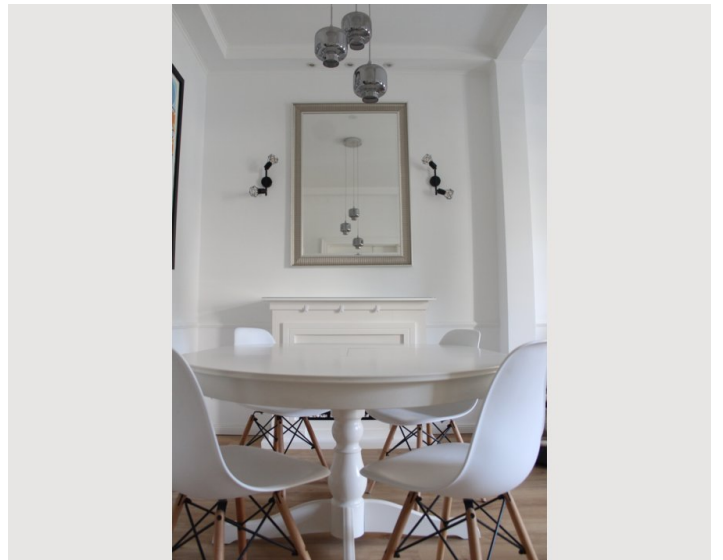
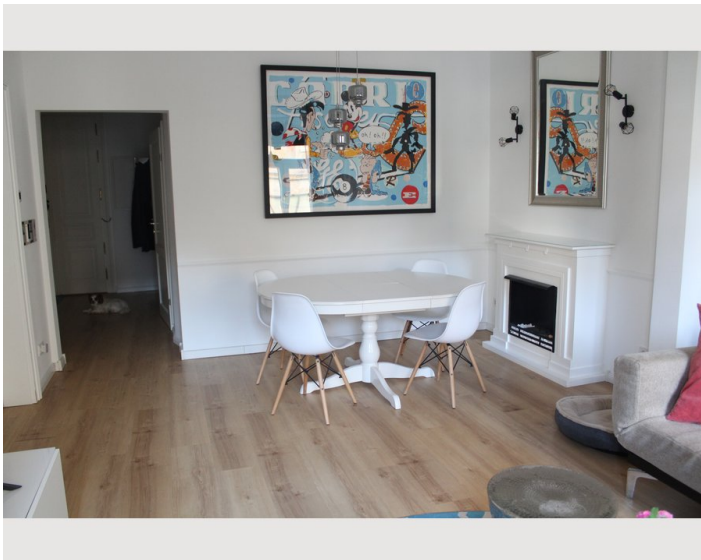
Kitchen

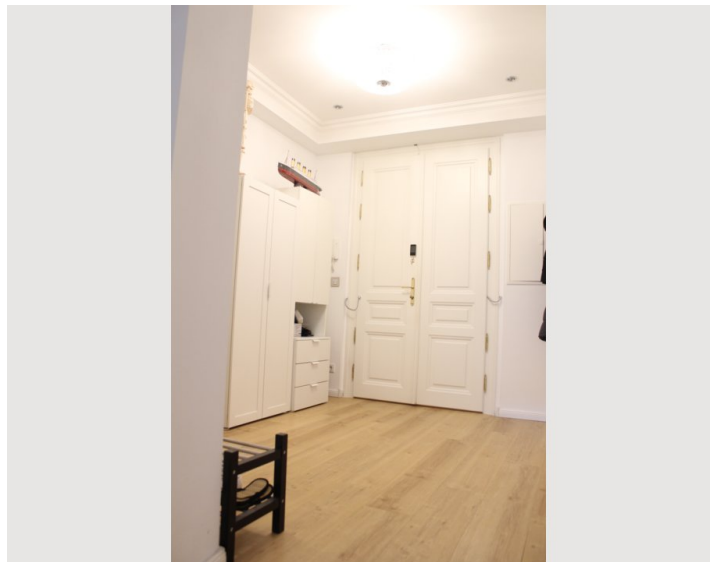
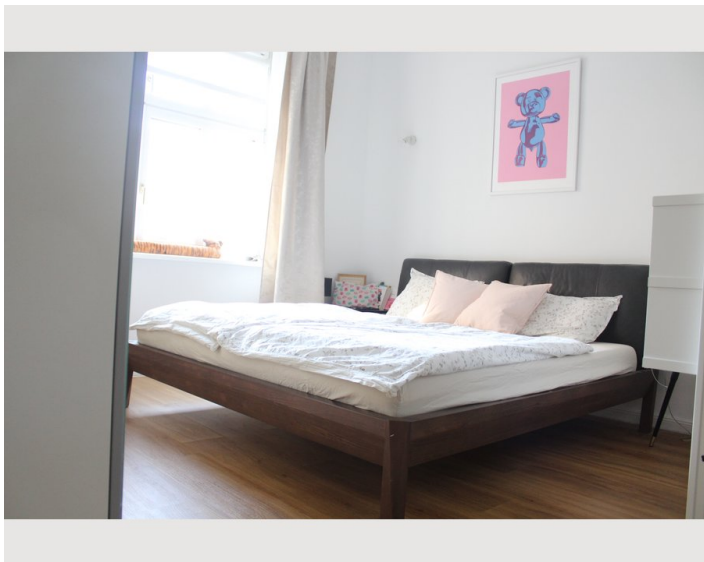
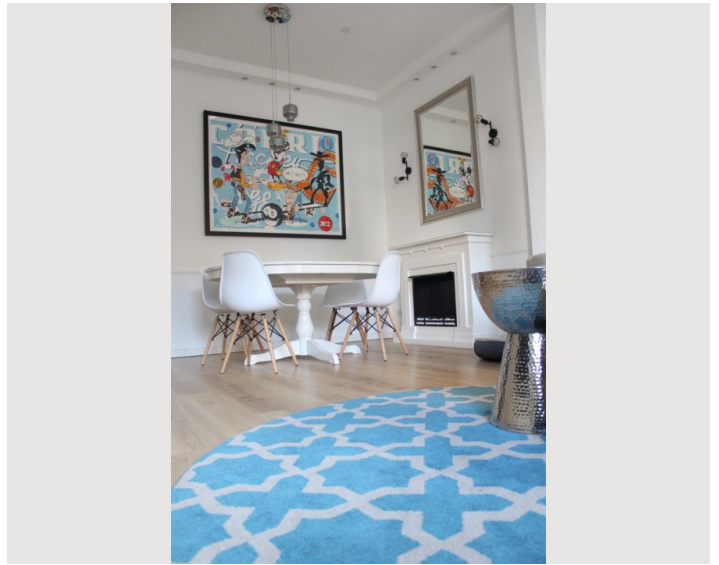
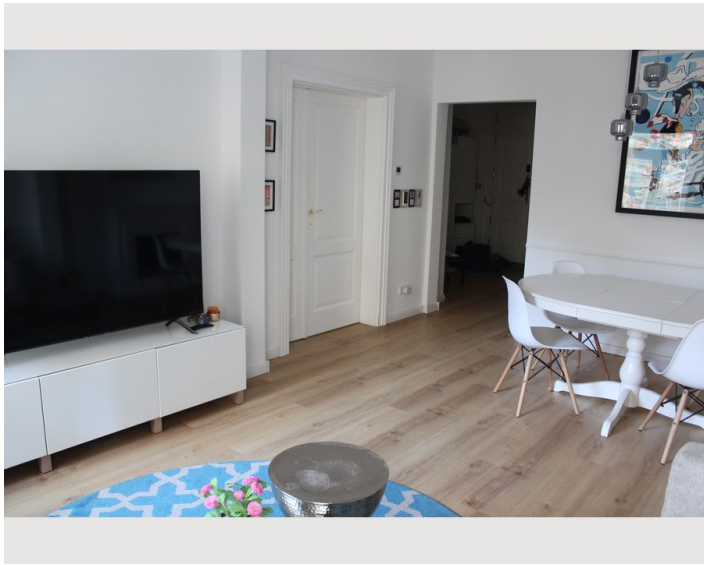
- Private kitchen
- Glasses/Tableware
- Dishwasher
- Cooking utensils
- Espresso machine
- Microwave

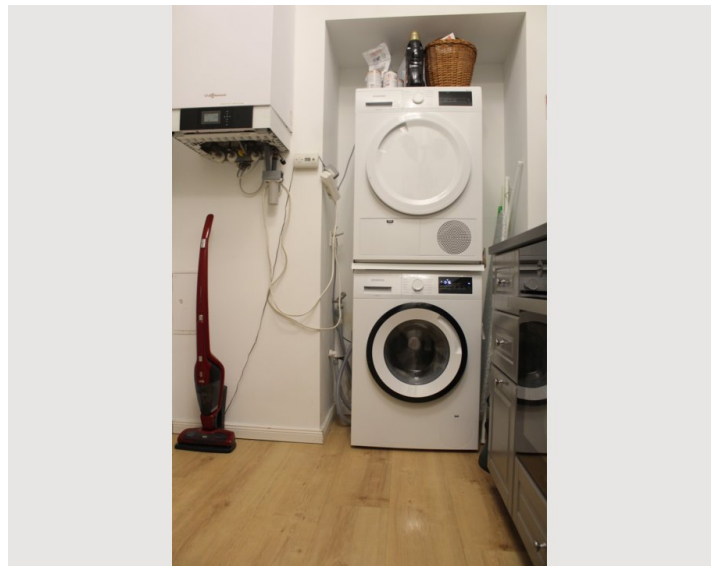
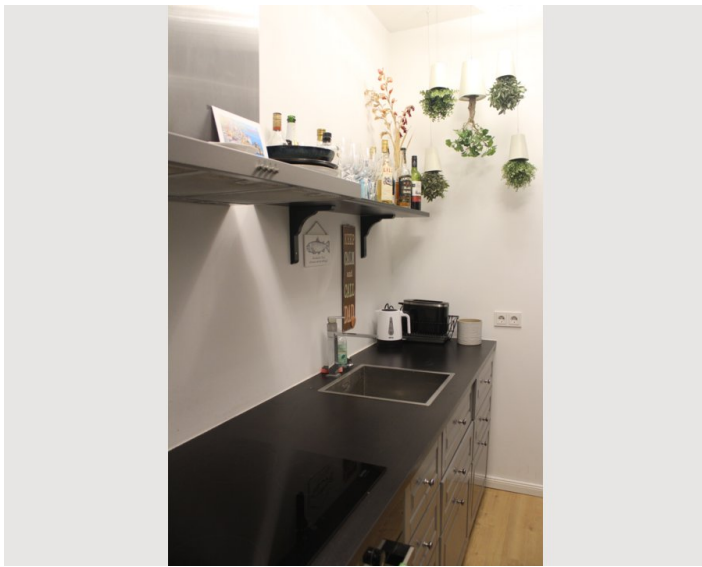
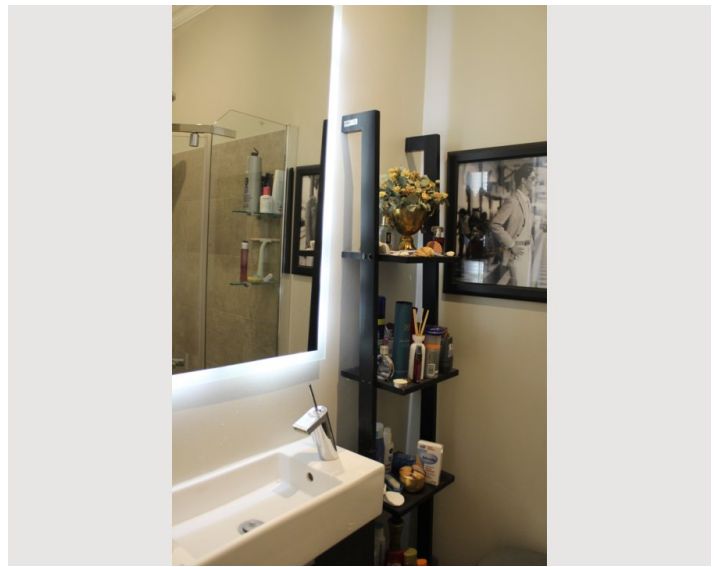
Informations

- Not suitable for children
- Short-term parking zone subject to a charge
- Pets on request
- Smoking not allowed
- Desk/Workplace

Picture gallery








Infrastructure

 Westbahnhof 10 Minutes Walking Distance

 3 Minutes Walking Distance

 City Centre 20 Minutes by subway

Central location in the 15th district in the immediate vicinity of the inner and outer Mariahilferstrasse and the new pedestrian zone. Maximum 10 minutes walk to Westbahnhof. Tram and underground stations in the immediate vicinity (Vienna city center 15-20 minutes away).

The beautiful Schönbrunn Palace can be reached in 10-15 minutes on foot. Excellent local supply through numerous shops.

The autobahn (A1 Westautobahn) is easily accessible by car. A private parking space is located in a private parking lot directly opposite of the apartment.

Location

