



STUDIO APARTMENT, 1020 VIENNA

Charming, stylish, centrally located small flat

Object number: KLG M1

[View and rent online](#)

Period	29/05/ - 29/06/2025
Number of persons	2
Total incl. VAT.	€ 1.640,62
Security deposit	€ 1.300,00

Newly restored, french. Balcony with view into the garden, tastefully furnished, underground 150m, tram directly in front of the house, 10 minutes walk to the centre, 15 minutes walk to the university, very cosy, quiet location.



Living space

48m²



Maximum occupancy

2 Persons



Complete accommodation [?]

1 private bathroom 1 Living-Sleepingroom



5. floor



Check-in

10:00 - 16:00 Clock



Check-out

13:00 - 14:00 Clock

Sleeping options

Living and sleeping



1x Double bed (1,60 m x 2 m)



1x Sofa bed (1 person)

Descripton of accommodation

Very tastefully, newly and stylishly furnished flat. Quiet location, view into the garden, french. Balcony, parquet floor, air conditioning, washing machine, dishwasher, Nespresso machine, Wilan, TV, bed linen, towels, full crockery, bright and friendly, large park (Augarten) 150 m away, various in-locations. An oasis of well-being and yet in the centre.

Equipment features



Basic equipment

- Balcony
- TV
- Bedclothes
- Private toilet
- Vacuum cleaner
- Cleaning utensils
- Internet/Wifi
- Private washing machine
- Towels
- Aircondition
- Iron & ironing board
- Hairdryer



First supply

- Toilet paper
- Soap
- Fridge filling on request
- shampoo
- Nespresso capsules



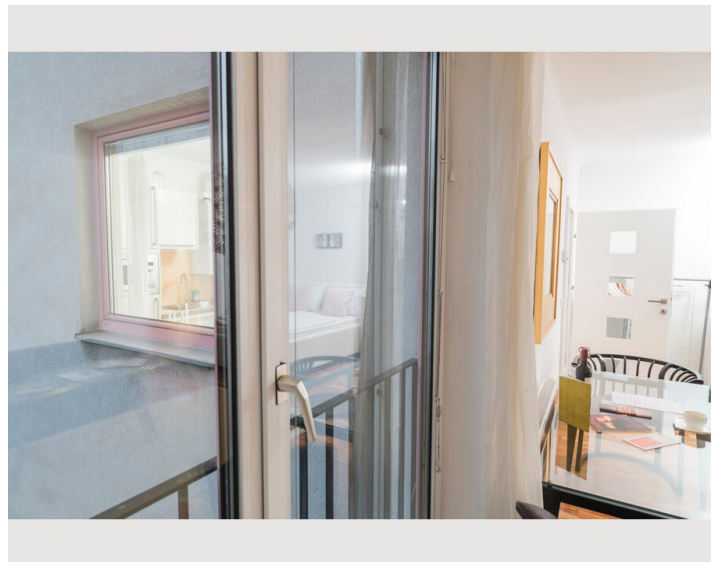
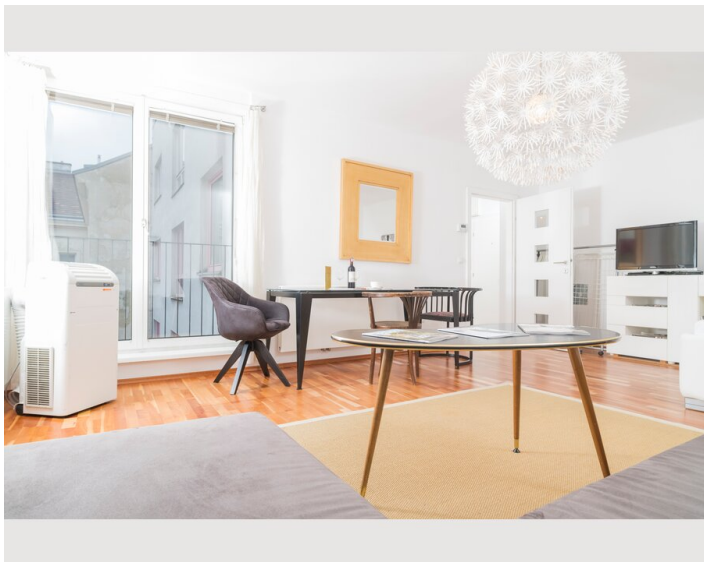
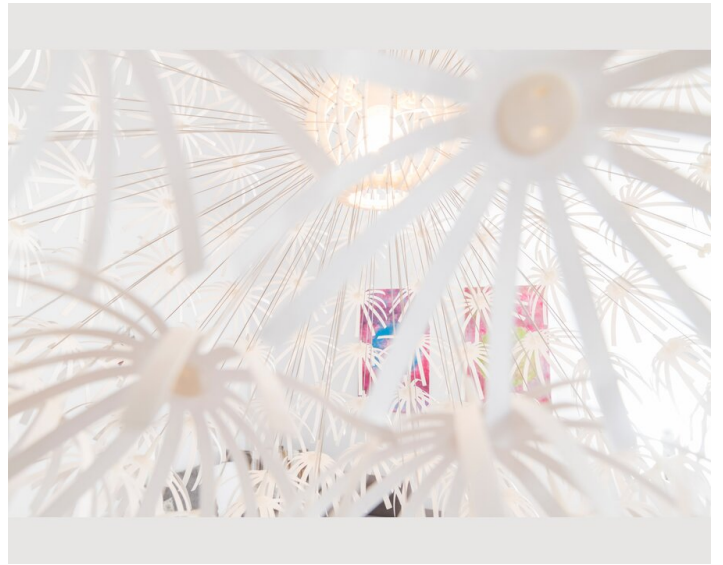
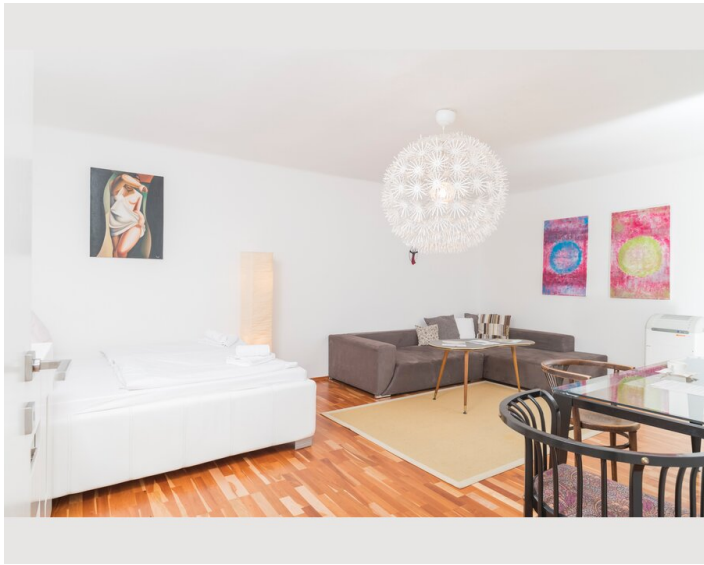
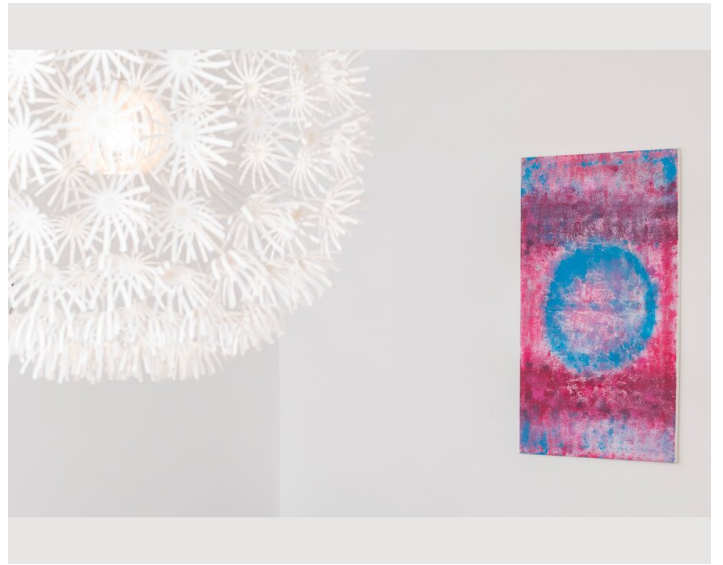
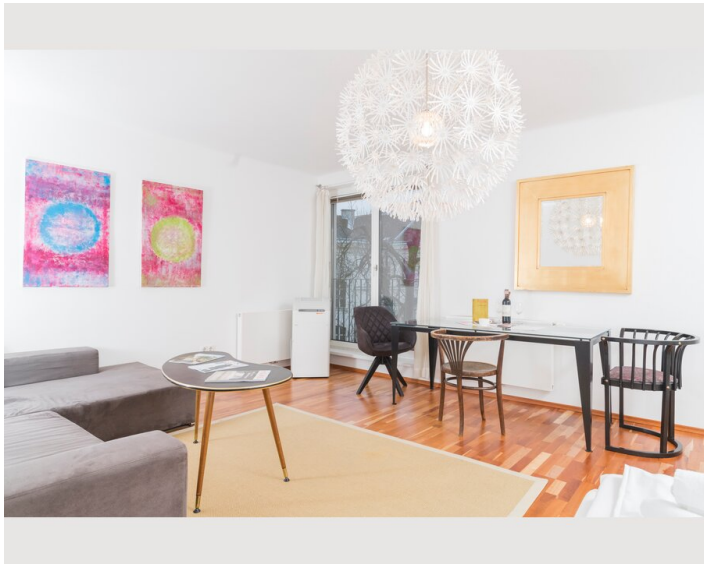
Kitchen

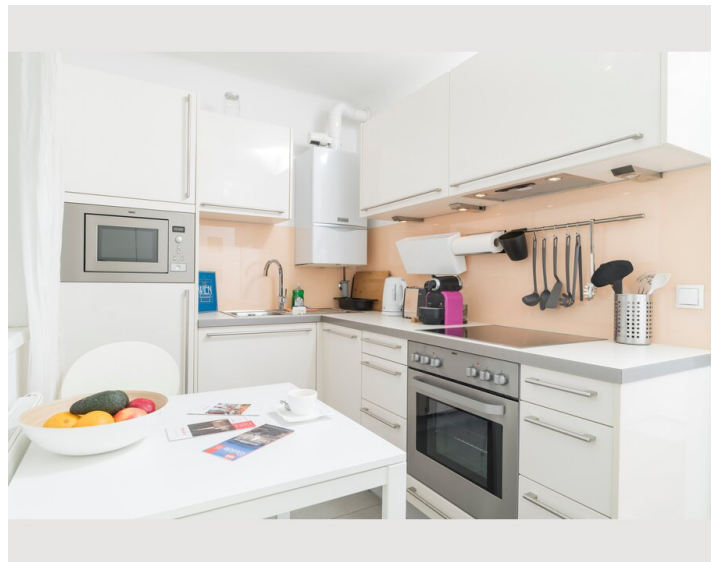
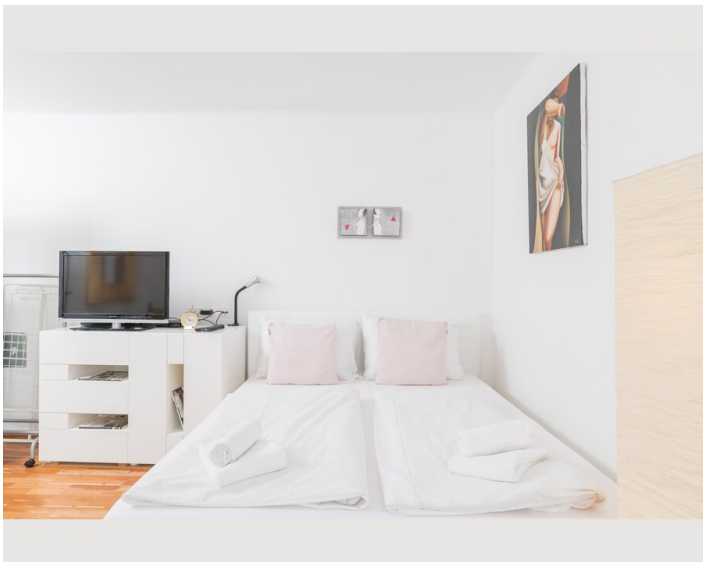
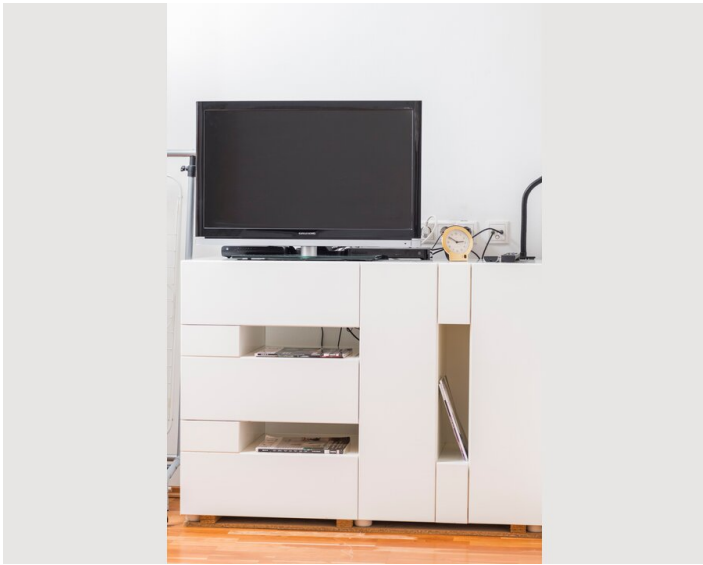
- Private kitchen
- Glasses/Tableware
- Dishwasher
- Cooking utensils
- Espresso machine
- Microwave

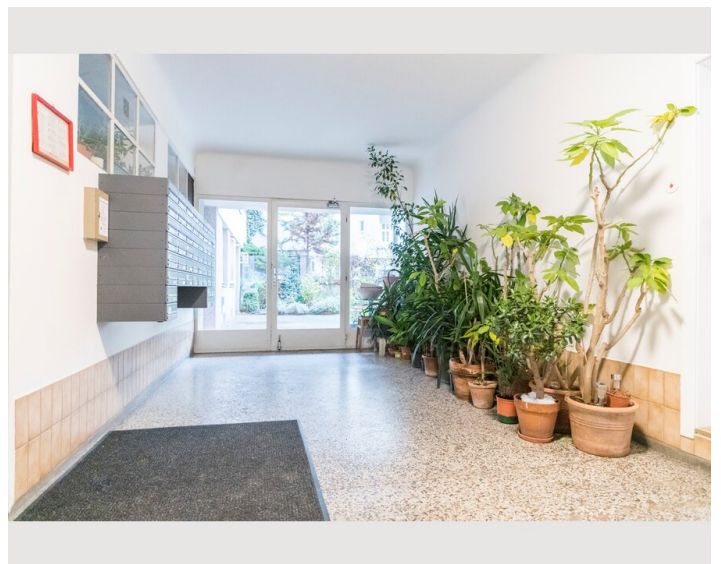
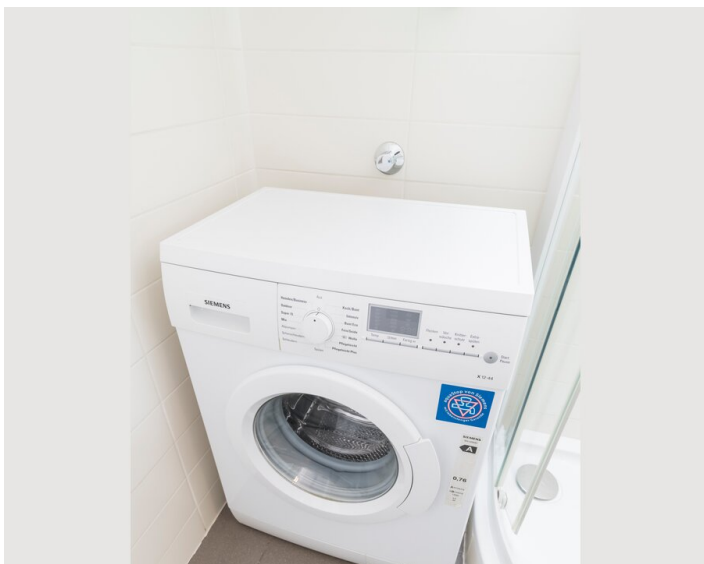
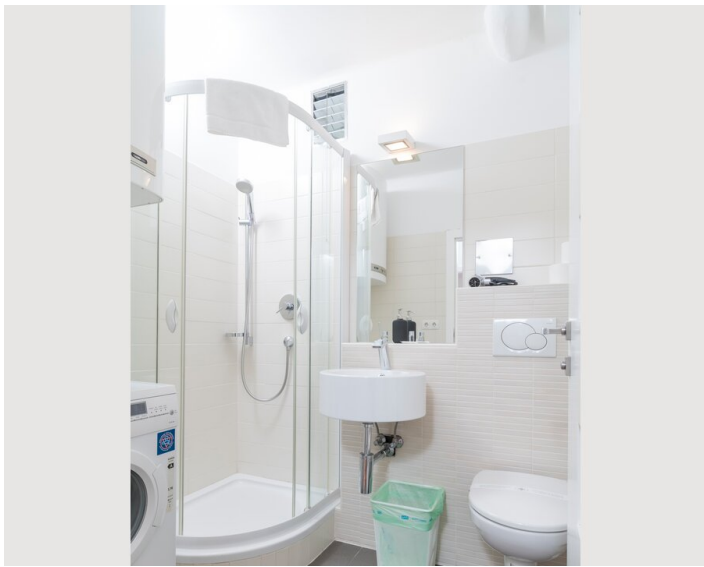
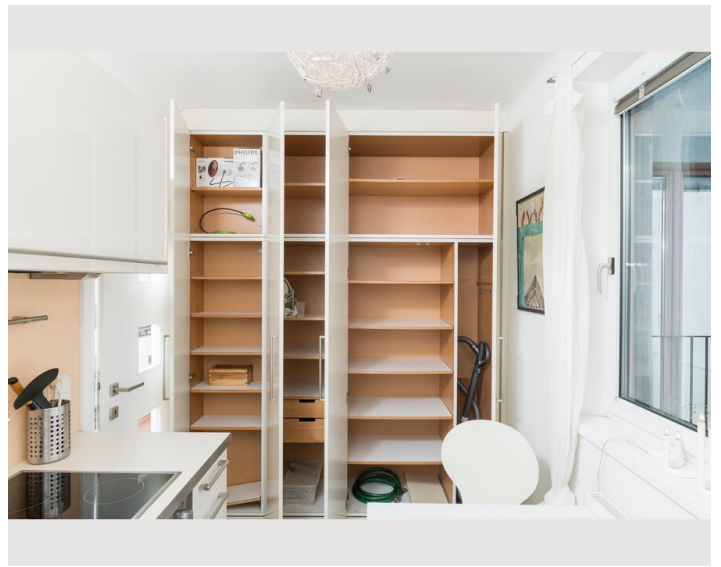
Informations

- Smoking not allowed
- Desk/Workplace
- Pets allowed
- Bicycle room free of charge
- Short-term parking zone subject to a charge
- Private entrance
- Regular cleaning at extra cost

Picture gallery







Infrastructure

📧 Email

Supermarket next door, tram and metro next door, walking distance to the centre 10 minutes

Location

