



2 ROOM APARTMENT, 1100 VIENNA

## Monte Laa

Object number: KARG1

[View and rent online](#)

// Living space approx. 56.16 m<sup>2</sup> // plus approx. 6.90 m<sup>2</sup> loggia //  
anteroom // 1 bedroom // eat-in kitchen // Bathroom with bathtub //  
separate toilet // storage room

<b>Period</b>	12/12/2025 - 12/01/2026
<b>Number of persons</b>	2
<b>Total</b> incl. VAT.	€ 1.524,34
Security deposit	€ 1.200,00



### Living space

63m<sup>2</sup>



### Maximum occupancy

4 Persons



### Complete accommodation <sup>?</sup>

1 Private bathroom 1 Separated bedroom 1 Living-Sleepingroom



### 3. floor

Elevator available



### Check-in

07:00 - 12:00 Clock



### Check-out

09:00 - 14:00 Clock

## Sleeping options

### Sleeping room



1x Double bed (1,60 m x 2 m)

### Living and sleeping



1x Sofa bed (2 persons)

## Descripton of accommodation

FULLY FURNISHED 2-BEDROOM APARTMENT WITH CAR GARAGE AND BALCONY!

The apartment is located in Vienna 10, Moselgasse 2 in a 2007 built residential complex. It has an approximately 6.90 m<sup>2</sup> southwest facing loggia.

The parking lot is located in the garage.

In addition, a laundry room and a bicycle and stroller storage room in the plant. There is an elevator.

## Equipment & Features



### Basic equipment

- Loggia
- Private dryer
- Private toilet
- Iron & ironing board
- Hairdryer
- Private washing machine
- Towels
- Vacuum cleaner
- Cleaning utensils



### First supply

- Toilet paper
- Soap
- shampoo



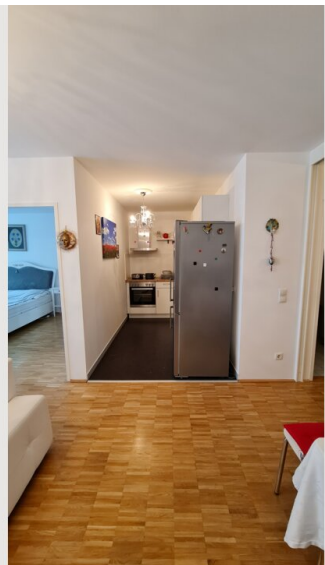
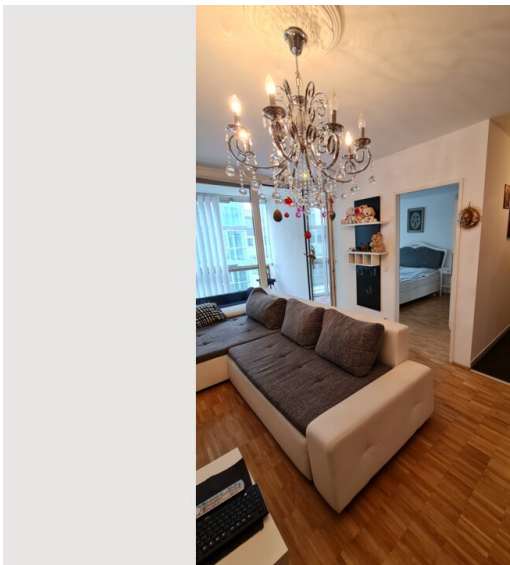
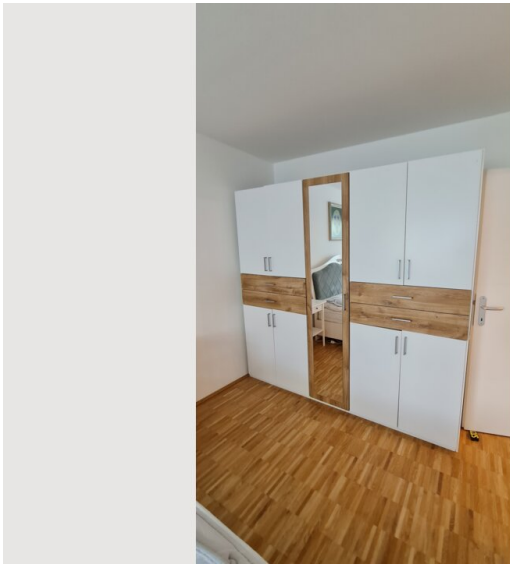
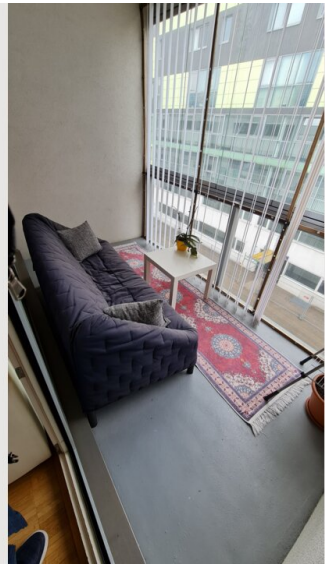
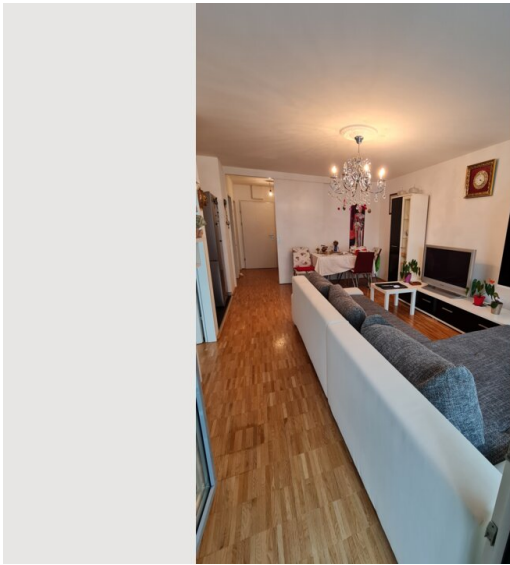
### Kitchen

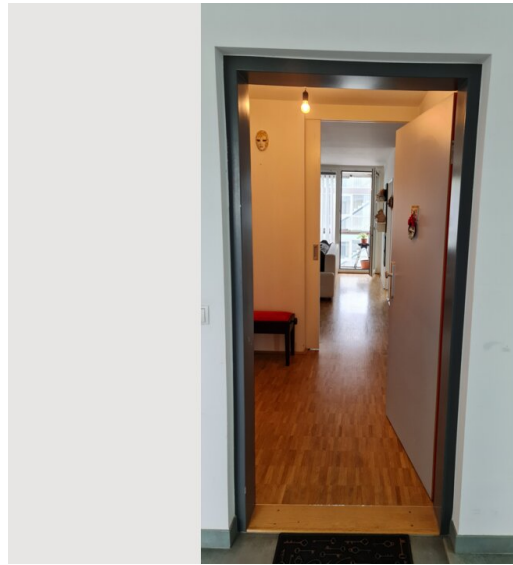
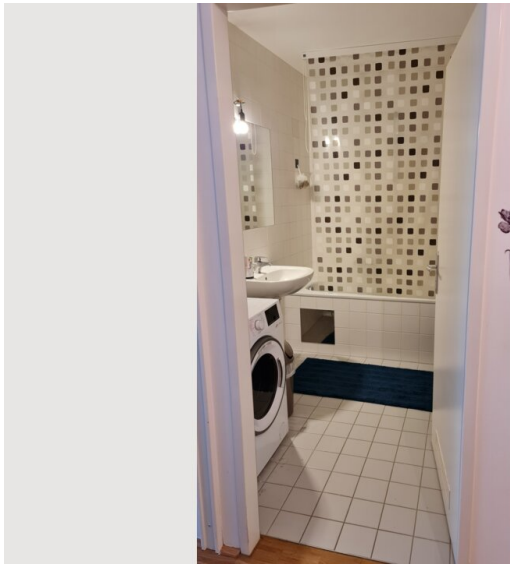
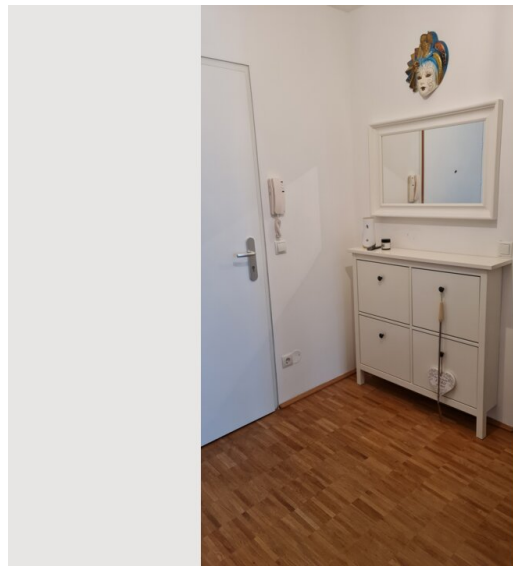
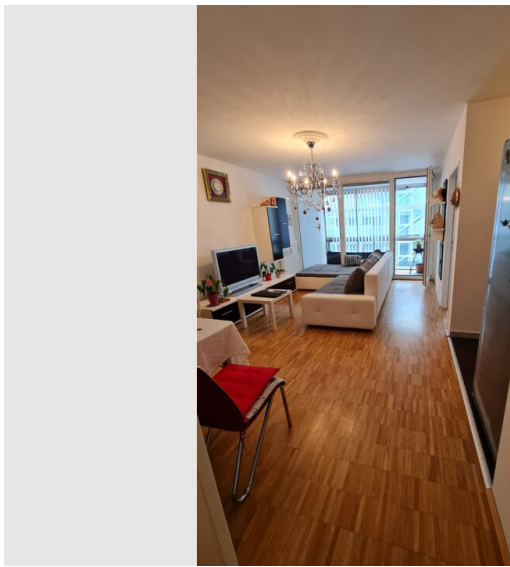
- Private kitchen
- Glasses/Tableware
- Dishwasher
- Cooking utensils
- Coffee machine
- Microwave

## Informations

- Suitable for children
- Short-term parking zone subject to a charge
- Regular cleaning at extra cost
- Smoking allowed
- Pets forbidden
- Bicycle room free of charge

## Picture gallery





## Infrastructure



All kinds of shops are within walking distance (for example, Hofer, Spar, dm, Lidl, Billa, pharmacy, ...), also the Reumannplatz (U1) is reached with the favorite street in just a few bus stations. It is also located the Campus Monte Laa on site. For recreational activities, which recreation area Laaer located in the immediate vicinity are particularly well suited Forest with the famous Bohemian Prater.

Public transport: Bus 68A, 68B, 227; Metro U1, tram D



## Location

