



2 ROOM APARTMENT, 1120 VIENNA

10 Min. Downtown - 49sqm - Parking - Metro 100m

Object number: GG7

[View and rent online](#)

Period	20/12/2025 - 20/01/2026
Number of persons	2
Total incl. VAT.	€ 1.784,78
Security deposit	€ 1.300,00

• 2 rooms, 49m², separately walkable • TOP location: 10 minutes to St. Stephen's Cathedral etc. • Parking on request • Ideal public transport connections: U4 / U6 metro in 100 meter • Bedroom with double bed + sofa bed • Livingroom with kitchenette



Living space

49m²



Maximum occupancy

5 Persons



Complete accommodation ?

1 Private bathroom 1 Separated bedroom 1 Living-Sleepingroom



3. floor

Elevator available



Check-in

16:00 - 23:00 Clock



Check-out

04:00 - 11:00 Clock

Sleeping options

Sleeping room



1x Double bed (1,60 m x 2 m)



1x Sofa bed (1 person)

Living and sleeping



1x Sofa bed (2 persons)

Descripton of accommodation

This central 2-room apartment (separately accessible) in the third floor (with lift) offers on 49m² everything to feel at home away from home.

It has a bedroom with double bed (160cm wide) and additional sofa bed (for one person, 200x75cm) and a living room with an integrated kitchenette and a sofa bed with duckboard (200x140cm). Furthermore there is a bathroom with a shower and toilet.

Due to its location in a low-traffic one-way street, it is very quiet in the apartment despite the centrality.

Of course, the apartment is fully equipped and leaves nothing to be desired: Wi-Fi, Netflix, dishwasher, washing machine, clothes dryer, coffee maker, microwave, etc. everything is included!

Equipment & Features



Basic equipment

- Internet/Wifi
- TV
- Private dryer
- Towels
- Vacuum cleaner
- Cleaning utensils
- Music system/docking station
- Private washing machine
- Bedclothes
- Private toilet
- Iron & ironing board
- Hairdryer



First supply

- Toilet paper
- Soap



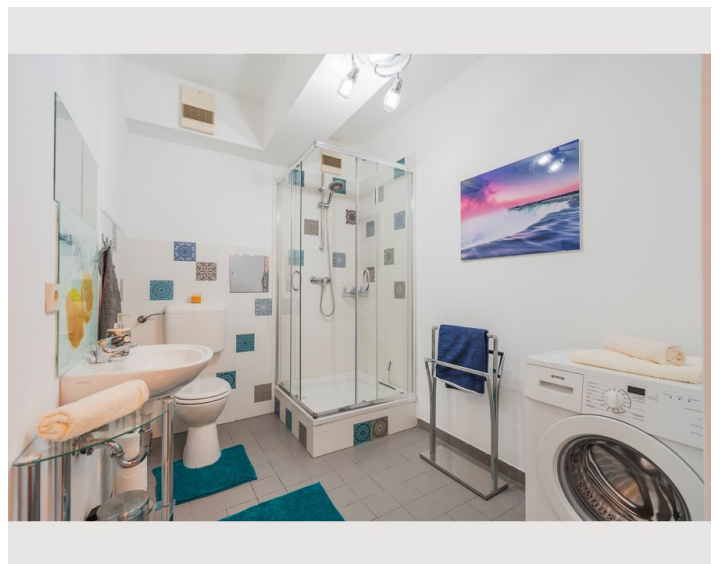
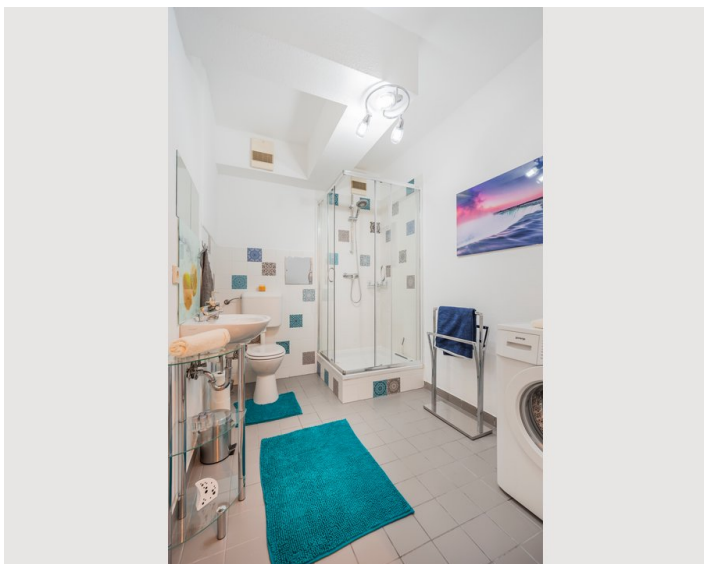
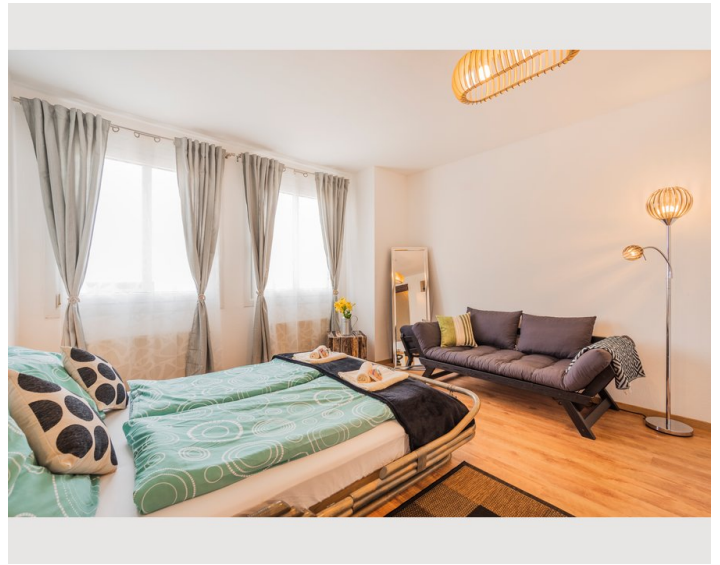
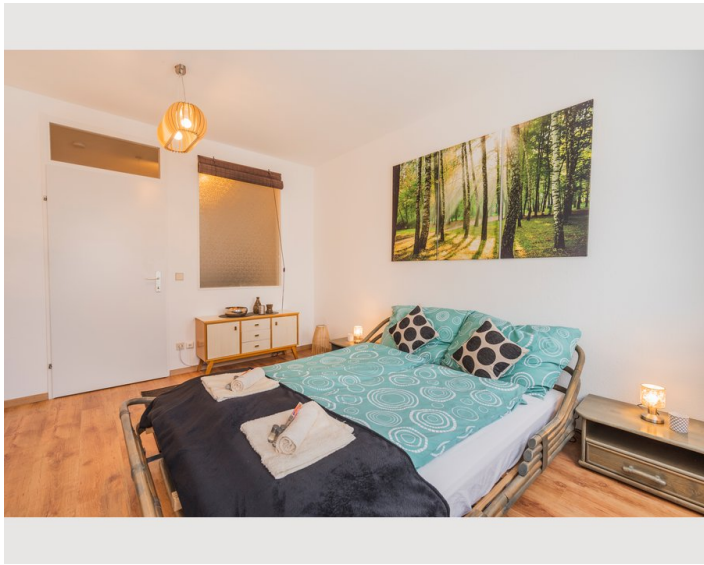
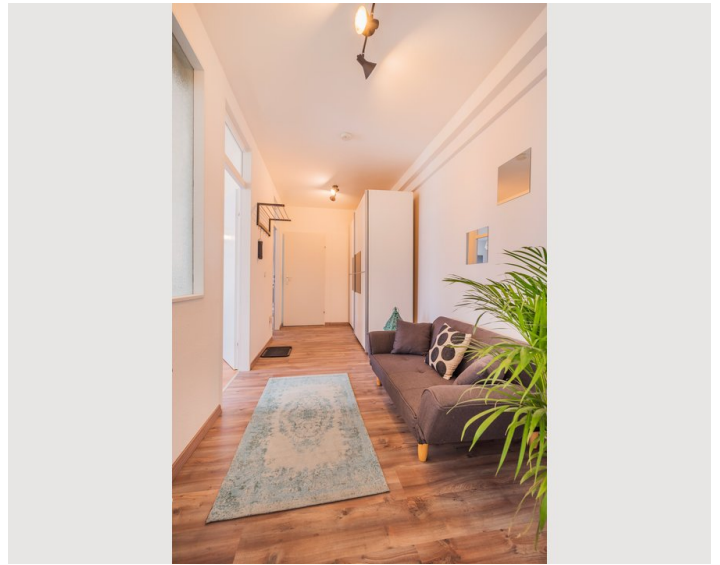
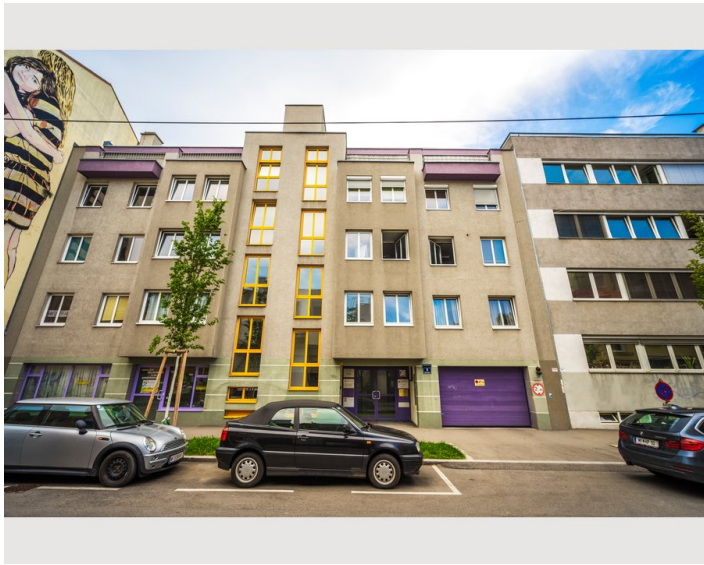
Kitchen

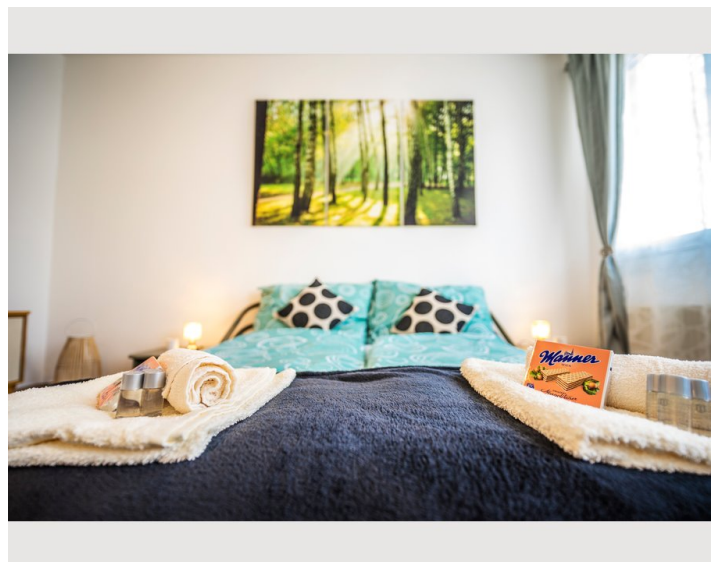
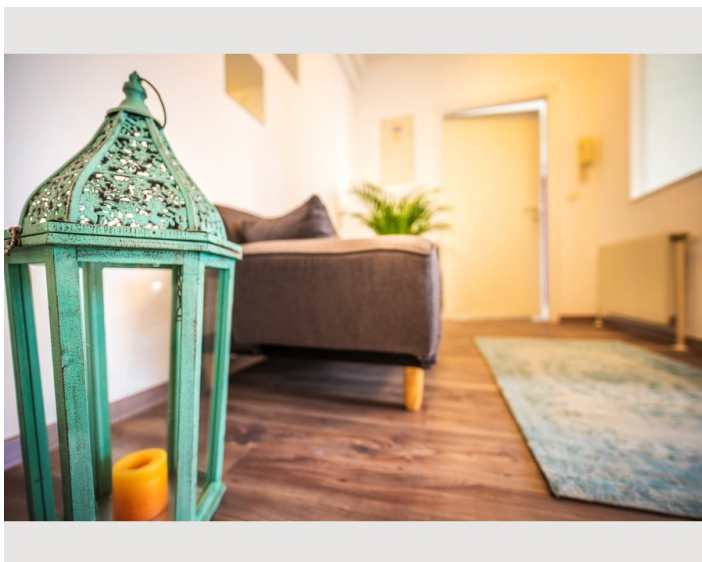
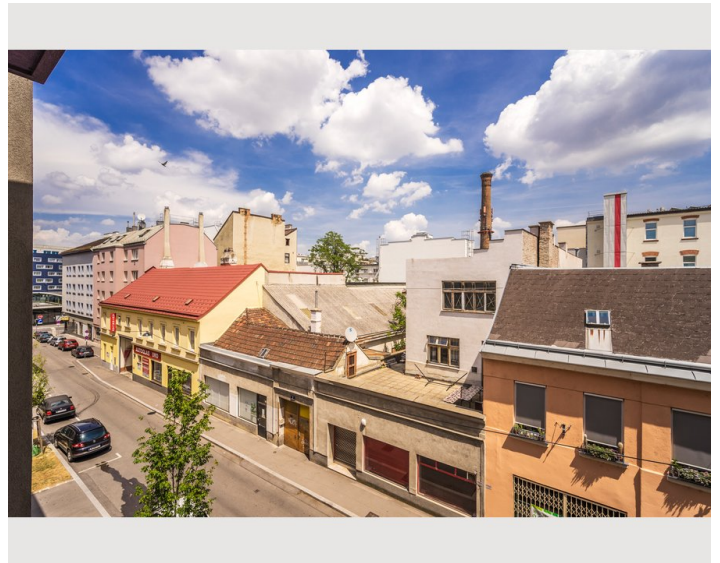
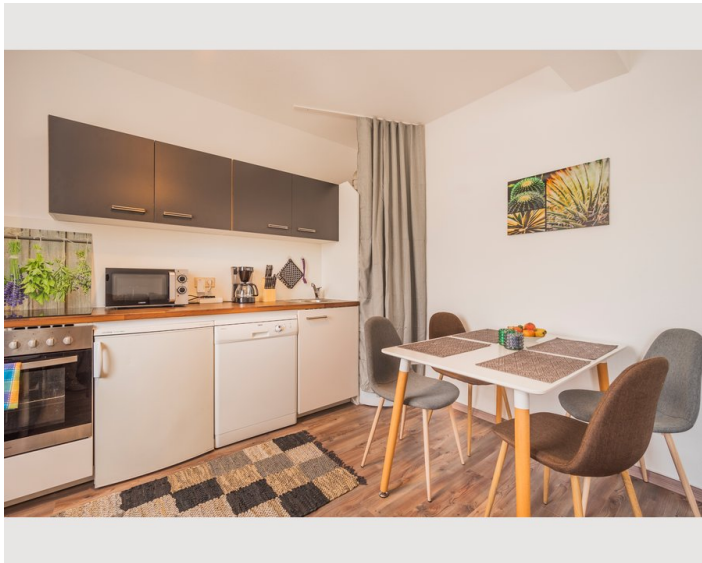
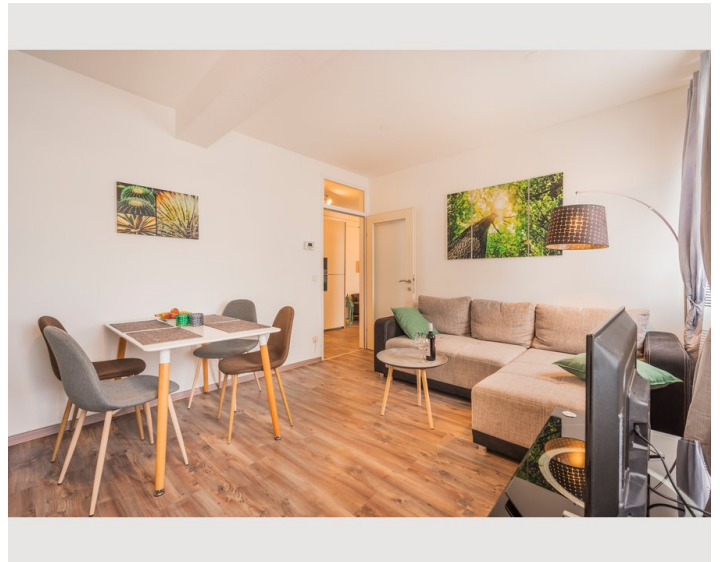
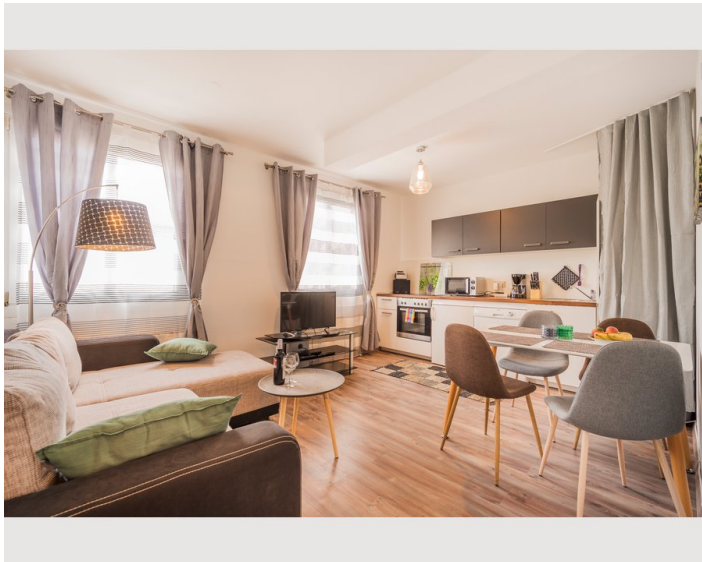
- Private kitchen
- Cooking utensils
- Filter coffee
- Microwave
- Kitchenette
- Glasses/Tableware
- Dishwasher

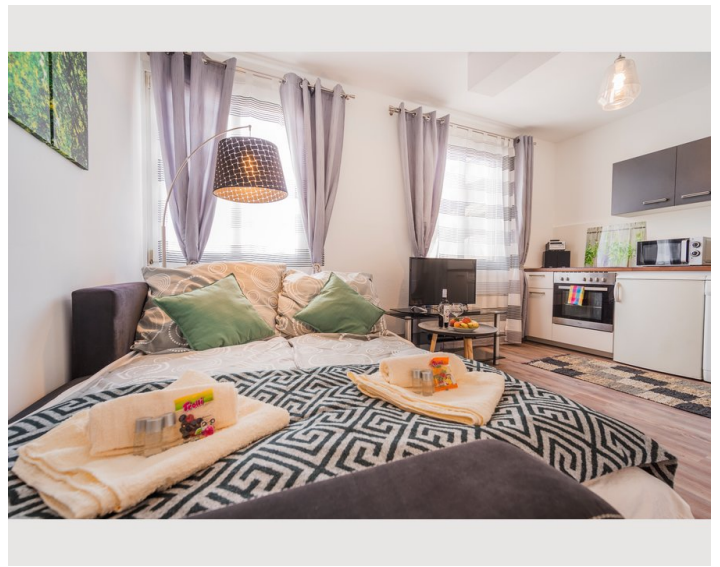
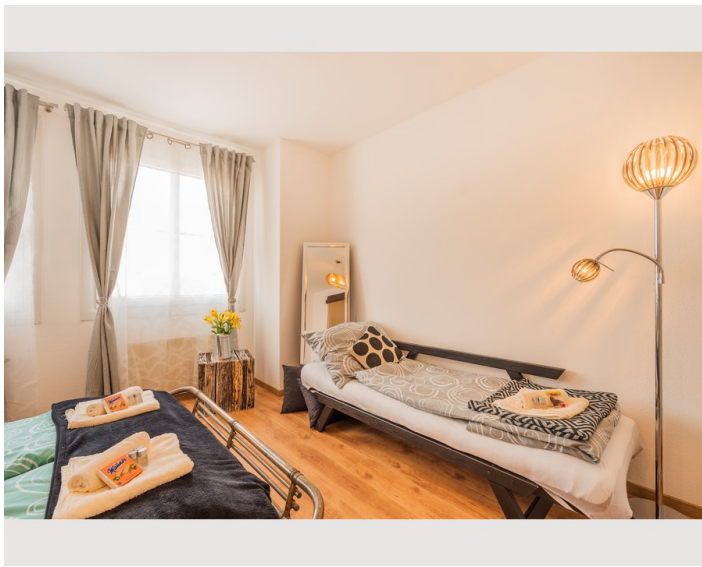
Informations

- Suitable for construction workers
- Smoking not allowed
- Desk/Workplace
- Regular cleaning at extra cost
- Suitable for children
- Short-term parking zone subject to a charge
- Pets on request

Picture gallery







Location

