



STUDIO APARTMENT, 1100 VIENNA

Living in the heart of the 10th viennese district

Object number: Herz20

[View and rent online](#)

47m² Loft + 10m² gallery light and silent good transport connection
shared entrance door, but own living space

Period	24/07/ - 24/08/2025
Number of persons	2
Total incl. VAT.	€ 931,36
Security deposit	€ 700,00



Living space

47m²



Maximum occupancy

4 Persons



Complete accommodation [?]

1 private bathroom 2 Shared bedrooms



4. floor



Check-in

07:00 - 22:00 Clock



Check-out

00:00 - 16:00 Clock

Sleeping options

Living and sleeping 1



1x Double bed (1,60 m x 2 m)

Living and sleeping 2



1x Double bed (1,80 m x 2 m)

Descripton of accommodation

We are two adults with a one-year old. We enter trough the same door, but our living space is on the left while yours is on the right side of the flat. If you are not standing by your door, you don't even notice us coming and going. Of course both apartments have their own lockable door. On the pictures you see "your" apartment. It is calm and bright. There's aircondition for the hotter days and you can use our internet.

Equipment & Features



Basic equipment

- Community washing machine
 - Towels
 - Aircondition
 - Cleaning utensils
 - Bedclothes
 - Private toilet
 - Vacuum cleaner
 - Hairdryer
-



First supply

- Toilet paper
 - Soap
 - Fridge filling on request
-



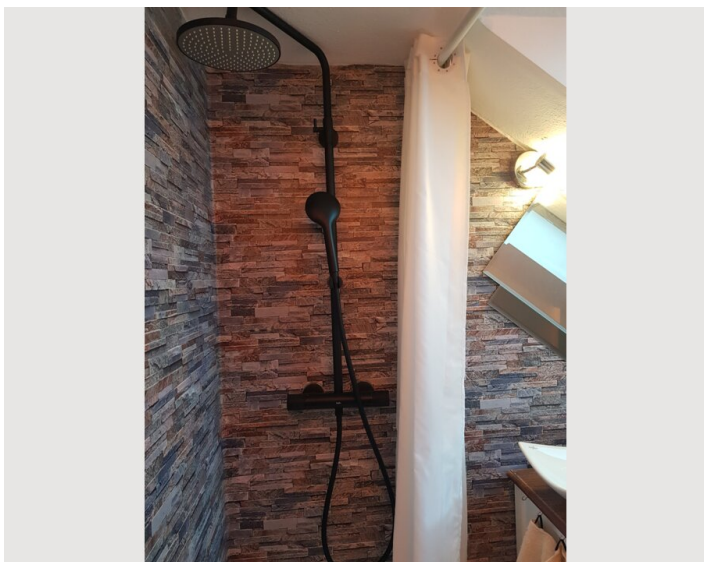
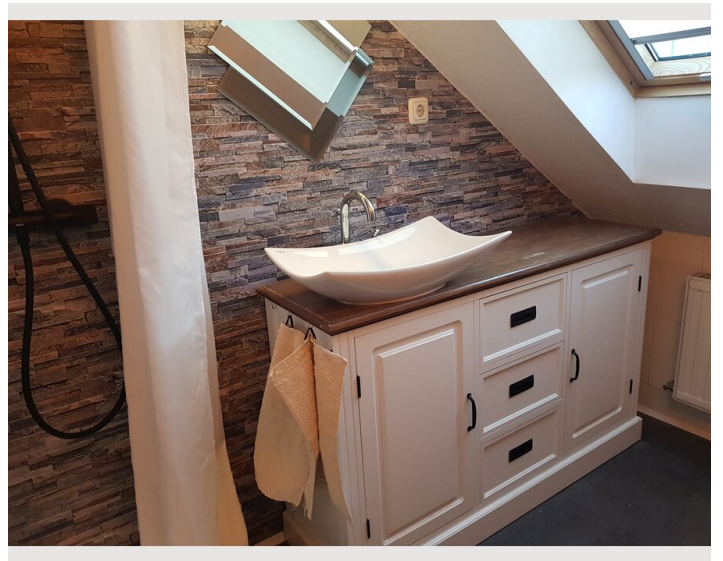
Kitchen

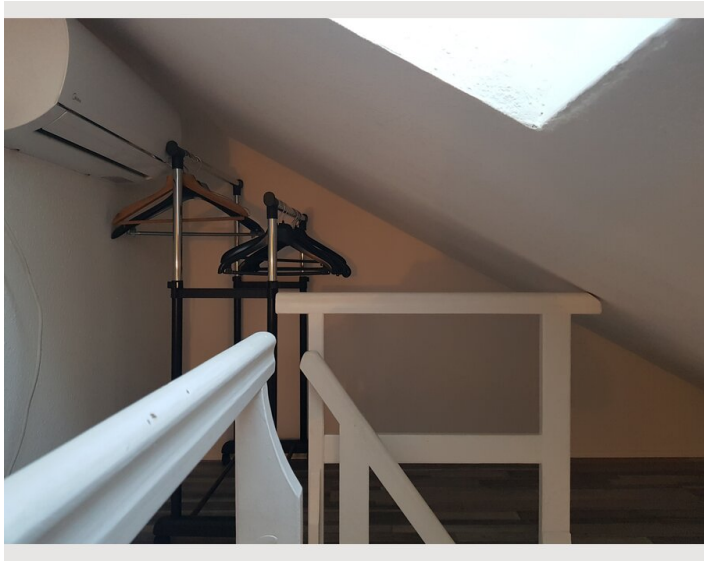
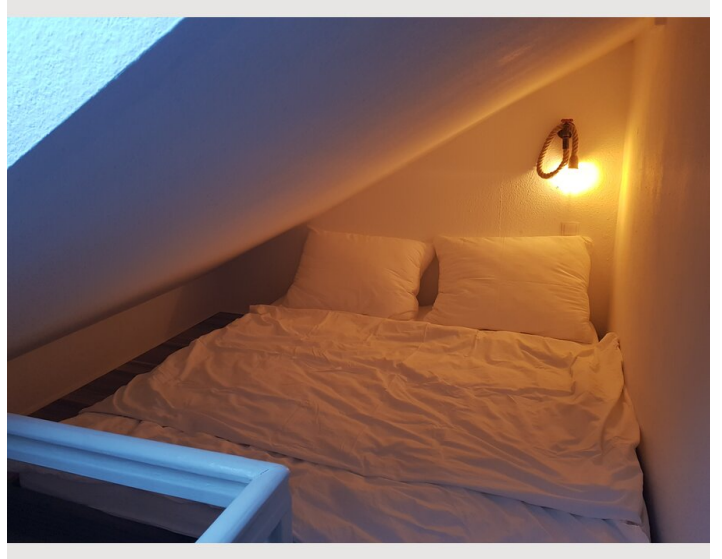
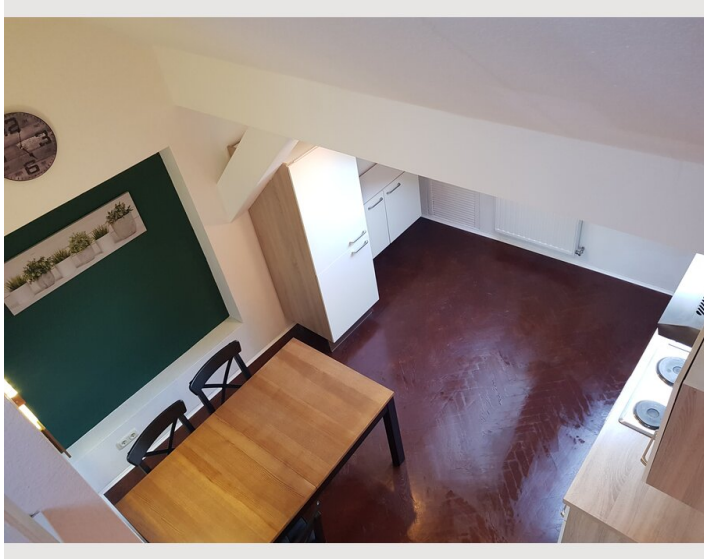
- Private kitchen
- Cooking utensils
- Glasses/Tableware
- Filter coffee

Informations


- Suitable for children
- Short-term parking zone subject to a charge
- Pets on request
- Bicycle room free of charge
- Smoking not allowed
- Desk/Workplace
- Regular cleaning at extra cost


Picture gallery







Infrastructure

 17km

 90m

 5km

 90m

Within walking distance you'll find good and cheap restaurants, bars, cafés and of course supermarkets and drugstores. The recreation area Wienerberg you'll reach in 15min walking, smaller parks are basically in front of the house.

by public transport you reach:

- the city center in 22min
- the airport in 45min
- the Prater in 25min
- the Danube in 35min

with a car or by taxi or bike you'll need about 10 min less. There's a bike shed in the courtyard of the house, where you can lock your bike.

Location

