



2 ZIMMER WOHNUNG, 1070 VIENNA

2 rooms apartment near Mariahilferstrasse

Object number: DERC1

[View and rent online](#)

Period	19/07/ - 19/08/2025
Number of persons	2
Total incl. VAT.	€ 2.038,28
Security deposit	€ 1.500,00

Small is beautiful. You are surrounded by cafes, restaurants, shops. Perfect infrastructure with trams, bus, subway in walking distance. Young creatives, bicycle friendly people everywhere.



Living space

45m²



Maximum occupancy

3 Persons



Complete accommodation [?]

1 private bathroom 1 Separated bedroom



3. floor

Elevator available



Check-in

10:00 - 20:00 Clock



Check-out

10:00 - 20:00 Clock

Sleeping options

Sleeping room



1x Double bed (1,40 m x 2 m)



1x Sofa bed (1 person)

Descripton of accommodation

The bedroom has the window to the court and is very quiet and peaceful. The living room lets the sun in early in the morning but is not heating up during the day. You will enjoy a view to trees and a church.

Entering the apartment there is a small corridor and the bedroom in front of the front door. Turning left there is the kitchenette. Cooking is possible on an induction plate. The bathroom has a standard sized bathtub and a washing machine.

The living room is furnished with a couch, 3 comfortable chairs, a working desk with rotating office chair. There is also a bar corner with different drinks and small fridge. Fell free to help yourself and contribute to the existence of the bar. There is also a Tv connected to the internet.

Equipment & Features



Basic equipment

- Internet/Wifi
 - Printer
 - Bedclothes
 - Private toilet
 - Cleaning utensils
 - TV
 - Private washing machine
 - Towels
 - Vacuum cleaner
-



First supply

- Toilet paper
 - Soap
 - shampoo
-



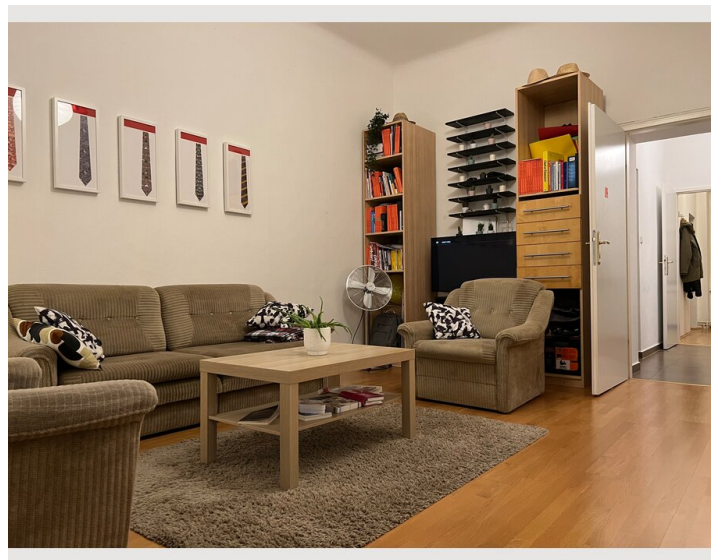
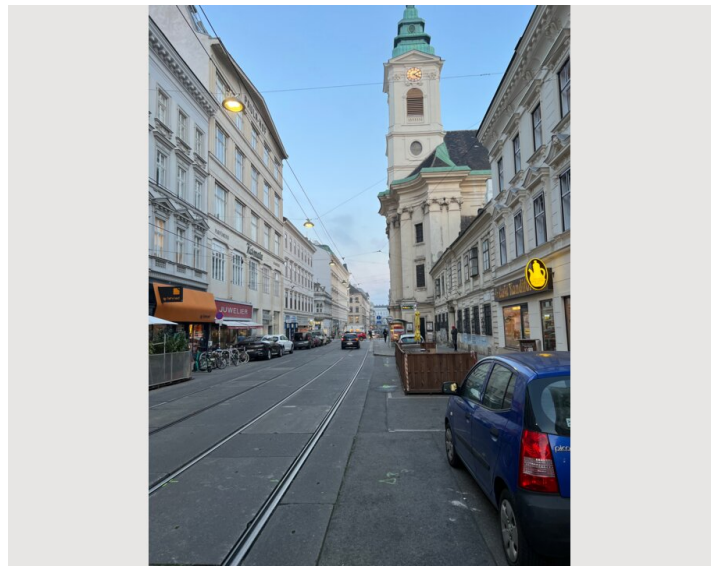
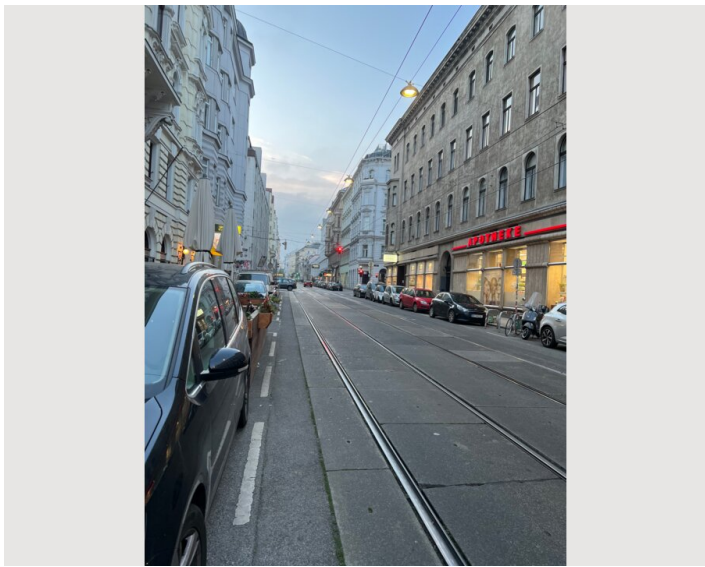
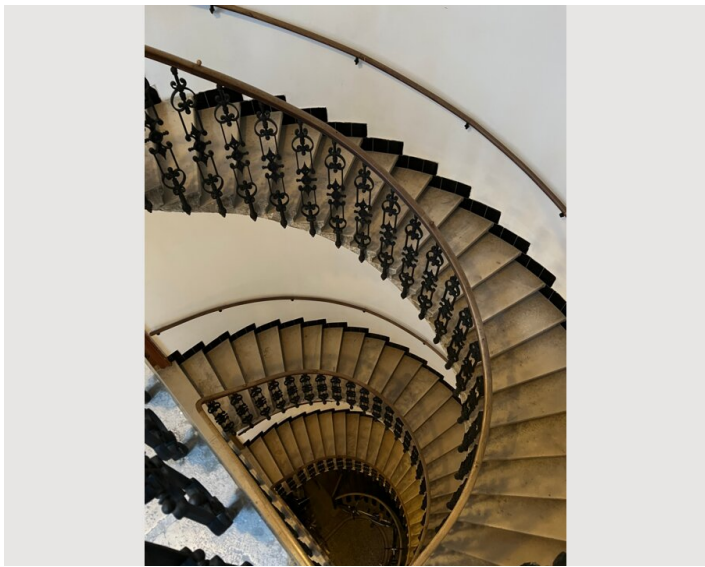
Kitchen

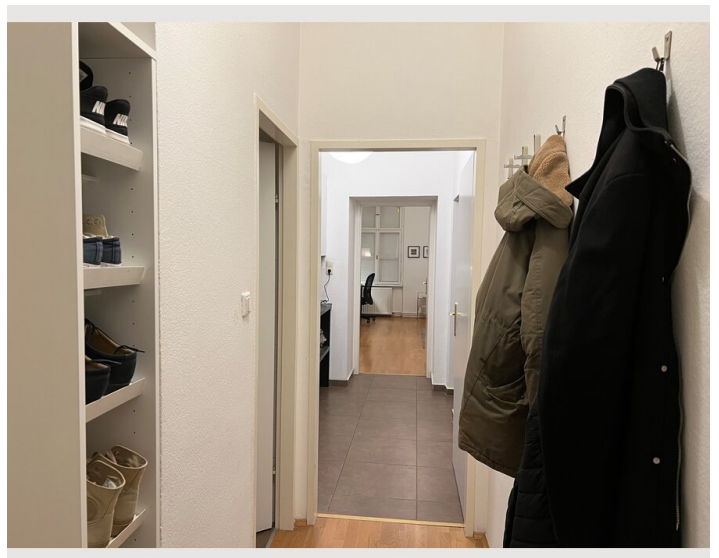
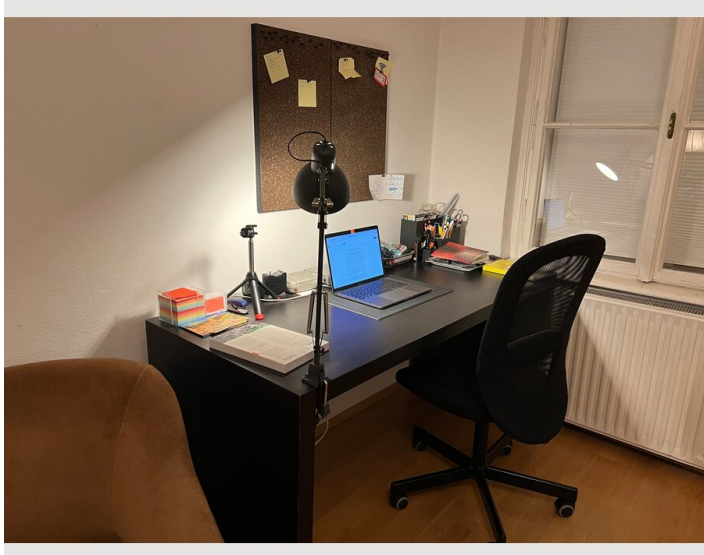
- Kitchenette
- Glasses/Tableware
- Cooking utensils

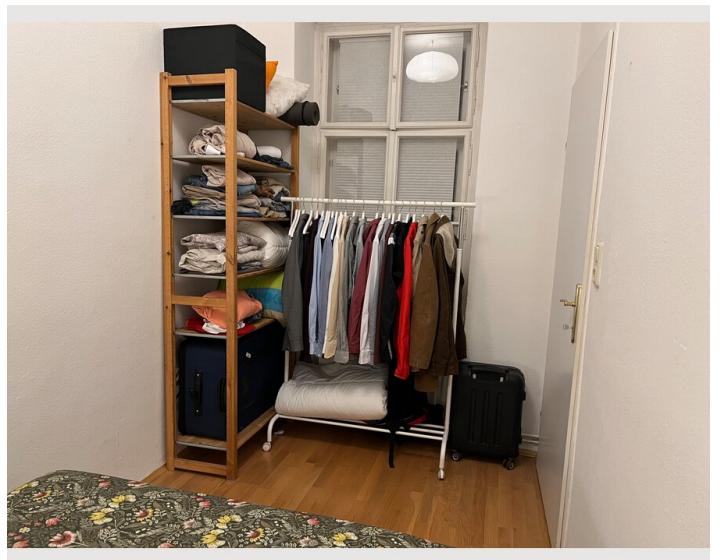
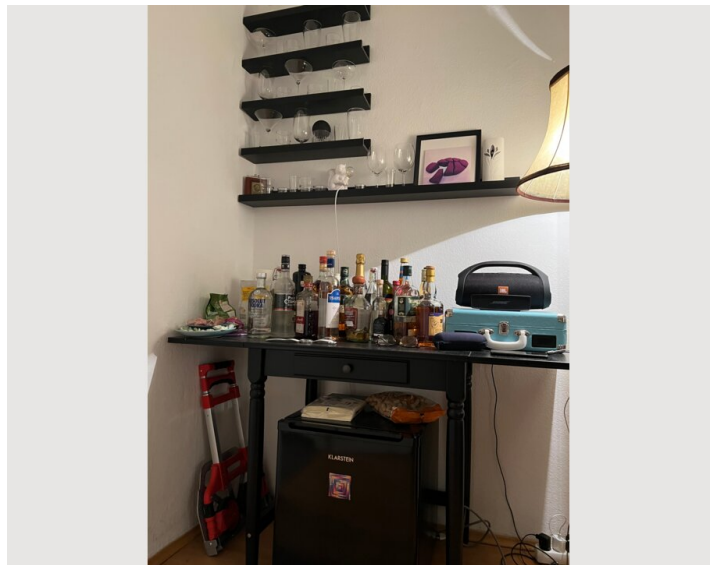
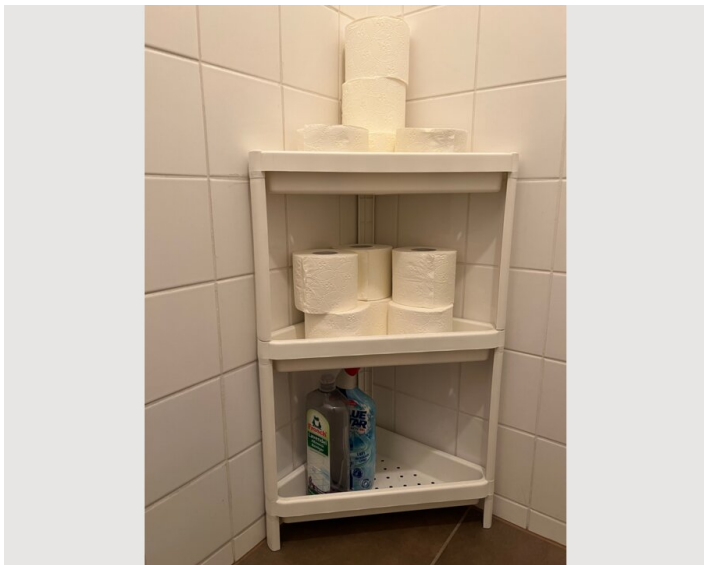
Informations

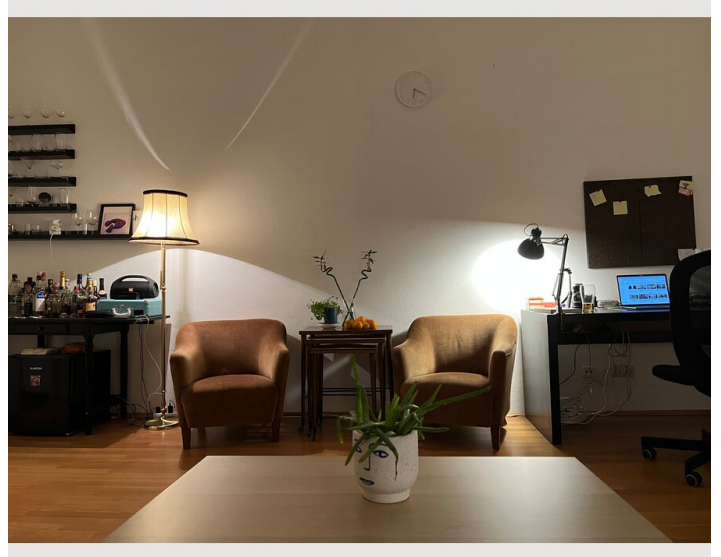
- Suitable for construction workers
- Desk/Workplace
- Suitable for children
- Pets on request

Picture gallery









Infrastructure

- © The apartment is located in the city centre, so you can find almost anything nearby within 10 min. radius.

In front of the door you have a tram station. Bus, other tram and subway are 5 walking minutes away. There is a pharmacy next to our building. Bike shops, photography shops, cafes and restaurants are on the street. The famous and beloved Berliner Döner is across the street. The next 3 supermarkets are 5 walking minutes away. Neubaugasse is famous for shopping, bars etc and only 7 walking min away. The biggest public indoor swimming place Stadthalle is 10 minutes away. Westbahnhof is 1 subway station away. There is a catholic church across the street for those religious people. etc

Location

