



STUDIO APARTMENT, 6135 STANS

Club mansard Stans

Object number: EFFQ1

[View and rent online](#)

Period	08/12/2025 - 08/01/2026
Number of persons	2
Total incl. VAT.	€ 2.737,78
Security deposit	€ 2.000,00

Sweet attic apartment with 60 m2 i 2nd floor. Central location in the middle of the Tyrolean Unterland. From us you can go straight into nature. We are close to the action and still in the middle of nature. We are surrounded by trees and bushes all



Living space

57m²



Maximum occupancy

4 Persons



Complete accommodation [?]

1 Private bathroom 2 Separated bedrooms 3 Shared bedrooms



2. floor



Check-in

15:00 - 20:00 Clock



Check-out

06:00 - 09:00 Clock

Sleeping options

Bedroom 1



2x Single bed

Bedroom 2



2x Single bed

Living and sleeping 1

Living and sleeping 2

Living and sleeping 3

Descripton of accommodation

Private house- 2 floor club apartment - newly renovated. Also suitable from workplace. Division. Stairs from the hallway into the bedroom (double bed) -bathroom with toilet- access through the hallway to the kitchen (extra washing machine niche) - from the kitchen you go through a round arch into the living room (sofa bed). This apartment is suitable as a fully equipped holiday home or as a work space. From us you can go straight into nature. We have our own access to the forest. Hikes or bike tours to the nearby mountains or to the Wolfklamm or Sankt Georgenberg- Tratzberg Castle are possible directly. There are many sights nearby, including the Zillertal and Achental valleys.

Equipment & Features



Basic equipment

- Balcony
- Music system/docking station
- Private washing machine
- Towels
- Parking space
- Vacuum cleaner
- Cleaning utensils
- Internet/Wifi
- TV
- Bedclothes
- Private toilet
- Aircondition
- Iron & ironing board
- Hairdryer



First supply

- Toilet paper
- Soap
- shampoo
- Fridge filling on request



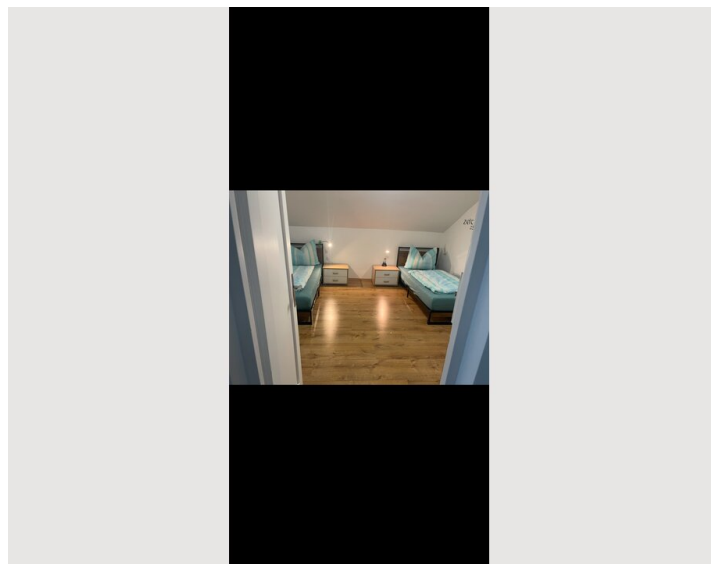
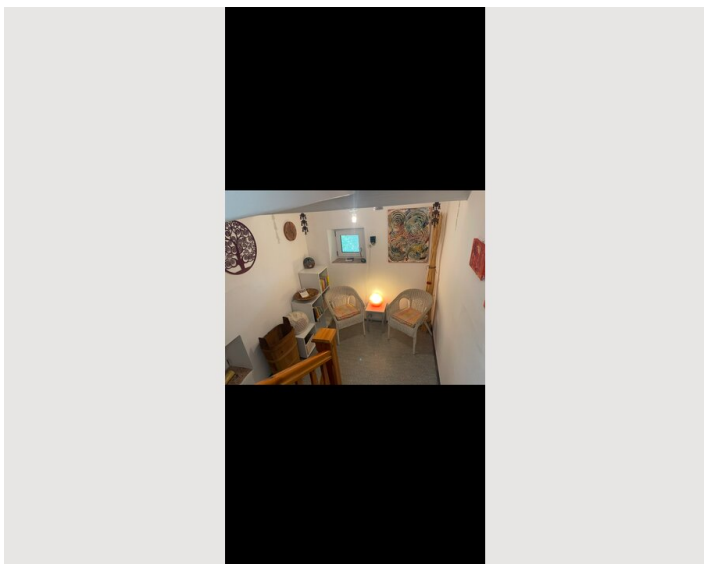
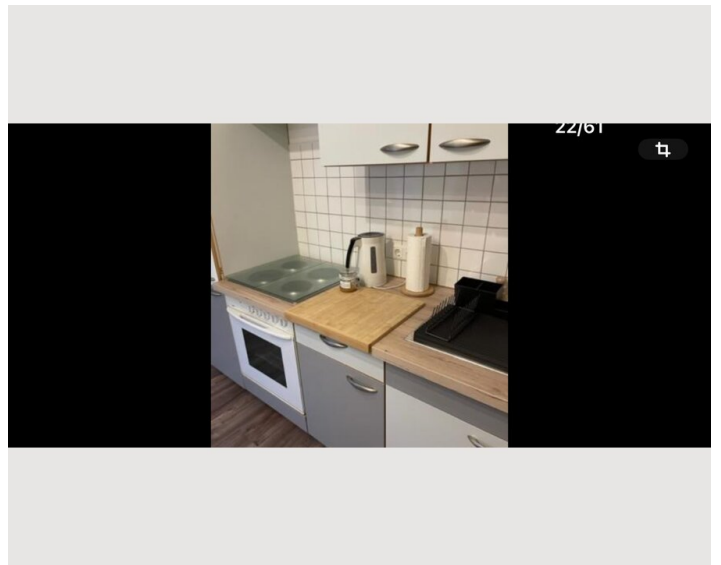
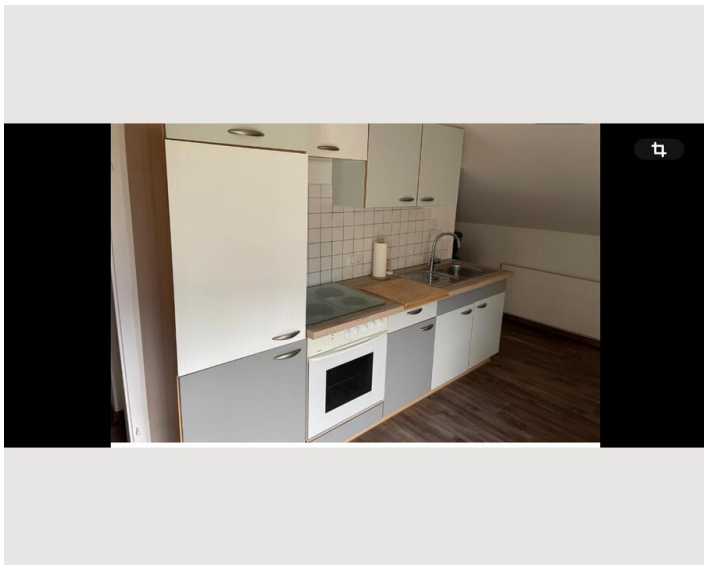
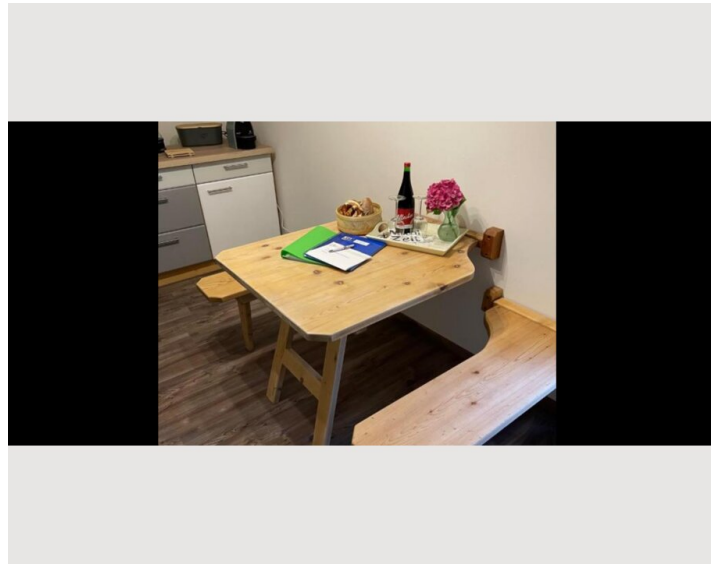
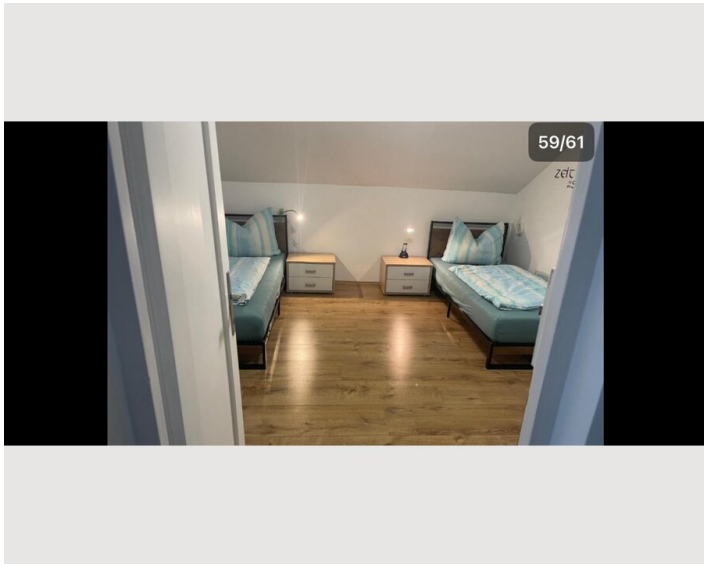
Kitchen

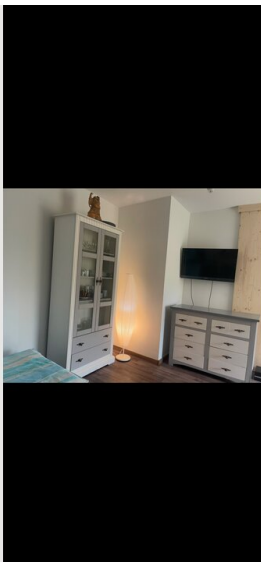
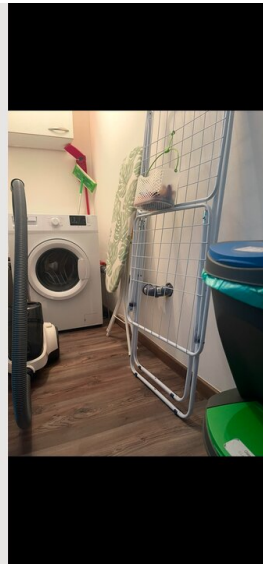
- Private kitchen
- Glasses/Tableware
- Cooking utensils
- Espresso machine

Informations

- Suitable for construction workers
- Private entrance
- Regular cleaning at extra cost
- Smoking not allowed
- Pets on request


Picture gallery






Infrastructure

 100 Meters

 700 Meters

 1,3 Kilometers

 29 Kilometers

 700 Meters

In the village are inns a wellness hotel - sights and hiking trails. Vomp and Schwaz are very close by. The nearest pharmacy is about 2 kilometers away. The Schwaz hospital is also very close.

Location

